

Mini News

News For The Employees of Data General

May 8, 1987

MacKenzie Named VP; New Division For VARs



Ward MacKenzie

Ward MacKenzie has joined Data General as vice president of the Value Added Reseller (VAR) Marketing and Development division. In this new position, Ward will head a new business division responsible for increasing the focus of Data General's marketing and development activities for its traditional technical and commercial VAR customer base. Ward reports to Ed de Castro, president and acting head of the Information Systems Group.

"The hiring of Ward and the formation of the new VAR Marketing and Development Division emphasize our determination to be successful in developing products for the VAR markets. These moves underscore our recognition of the critical role of VARs in providing an effective means of delivering solutions based on Data General products to our customers," says Ed.

"Ward is uniquely qualified for this new position. He has had more than 18 years of marketing, sales and manufacturing experience at Digital Equipment. More recently, at Lisp Machines, he has had extensive experience in the development of artificial intelligence solutions for real-time process control in industrial and commercial applications. We believe Ward will greatly strengthen our Business Group managerial team and significantly increase our presence in the technical and industrial markets."

Reporting to Ward are: Jim Barnes, vice president of the Volume Products Division; John McGlone, acting director of the Distribution Division; Mike Taback, division director of the Technical Systems Development group; Art Holmes, division director of the Processor Development group; and Jan Pieter Scheerder, director of the Systems and Product Management group.

Ward has served as chief executive officer and chairman of the board of Lisp Machines since 1985. He has been responsible for overall management and strategic direction of the company.

Prior to joining Lisp Machines, Ward was with Digital Equipment from 1967 to 1985, most recently as vice president of the Volume Group. In that position, he was responsible for managing all channels of distribution for the company's commercial and technical OEM and VAR business and microprocessor business. From 1972 to 1978, Ward held a number of positions in Digital Equipment's international operations including responsibility for managing sales and marketing of Digital Equipment's large computer business in Europe, managing the company's marketing for all products in Europe, and managing Digital Equipment's European manufacturing operations.

Prior to Digital Equipment, Ward was with General Electric where he managed the marketing of automated machine tool control products.

Ward received a BS degree in physics in 1961 from Worcester Polytechnic Institute (WPI) and an MBA from Dartmouth College's Amos Tuck School of Business Administration in 1967. He received the Robert Goddard Award from WPI in 1986 in recognition of his outstanding professional achievements.

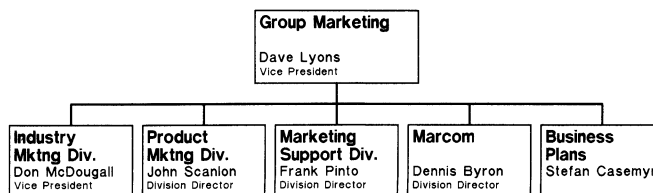
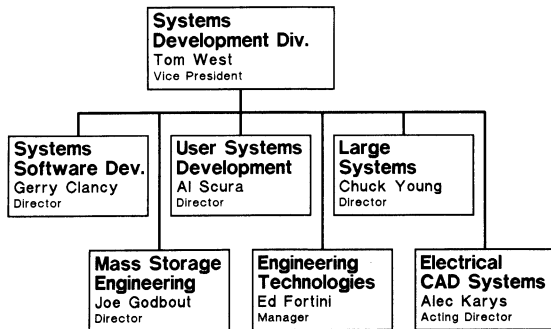
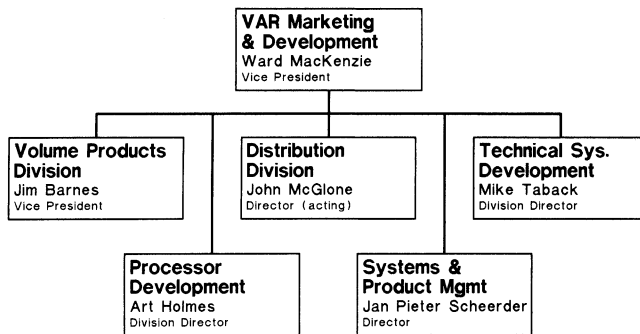
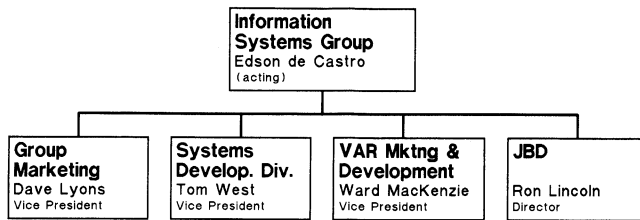
The new division will work closely with the Systems Development Division (SDD), which reports to Vice President Tom West, and Group Marketing, which reports to Vice President Dave Lyons.

SDD will develop all of Data General's higher-end systems product lines.

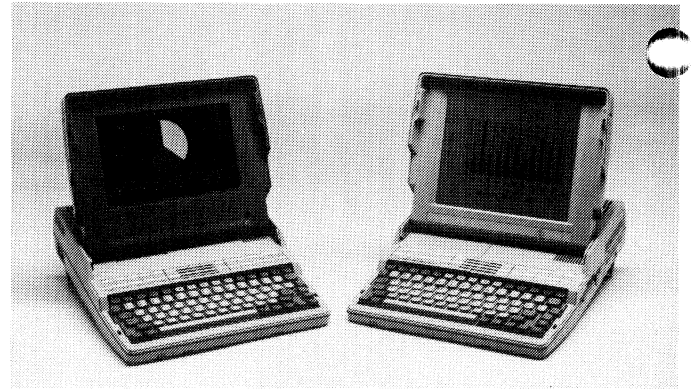
The Group Marketing division will focus on marketing products to Fortune 1000 end-users and the targeted industry marketplace. Meanwhile, the VAR Marketing and Development division will market and develop low-end products for the technical and reseller marketplaces that use software such as UNIX, MS-DOS,

etc. Group Marketing will provide product marketing, industry marketing, marketing support and marketing communications support to both divisions.

The following organizational charts will help you to better understand the structure of the groups involved in the formation of the VAR Marketing and Development division:



Data General Introduces Enhanced DG/1 Computer



Data General has introduced the DATA GENERAL/One Model 2T computer, a full-function, laptop computer which weighs less than 12 pounds. The laptop is manufactured at Nippon-Data General. The DATA GENERAL/One Model 2T uses an Intel 80C88 chip and is therefore not effected by the recently implemented U.S. Department of Commerce tariffs against Japanese-made goods.

It is available with an exclusive combination of features including a backlit, supertwist LCD screen for easier viewing; a dual-speed CPU, which runs 80 percent faster than the previous models; a 10-MB Winchester hard disk and internal removable batteries.

The computer features an entry level price of \$1,695 for a backlit, supertwist LCD screen, 512KB R. memory, and one 3-1/2-inch diskette drive. A system with a light emitting, electroluminescent (EL) screen, similarly configured, is available for \$2,695. All systems include a one year warranty.

The DATA GENERAL/One Model 2T can be configured with up to 2.5 MB of memory, which is 66 percent more memory than the leading LCD competitor. The EL model can run on an external battery pack for up to 2 hours.

The DATA GENERAL/One Model 2T computer is IBM PC/XT compatible and runs PC compatible software programs such as Lotus 1-2-3 and Word Perfect in the 3-1/2-inch diskette format.

Additional storage in the form of an internal 10-MB Winchester fixed disk or a second 3-1/2-inch disk drive is available.

"No other computer company today is better positioned to lead the industry in meeting the requirements for laptop applications than Data General," says Skip Duggan, a director within the Volume Products Division. "Due to our continued implementation of advanced technologies, we are now addressing more sophisticated applications than were previously possible even on larger, more expensive desktop systems."

The backlit supertwist LCD screen provides increased character contrast and can be switched off when light conditions are favorable for a more conventional reflective LCD display. The EL screen is a light-emitting display with CRT-quality resolution. It enables two to

three people to simultaneously view the screen in any type of lighting. Both screens are full size, displaying 25 lines by 80 characters.

"The DATA GENERAL/One Model 2T reconfirms our commitment first announced back in September, 1984, to provide the user with state-of-the-art laptop computing power in a system which reflects our overall price/performance leadership," says Skip. "The product represents a combination of technologies, including dual-speed CPU, expanded memory, 10-MB hard disk with the added capability of running on internal battery power, which is unequalled in the market today. We maintain industry leadership by listening to our customers and responding with a choice of laptop systems which meet their needs for screen options, expandable memory and highly competitive pricing."

The LCD system has a set of removable NiCad batteries which can be easily replaced with a new set when recharging is necessary. Battery life is up to five hours, depending on system configuration and application. In addition to the integral trickle charger, which slowly recharges the system battery overnight, an optional external quick charger unit recharges batteries in two hours.

Options

Options for the DATA GENERAL/One Model 2T include a letter-quality ink-jet printer which weighs less than four pounds, runs on batteries, and prints 150 characters per second.

Other options include a 5-1/4-inch external disk drive, an 8087 floating point unit for complex mathematical calculations and a soft carrying case which can hold the system and peripherals. When the system needs recharging while mobile, a car adapter is available which recharges the battery through an automobile cigarette lighter.

"The DATA GENERAL/One Model 2T computer provides a full range of features which were previously available only in a desktop system, such as expanded memory, dual speed processing, an internal hard drive, and a variety of user-installable options," states Skip. "Data General continues to stay on the forefront of important technologies, providing the customer with laptop systems which can be configured to individual application needs. We continue to implement new LCD technology--the ability to use a supertwist LCD screen in normal ambient light conditions or to switch to backlighting in low-light environments."

Support

The DATA GENERAL/One Model 2T computer is supported by a one-year worldwide warranty which provides for a system to be repaired or replaced, through the mail, to the nearest service location. Data General will repair or replace the system and mail it back to the customer within five working days of its receipt. This industry-leading warranty program is further enhanced by a variety of cost-efficient support

plans ranging from a same-day exchange program to Data General Field Engineering telephone support.

Markets

Insurance industry applications have emerged as one of the most intensive areas for laptop uses and one of the key industries Data General has targeted. Agents are using laptop computers for financial needs analysis, premium auditing and sales illustration. Pharmaceutical sales is another area where a fully functional laptop like the DATA GENERAL/One Model 2T computer gives a competitive advantage to representatives in medical sales. These people call on pharmacies, hospitals and doctors' offices and have to do remote order-entry, weekly sales call reports and conduct inventories from remote locations.

According to Dataquest and IDC, two research firms which follow the laptop computer market, both estimate that 1987 sales of high-end functional laptop computers will be between 300,000 and 400,000 units. Other surveys indicate the leading industry groups planning further laptop purchases for 1987 are insurance and financial companies, transportation and utility companies, government agencies, and wholesale or retail distribution firms.

Innovative Technologies Make DG/1 The Solution

In designing the new DATA GENERAL/One Model 2T computer, Data General has made full use of new developments in both component and screen technologies to create a system which is both fully functional and truly portable.

The use of surface-mounted devices (SMD) has been expanded beyond that of original models. As far back as 1984, Data General incorporated this technology in the design of the DATA GENERAL/One Model 1 computer. In addition to the main printed circuit board, the modem, floppy drive, hard disk controller and add-on memory board have all been designed using surface-mount technology.

In the DATA GENERAL/One Model 2T, surface mount technology has been extended to the design of the memory expansion cards. As a dramatic example, using surface mount technology a printed circuit board the size of a business card and can easily hold 2 megabytes of memory chips -- quite impossible with conventional technology.

Surface-mounting provides a 4:1 space advantage over the more conventional "through-hole" assembly process, because surface-mount components can be mounted on both sides of a PCB, are much smaller, and can be placed closer together. Conventional "through-

hole" assembly processes are not efficient for laptops because components are larger and can only be mounted on one side of a PCB.

The DATA GENERAL/One Model 2T provides the user with a new, more efficient backlit supertwist LCD screen. In laptop systems using conventional backlit screens, battery power must be supplied to the backlight at all times. Data General designed the display to provide users with the option of using the display both with and without backlighting. In most lighting conditions, the user can turn off the backlighting with one or two keystrokes and eliminate unnecessary battery drain. In less than optimal light conditions, the user can turn on the backlighting for maximum readability.

Backlighting is provided by an electroluminescent (EL) sheet behind the supertwist LCD. Other backlit portables have chosen to optimize their screens for backlighting mode only. In these instances, there is no reflective mirror on the back glass of the LCD, and the LCD cannot be seen when the backlight is turned off. The backglass of the Data General LCD is half-silvered to provide 90 percent light reflection and 10 percent light transmission. Thus, even when the backlight is off, the LCD can be read using light reflected off the transreflective surface.

Data General engineers designed the electronics driving the electroluminescent backlight to extend the life of the EL backlighting panel. Most EL screens will fade to half of their original brightness in approximately 1,000 hours. By designing a power system that carefully regulates the power to the backlight, Data General engineers extended the lifetime by nine times.

After consultation with human factors analysts, Data General provided additional features to make the screen easier on the eye. For example, there is a contrast adjustment for the LCD screen, four levels of adjustment to the intensity of the backlighting, and a tilt adjustment. These factors make the DATA GENERAL/One Model 2T computer's display screen the best combination of both LCD and EL technology in one unit.

Data General Forms ISV Alliances

Data General has signed Independent Software Vendor agreements with WordPerfect Corporation, the creator of WordPerfect word processing software, and Access Technology, the developer of 20/20, an integrated spreadsheet program for multi-user computers.

WordPerfect and 20/20 were previously available to Data General customers as third-party applications sold by their respective vendors. Due to an increase in customer demand, Data General has now instituted the new agreements in order to make the products available to the customer directly. The new relationships will strengthen the company's Sales force with additional popular business automation solutions. The products will complement Data General's CEO comprehensive

electronic office software, used by over 165,000 customers worldwide.

"These agreements will enhance Data General software offerings, at a time when freedom of choice is increasingly critical to computer users," comments Christopher Stone, Data General's manager of office systems software. "Today's mixed office environments demand software products like WordPerfect and 20/20. They're highly compatible to other systems, so customers can share documents easily, yet rich in features and responsive to individual needs."

WordPerfect 4.05 and 20/20 operate under the Data General's AOS/VS operating system for the 32-bit ECLIPSE MV/Family of computers. WordPerfect 4.2 and 20/20 operate on Data General's MS/DOS computer line, such as the DASHER/286 and DATA GENERAL/One computers, and IBM PC fully compatible systems. Users operating under the AOS/VS system will access 20/20 and WordPerfect 4.05 through CEO's user applications menu.

Data General is the first minicomputer vendor to market and sell WordPerfect through a direct sales force. The agreement will allow Data General to offer strong word processing functionality in markets that historically have been dominated by such vendors as Wang. WordPerfect has captured 30 percent share of the U.S. word processing microcomputer market (in IBM-compatible 1986 unit sales), according to InfoCorp., a market research firm in Cupertino, California.

WordPerfect's strong point is its ability to support a range of systems such as MS/DOS, AOS/VS, Apple IIe/c & GS, and Vax VMS. WordPerfect will soon release versions for the Apple Macintosh, Atari, Amiga, UNIX, and IBM 370 Mainframe. Current features include a sophisticated mail merge function, substantial on-line tutorials, and a 115,000-word spell-checker. In addition, WordPerfect 4.2 includes a 10,000-headword thesaurus, and a table of authorities (used by lawyers to list references).

License fees for WordPerfect 4.05 range between \$2000 for the ECLIPSE MV/2000 to \$8000 for the ECLIPSE MV/20000. The MS-DOS version of WordPerfect lists for \$495.

Access Technology's 20/20 will enhance the Data General ECLIPSE MV/Family line in the multi-user spreadsheet modeling market. The 20/20 product holds over 50 percent of the minicomputer spreadsheet market, according to the 1987 Software User Survey, published by Sentry Publishing. The 20/20 Release 2, recently announced for Data General computers, adds over 50 new enhancements to the previous version of 20/20. The new release makes 20/20 easier to use, more compatible with Lotus 1-2-3, and more powerful for sophisticated users.

With versions available for minicomputers, mainframes, and PC workstations, 20/20 acts as a standard modeling tool for an entire corporate organization. A Lotus 1-2-3 translator utility allows a customer to use 20/20 and 1-2-3 models together. The 20/20 product includes such features as the ability to window four

graphs and a spreadsheet simultaneously; the capacity to sort, select, and extract from a database comprised of up to 8192 records; English word commands; and a macro facility which includes conditional branching, prompting and error trapping. Access Technology 20/20 ranges in price from \$8,800 for the ECLIPSE MV/20000 to \$2,800 for the ECLIPSE MV/2000DC. The MS/DOS version of 20/20 lists for \$500.

New Facility Reaching Completion

Data General's newest facility at 3400 Computer Drive is nearing completion.

Already, about 200 employees have moved into new offices at 3400 Computer Drive from 4400 Computer Drive. Over the next few weeks, the remaining Marketing Support organizations currently residing at 4400 Computer Drive will relocate to the new building.

In addition, the corporate conference center, a showcase of Data General products, services and history, is scheduled to be opened by June 1.

The occupancy of the 3400 Computer Drive facility will result in changes within Buildings 14A and 14B.

"With the relocation of the marketing groups, space is opening up within 4400 Computer Drive to house some of the organizations which are growing beyond their present quarters," says Facilities Manager Mac Dunbar. "Once the moves to 3400 Computer Drive are completed, the Facilities group will concentrate on operations at 4400 Computer Drive. For instance, the Data Communications and Networking Division, under Don Tocher, will be moved to the space formerly occupied by the Distribution Division in Building 14B."

With the transfer of all customer demonstrations to the Executive Briefing Center, the Guest Marketing area within Building 14A will be used for internal meetings. "The Public Affairs and Public Relations departments will be moved to a section of the space currently occupied by Guest Marketing," states Mac. "However, many of the Guest Marketing conference rooms will remain intact for use by departments in need of meeting space. The product demonstration areas also will remain in order to conduct benchmark testing.

"Once the moves to 3400 Computer Drive are completed, long-term improvements in Buildings 14A and 14B are being planned."

Human Resources Holds Symposium, Establishes Director's Awards

Data General Human Resources employees gathered in Westboro last week for a day-long symposium to keep them abreast of Human Resources practices. The symposium also provided an opportunity to present Director's awards for the first time to Human Resources employees who have exhibited outstanding work performances.

"The awards are a recognition of that extra measure which helps make the difference for Human Resources and Data General," says Don Bateman, vice president of Human Resources.

Employees receiving awards for their contributions in the first and second quarters of fiscal 1987 are: **Sherry Gebo**, a senior Human Resources assistant within the Management and Organizational Development group in Westboro; **Kevin Lawler**, a senior Human Resources representative within Field Engineering in Milford; **Lil Glockner**, a senior Human Resources assistant within the Information Systems Group in Westboro; **Berta Meyer**, Human Resources representative within the North American Sales Division in Shaumburg, Illinois; and **Chris Savage**, a staffing specialist in the Corporate Employment department in Westboro.

Each winner was presented with a plaque and a check for \$500. The awards will be presented within Human Resources each quarter.

"These awards recipients are chosen by the director of their group," says Don. "The recipient will normally be a support person, individual contributor or first-line supervisor - not a manager or director. In selecting the winner, the director is asked to cite at least one specific example of work beyond the scope of the job, an extra effort that contributed to the success of the group or particular project."



Cornell University Professor George Milkovich was the principal speaker last week at the Human Resources symposium held in Westboro. His talk, "Trends and Challenges in Managing Compensation," dealt with several issues Human Resources employees face in their daily operations. More than 100 employees attended the symposium.

Data General Discusses International Business

Members of the International Business Center (IBC) of New England now know how to market U.S.-built products and services in Latin America, thanks to Data General employees Bill Burck and Jorge Reyes. Bill and Jorge this week addressed an IBC seminar that focused on the issues with which U.S.-based firms must be concerned when doing business in Latin America.

Bill, assistant general counsel/International for the Legal department, talked about the legal issues surrounding communications in Latin America. Bill discussed the legal restrictions on advertising within many countries. Jorge, the controller for Data General's Latin American operations, discussed a case study involving a Venezuelan petroleum firm. Because of their close work with Latin America customers, Bill and Jorge were able to highlight their remarks by offering information on tailoring corporate needs to the specific needs of the customer base in Latin America.

Founded in 1956, the IBC is a membership organization dedicated to trade development. Its educational programs of more than 25 seminars and workshops annually, and special membership services, assist more than 425 member companies and organizations to successfully conduct international operations.

A corporate member of the IBC since 1976, Data General has participated in numerous seminars and workshops. Several Data General employees also are involved in the IBC's six operating committees. Bill, who is a director of the center, is also co-chairman of the Legal Affairs committee and has chaired or been a panelist in nearly 20 seminars over the past six years, ranging from technology transfer in China to picking a distributor in Belgium or joint venturing in India. Eileen Murphy, a marketing specialist within International Support Services in Field Engineering, is a member of the Corporate Communications Committee, and Ellen Richstone, Data General assistant treasurer, is the Data General corporate designated member. She sits on the Finance and Banking Committee.

Upcoming events include the "International Cash Management and Foreign Exchange" conference for financial executives being held in Brewster, Massachusetts, May 29 and 30. Speakers for the presentations represent both corporate and banking perspectives and are recognized experts in their field. Ellen has been instrumental in the planning of this conference.

Data General Paves Way For INROADS



INROADS officers (from left) Walter Murray, Otis Jackson, and, far right, Reginald Dickson, visited Data General last week and met with Mike Albert, manager of Equal Opportunity Programs, and other members of the Human Resources department to discuss the INROADS program.

INROADS, a career development organization geared toward college-bound minority students interested in business or engineering careers, got a helping hand from Data General recently. Data General contributed \$20,000 to sponsor internships for eight minority college cooperative students at Data General facilities in Massachusetts and North Carolina.

The INROADS college internship program consists of four years of academic, professional, and personal coaching and training, combined with summer cooperative employment at a local sponsoring company, such as Data General. These students are provided with both academic and "real world" learning environments.

The INROADS program steps in before the students enter college. The pre-college component offers intensive academic instruction in math, science, and communication skills, as well as career counseling and training to help students succeed in college.

According to Mike Albert, corporate manager of Equal Opportunity Programs, the corporate sponsor develops career plans and performance evaluations for its college interns, and provides an advisor for the students while employing them each summer during their college undergraduate years.

At Data General, this program was piloted last year at Apex. Three interns were selected last summer from INROADS' participants and each of them will be invited back to Data General this summer. Apex expects to add two more interns this year. Four of these students will be working in either Test Engineering or Quality Engineering, while the fifth will work in the Human Resources department.

This spring, INROADS opened an office in Boston to recruit Boston and Worcester area minority students for placements in Massachusetts' companies. Two interns are expected to be selected by Data General for assignments in Westboro and one in Southboro. The students in Westboro will be working in the Human Resources department and the Software Development

Division. The Southboro student will be working in one of the engineering groups. All three students will be placed in areas where their contributions will be key for both Data General and their careers.

"These students are provided with an opportunity to get exposure to many phases of business," Mike says. "What makes INROADS different is the amount of support involved. This is a four-year commitment. If the student wants, he or she can remain with us for the duration. After he or she graduates, we would hope that the student would want to join us on a full-time basis. The program benefits all concerned."

Sending It Overnight?

Many times throughout the course of each business day, Data General employees routinely make arrangements to send or receive letters, documentation, and small packages on a priority basis for delivery the next business day. These could be to, from, or between customers, vendors, Data General offices, or a variety of other organizations vital to the company's operation.

For your benefit, Corporate Traffic has contracted for the services of air and surface couriers who will serve Data General.

Employees should keep the following rules in mind when arranging for priority deliveries:

1. *Airborne Express* should be utilized for all next-day letters and small packages shipped *more than 400 miles*.
2. *Purolator Courier* should be used for all next-day deliveries for letters and small packages shipped *less than 400 miles*.
3. All shipments from a Data General location where Data General is responsible for paying the freight charges should be sent "*prepaid*" or "*bill to sender*".
4. Shipments to a Data General location from a source outside the company with Data General responsible for the freight charges should be sent "*collect*" or "*bill to consignee or recipient*".
5. Shipments sent between points which are not Data General locations, but find Data General responsible for the freight charges, should be billed to "*3rd party*" and Data General should be specified. Any employee arranging for a 3rd party shipment should contact Joe Talamini at Corporate Traffic in Westboro at extension 6589 to receive a required authorization number before shipping arrangements are made.

(NOTE: Shipments to, from, or between Data General locations do not constitute a 3rd party shipment even though the "bill to address" is Corporate Traffic.)

These rules are especially important when an employee is requesting someone outside of Data General to ship priority materials to them when the sender would normally designate the courier and shipping terms himself.

Because of the nature of this service, next-day priority shipments are an expensive way to ship or communicate and should only be utilized when absolutely necessary. This service should not be used in place of proper planning.

When the use of priority shipments is required, these rules should be applied to ensure the most efficient combination of service and cost available to Data General.

Employment Verification

Financing a house? Buying a car? Renting an apartment? If you need an employment verification for any of these reasons, contact the Human Resource assistant assigned to your department. These assistants are listed below. Please note that all employment verifications must be submitted in writing with your signed authorization. Information Release Forms can also be obtained from the Human Resource Assistant assigned to your department. Release forms issued by lending institutions are also accepted. Proper use of these forms will help you speed up the verification process.

Departments:

Group Marketing
Japanese Business Division
Public Affairs
Public Relations
Ed. Services
Cont. Products

Special Systems

Systems Development Division

Communications Systems Group

Legal
Finance
Corp. Mfg.

Sales and Systems

Federal Systems Div.

Field Engineering
Milford Facility

Contacts:

Ginny McCarthy - X4602
Westboro - B214

Dolores Young - 221 X1541
2400 Computer Drive-
Westboro

Carmine Morrison - 220
X7195
Southboro - 6-1

Donna Hopkins - X4585
Westboro - E111

Margaret McManus - X4567
Westboro - E132

Carol Dugard - X6660
Westboro - E231

Sue Hunt - X6630
Westboro - A237

Delia Braga - X4574
Westboro - A237

Lee Ann McGowan - X3940
Westboro - A237

Milford Payroll - X2780
Milford - M314

Make Sure To Fill Out A W4

The Tax Reform Act of 1986 requires that all employees submit a new W4 or W4A form to Data General no later than October 1, 1987. Failure to comply with this law can result in a higher federal tax withholding.

If a new W4 or W4A form is not submitted to your local Data General Payroll department by October 1, the Payroll department is required to alter employee exemptions according to the new law.

The law states that "If a new W4 or W4A form is not submitted, the employer must withhold if the employee were single, claiming one withholding allowance, or married claiming two withholding allowances, depending on whether the employee checked the 'single' or 'married' box on the most recent W4 form on file with the employer."

W4 or W4A forms can be obtained at your local Payroll department.

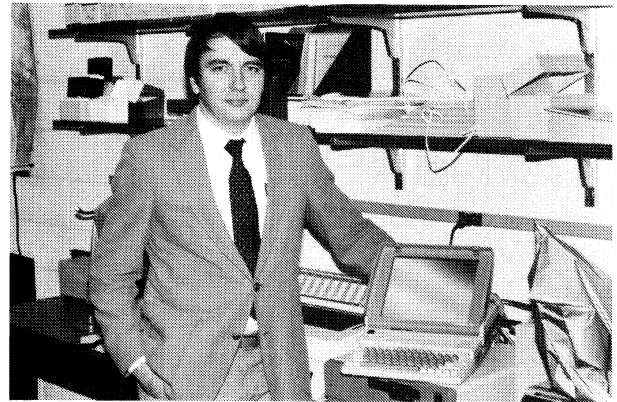
If you need help in filling out the form, the Internal Revenue Service's Taxpayer Service group can provide assistance.

Simoneau Named Treasury Person Of The Quarter



Jane Simoneau, a leasing specialist within the Customer Finance group, recently was named the Treasury Person of the Quarter. She was chosen for this award for booking 244 percent of her goal of lease transactions for that quarter. According to George McClelland, vice president and treasurer, who is shown giving the award, Jane "exemplifies the kind of person who makes Data General successful. She is to be congratulated and thanked for her efforts." Jane has been with Data General for nine years.

Brigham Young University Uses Laptops



Paul Alan Cox, associate professor of botany at Brigham Young University in Provo, Utah, displays one of the five DATA GENERAL/One computers which the company donated to the school last year. Being used by members of the science department, the DATA GENERAL/Ones are supporting field studies ranging from the work done on the Utah prairie dog, a threatened species, to analysis of plants believed to be able to treat cancer victims. According to Paul, "the DATA GENERAL/One has been invaluable and has become my most prized piece of research equipment."

Westboro

Hypertension Screening Clinic Scheduled

During the month of May, Health Services in Westboro will be sponsoring a hypertension screening clinic on each Tuesday and Thursday. The clinic will be held in the main cafeteria. The clinic schedule is as follows:

Tuesday, May 12 and Thursday, May 14 - 1 p.m. - 4 p.m.
Tuesday, May 19 and Thursday, May 20 - 8:30 a.m. - 11:30 a.m.
Tuesday, May 26 and Thursday, May 28 - 1 p.m. - 4 p.m.

People

In Customer Service

Susan Stock has joined Data General as a Marketing specialist within the Software Products Service Division. She reports to Ken Miner, manager of Product Marketing. Susan will be responsible for Marketing activities involving software products and services.

Prior to coming to Data General, she was a consultant. She holds a bachelor's degree from the University of Buffalo, and a master's degree from Boston University.

Finance

Bill Monica has joined Data General as a manager of Corporate Accounting, reporting to Tom Herriford, director of Corporate Accounting. Bill will be responsible for general and international support, consolidations, tax accounting and external reporting.

He was most recently employed with Coopers and Lybrand. Bill holds both a bachelor's and a master's degree from the University of New Hampshire.

In Systems Development

Jay Walaters joins Data General as a software engineer within the Systems Development Division. He reports to Arlen Hall, senior project leader. Jay is responsible for the design and development of system tools for the AOS/VS and AOS/DVS operating systems.

Prior to joining Data General, Jay worked for Tele-Composition as a programmer/analyst. Jay holds a master's degree from the University of Massachusetts and a bachelor's degree from the University of Delaware.

In Marketing

Laura Nelson recently has joined Data General as an International Software specialist within the Marketing division. She reports to Brigitte Casemyr, International Software manager.

Laura will be responsible for coordinating translations of CEO comprehensive electronic office software revisions and testing, and will work with developers to resolve international concerns.

Prior to joining Data General, Laura worked for Layered Inc., where she was a product analyst, and has worked for Harvard Management Co. Laura holds a bachelor's degree from Barnard College in New York.

In Field Engineering

Bob Kenny has been promoted to manager of Field Engineering's Contract Services group for Areas 2, 3, National and Government accounts.

Most recently, Bob was a section manager within Contract Services Administration (CSA) and prior to this, he has held a variety of positions in the Logistics group. Bob holds an associate's degree in business management and is working to complete his bachelor's degree from Bryant College. Bob reports Craig Miller, manager of Headquarter Operations.

Greg Mazmanian has joined CSA as a manager of Contract Services also reporting to Craig Miller. Greg oversees Areas 1, 4, National Accounts, and Software Services.

Prior to coming to Field Engineering, Greg was a Finance manager in the Hooksett facility. He has been

with Data General for nine years. Greg earned his bachelor's degree in economics from Bentley College.

Geri Coenen, previously an acting manager, has become permanent section manager in CSA responsible for Areas 2, 3, Extended Warranty and various National Accounts. She reports to Bob Kenny.

Geri holds a bachelor's degree in marketing from the University of Akron and a master's degree from Assumption College. She has been employed by Data General since June of 1986. Before that, she was previously employed by S.K. Wellman in Cleveland.

Carol Donahue, previously an acting manager, is now the section manager responsible for Areas 1 and 4. She recently was senior Operations analyst in the Plans and Controls group.

Carol has earned a bachelor's degree from Assumption College and a master's degree in business administration from the University of Massachusetts. She has been employed by Data General since July of 1986. She was previously employed by Harvard University.

Cheryl Casavant has been named section manager overseeing the Contract Processing group and Software Services. Cheryl has held a variety of positions within CSA. She is a graduate of Bryant College with a bachelor's degree business administration. Both Carol and Cheryl report to Greg Mazmanian.

Toastmasters To Meet May 13

The next meeting of the Toastmasters will be devoted to a review of the best and the worst speaking performances which have been videotaped over the past few months. The meeting is scheduled for Wednesday, May 13, at noon and will be held in the MTI room B, near the Information Resource Center in Building 14A.

Toastmasters meetings provide an opportunity to gain experience in formal and informal speaking situations. For further information, contact the club president, Lydi Losch, via CEO at host CHALLENGER or extension 3363 in Westboro.

Training

Education Center Course Update

Educational Services is offering a number of software and hardware courses to all Data General employees. All classes will be held at the Education Center at 2400 Computer Drive in Westboro.

Software

- **Introduction to MS-DOS (S145)** - This comprehensive course teaches employees how to use the features and functions of the MS-DOS operating system. This two-

day course starts on Monday, June 1.

- *Using Advances Features of MS-DOS to Manage Your System (S146)* - Employees will learn how to use additional features and functions of the MS-DOS operating system. This course is for experienced MS-DOS users who wish to become familiar with more advanced MS-DOS functions. This course starts on Wednesday, June 3.

- *CEO CONNECTION (S154E)* - This one-day course teaches employees how to configure, load, install, and prepare workstations and host computer systems to use CEO CONNECTION. The use of CEO CONNECTION and conversion of documents is also covered. This course will be held on Friday, June 5.

- *DG/SQL Utilization and Design (S317)* - This course is designed for data processing professionals who require working knowledge of Data General's non-procedural, SQL-based, full implementation of the relational model database management system (DG/SQL). This five-day course starts on Monday, June 1.

Hardware

- *Introduction to Data General 16-Bit Computer Systems (H100)* - Employees will learn the Data General basic instruction set, console operations (standard and virtual), and I/O operations (interrupt, data channel and BMC). This course provides an overview of mass storage devices (disk and tape) as well as other Data General communications technology. This ten-day course starts on Monday, June 1.

- *Introduction to Data General 32-Bit Computer Systems (H100/MV)* - This course presents the evolution of Data General computer architecture from a 16-Bit design to the 32-Bit design used in the ECLIPSE MV series computer systems. Explains the terminology of virtual storage systems and introduces hardware design features to a functional, conceptual level. Participants will receive a complete systems perspective including an overview of mass storage devices, terminals, printers, and data communications. Practical experience with power-up procedures, console operation, and initial diagnostic procedures will also be given. This ten-day course starts on Monday, June 1.

Prior approval of your supervisor is required for course registration. To enroll, simply call (tie-line) 221-1647 and confirm your registration.

Activities

Road Race Entry Deadline Is One Week From Today

Next Tuesday, May 12, will be the last day to enter the Dasher Road Races scheduled for Friday, May 15.

Entry forms should be sent to the Dasher Road Race, Mail Stop E-111 in Westboro as soon as possible.

Included will be 3-mile and 10-kilometer foot races and a 15.5-mile bicycle race. Bike race participants are required to wear hardshell helmets.

Competitor numbers will be sent out several days before the race. Cyclists will have numbers 101-199; the 3-mile runners will wear numbers 301-599; and the 10-kilometer runners will race with numbers in the 601-699 series. Eric Engberg, Race Committee chairman, urges each participant to check the number assigned to him/her. "All races start simultaneously," says Eric. "The assigned numbers are the only way we have to determine the results."

Anyone interested in serving as a race day volunteer should contact Eric at extension 6521 in Westboro. Also, there will be a meeting of Race Day volunteers at 4 p.m. on Thursday, May 14, in Westboro's main cafeteria. The Dasher races are sponsored by the Data General Activities Committee solely for Data General's employees.

Mini News is published weekly for the employees of Data General-Westboro. Material may be submitted for publication to Mary Anne Been at extension 4705 or MS A235. Data General - An Equal Opportunity Employer.

MARKETPLACE

CARPOOL

Ride/Carpool, from Arlington to Westboro, flexible, Pete x5469.

Ride/Carpool, looking to join or form new from South End to Westboro, Frank x3340.

Carpool, from Oxford to Westboro, Sue x4089.

Ride/Carpool, from Springfield/Palmer to Milford, Ron x2487.

Carpool, looking to join from Brighton/Allston/Brookline/Newton Ctr. to Westboro, Charlie x6936.

Carpool, from Brookline to Southboro/Westboro, flexible, Katz x7093.

Ride/Carpool, from Chelmsford to Westboro, 7:00 - 8:00 to 4:00 - 5:00. Duane x6731.

Ride, from Whitinsville to Westboro, Rosemary x5615.

Ride, from Marlboro to Milford, 8:00-8:30 to 5:00-5:30, Helen x2137.

FREE

Refrigerator, Gibson, 8 cu. ft. 473-4347 (Milford).

Kittens, to good home, 3 all white, avail. in 2 weeks. 460-1835 (Marlboro).

Dogs, 3 full grown AKC registered lab retrievers, 5 yr. old black, spayed female, 1 1/2 y. old black male, 1 1/2 yr. old yellow male. 870-5768 (Westboro).

Kittens, 2 tigers, 3 black/white, 6 weeks old. 842-6767 (Shrewsbury).

Refrigerator, 8 cu. ft. 473-4347 (Milford).

FOR RENT

use, 2 bdrms., near lakes, hiking, boat landing, cable, deck, in Plymouth, VT., \$225/wk., \$100/wknd. 464-2714 (Princeton).

Apartment, bottom floor, 2 bdrms., living rm., dining rm., storage rm., washer/dryer in basement, 2 deeded parking spaces, avail. June 1st., \$850/mo. + util. 923-0709 (Watertown).

Summer Rental, Salisbury Beach, from \$200/wk. to \$435/wk., (603) 893-3464 (Salem, N.H.).

Duplex, 1 yr. old, 3 bdrms., 1 1/2 baths, dining room, \$875/mo. + util. 875-2320 (Framingham).

Apartment, Worcester, off Hamilton st., 6 rms., 2nd floor, stove incl., \$500/mo. + util. 752-0816 after 5:00 pm. (Worcester).

House, Martha's Vineyard, newly renov., 4 bdrms., 2 baths, lg. deck, mins. to beach, rights to tennis courts, pond fishing/swimming, avail. June/\$900 wk., July/\$1000 wk., August/\$1100 wk. 777-2082 eves. (Danvers).

Chalet, Lake Ossipee, N.H., walking distance to private beach, 3 bdrms., 2 baths, \$300/wk. 528-2028 (Franklin).

Cottage, small, 2 bdrms., beach across street, families only, 5 people max., no pets, \$350/wk. 587-7517 (W. Bridgewater).

Apartment, 2nd flr., newly remodeled, W/W, full bath, 10 min. to 495 \$575/mo. heat included. 883-1645 after 6:00 pm. (Blackstone).

Apartment, 1 bdrm., first floor, walking distance to Westboro ctr., available immed., \$430/mo. heat included. 366-8222 (Westboro).

Condo, brand new, 2 bdrms., pool, tennis, laundry facilities, A/C, in Cumberland R.I., \$550/mo. + util. (401) 397-7604 (Coventry R.I.).

House, Dennisport, 3 bdrms., enclosed porch, deck, cable tv., walk to beach, \$595/wk. 562-3274 after 4:30 pm. (Hudson).

Apartment, hot water, stove, refrigerator, 4 rms., 3rd floor, 365-7247 after 4:00 pm. (Clinton).

Summer Chalet, Lake Ossipee Village, NH., 2 bdrms., 2 baths, furnished, walk to private beach, \$300/wk. 696-6065 (Milton).

Cottage/Condo, Dennisport, 2 bdrms., w/deck, 1/10 mi. to beach, \$450/wk., \$295/off-season wk., 435-3794 (Hopkinton).

Efficiency, Dennisport, w/fenced patio & pool, 2/10 mi. to beach, \$3000/season, \$295/wk., \$175/wk. off-season, \$50/off-season wknd. 435-3794 (Hopkinton).

Condo, 2 bdrms., near 290, washer/dryer, all electric, A/C, available June, \$595/mo. + utilities. 568-0155 (Hudson).

House, 3 bdrms., deck, near beaches and boat landings, Falmouth, June \$300/wk., July & August \$400/wk. 923-1489 (Watertown).

House, Cape style, 2 floors, 2 lg. bdrms., single bath, 2 small rooms off bdrms, unfurnished, utilities extra. \$700/mo + sec. dep. 234-2713 (Northbridge).

WANTED

Room, in a house/townhouse to share in metro west for male, prefer to share w/non-smoker male/female, 393-9002 after 8:00 pm. (Northboro).

Roommate, to share 2 bdrm. apartment, 3rd floor, pool, deck, washer/dryer, \$350/mo. + elec. 870-0633 eves. (Westboro).

Roommate, to share 2 bdrm. townhouse in Framingham area, A/C, ceiling fans, 1 1/2 bath, finished basement, plenty of storage & parking, June occup., \$480/mo. heat/hot water incl., 872-8342 leave message. (Framingham).

Roommate, to share apartment in Boston area, non-smoker, 628-1617 (Somerville).

Roommate, to share modern 2 bdrm. condo in Westboro, fully appl., pool, tennis, laundry, June 1st occup., \$325/mo. + 1/2 util. 366-9430 after 6:00 pm. (Westboro).

Roommate, 1st floor, separate living room & entrance, large kitchen, \$280/mo. + 1/2 util. 754-1908 (Worcester).

Roommate, to share condo, N. Framingham, \$330/mo. avail. June 1st. 481-6747 (Marlboro).

Roommate, non-smoking, female, to share townhouse on Worcester/Holden line, easy access to 190 & 290, off street parking, \$190/mo. heat incl. 856-9485 (Worcester).

FOR SALE

Jukeboxes, 100 play Wurlitzer, \$500; 120 play AMI, \$500; both need restoration. 476-3587 (E. Douglas).

Range, gas, Welbilt, 30" avocado w/matching range hood, \$50/BO. 366-2412 after 5:30 pm. (Westboro).

Kittens, 1/2 Siamese, \$10/ea or BO. 799-9201 after 5:00 pm. (Shrewsbury).

Items, Minolta XE5 35mm camera, w/equipment, BO; Schwinn, 10 spd. bike, ladies, used twice, BO. 460-1835 (Marlboro).

Timeshare Condominium, Cape Winds resort in Hyannis, 1 mi. to beach, sleeps 4, laundry, pool, hot tub, deeded, last week in June or can be exchanged to anywhere in the world thru Interval International, \$12,000. 278-5360 after 5:00 pm. (Uxbridge).

Televisions, Sony 12" color, \$100 firm; Sony 19" color, \$100 firm, 429-5723 (Holliston).

Lawn Mower, Toro, 21 in. push type rotary, used once, \$150. 853-0889 (Worcester).

Waterbed, king size, w/heater, side pads, double set of drawers, bookshelve headboard w/mirror, matching dresser w/mirror, 7 drawers, bureau w/6 drawers, end table & lamp, \$975. 222-0883 (Attleboro).

Camper, 10 1/2 ft. slide in camper, sleeps 4, completely self contained, \$1995. 754-3389 after 5:00 pm. (Worcester).

Refrigerator, Westinghouse, 2 door, frost free, ivory color, 19+ cubic ft., glass shelves, under warranty, \$500/BO. 923-0709 (Watertown).

Boat, 16 ft. Glaspar boat, 70 hp. Chrysler motor w/trailer, \$1600/BO. 248-5226 (Charlton).

Golf Clubs, complete set of Wilson 1200 lt golf clubs, \$175. 529-4427 after 7:00 pm. (Upton).

Computer, Timex Sinclair 1000, 16k ram module, 3 cass., user manual incl., \$100. 756-5701 eves. (Worcester).

Land, 2 adjoining house lots, 1/4 acre, in N. Port Charlotte, FL., will sell separately, \$4000/ea. lot 429-5723 (Holliston).

Townhouse Condo, 2 bdrms., 2 1/2 baths, 2 car garage w/workshop, pool, tennis, golf course, \$155,900. 478-7846 (Milford).

Sailing Sloop, 19' O'day Sailing Sloop, wknd model, w/trailer, sleeps 2, main jib, boom cover & pulpit, incl. all req. USCG equip. \$6900. 393-7294 after 6:00 pm. (Northboro).

House, 9 rms., 1/2 acres, 4 bdrms., 2 1/2 baths, 2 car garage, gas heat, finished basement, move in condition, 9 miles from DG, \$329,000. 877-8111 (Framingham).

House, 3 bdrms., 1 + acres, well equip. kitchen, spacious family rm. w/sliders, 9 miles to DG. 839-9523 (Grafton).

Pump, multi purpose, gas 2 cyl. Homelite water bug, 1370 gph, runs 20 hrs., was \$160, sell for \$95. (603) 642-4026 (Exeter N.H.).

Tires, 2 P185-80/R13, road handler all season steel belted radial, only 2000 miles, \$35/ea. 234-6807 (Whitinsville).

Item, resort timeshare, 45 countries, 1000 locations, \$3500. 881-1398 after 6:00 pm. (Ashland).

Lumber, pressure treated lumber, 2 yrs. old, disassembled 25" x 30" deck, BO. 966-1326 (Bellingham).

Pool Items, Hayward super pump & filter, 18 x 36 solid cover w/bags, diving board, ladder, 40' vacuum hose, 1 1/2" flexible pipe, short chain link fence, BO. 839-9638 (Grafton).

Cart, hand crafted solid oak microwave utility cart, 20" x 30" x 28", 6 drawers plus door w/adjustable shelve, pull out cutting board, light oak stained, on casters, \$225. 422-7563 (Sterling).

Items, Tuffboy lawn swings, \$15; alum. storm door, white, 32" x 80", \$20. 852-2995 (Worcester).

Items, couch, 8' black velvet w/matching chair & 3' round velvet trimmed coffee table, \$150/BO; credenza, 6' long, light mahogany formica finish, w/2 sliding doors & adjustable shelf, \$75/BO. 251-7481 (N. Chelmsford).

Truck Cap, aluminum, 33" x 8' x 6', for full size truck, w/aluminum ladder racks, \$300/BO. 528-6781 (Franklin).

Drum Set, Tama 5 pc., white, power toms, roto toms, & all access. \$1500. 485-4007 (Marlboro).

AUTOS

'68 **Dodge Dart GT**, slant six, 898-2373 (Westboro).

'73 **Pontiac Grand Ville**, convertible, P/S, P/B, P/W, A/C, new roof, garaged last 10 yrs., \$3500. 865-3190 (Sutton).

'73 **Olds Cutlass Supreme**, 2 dr., pwr steering/brakes, \$450. 754-1908 (Worcester).

'76 **Chevy Long Van**, V8, needs body work, AM/FM cass., \$550/BO. 838-2766 (Berlin).

'76 **Monte Carlo**, 350 V8, PS/PB, AM/FM, \$600/BO. 366-6554 eves. & wknds. (Westboro).

'76 **Dodge Aspen**, slant 6, silver w/red pin stripe, snow tires, needs body work, \$350/BO. 485-6259 (Marlboro).

'77 **Thunderbird**, V8, auto., PS/PB, \$900/BO. 883-3799 (Bellingham).

'77 **GMC Pickup Truck**, 250, 6 cyl., w/cap, many new & rebuilt parts, 3 spd. standard shift on floor, \$500/BO. 792-0484 leave message (Worcester).

'78 **Ford Mustang II**, 90k mi., one owner, (401) 766-8141 eves. (R.I.).

'78 **Cadillac Coupe Deville**, 2 dr., landau roof, A/C, pwr seats, pwr windows, partially reconditioned, \$3200/BO. 458-6644 after 5:00 (Lowell).

'78 **Volkswagon Dasher**, 2 dr., 4 spd., rebuilt engine, \$995/BO. 835-4923 (West Boylston).

'78 **Toyota Corolla Wagon**, 5 spd., A/C, AM/FM stereo, \$1150. 872-6026 (Framingham).

'80 **Toyota Pickup**, 4 spd., new muffler/brakes, AM/FM, w/cap, 68k mi., \$2695/BO. (603) 888-1131 (Nashua, N.H.).

'80 **Toyota Corolla**, 4 dr., silver, auto., A/C, AM/FM stereo, \$2200/BO. 877-5149 after 7:00 pm. (Framingham).

'80 **Mercury Zephyr Wagon**, auto, A/C, AM/FM cass., cruise control, PS/PB/PW/PL, rear def/wiper, \$1700/BO. 393-9329 (Northboro).

'81 **Renault 181**, 4 dr., 5 spd., 65,000 mi., \$1000/BO. 485-4007 (Marlboro).

'81 **Firebird**, 53k mi., PS/PB, V6, sunroof, 4 new tires, midnight blue w/blue int., must sell, \$3500/BO. 460-1835 (Marlboro).

'81 **Plymouth Champ**, 4 spd, AM/FM cass., high mileage. \$900. 845-8921 (Shrewsbury).

'83 **Ford Escort GL**, 4 cyl., 2 dr., hatchback, rear def/wiper, \$2700/BO. 393-9329 (Northboro).

'84 **Toyota Camry LE**, 4 dr., blue, A/C, cruise control, AM/FM stereo, 43k mi., \$8000/BO. 870-0633 (Westboro).

'84 **BMW 318i**, 5 spd., black/black, 27k mi., \$12,500. 529-3774 (Upton).

'84 **Mazda RX7 GSL-SE**, silver, 5 spd., 39,000 mi., A/C, cruise control, sunroof, PW/PB/PM, AM/FM cass., leather int., ext. warranty, \$10,500/BO. 856-9977 (Worcester).

'85 **Honda Accord**, 38,500 mi., 5 spd., AM/FM cass., A/C, chapman locks, \$8100 firm. 799-9317 leave message. (Shrewsbury).

'86 **Corvette**, 12k mi., 4 spd/ovd., red w/black leather inter., 2 alarms, all options, \$21,500/BO. 655-9261 (Natick).

'86 **VW Jeta GL**, 4 dr., sunroof, A/C, snow tires on rims, \$8200. (603) 642-4026 (Exeter, N.H.).

'86 **Olds Delta 88 Royale Brougham**, 4 dr., 10,300 mi., under warranty, all power, A/C, AM/FM stereo w/cass., \$12,900. 798-3497 (Worcester).

'87 **Chevy Spectrum**, 4 cyl., FWD, cloth int., rear defroster, AM/FM cass., 6 yr./60,000 mi. warranty, 3000 mi., \$8000/firm. 278-5360 after 5:00 pm. (Uxbridge).

HOURS

Westboro Cafeteria, full breakfast, 6:30 a.m.-10:00 a.m.; lunch, 11:30 a.m.-1:30 p.m.; open from 6:30 a.m.-3:00 p.m. for beverages.

Pizzeria, serving from 10:00 a.m.-2:00 p.m.

Pumpernickel's Deli, Coffee & pastries, 6:30 a.m.-7:30 p.m.; full breakfast, 6:30 a.m.-10:00 a.m.; deli lunch, 11:00 a.m.-2:00 p.m.;

Take-out, 3 p.m.-6:30 p.m.; dinner, 5 p.m.-7:30 p.m.

Milford, full breakfast, 6:30 a.m.-8:30 a.m.; lunch 11:15 a.m.-1:15 p.m.; open from 6:30 a.m.-3:15 p.m. for beverages.

Southboro, full breakfast, 6:30 a.m.-10:00 a.m.; lunch 11:15 a.m.-1:00 p.m.; open from 6:30 a.m.- 3:00 p.m. for beverages.