

Mini News

News For The Employees of Data General

August 23, 1985

Data General Rates High In Datapro Survey

A recent survey conducted by Datapro Research Corp. rates Data General's ECLIPSE MV/Family of 32-bit computers higher in overall customer satisfaction than systems from such major competitors as IBM, Digital Equipment, Hewlett-Packard and Prime. The score was based on ease of operation, reliability, service and software availability.

The research firm polled more than 1700 computer users in compiling its results.

More than 95 percent of the Data General computer users surveyed believe their systems perform the way they "expected." Only Tandem Computer and Hewlett-Packard customers were more positive in their responses. When asked if they would recommend the system to another user, 95 percent of the Data General users said they would; while none said they would not. The rating beat out all other vendors except Harris Corporation.

Three-Day Weekend Ahead

Monday, September 3 is Labor Day, a paid holiday for Data General employees. For Westboro and Southboro employees, time cards for the week ending August 31 will be given out Wednesday, August 28 after 1 p.m. and are due back in Payroll on Thursday, August 29 at 10:30 a.m. Any unscheduled overtime should be recorded on the following week's time card.

Data General Goes To The Races



The Toyota MR2 stock racer, which utilizes a DATA GENERAL/One personal portable computer, this week visited Milford, Westboro and Southboro, allowing hundreds of employees to view the high-performance auto. Also on-hand were Warren Witherell of Pico magazine, the developer of the computer software that monitors the car's performance, and driver Rich Danzer. The car will be racing on Saturday, August 31 at Lime Rock Park, Connecticut.

For most race car drivers, winning requires a high-powered engine, superb pit crew and the ability to make driving decisions in a split second.

But for race car driver Rich Danzer, the ten-pound DATA GENERAL/One personal portable computer is an ingredient of that winning prescription. Throughout the summer, Rich has toted the system to some of the meccas of the U.S. racing world (Sebring, Watkins Glen, Sears Point and Riverside) where it has become vital in his quest to cop endurance racing's highest prize.

Rich's Toyota MR2 is currently ranked sixth in Playboy Magazine's Sports Car Club of America Showroom Stock Endurance racing series. His next race is Saturday, August 31 in Lakeville, Connecticut at Lime Rock Park.

Endurance races are conducted with cars off the dealer showroom floor. The only modifications (roll

bars, racing-type seat belts, etc.) are made for safety's sake. This type of racing is an opportunity for manufacturers of automobiles, tires and lubricants to showcase and test their products since the cars are operating under mechanically stressful situations. Races are scored by the number of laps within a certain time period, sometimes lasting up to 24 hours.

Rich attributes this season's success to the MR2's reliability and maneuverability, as well as the adeptness of his pit crew which has kept him in contention in races thanks to its quick tire, fuel and brake pad changes.

But Rich also is quick to cite the role of the DATA GENERAL/One as key to his performance this season.

"Our new edge in the racing series is the DATA GENERAL/One computer," says Rich. "It's application in endurance racing not only makes life easier, but it is making our racing effort much more competitive, therefore giving us an advantage."

Why the computer? "Simple," says Rich. "In an endurance race, it is extremely difficult to keep track of your position since cars are constantly stopping for fuel, tires, driver changes and mechanical repairs. In the past, we tried to do lap charts with a pen and paper, but it was very time consuming and often inaccurate. It is helpful to our race strategy to know the lap times for fuel and tires and how long those stops take. Based on that information, we are able to easily calculate the pace we need to either maintain, to stay in front or to gain a position.

"In endurance racing it is especially important to set a pace that both the car and drivers safely can live with. Therefore, if it is determined that we can slow down without losing a position, we save tires, fuel, brakes, and the car, thus increasing our chance to win."

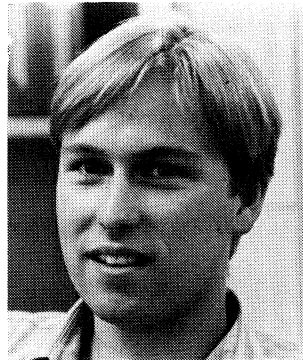
According to Rich, the pit crew member using the DATA GENERAL/One portable computer records car number, lap number, elapsed race time, and lap time to the nearest tenth of a second for each car competing in the race. It also keeps track of each car's pit stop. To understand just how well Rich's car is performing in the race, the crew simply prints out the results whenever needed.

"In a race where an edge in strategy planning can make all the difference, computer technology has found some new friends," says Rich.

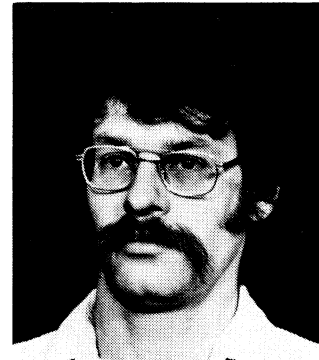
If you are interested in seeing the car perform at the upcoming race at Lime Rock, discount tickets are available to employees at \$15 each. They can be obtained by sending a self-addressed stamped envelope and a personal check payable to the Data General Employee Activities Committee to: T.Teller, MS-C117, Westboro. Children under 12 are admitted free. Track gates open at 7:30 a.m. and the race starts at 11:30 a.m.

Central Processor Development Director's Awards

A group of employees from Central Processor Development (CPD) were recently presented Director's Awards for their contributions to engineering projects at Data General. "These employees, through their performance and commitment, have made outstanding contributions to ensure the success of CPD's programs," says CPD Director Bill Avery. Bill congratulated the entire development group for its efforts in major new product development.



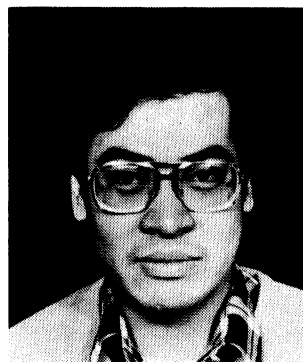
Jeff Brown



Bill Baxter

Jeff Brown received an award for his work on the ECLIPSE MV/10000 SX computer, which required long-distance coordination with employees at Research Triangle Park in North Carolina. Bill Baxter was recognized for his contributions ranging from microcode and gate array design, to training recent college graduates.

Charlie Hopkins received an award for pioneering a hardware prototype to support a new operating system design. Mark Travaglio received the award for contributions that benefited Data General's Sunnyvale facility.

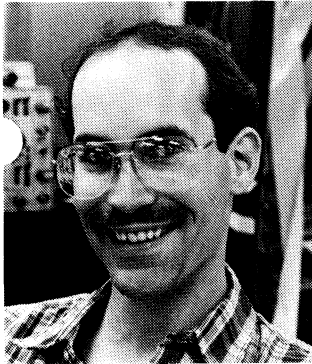


Ken Mak

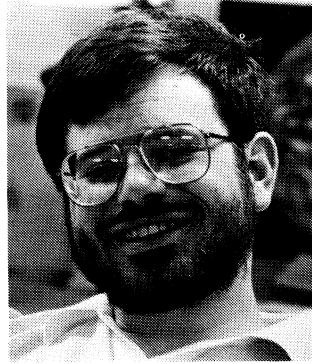


Ruth Shelley

Ken Mak was cited for his work on several design solutions that benefited both Data General and one of its suppliers. Ruth Shelley was recognized for supporting her project team in simulation and design as well as her own gate array designs.



Pat Weiler



Jay Wilkinson

Pat Weiler was commended for his contribution to the Engineering Tools group and Manufacturing, as well as supporting vendors in the Far East. Jay Wilkinson was cited for providing microcode solutions and tools to several projects.

What A Portable Can Do For You

A videotape on how the DATA GENERAL/One personal portable computer can help sales people operate more effectively will be shown in the Westboro cafeteria next Tuesday from 11:30 a.m. to 1:30 p.m. The videotape, distributed to computer dealers around the United States, focuses in on the advantages management-software packages hold for portable computer users.

Intelligent Controller Connects Broadband Network

Data General has introduced an intelligent broadband controller (IBC) board that enables ECLIPSE MV/Family computers to connect with Ungermann-Bass Net/One broadband local area networks. The price of the IBC board is \$6500.

The IBC completes a marketing agreement between Data General and Ungermann-Bass, announced in January of this year.

Under the agreement, Ungermann-Bass sells to Data General customers the components of the Net/One broadband local area network. Data General markets and sells the IBC, or the broadband LAN interface circuit board, which is compatible with the Ungermann-Bass components. In addition, Ungermann-Bass provides network design assistance and documentation for Data General customers.

With this arrangement, Data General can offer customers both broadband and baseband local area

networking solutions. Broadband provides long-distance and high-volume support ideal for communications between buildings; baseband offers ease-of-use and flexibility for communications within a single building. Many customers are best served by a combination of the two.

Data General Announces DIA/DCA Interface

Data General has introduced CEO Document Exchange Architecture (DXA), the company's interface with the IBM Document Interchange Architecture/Document Content Architecture (DIA/DCA).

By supporting DIA/DCA, CEO DXA software enables Data General 32-bit computer users to exchange documents, messages and other information with other vendors' systems over IBM SNA networks. Users can view, edit and print documents from either Data General's CEO Comprehensive Electronic Office environment or the IBM Distributed Office Support System (DISOSS) environment.

CEO DXA for Data General 32-bit computers ranges in price from \$1500 to \$6500.

Enhancements Made To Native And Hosted UNIX

Data General has made enhancements to its native UNIX (DG/UX) and hosted UNIX (MV/UX) software operating on 32-bit ECLIPSE MV/Family computers and Distributed Systems (DS) series engineering workstations.

DG/UX has been upgraded to support AT&T's System V Release 2 Version 2 UNIX and now offers extensions from the UNIX 4.2 Berkeley Software Distribution for superior program compatibility.

MV/UX, which integrates UNIX with Data General's Advanced Operating System/Virtual Storage (AOS/VS) software, has been enhanced to include System V Release 2 Version 2 features. Other enhancements to MV/UX more fully combine the strengths of AOS/VS and UNIX, offering the user improved performance.

DG/UX and MV/UX also support TCP/IP (Transmission Control Protocol/Internet Protocol), an industry-standard communications protocol that enables the DS/Family and ECLIPSE MV/Family to co-exist in local area networks consisting of both Data General and non-Data General equipment.

Training Scheduled In September

Educational Services is offering the following hardware, software and CEO Comprehensive Electronic Office courses to Data General employees. All courses will be held at the Education Center, 2400 Computer Drive in Westboro. Supervisor's approval is required prior to registration.

Classes range in length from one-half day to 10 days; most are five days long. Course numbers ending in E indicate that the class is offered to employees only. For course information or to enroll, call Central Registration and Information at extension 4079 in Westboro.

Start Date	Course Number	Title	
9/3	S100E	Introduction to Small Computers	
	OA144	Executive CEO Mail and Calendar	
9/4	S142	PRESENT for Programmers	
	S406	INFOS II Database Design	
9/9	S209	AOS and AOS/VS User	
	S219/VS	AOS/VS System Manager	
	S222	Managing CEO (Non-Technical)	
	S316	DG/DBMS Utilization & Design	
	SH100	RDOS Operator Training	
	SM330	Database Design	
	OA141E	Getting Started with CEO Word Processing	
	H100	Diagnostic Operating System User	
	9/11	OA142E	Advanced CEO Word Processing Topics
	9/12	OA145E	Getting Started with PRESENT
9/13	OA147E	CEO List Processing	
9/16	S102	NOVA Assembly Language Programming	
	S140	Introduction to Data Communications	
	S221	Managing CEO (Technical)	
	S306	INFOS II Utilization and Design	
	SH109	AOS Operator Training	
	SM230	Introduction to the MV/UX Environment	

Start Date	Course Number	Title
9/17	S160E	Introduction to CLI
9/18	S220	XODIAC System Manager
9/19	S161E	CLI Macros
	SM131	C Language: An Introduction
9/23	S105	ECLIPSE Assembly Language Programming
	S105/VS	ECLIPSE MV/Family Assembly Language Programming
	S113	Data General FORTRAN 77
	S209	AOS and AOS/VS User
	S142E	PRESENT for Programmers
	S317E	DG/SQL Utilization & Design
	SM233	Local Area Network Design
	OA141	Getting Started with CEO Word Processing
	H100	Data General Computer Architecture
	9/25	OA143
9/26	OA142	Advanced CEO Word Processing Topics
9/27	OA147	CEO List Processing



Megatechs Show Their PRIDE

The Megatechs PRIDE Circle, consisting of technicians in the Power Supply Repair department in Milford, worked together as a team and met a challenge that recently arose in its work area. The group felt that too much time was being spent on recycling pre-DTOS and final inspection rejects. To resolve this issue, they developed as its project two courses on soldering and inspection procedures for complex boards flowing through the Power Supply area.

In presenting its project, the Megatechs showed how implementation of the training courses would reduce inspection rejections by more than 50 percent and result in significant time and cost savings. The group received the approval and support from its managers and Field Engineering Steering Committee, headed by Roy Fortney, director of Field Engineering Logistics.

"Through this project, the Megatechs exhibit quality awareness and pride in their work. I was impressed by their resolution of the issue through training," says Steering Committee member Ed White, Eastern Operations manager.

According to Ken Perreault, senior facilitator for the Field Engineering PRIDE Circle program, "The

Mini News is published weekly for the employees of Data General-Westboro. Material may be submitted for publication to Joy Ibrahim, extension 4705, MS A235. Data General - An Equal Opportunity Employer.

Megatechs have been trained in the techniques and the philosophy of the PRIDE Circle program, and this shows in their work. They display a willingness to look at problems and to take responsibility for resolving issues."

Members of the Megatech PRIDE Circle are: Leader Mike Harrington, Co-Leader Mark Driscoll, Dan Hanson and Lew Simeone, group leader in the Power Supply area.

Milford School Committee Honors Data General



The Milford School Committee recently honored Data General during a school board meeting for the company's donation of computer equipment, training and service to Milford High School. Thomas Bankert (center), director of Service Technology in Field Engineering, accepts a plaque in recognition of the donations from School Superintendent Dr. Thomas Cimino (left) and Anthony Allegrezza, School Committee chairman. Since 1983, Milford High School has received 28 Data General DESKTOP GENERATION terminals, an ECLIPSE S/140 computer, and associated computer peripherals.

Westboro

Boston University Conducts Interactive Video Courses

Corporate Management Organizational Development (M.O.D.) is sponsoring a set of Boston University (BU) engineering and computer courses through BU's Interactive Network. The classes are given on campus at BU, but will be televised live at Data General-Westboro and other companies.

Courses can be taken on a special student basis or as part of a formal BU degree program. Tuition is \$1896 for a four-credit course and \$948 for a two-credit course. Payment can be supplemented through Data General's Educational Assistance Program.

Course descriptions are available from Corporate M.O.D. at Mail Stop D134 or by calling extensions 6958 or 5419 in Westboro.

Westboro Alarm Testing

The monthly fire alarm and sprinkler systems testing will take place Sunday, August 25 in Buildings 14A and 14B in Westboro. Alarm testing will begin at 8 a.m. until noon and sprinklers will be checked from 9 a.m. to 1 p.m.

Activities

Tenpin Strikes Up Fall Season

The Data General Tenpin League is gearing up to begin its fall season on Tuesday, September 3 at 7 p.m. at the Lincoln Lanes in Worcester. The Wednesday evening league begins on Wednesday, September 11 at 4:45 p.m. at Town & Country Lanes in Shrewsbury.

Employees interested in bowling, should complete the form below. Any four persons wishing to bowl together as a team should submit ONE form containing all of the names.

Return the forms for the Tuesday night league to Scott Bryant, Mail Stop E111 in Westboro and for the Wednesday night league to Jo Dudek at Mail Stop E111.

For more information on Wednesday bowling, contact either Jo Dudek at extension 3326 in Westboro or Elsie MacDonald at extension 7422 in Southboro. For Tuesday night bowling, contact Scott Bryant at extension 3210 in Westboro.

Data General Tenpin League

Complete either the **INDIVIDUAL** or **TEAM** section.

Please check one: Tuesday Wednesday

INDIVIDUAL:

 Last Name First Name Initial

 Mail Stop Extension

TEAM:

 Team Name

TEAM CAPTAIN:

 Last Name First Name Initial

 Mail Stop Extension

MEMBERS:

 Last Name First Name Initial

 Mail Stop Extension

 Last Name First Name Initial

 Mail Stop Extension

 Last Name First Name Initial

 Mail Stop Extension

 Last Name First Name Initial

 Mail Stop Extension

Summer Outing Schedule

August 24	Red Sox VS Minnesota Twins Fenway Park, Boston
September 14	Riverside Park, Agawam, MA.
October 5	Edaville Railroad, Carver, MA.

Red Sox Game Time Change

Game time for the Red Sox outing tomorrow has been changed from 2 p.m. to 3:20 p.m. because the game is scheduled to be televised.

Buses to Fenway Park in Boston will depart Westboro's 14B Lobby starting at 1 p.m., with the last bus leaving at 2 p.m. Employees are reminded to bring their letter indicating the number of Red Sox tickets purchased with them to the 14B Lobby in Westboro. The tickets will be distributed as employees board the bus.

Employees not taking the bus must pick up their tickets in advance, or come to the 14B Lobby parking lot in Westboro on Saturday around 12:30 p.m. to pick up tickets.

A box lunch will be provided.

Magic Kingdom Club Cards

Planning a trip to Florida or California this winter? Be sure to get a Magic Kingdom Club card before you go. Club members and their families are entitled to discounts at Disney World in Florida and Disney Land in California. Send a self-addressed envelope to "Disney", Mail Stop C111 in Westboro.

Races Planned For Data General Runners

The Data General Runners Club (DGRC) is organizing teams to compete in two races to be held early this fall.

The Stouffer's High Tech 10K race will be held on Sunday, September 8 in Bedford and is open to all Data General employees. Last year, more than 2000 runners participated. The entry fee is \$9. To compete on a Data General team, registration must be complete by Thursday, August 29.

The Runners Club also is organizing teams to compete in the five-mile New England Corporate Cup race which will be held at noon on Sunday, September 15 at the Boston Common.

Runners Club members will have their \$5 entry fee paid by the club. To compete on a Data General team, registration must be complete by Tuesday, September 3.

If you are interested in competing or would like more information on the races, contact the Data General Runners Club at Mail Stop F036 in Westboro.

Skiers - Let's Get Started

The Data General Ski Club will be holding two organizational meetings, which will cover initial plans for the 1985-86 season.

The first meeting, to be held Tuesday, August 27 at 6 p.m. in the Westboro cafeteria, will cover organizational items including nominations, and is primarily intended for employees interested in becoming a Ski Club officer.

The second meeting will be held Thursday, August 29 at 6 p.m. in the same location and is a general meeting covering weekend trips within New England, a Western Trip, the annual Winter Carnival, Ski team, a European trip and officer elections.

Would you like to get involved? This year, there are a number of organizational positions open and employees are encouraged to become involved. To obtain more information about being an officer, send your name and Mail Stop to SKI CLUB OFFICERS Mail Stop C223.

Data General Softball League Standings

Following are Data General Softball League standings as of June 6:

National League

	Won	Lost	Tied
BOOK			
Engineering	10	3	0
Renaissance	9	4	0
Nuked	7	6	0
Programming	7	6	0
Dilligaffers	2	12	0
BOX			
* Stockroom 9	11	1	0
Special Systems	9	5	0
Field Circus	8	4	0
S.D.C.	5	8	0
MV			
Maintenance	8	4	0
Building 5	7	5	0
Wreckage	4	8	0
The Mob	3	8	0

American League

	Won	Lost	Tied
ECLIPSE			
Wellesley	11	4	0
Software	9	4	2
S.I.E.	6	4	2
Marketing	5	6	2
Data Who	6	8	0
Ball Busters	4	8	0
DASHER			
ANTS	8	4	0
NTS	9	6	0
MSE	8	5	2
Field Service	5	8	0
FEMIS	5	8	1
Eclipse Eng	1	11	0

	Won	Lost	Tied
NOVA			
*Insecurity	13	3	0
*WCIF	11	3	1
Public Relations	7	5	1
Cadgers	6	5	0
NOTA	2	11	0
TEMPEST			
Bat Busters	9	3	0
Short Hops	7	5	0
Bones	7	6	0
DS & C BB	5	8	0
* Teams that have clinched playoff berth.			
Dionysus	4	8	0

Note: All team managers should confirm their won/lost records as accurate. Report any discrepancies to Paul Barker at extension 7319 in Southboro.

**Fall Road Race
Scheduled For September 20**

There are only four weeks left before the Dasher Road Races on Friday, September 20. There will be a 10km foot race, a 3-mile foot race, a 15-mile bike race and a biathlon. Helmets will be required for the bike race participants. Entries will not be accepted after Friday, September 13.

Anyone interested in being a marshall should send in an entry to DASHER RACE, Mail Stop E111 in Westboro.

**Road Race
Entry Form**

(Please Print)

Name: _____

Extension: _____

MS: _____ Badge #: _____

Race Categories:

Check

- under 35
- 35 and over
- Male Female
- Bike Race
- 3-Mile Foot Race } Biathlon
- 6.2-Mile foot Race }
- Race Day Volunteer .

T-Shirt Size:

Circle One:

S M L XL

I represent that I am in good physical condition and sufficiently trained to participate in the Dasher Road/Bike Race. I am aware of the risks which are inherent to this activity, and I am participating at my own risk. In consideration of Data General Corporation and the Data General Runners Club accepting this application, I hereby assume any and all risks which may be associated with this activity and hereby waive and release all causes of actions and claims for damages of any nature whatsoever which I may have against Data General Corporation, its employees, directors, officers and agents arising out of or connected with my participation in the activity.

Signature: _____

Date: _____

Return the race form to DASHER RACE, MS E111 in Westboro no later than one week prior to the race date. This race is sponsored by the Activities Committee solely for Data General employees.

(Incomplete Forms Will Be Rejected)

MARKETPLACE

CARPOOL

Existing Carpool, needs riders, Brookline/Brighton area to Webo/Sobo, flex, User x7093.

Existing Carpool, from St. Mary's Chelmsford to Webo needs riders, 8:30-5, John x4174/Ed x6744.

Vanpool, from Boston/Brookline/Newton to Webo, riders & drivers needed, 8:30 - 5, Paul x5223.

LOST AND FOUND

Sleeping Bag, dark blue nylon, found in North Parking Lot on 7/19, Security x6100.

FOR RENT

Apt, Milford, 1 bdrm, 2nd fl, AC, pool, tennis, 1 yr lease, \$550/mo, 623-5685 (Somerville).

Efficiency, Dennisport, 2 bdrm, close to beach, avail Aug 18-25, \$325, Sept 14 - Nov 30, \$200/wk or \$75/wkend, 435-4557 (Hopkinton).

Apt, 5 rms, Marlboro, 1st fl, \$485/mo + util, 485-2134 (Marlboro).

Vacation Home, West Dennis, 2 bdrms, private beach, slps 5, all appliances, Sept/Oct, \$400/wk, 839-9250 (Grafton).

Townhouse, Paul Revere Village, Millbury/Grafton line, 2 bdrm, AC, fireplace, garage, \$700 + 875-2320 (Framingham).

Condo, Acton/Nagog Woods, 2 level, 3 bdrms, 2 1/2 bath, incl washer/dryer, refrig, pool, tennis, \$950/mo, 369-5568 (Concord).

Sailboat, 34 ft Racer/Cruiser, new, fully equipped, avail Aug & Sept, 784-9030 (Sharon).

WANTED

Roommate, to share 2 bdrm condo, 1 1/2 bath, washer/dryer, \$338/mo + 1/2 util, Grafton/Millbury line, 865-5263 (Millbury).

Roommate, to share house, 10 min from DG, washer/dryer, \$350/mo, incl utils, 845-1447 (Shrewsbury).

Roommate, to share 2 bdrm 2 bath apt in Milford, avail 9/1, \$295/mo incl heat & hot water, 12 mo lease, (401) 568-3989 (Chepachet, RI).

Roommate, to share 2 bdrm, 2 bath apt, Framingham/Natick line, \$400/mo + 1/2 util, 875-6724 (Framingham).

Lawnmower, immediately, 853-3827 (Worcester).

Roommate, to share 3 bdrm house on Worc/West Boylston line, \$295/mo + 1/2 util, 853-3827 (Worcester).

Roommate, to share 3 bdr, 1 1/2 bath townhouse, pool, washer/dryer, garden, \$350/mo, incl util, 562-5071 (Hudson).

Candlepin Bowlers, interested in joining a league, Tues nites in Millis, 5:30, Jim x2495.

Roommate, to share 3 bdrm townhouse, laundry, pool, tennis, \$287/mo heat incl, Windsor Ridge, 870-0473 (Westboro).

Roommate, to share new house in Uxbridge, wall-to-wall, dishwasher, etc., \$290 + 1/2 util, 897-6201 (Maynard).

Apt, to rent, in a house, Westboro area, \$400-\$550, 366-5511 (Westboro).

FOR SALE

Upright Freezer, 19 cu ft, 3 yrs old, \$300, 799-7182 (Worcester).

Items, VW parts, tires on rims \$20; AM/FM/cassette, \$15; tie rod \$10; steering column u-joint, \$25, roll-top desk, 12 drawers, sectional for easy movement, \$260, 368-8327 (Clinton).

Condo, Milford near Rte 495, 2 bdrm, 1 1/2 bath, balcony, central AC/heat, tennis indoor pool, sauna, etc., \$86,900, 478-6407 (Milford).

Items, bureau w/cedar wardrobe, \$75; workbench, \$50; sofa w/chair, \$100; Sears console stereo, \$35; B.B.Q. grill, \$35, 966-0156 (Bellingham).

Windows, alum. combination storm windows, all w/screens, BO 792-9063 (Worcester).

Firewood, 3 cords of recently cut hardwood in 4 ft + less lengths, must pick up, \$125, 435-5139 (Hopkinton).

Tires, 2 Dunlop snowtires, mounted on rims sz G78-15, used 1 winter, also 1 small trunk, BO 792-9063 (Worcester).

Clarinet, Selmer Signet 100, wood, w/case, \$200/BO, 755-7871 (Worcester).

Items, Strolee car seat, \$30; stroller, \$15; booster stool, \$5; kitchen table w/3 chairs, \$80; Craftmen lawn mower, \$30, 393-9329 (Northboro).

Items, Raleigh Pro bicycle, reconditioned, \$600; inflatable dingy, Achilles LT-2D w/2.7 HP, cruise & carry motor, 1 mo old, 784-9030 (Sharon).

Television, Sony Trinitron, 1 yr old, Cherrywood console, \$650, 359-6192 (Medfield).

Items, component stereo system, Magnavox 17W receiver, turntable, Dolby cassette, spkrs, glass door cabinet, \$350/BO; apt sized Maytag 110W dryer, \$125/BO; solid maple rocking chair, \$50/BO, 234-9746 (Northbridge).

PVC Pipe, used 1 in white, twenty 20 ft lengths w/couplings, 400 ft total, BO, 478-4129 (Milford).

Items, washer/dryer, electric; refrigerator; dehumidifier and more, 528-6254 (Franklin).

Tires, mud & snow tires, 3.75-16.5, \$100, 529-4427 (Upton).

Items, 10 spd dirt bike, \$100; oak drafting table, \$100; drafting chair, \$75, 876-9862 (Cambridge).

Trailer, '84, 24 ft Starcraft Popup, ref, htr, screen house, king sz bed, 473-5796 (Milford).

Items, swing, \$15; playpen, \$35; Johnny jump-up, \$10, 839-3269 (Grafton).

Items, snowtires, E78R14 for GM cars, \$35; rims for Ford cars, \$5/ea; contemporary black sofa set, sofa, love seat, & chair, \$225, 393-2490 (Northboro).

Furniture, oak armoire, matching nightstand, \$525; cocktail table, cloister finish, \$225, 785-0025 (Dover).

AUTOS

'71 Olds Cutlass, PS/PB, AC, needs work, BO, 839-9567 (S. Grafton).

'75 Pontiac Firebird, auto, 6 cyl, BO, 839-9567 (S. Grafton).

'77 Mustang II, 4 spd, 4 cyl, 77K mi, orig owner, AM/FM, needs brakes, \$1200, 881-5349 (Ashland).

'77 Ford Pinto, 2 dr, sedan, recent tires, battery & brakes, reasonable, 756-3272 (Worcester).

'77 Dodge Aspen, 6 cyl, PS/PB, AC, 47K mi, \$1700, 366-7079 (Westboro).

'77 Caprice, loaded, new tires, 50K mi, \$3300, 366-9693 (Westboro).

'78 Camaro, auto, AC, PS/PB, AM/FM/cassette, orig owner, \$3300/BO, 875-2320 (Framingham).

'78 Olds Cruiser Wagon, 9 passenger, loaded, trailer hitch, luggage rack, 2 new tires, \$2200, 366-9693 (Westboro).

'78 Ford Fairmont, 4 dr, 6 cyl, std, new parts, BO, 481-3661 (Marlboro).

'78 Dodge Omni, 4 dr, 4 cyl, new brakes, BO, 481-3661 (Marlboro).

'78 Buick Regal, V6, AC, auto, AM/FM, 65K mi, \$1800, 393-7162 (Northboro).

'78 Ford Fairmont, 2 dr, PS/PB, AC, 61K mi, \$1500/BO, 393-2490 (Northboro).

'80 Chevy Chevette, 2 dr, 4 spd, 4 cyl, AM/FM, cloth interior, \$2300/BO, 278-5360 (Uxbridge).

'80 Mercury Cougar XR7, 302 ci, loaded, Chapman lock, \$4350/BO, 842-5143 (Shrewsbury).

'80 Toyota Corolla, 5 spd, recently tuned, new front & back shocks, \$3500, 393-8272 (Northboro).

'81 Plymouth Horizon, 4 dr, hatch, 4 spd, AM/FM, fwd, 56K mi, \$2600, 877-3428 (Framingham).

'82 Plymouth Sapporo, sports coupe, low mi, extras, 883-1645 (Blackstone).

'82 Pontiac J2000, auto, AC, AM/FM, cloth bucket seats, rear def, \$3750/BO, 478-7347 (Milford).

'82 Chevette, 11K mi, Rusty Jones, AM/FM, \$3500, 366-9697 (Westboro).

'82 Berlinetta, 23K mi, loaded, \$7500/BO, 481-4063 (Marlboro).

'82 Mercury Marquis, 4 dr, AC, AM/FM, 44K mi, \$6350, 791-8653 (Worcester).

'83 Mazda RX7, AC, cruise, AM/FM/cassette, 23K mi, \$9600, 476-7535 (Manchaug/Sutton).

'83 Chevy Blazer S-10, 4x4, V6, 5 spd, all options, \$9400/BO, 853-4222 (Worcester).

'84 Toyota Tercel, 4 wd, tan, stereo/cassette, clinometer, all highway mi, \$6800/BO, 853-9115 (Worcester).

'85 Honda Prelude, std, 5 spd, AC, AM/FM/cassette, 10K mi, \$12,500/BO, 655-5250 (Natick).