

# Mini News

## News For The Employees of Data General

---

August 9, 1985

### New Period Stock Price Is \$33.75

The opening day price for Data General stock to be purchased through the Employee Stock Purchase Plan is \$33.75 (85 percent of the average market price, \$39.69, on Thursday, August 1). Stock will be purchased at that price or 85 percent of the average market price on January 31, 1986, whichever is lower.

Employees enrolled in the program purchased stock at \$33.75 per share in the period that closed Wednesday, July 31. The average market value on that day was \$39.63. The number of employees who bought shares in the July 31 plan is 4,472. Employees purchased 113,666 shares.

Data General stock certificates will be mailed to participants' homes. Anyone who expects to receive stock but does not have it by August 15, should contact Morgan Guaranty Trust at (212) 587-6447.

### Have You Received Your DID Number?

By now, Westboro employees should have received their new Direct Inward Dialing (DID) telephone number in preparation for the Monday, August 19 kick-off of the new phone service in Westboro.

Information packets describing the new telephone service were distributed via internal mail last week. The packets featured background information, notification post cards and most importantly, your new seven-digit DID phone number. Beginning August 19, use of this number will enable outside callers to contact you directly, without the assistance of a Data General operator.

You can inform your outside contacts about the change by using the specially-prepared post cards distributed in the packets. Additional post cards are available as needed.

Remember, all DID telephone numbers begin with the digits "870". Then, to determine the remaining four digits of your DID number, add the number 3000 to your present phone extension.

If the number you have been assigned does not correspond with your internal phone extension or if you have not yet received a DID information packet, contact your department representative or John Gudgel at extension 6097 in Westboro.

### Data General Hosts Milford Chamber Of Commerce



*Data General welcomed the Milford Chamber of Commerce during a recent Chamber of Commerce Board of Directors meeting held at the Milford facility. During the meeting, board members were given a demonstration of the DATA GENERAL/One portable personal computer system. Participating in the demonstration were: (left to right) Saul Kraft, executive vice president of the Milford Chamber of Commerce; Howard Glassman, manager of the Data General Dealer Support Programs; and Frank Zolli, president of the Milford Chamber of Commerce.*

**Five Year Employees  
Honored  
Inside Today...**

## People

### *In Systems Development...*

**Chris Skatell** has been promoted to section manager of Software Quality Assurance (SQA), reporting to SQA Manager Tom Morgan. Chris had been a project leader in SQA and has been a product support specialist and senior programmer analyst with Data General.

**Elizabeth Rentmeesters** has been named project leader II in SQA also reporting to Tom Morgan. In her new position, Elizabeth is responsible for software quality assurance of CEO Comprehensive Electronic Office and other business automation software developed in Westboro. Elizabeth previously was a senior business planner in the Technical Products Division.

### *In Technical Products...*

**Susan Hazel** has joined Marketing Communications in the Technical Products Division in Denver as an Art director reporting to Mike Klatman, manager of Advertising and Sales Promotion. Susan has a BFA in graphic design from Kent State University.

Sales representatives now have until September 28 to contact all of the OEMs and System Suppliers in their territory and encourage them to utilize Data General's advanced technology - at a 35 percent discount.

Sales reps can plan on selling four more systems in the same family in the next 18 months to those accounts.

Since its introduction in March, this successful program has generated sales of dozens of ECLIPSE MV/Family and DESKTOP GENERATION computer systems.

For more information about the Demo/Development Policy, call the System Supplier Program in Westboro. For questions regarding a NEW account, call Meg Pierce at extension 5044 in Westboro. For others concerning an agreement with an EXISTING account, contact Kathie Fraser at extension 5805 in Westboro.

## Marketing Education Offers New Course

A new course entitled, "Selling Information Management Solutions," is being offered to employees through Marketing Education. Geared to Sales representatives and Systems engineers, the course focuses on assessing customer information management needs and proposing appropriate solutions.

The three-day course is being held Tuesday, August 20 through Thursday, August 22 at Data General-Westboro. Participants are required to have at least one year of field experience with Data General. To register, submit the following information to Lill Glockner at extension 2289 in Woodstock via TWX K171:

- Course Title and Number (ME610)
- Course Date and Location
- Name and Badge Number
- Office Location
- Cost Center Number
- Manager's Name

For more information contact Richard Spool at Woodstock at extension 2270.

### **TPD Employees Meet Rapids**



*The Technical Products Division (TPD), which recently relocated to Denver, has jumped into Colorado activities with a splash. More than 30 TPD employees and their families participated in an 11-mile journey down the Arkansas River. The trip was followed by an outdoor barbecue and socializing in which many resolutions were made to "try even tougher rapids the next time."*

## Data General Extends OEM Demo Development Program

Data General has extended the availability of the recently announced Demo/Development Program, offering the Sales force more time to use this proven tool for increasing sales and commissions from OEM accounts.

*Mini News* is published weekly for the employees of Data General-Westboro. Material may be submitted for publication to Joy Ibrahim, extension 4705, MS A235. Data General - An Equal Opportunity Employer.

## Westboro

### Fire Extinguisher Training Offered

Hands-on fire extinguisher training is being offered to Westboro employees on Wednesday, August 21. One-hour training sessions will run continuously from 9 a.m. to 4 p.m. in the lower North Parking Lot behind Building 14B.

The session will feature a demonstration on the use of fire extinguishers followed by hands-on training in putting out a fire. Participants are asked to bring safety glasses, if they have them, and dress in old clothes.

To sign-up, contact Dolores Braley at extension 6110 or Debbie Lombard at extension 6080 in Westboro before Friday, August 16. Supervisor's approval is required. In the event of rain, classes will be rescheduled for the following week.

### Pizzeria Prices Change

There will be a slight increase in prices at the pizzeria, effective Monday, August 26. This adjustment was made after consideration of associated cost increases. On the average, prices will increase 13 percent.

### Travel Tip

Employees are reminded that changes in business travel plans - during normal business hours- should be made through Corporate Travel and Meeting Services at extension 232-1000 in Westboro.

After hours, changes to reservations should be made through Crimson Travel. Within Massachusetts, dial (617) 354-5060. Outside of Massachusetts, call (800) 343-5880.

## Activities

### Beach Party

Data General employees and their guests will have fun in the sun this Saturday at Steep Hill Beach in Ipswich. The Beach Party will feature volleyball, limbo contests, ocean swimming and a steel band along with a raw clam and oyster bar and much more!

Important Beach Regulations to Remember:

- You may NOT bring alcoholic beverages (a cash

beer and wine bar will be available.)

- Alcoholic beverages must remain in the picnic grove area and may not be consumed on the beach.
- Flotation devices are prohibited.
- Pets are not allowed.

### Directions From Westboro

Take Mass Pike East to Route 128 North. Take Exit 20N and follow Route 1A north to Ipswich (approximately 8 miles). Then, turn right and follow the signs to Castle Hill and Cranes Beach.

### Red Sox Outing

If the Red Sox game on Saturday, August 24 is CANCELLED due to the players' strike, employees who have requested tickets will be able to exchange them for tickets to another outing or a refund. If the game is rescheduled, employees will receive tickets for the new game.

### Race Car Fans

Tickets are available for the Sports Car Club of America Playboy U.S. Endurance Cup Race to be held Saturday, August 31 at Lime Rock Park in Lakeville, Conn.

The race will include a Toyota MR2, whose crew will be using a DATA GENERAL/One personal portable computer in the pit to track the car's progress. The racing auto sports the DATA GENERAL/One logo.

Gates open at 7:30 a.m. and the race begins at 12 noon. Discount advance tickets, which include a pass to the paddock area where autos are stored, are \$15. To order, send a self-addressed, stamped envelope and a personal check made payable to Data General Activities Committee to T.Teller, Mail Stop C117 in Westboro. The park is located on Route 112 in northwestern Connecticut, easily accessible from the Massachusetts Turnpike.

### All Star Extravaganza

- Can the Executive team keep their crown in 1985?
- Is the National League Invitational team capable of unseating Data General-Milford?
- Will the ECLIPSE/Dasher Division overpower the Nova/Tempest Division?
- Which side will walk away with the National League title?

*continued on page 6*

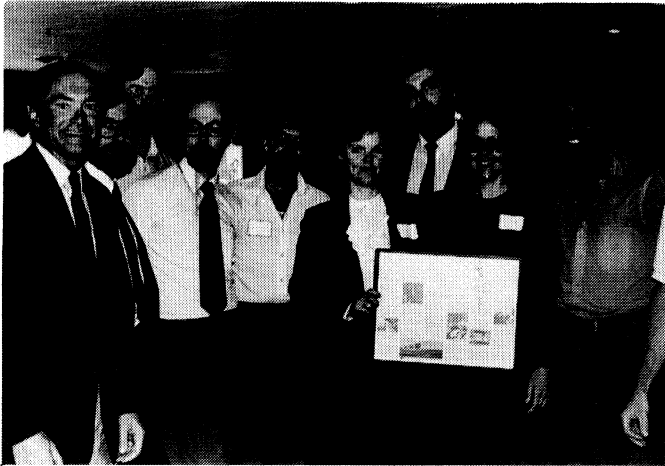
# Employees Honored For Five Years Of Service

Employees from Westboro and local field offices were honored for their five years of service with Data General during a luncheon held at L'izabets's restaurant in Westboro last week.

Data General President Ed de Castro congratulated the group on attaining the five year milestone thanking them for their contributions in making the company a billion dollar success.

The five year veterans received commemorative teak trays highlighting Data General news events and milestones from June 1979 to May 1980 when the group joined the company.

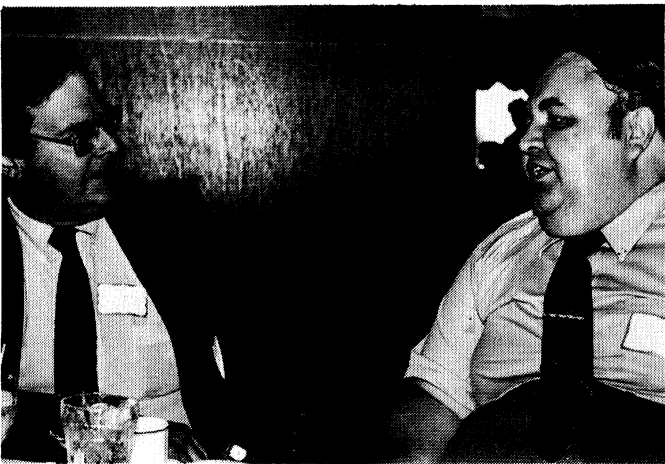
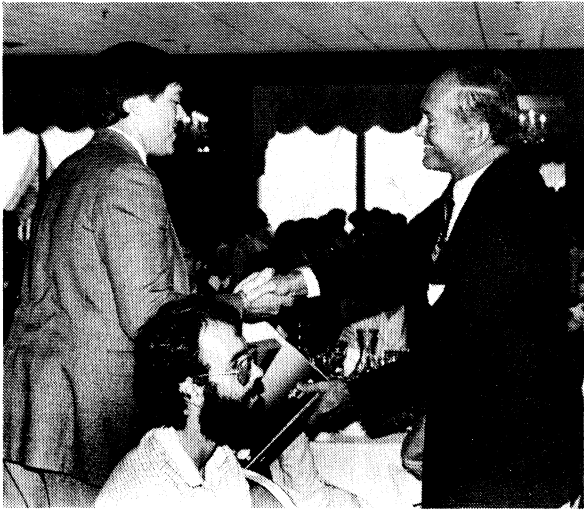
Scenes from the five-year event appear below.



5 Years



5 Years



5 Years

continued from page 3

Catch all the action on Thursday, August 22 at 4:45 p.m. at the Knights Of Columbus field on Route 135 in Ashland, when Data General's Softball League will be holding its 1985 All-Star Games.

Be sure not to miss this exciting event. Employees and their guests are welcome to attend and cheer on their favorite team.

**Fall Dasher Race  
Set for September 20**

Get ready... set...go... Data General's Dasher races for the fall season will take place Friday, September 20.

The traditional format has been planned - a 3-mile and a 10K foot race; a 15-mile bicycle race; and a biathlon, combining the 15-mile bicycle race and the 3-mile foot race.

Watch for registration details in upcoming issues of *Mini News*.

Volunteers are needed for planning and race day positions. If you would like to help out, contact the Dasher Race Committee at Westboro Mail Stop E111.

The Dasher races are sponsored by the Data General Activities Committee solely for Data General employees.

**Data General Softball  
League Standings**

Following are Data General Softball League standings as of June 6:

**National League**

	Won	Lost	Tied
<b>BOOK</b>			
Engineering	8	2	0
Renaissance	8	3	0
Nuked	6	4	0
Programming	5	4	0
Dilligaffers	2	8	0
<b>BOX</b>			
Stockroom 9	9	1	0
Special Systems	7	4	0
Field Circus	5	3	0
S.D.C.	3	6	0
<b>MV</b>			
Maintenance	7	2	0
Building 5	7	4	0
Wreckage	3	6	0
The Mob	1	7	0

**American League**

	Won	Lost	Tied
<b>ECLIPSE</b>			
Wellesley	9	3	0
Software	7	3	1
S.I.E.	6	3	1
Marketing	5	4	2
Data Who	3	7	0
Ball Busters	3	7	0
<b>DASHER</b>			
ANTS	6	3	0
FEMIS	5	4	0
MSE	6	5	0
NTS	6	6	0
Field Service	3	6	0
Eclipse Eng	1	9	0
<b>NOVA</b>			
Insecurity	10	2	0
WCIF	7	3	1
Public Relations	6	3	1
Cadgers	6	3	0
NOTA	2	8	0
<b>TEMPEST</b>			
Dionysus	6	2	0
Bat Busters	6	3	0
Short Hops	5	4	0
T-Bones	4	5	0
DS & C BB	4	5	0

**Note:** All team managers should confirm their won/lost records as accurate. Report any discrepancies to Paul Barker at extension 7319 in Southboro.

**MENU**

**Pizzeria**, phone orders 10 a.m. - 2 p.m., call extension 4376.

**Westboro**, Monday, Knockworst/Sauerkraut/Crossaint Sandwich; Tuesday, Roast Beef Special/Quiche; Wednesday, Egg Plant Parmesan/Seafood Roll; Thursday, Roast Turkey w/ stuffing/Sausage Sub; Friday, Clam Plate/Fish & Cheese Sandwich.

**Milford**, Monday, Italian Special; Tuesday, Baked Meatloaf Wednesday, Stuff a Spud; Thursday, Pizza; Friday, Fried Fish.

**Southboro**, Monday, Veal Parmesan; Tuesday, Baked Fish; Wednesday, Macaroni & Cheese; Thursday, Quiche; Friday, Fried Clams.

# MARKETPLACE

## CARPOOL

**Carpool**, existing carpool departing from St. Mary's, Chelmsford to Webo has openings, hrs 8:30 a.m. - 5 p.m., John 174/Ed x6744.

**Existing Carpool**, needs additional riders, Brookline/Brighton area to Webo/Sobo, flex, User x7093 (Sobo).

## LOST & FOUND

**Bike**, 12 spd Columbia, men's, black, found outside 14B dock, Security x6100.

## FREE

**Dog**, mixed breed, spayed, 4 yrs old, 853-9267 (Worcester).

**Oil Tank**, 275 gallon, you remove it, 839-3033 (N. Grafton).

**Rabbit**, French-lop, all black male, 6 mos, incl all accessories, 791-6112 (Auburn).

## FOR RENT

**House**, Moody Beach, Wells, ME, 3 bdrms, central heating, 2 decks, all electric house, some Aug wks avail, \$600/wk, Sept/Oct, \$300/wk, 366-0377 (Westboro).

**Apt**, So. Grafton, 4 rm apt, avail Sept 1, partial util, garage, \$450/mo, 839-9192 (Grafton).

**House**, Killington, VT, 3 bdrm, near lakes, golf & tennis, modern, day/wkend/wk, 653-1029 (Natick).

**Townhouse**, Newton, 3 bdrm, 1 1/2 bath, fireplace, washer/dryer, \$1200/mo + util, 782-3420 (Brighton).

**House**, Merrimack, NH, 2 bdrm, 1 1/2 bath, loft w/skylights, appliances, \$700/mo + util, 655-8687 (Natick).

## WANTED

**Roommate**, to share 2 bdrm, 2 bath apt in Windsor Hgts, avail 9/1, \$335/mo heat & hot water incl, Herb x6682.

**Roommate**, to share house, all wall-to-wall, dishwasher, \$300/mo + 1/2 util, 897-6210 (Maynard).

**Roommate**, to share 3 bdrm home in Waltham, 30 min to DG, \$200/mo + 1/3 utils, avail 9/1, 893-1008 (Waltham).

**Roommate**, to share spacious apt in 2-family house, Newton, avail 9/1, \$260 + utils, 965-0672 (Newton).

**Roommate**, to share 2 bdrm apt, wall-to-wall, pool & tennis, avail Sept, \$280/mo + 1/2 elec, 875-7463 (Framingham).

**Roommate**, to share house, 10 min from D.G., \$350/mo, incl utils, washer/dryer, 845-1447 (Shrewsbury).

**Roommate**, to share 2 bdrm, 2 bath apt in Natick, Sept 1, \$330/mo + 1/2 heat & util, 6 or 12 mo lease, furnished except bdrm, 655-9894 (Natick).

## FOR SALE

**Red**, twin, complete, 2 sets, \$40/set, 5-9608 (Hopkinton).

**House**, Milford, cape, porch, playroom, landscaped, 4 bdrms, 473-6091 (Milford).

**Snowtires**, Michelin, 2, white wall, 175-14 radial, \$100, 881-4437 (Ashland).

**Woodstove**, Garrison II, fits in fireplace, \$150, 278-6536 (Uxbridge).

**Lawnmower**, 25 in reel type, needs carburetor work, \$15/BO, 456-8590 (Harvard).

**Guitars & Amps**, '65 Martin F-65 electric, Ibanez Les Paul Copy, brand new Fender Bullet Bass, custom III lead brain w/a fender 4-12 in sprk cabinet, brand new Yamaha bass amp, BO, (603) 668-7015 (Manchester, NH).

**Water Bed**, king size, \$150, 393-2430 (Northboro).

**Bunk Bed**, w/oak frame, converts to trundle bed, \$100/BO, 842-1352 (Shrewsbury).

**Storage Space**, cars, boats, tent trailers, furniture, etc, \$30/mo, 234-3103 (Whitinsville).

**Bicycle**, 1 mo old, must sell, \$80, 875-5390 (Southboro).

**Air Conditioner**, 6,000 BTU, hardly used, \$100, 533-7898 (Medway).

**Items**, 3 piece blue suitcases, \$50; 19 in black & white TV, \$30; twin bed, \$30; 2 girls dresser drawers, \$500/BO for all, 842-4616 (Shrewsbury).

**Tires**, mounted on alum mag wheels, \$300, 568-7372 (Harrisville, RI).

**Electric Piano**, Korg EPS-1 touch sensitive, has strings, stand, case, \$850; Yamaha bass amp, 100 watts, built in equalizer, \$175, (401) 568-0906 (Pascoag, RI).

**Camper**, slide-in, w/stove, refrig, sink, full bath, heater & AC, \$2300/BO, 529-7550 (Upton).

**\$50 Gift Certificate**, for South Shore Music Circus, good for any 1985 season event, \$40, 393-3142 (Northboro).

**Bedroom Set**, solid cherry, king size, BO, 443-3652 (Sudbury).

**Freezer**, upright, door storage, \$125/BO, 839-3033 (N. Grafton).

**Tent Trailer**, slps 4, lg storage cabinet, 2 spare tires, needs new canvas, \$250/BO, 839-3033 (N. Grafton).

## AUTOS

**'71 Volvo Wagon**, yellow, restored body, new tires & brakes, motor needs work, \$1500, 853-9115 (Worcester).

**'73 Plymouth Satellite**, \$550, 435-6777 (Hopkinton).

**'73 Ford Mustang**, convertible, rebuilt 302 V8, trans, new paint, tires, \$3200/BO, 529-4068 (Upton).

**'76 Olds Starfire**, auto, PS/PB, AM/FM, \$700, 965-0672 (Newton).

**'76 Chevy Monza**, 68K mi, AM/FM/cassette, \$700, 368-0398 (Clinton).

**'76 Olds Starfire**, auto, PS/PB, AM/FM, 965-0672 (Newton).

**'76 LTD Wagon**, recent engine, \$1500/BO, 829-3136 (Holden).

**'77 Buick Skyhawk**, \$1000/BO, 791-6657 (Worcester).

**'77 Honda**, hatch, '79 engine 55K mi, \$1250/BO, 456-8590 (Harvard).

**'77 Ford E150 Van**, PS/PB, V8, 3 spd, needs body work, \$1200, 568-7372 (Harrisville, RI).

**'78 Camaro**, 305, 70K mi, AC, AM/FM/tape deck, \$3500/BO, 875-2320 (Framingham).

**'78 Honda CB400T Hawk**, \$400, 234-6744 (Whitinsville).

**'78 400CC Honda Hawk**, 3700 mi, 2 helmets, \$1000, 872-5107 (Framingham).

**'78 Chevy Impala**, 4 dr, AM/FM/cassette, \$2200, 875-0486 (Framingham).

**'78 Granada ESS**, PS/PB, AM/FM, auto 2 dr, 80K mi, 6 cyl, \$1500, 872-5516 (Framingham).

**'79 Subaru**, 4 spd, 44K mi, AM/FM, \$2000, 562-6720 (Hudson).

**'79 Mercury Cougar XR7**, 65K mi, \$2500/BO, 753-8804 (Worcester).

**'79 Plymouth Horizon**, fwd, 4 dr, hatch, 4 spd, dark green, \$2000, 872-1890 (Framingham).

**'79 Monte Carlo**, 6 cyl, PS/PB, new radiator, battery, 92K mi, \$1750/BO, 485-0236 (Marlboro).

**'80 Chevy Citation**, silver, AC, PS/PB, auto, 65K mi, \$2300/BO, 263-7292 (Acton).

**'80 Subaru Brat 4X4**, 67K mi, \$3000/BO, 653-6254 (Natick).

**'80 Mercury Cougar XR7**, 302 ci, loaded, \$4450/BO, 842-5143 (Shrewsbury).

**'82 Mercury Lynx**, 4 spd, 98K mi, AM/FM/cassette, AC, \$2600/BO, 756-2718 (Worcester).

**'83 Honda CB1000 Custom**, \$2500/BO, 966-2289 (Bellingham).

**'83 Mazda RX7**, AC, cruise, AM/FM/cassette, 23K mi, \$9600, 476-7535 (Manchaug/Sutton).

**'83 Yamaha Seca 750**, silver w/sport fairing, cover incl, 5K mi, \$2000, 485-0236 (Marlboro).

**'83 Plymouth Horizon**, less than 8K mi, PS/PB, auto, tinted glass, \$3900/BO, 865-3031 (Millbury).

**'83 Pontiac J2000 Sunbird**, coupe, 5 spd, AM/FM, snrf, cloth seats, \$6000/BO, 366-8426 (Westboro).

**'84 Honda Prelude**, 23K mi, AC, rustproof, snrf, AM/FM/cassette, \$10,500, 435-9608 (Hopkinton).

**'84 Saab Turbo**, 3 dr, walnut, garage kept, \$13,900/BO, 235-5668 (Wellesley).

**'84 Pontiac Fiero**, 4 spd, stored winters, extras, \$9750/BO, 473-8504 (Hopedale).

**'84 Toyota Tercel**, 4 wd, tan, stereo/cassette, clinometer, all highway mi, \$6800/BO, 853-9115 (Worcester).

**'85 Oldsmobile Calais**, AC, auto, AM/FM, PS/PB, 4K mi, extras, \$10,200/BO, 528-6933 (Franklin).

**'85 Pontiac Grand Prix**, 7,500 mi, V6, loaded, auto, black w/gold, \$10,500/BO, 473-1878 (Hopedale).



# DATA GENERAL ANNOUNCES A MAJOR BREAKTHROUGH IN SPARE PARTS EXCHANGE AND REPAIR.



## INTRODUCING SPARE MAIL!

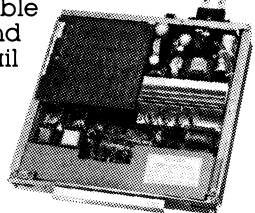
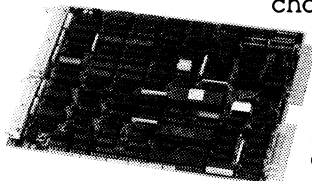
Data General's innovative new parts exchange and repair service features top Data General quality, an unparalleled selection of parts, and turnaround that responds to your particular service needs. Simply stated, Spare Mail service just might be the very best parts exchange and repair service in the industry.

**Great Turnaround.** Spare Mail service offers you a choice of turnaround options.

Five-day turnaround is standard, with emergency overnight delivery and three-week economy service available as well. And Spare Mail

service offers you the flexibility of selecting the option that's most appropriate for whatever your situation might require.

**All the Parts You Need.** Spare Mail is your one-stop source for mail-in exchanges and repairs of 1,500 Data General parts such as circuit boards, disk heads, keyboards, data modules and many other key electrical and electromechanical assemblies that make up your Data General computer



system. You benefit from the world's largest inventory of Data General parts.

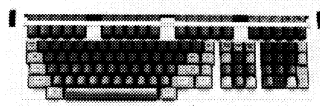
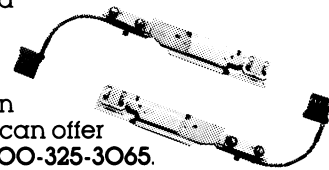
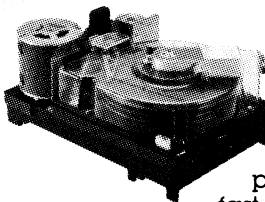
**Guaranteed Reliability.** And, Spare Mail service offers automatic installation of the latest Engineering Change Orders (ECOs) at no extra charge, assuring you of up-to-date performance and reliability.

All exchanges and repairs are warranted for 90 days. Plus, Spare Mail pays for shipping from Data General to you. It's fast... it's easy... and it's designed to

meet your specific time and budget requirements.

If you'd like to sign up for Spare Mail service or if you'd like more information about the many benefits it can offer you, simply call toll-free 1-800-325-3065. (In Massachusetts call 1-800-952-4300.)

And remember, when you need your parts fixed fast and fixed right, Spare Mail service is the only answer.



**Data General**  
Field Engineering

A Generation Ahead In Customer Support.