

# Mini News

## News For The Employees of Data General

---

February 1, 1985

### **A Year Of Progress, A Cautious Outlook**

Data General President Ed de Castro called 1984 a year of "progress" but expressed "cautious" optimism for the year ahead during his address at the company's Annual Meeting of Shareholders held Wednesday morning.

During the meeting at the State Street Bank in Boston, Ed said that 1984 was a "year of progress, and one that management, employees and shareholders can look back on with some satisfaction. The progress we made, however, was the result of long-term investments we made in earlier years that just began to bear fruit. The 40 percent revenue growth and doubling of earnings in 1984 are directly related to the product development, marketing and sales, service and support investments made long before 1984 began."

Ed then went on to state that the company still retains important goals for itself. "Much more must be done to bring Data General up to our longer range goals, and investments are being made now that will not show results for several years to come."

While 1984 was a year of progress for Data General, Ed stressed that he is more "cautious about the year ahead than a year ago. According to the newspapers and the financial markets, the pause in the economy has suddenly disappeared. Looking at Data General orders and talking to our customers and sales people, we could not have validated either a pause or its disappearance." Ed went on to add that "We do not expect our revenues to grow at the 40 percent pace they did in 1984 but at something short of that rate this year."

Ed attributed his cautious outlook to increased competition and international revenues. "We expect that on the one hand, competition may become more intense as the year goes on, but on the other hand that there may be less competitors," stated Ed. "Competition for Data General comes increasingly from firms considerably larger than we are, and less from smaller firms. This is probably healthy in the long term for the market and for shareholders.

Competition among eight or 10 large stable competitors is likely to serve the needs of customers and investors better than the often chaotic scramble for business among dozens of unstable competitors. And this will tend to stabilize prices and ultimately margins of the larger firms."

Ed added that international business, which accounted for about one-third of the the company's business last year, will play a large part in the company's 1985 performance. "International business continues to be strong. Were the dollar to weaken, and I leave that up to you to forecast what it will do, our competitive position in foreign markets would improve as well as our earnings. In the meantime, we hedge forward in local currencies in order to neutralize the effects of changes in exchange rates on our assets."

Noting that operating margins doubled in the past year to 8.8 percent of revenues, Ed stated that "We hope to improve our gross margin further during the year as a result of our investments in automation and increased volume of shipments. If we can hold our other expenses generally in line with current ratios, our operating margin should show further improvement for the year."

### ***Proxy Amendments Passed***

Data General shareholders passed four proposals which were up for vote at this year's Annual Meeting of Shareholders, including the Fair Price Amendment which protects the interests of all stockholders by giving them greater assurance of equal treatment in the event of an attempted takeover of the company.

During the meeting Ed told attendees that "We are gratified that the stockholders have approved the Fair Price provision, approved the authorization of stock options for employees and re-elected the board of directors.

After tallying up the proxy votes, stockholders approved:

- An amendment to the Employee Incentive Stock Option Plan which increases the number of shares to three million from two million;
- An amendment to the Restricted Stock Option Plan

which increases the number of shares to seven million from five and a half million.

They also elected five directors: Ed de Castro, Herb Richman, Fred Adler, Allan Gordon and John Rubin.

"The Fair Price provision is essential, in my opinion," stated Ed, "to the long-term best interests of shareholders and management. For shareholders, it assures them a fair and single price for their stock in case of a tender offer. As many of you know, two-tier takeovers have occurred with increasing frequency in the past few years. The purpose of two-tier tender offers is to acquire a firm for less than current market value. While some shareholders win in these cases, most of them lose. The Fair Price provision prevents this from happening.

"The Fair Price provision also is essential for sound long-range management. Without it, management time and attention is diverted from the fundamentals of running the company to looking over their shoulders...

"...The Fair Price provision will give us added confidence to make decisions for the long-range future of the company rather than with an eye primarily on the next quarter."

Ed also stressed the importance of employee stock option plans, calling it an "important step" in motivating employees to focus on the long-term future of the company. "Employee ownership in the company has been a traditional Data General method of compensation and motivation. It has been especially valuable as a way of attracting and motivating our senior officers."

**Design An Activities Logo**  
(See Activities)

## Employee Stock Purchased At \$38.75

The current period in the Data General Employee Stock Purchase Plan ended Thursday, January 31. Stock for participants was purchased that day at \$38.75 per share (85 percent of the average market price on August 1, 1984.

Data General stock certificates will be mailed to participants' homes. Anyone who expects to receive stock but does not by February 15, should call Sue Singer at extension 5683 in Westboro.

The opening day price for the next six-month Data General Stock Purchase Plan period will be determined today, Friday, February 1 and will be reported

in next Friday's *Mini News*.

Employees participating in the plan will purchase stock at 85 percent of the average market value price on the opening day or closing day (July 31, 1985) whichever is lower.

### *For Income Tax Purposes*

## Prior Plan Stock Prices

Now that income tax filing time is here, employees enrolled in the Data General Stock Purchase Plan may consider the following.

For those who have sold Purchase Plan shares that were held less than two years for purposes of the Plan, the difference between the purchase price and the fair market value on purchase date is ordinary income to be included with salaries and wages on your income tax return. The difference between the fair market value (FMV) on purchase date and your sale price is either a short or long-term capital gain or loss to be reported on Schedule D, Capital Gains and Losses, and attached to your income tax return. The holding period, for purposes of the Plan, is two years from the date of grant which is the first day of the Plan (either February 1 or August 1).

### *Shares Held Longer Than Two Years*

If the shares were held longer than two years, your ordinary income is the LESSER of:

- the excess of the FMV on sale date over the amount paid for such shares, or
- an amount equal to 15 percent of the FMV of the shares on the first day of the payment period. Any long-term gain would be reported on Schedule D as noted above.

The following information is provided for the prior five years of the Purchase Plan to help with the filing of income tax returns for those employees who may have sold shares in 1984. Also note that for purchases prior to June 22, 1984, the long-term holding period is one year; for purchases after June 22, 1984, the long-term holding period is six months.

Purchase Plan Date	Purchase Price	Avg FMV On Purchase Date
1/31/80*	27.38	32.17
7/31/80*	26.88	39.65
1/31/81*	21.88	25.50
7/31/81*	21.25	27.57
1/30/82*	22.75	26.66
7/30/82*	10.50	12.35
1/31/83*	10.63	23.72
7/29/83*	20.13	33.22
1/31/84	28.25	42.00
7/31/84	35.25	44.19

\*Prices reflect stock split of 11/18/83.

# Helicopter Service To Start Monday

Starting Monday, February, 4, Data General will begin providing helicopter service to carry employees between New England Manufacturing sites.

The company has purchased a six-passenger helicopter which will carry employees between Southboro, Portsmouth and Westbrook. According to Planning and Administration Manager Ron Suffers, the helicopter program will "facilitate communications" among New England employees. "It will be a tool to strengthen effectiveness by reducing the travel time among New England Manufacturing plants and other locations."

Pending authority to land on a regular basis at Westboro Building 14A, the helistop at Southboro will be used for both Westboro and Southboro employees. Westboro employees are encouraged to park their cars in Southboro or to use the shuttle service, which will make stops at the helistop during scheduled helicopter departure and arrival times.

The Southboro helistop is located in the parking area on the north (Route 9) side of Building 5, across the street from Building 4's main entrance. Helistops are located in the parking lots across from main entrances at Westbrook and Portsmouth.

In addition to Data General's Manufacturing sites, the helicopter will be available on a limited basis for special flights to Woodstock, Logan Airport, New York City and other points in New England. Such flights must be scheduled with Corporate Travel.

## How To Reserve A Seat

Data General helicopter service is open to all employees who have business to conduct within the New England Manufacturing plants. **Reservations for flights must be made with Corporate Travel in Westboro at 232-1000** (this call can be made directly from Data General telephones, without having to dial the tie line or access codes). They will be taken on a first-come, first-serve basis, with employee cost centers charged for the flight. Cost centers will be charged for no-shows who fail to cancel within two hours for Southboro-Portsmouth flights and three hours for Southboro-Westbrook trips.

According to Ron, "Flights will depart precisely on schedule, unless delayed by weather. Passengers should be at the helistop five minutes before take-off for loading and a safety briefing."

Employees will be notified of any cancelled flights at least one-hour before take-off. "Early morning scheduled passengers will be asked to provide their home telephone numbers when making a reservation so that they may be called if their flight is cancelled," says Ron. Outside of normal working hours, employees can inquire about flight schedules by contacting Southboro Security at (617) 480-7000, extensions 7059 or 7052.

In addition to employees, the helicopter can be used to transport mail and other critical parts between sites. Whenever material is needed to be shipped via the helicopter arrangements can be made by contacting Corporate Travel.

## John Anderson Named Pilot

John Anderson has joined Data General as its chief helicopter pilot. He comes to the company from Stead Aviation where he was general manager. Prior to that, he was corporate aviation manager at Digital where he was responsible for developing that company's air fleet.

John believes safety and service will be the key to the success of the program. "The helicopter will not run under unsafe weather conditions," he states. "Prior to each flight, passengers will be informed of the vehicle's operating procedures and all safety issues."

## Schedule

Flights will be conducted Mondays through Fridays at the following times:

### Southboro-Portsmouth

Depart	Arrive
7:30 am	8:03 am
3:10 pm	3:43 pm

### Portsmouth-Southboro

Depart	Arrive
10:00 am	10:33 am
5:25 pm	5:58 pm

### Southboro-Westbrook

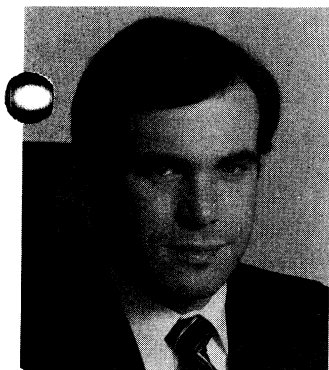
Depart	Arrive
7:30 am	8:33 am
3:10 pm	4:13 pm

### Westbrook-Southboro

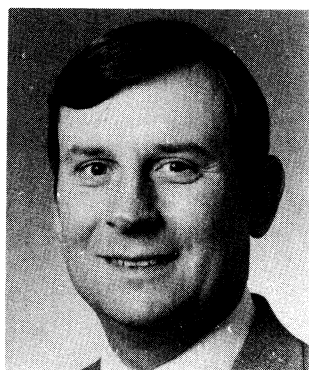
Depart	Arrive
9:30 am	10:33 am
4:55 pm	5:58 pm

This schedule is subject to change.

## Two FE Directors Named



Steve Cappelli



Paul Bielski

**Paul Bielski** has been named director of Field Engineering Product Management, succeeding **Steve Cappelli**, new director of International Support Services/Policies and Procedures. Paul reports to Vice President of Engineering Services Fred Cochrane.

Paul was most recently manager of Advanced Service Technology and prior to that was with North American Systems Engineering for eight years.

He holds a master's degree from Boston University and a bachelor's degree from the University of Maryland.

With Data General for almost five years, Steve reports to Tony Nicoletti, vice president of Support Services. Steve has held several management positions within North American Field Engineering.

Steve earned an MBA from Keller Graduate School in Chicago and a BS from Bucknell University.

## Staff Director For Manufacturing Named

**Vahram Erdekian** has joined Data General as staff director for Manufacturing, reporting to Senior Vice President Dave Chapman. In this new position, Vahram will assist in the development and implementation of Data General's Manufacturing Technology Strategy.

Vahram has been vice president of operations for Pixel Computer in Wilmington, Massachusetts and vice president of manufacturing operations for Franklin Computer Corporation in Cherry Hill, New Jersey. Prior to these positions, he was with Digital Equipment Corporation for 10 years, first as a design engineer, then as a manufacturing engineering manager, new products manager, process engineering manager and personal computer manufacturing operations manager, primarily in the Terminals Manufacturing Group at Maynard and Phoenix.

Vahram received his bachelor's and master's degrees in engineering from Dartmouth College and an MBA from Babson College.

## ECLIPSE MV/10000 Performance Enhanced

Data General has increased the performance of its high-end 32-bit computer by about 30 percent in scientific applications. The new ECLIPSE MV/10000 SX computer uses state-of-the-art Emitter Coupled Logic (ECL) components and an enhanced system design to enable the system to process 3.6 million instructions per second (MIPS).

The ECLIPSE MV/10000 SX system, geared toward computer-aided design, simulation, image and signal processing applications, is the first computer to use commercially ECL 2800 gate array components. ECL is an advanced logic design that results in very high processing speeds. The ECL components are used in a coprocessor system. With the coprocessor, the system can perform calculations on two instructions simultaneously in computationally-intense applications.

Prices for the new system start at \$223,000 for the processor, 4MB of memory and system software. First shipments are scheduled for 90 days after receipt of order. Installed ECLIPSE MV/10000 systems can be upgraded to the new model at the user's site and costs \$55,900. First upgrades are available 120 days after receipt of order.

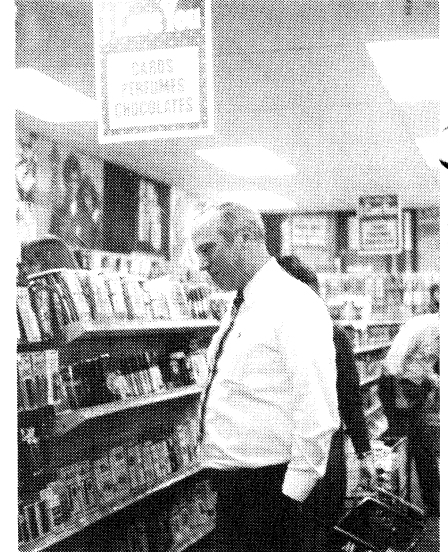
Data General also introduced new memory boards that double the maximum memory for the ECLIPSE MV/10000 models to 32MB and new software enhancements.

The new 4MB and 8MB memory boards use 256KB Random Access Memory (RAM) parts to permit greater capacity on a single 15- by 15-inch printed circuit board. The higher main memory allows the system to execute larger programs at greater speeds. Prices are \$20,000 for the 4MB boards and \$40,000 for the 8MB board.

The new software enhancements for the 32-bit ECLIPSE MV/Family include:

- The Decimal Instruction Set which improves the execution of applications written in COBOL;
- A Global Optimizer which speeds the execution of applications written in C, BASIC, PASCAL, PL/I, COBOL and FORTRAN 77; and
- A new release of DG/SQL, Data General's relational database management system.

*Mini News* is published weekly for the employees of Data General-Westboro. Material may be submitted for publication to Joan Simoneau, extension 4711, MS A235. Data General - An Equal Opportunity Employer.



Hundreds of Data General employees visited the new CVS store during lunch time on opening day last Monday. Among those checking out available items in the store, which is located across from the main cafeteria in Building 14A, are (left) Jim Shaw and (right) Dave Beaber. The store is open daily, Monday through Friday, from 7:30 a.m. to 6 p.m. Employees are invited to shop before or after work and during breaks and lunch.

## Customer Documentation Conference Feb. 4

More than 100 Data General employees will attend a Customer Documentation conference February 4 and 5 at Data General-Woodstock. A production workshop is one of the highlights of Tuesday's meeting, with representatives from various Data General sites describing production processes. The corporate image, Sales support, and a Manufacturing presentation are also on the agenda.

## Westboro

### **A Little Courtesy... Small Car Owners Asked To Park Within Green Lines**

Parking spaces at Westboro are color coded to allow maximum parking - green lined areas are for compact and sub-compact cars and white lined areas are for full-sized cars, vans and small trucks.

In order to insure proper spacing of cars, Security asks that small car owners park in green spaces only.

## Scrap Wood Available

Looking for kindling for your wood burning stove? Throughout the year, scrap pallets are piled up outside the docks at Westboro Buildings A and B. Employees wishing to take them home to burn may contact Dave Fleming at extension 6131 in Westboro or drive right up and help yourself.

## Milford

### **In FE Technical Publications...**

**Bob Bailey** joins Field Engineering Technical Publications as supervisor of I/O Communications, reporting to Bill Hoermann, Technical Writing manager.

Before Data General Bill was with LTX Corporation in Westwood where he served as manager of technical publications for two years. Prior to LTX he was a technical writer at Eaton/Nova Implantation Systems and at Varian/Extrion Division.

Bob earned a BS from Eastern Nazarene College, Quincy.

### **In Customer Services...**

DG/DIRECT, business unit of the Customer Services Division, welcomes **Trish Gibbons**, marketing specialist for upgrades and add-ons. She reports to John Howard, Product Line manager for DG/DIRECT Marketing.

With Data General since June 1983, Trish was most recently a Sales administrator at Westboro.

Trish earned a BA from Holy Cross College.

## Hardware, Software Courses Offered To Employees

Educational Services is offering the following hardware and software courses to Data General employees. All courses are held at 2400 Computer Drive. In order to register for a course, an employee must have his/her supervisor's prior approval.

For course enrollment or information call Central Registration and Information at extensions 4079 or 4096 in Westboro.

Scheduled courses include:

Start Date	Course #	Course Title
2/11	H100	Data General Computer Architecture
	H321	ECLIPSE S140/NOVA 4 S/X Component Level
	H402	Advanced Maintenance Technology using RDOS
	OA141	Getting Started with CEO Word Processing
	S200	RDOS User
	S209	AOS and AOS/VS User
	S306	INFOS II Utilization and Design
	S406	INFOS II Database Design
2/12	S219/VS	AOS/VS System Manager
2/13	OA142	Advanced CEO Word Processing Topics
	OA143	Introduction to CEO Mail and Calendar
2/14	OA143	Introduction to CEO Mail and Calendar
2/15	OA147	CEO List Processing
2/18	OA150	CEO Rev. 2.0 Enhancements
	S102	NOVA Assembly Language Programming
	SM150	Advanced Ada Program Design and ADE Topics
2/25	H100	Data General Computer Architecture
	S209	AOS and AOS/VS User
	S222	Managing CEO (Non-Technical)
2/26	S219/VS	AOS/VS System Manager

You may pick up HMO descriptive brochures and enrollment cards at the meetings or from your Personnel representatives.

Interested employees are invited to attend informational meetings. Meetings will be held in the cafeterias at the locations, dates and times listed below. Prior manager's approval is necessary.

Southboro	Tuesday	2/12	9 a.m.	Bldg. 4
			10 a.m.	Bldg. 5
	Wednesday	2/13	3 p.m.	Bldg. 4
Milford			4 p.m.	Bldg. 5
	Thursday	2/14	10 a.m.	
			3 p.m.	
Westboro	Friday	2/15	10 a.m.	
			3 p.m.	
	Tuesday	2/19	10 a.m.	
	Wednesday	2/20	2 p.m.	
	Thursday	2/21	10 a.m.	
	Friday	2/22	2 p.m.	
	Tuesday	2/26	10 a.m.	

## Activities

**Don't Forget...**

**Feb. 23 Is Data General Day At The Computer Museum**

FEBRUARY						
					1	2
3	4	5	6	7	8	9
10	11	12	13	14	15	16
17	18	19	20	21	22	23
24	25	26	27	28		

## Benefits

### Open Enrollment Meetings

Data General Benefits administrators and HMO (Health Maintenance Organization) representatives will be available to answer medical Open Enrollment questions at employee meetings to be held during February.

HMOs being offered in the area this year include Matthew Thornton Health Plan, Tufts Associated Health Plan, Healthway Medical Plan, Inc., MultiGroup Health Plan, Harvard Community Health Plan, Rhode Island Group Health Association, Fallon Community Health Plan and Medical East.

### Searching For Permanent Activities Committee Logo

The Data General Employee Activities Committee is conducting a company-wide search for a permanent logo which depicts the spirit of the committee people helping people. This logo will be incorporated into all promotional material issued by the committee.

Everyone is encouraged to participate. Submit as many entries as you wish, but be certain each entry is on an official entry form which will be available in literature racks in all Data General facilities Wednesday.

Here are the rules:

- Entries must be submitted in black and white.
- The Data General logo or any facsimile CANNOT be a part of your design.

- All entries must be the original work of the contestant.
- Camera ready art work cannot be submitted.
- All designs become the property of the Data General Activities Committee and will not be returned.
- All entries must be received by March 1; include your name, badge number, mail stop and telephone extension.

### **Time To Sign Up For Softball League**

Spring is just around the corner and the Data General Softball League officials are right on the ball. They are formulating plans for season play and have prepared the following sign-up procedure.

Use the following form to sign up for the 1985 Data General softball season. Enclose a non-refundable \$25 sign-up fee (CHECKS ONLY, to Data General Softball League). This fee will be deducted from the total team fee which will be established in the near future.

Deadline for team entry is March 1, 1985. There is a limited number of teams that can be accommodated so do not hesitate. Sign up now...

<b>Team Name:</b> _____
<b>Team Manager:</b> _____
MS: _____ Ext: _____
Badge #: _____
<b>Team Ast. Mgr:</b> _____
MS: _____ Ext: _____
Badge #: _____

Mail this form and your fee to Donna Mattson at MS D232 in Westboro.

### **Polynesian Luau At The New England Aquarium**

The Data General Activities Committee has arranged exclusive use of the New England Aquarium in Boston for an evening reception on March 2 from 7 to 11 p.m. Tickets are \$5 per couple and include Polynesian delights and dancing to the Bo-Winiker Orchestra. Bus transportation (\$12 per couple) will be provided if there are sufficient requests. Send ticket requests to LUAU, MS F036. Include a stamped, self-addressed envelope. Checks should be made payable to the Data General Activities Committee. Requests for bus tickets go to BUS, MS 4-3 in Southboro.

### **Only \$3 For Boat Show**

The Data General Activities Committee has discount tickets (\$3.00 each) for the Annual Boat Show at the Hynes Auditorium in Boston, February 2 - 10. Send requests to BOAT SHOW, MS B111. Include stamped, home-addressed envelope. Checks must be payable to Data General Activities Committee.

### **Harlem Globetrotters At Worcester Centrum Feb. 20**

School vacation time is rapidly approaching. Make plans now to see the ever-popular Harlem Globetrotters who will perform at the Worcester Centrum on Wednesday, February 20 at 7:30 p.m. Tickets (\$7.50 each) may be obtained by sending a check, payable to The Data General Activities Committee, to GLOBETROTTERS, MS D232. Include a home-addressed stamped envelope.

### **Data General Basketball League Standings**

Standings in the Data General 1984-85 Basketball League are the following:

#### **Competitive League**

##### **Division A**

Team	W	L	%	PF	PA
Lakers	9	0	1.000	573	336
Beefeaters	5	4	0.556	355	351
M.S.D.	3	5	0.375	364	370
High Finance	1	7	0.125	337	443
Infinite Hoops	1	8	0.111	287	453

##### **Division B**

Team	W	L	%	PF	PA
N.A.F.E.	7	1	0.857	425	325
S.I.D.	6	2	0.750	378	321
Floating Points	6	2	0.750	385	377
T.P.D.	4	5	0.444	275	299
S.D.D.	3	5	0.375	279	356
Stevies Wonders	1	6	0.143	300	339

#### **Recreational League**

Team	W	L	%	F	PA
The Clash	5	0	1.000	272	132
No Names	4	1	0.800	182	153
Question Auth.	3	1	0.750	177	142
Logistics	3	3	0.500	205	215
I.S.D.	1	4	0.200	132	212
Alley Oops	1	5	0.167	159	221

## CARPOOL

**Ride Needed**, from Farrar & Grafton St, Worcester to Webo, 8:30 - 5:00, flex, Herbert x8626.

**Carpool**, needs riders, Brookline/Brighton area to Webo/Sobo, flex, User, 7093.

**Carpoolers**, from Chelmsford to Webo, 8:00 - 4:30, Neal x5082.

**Ride Needed**, from Fountainhead Apt to Webo, Alberto, 3958.

## MARKETPLACE

### FOR RENT

**Room**, Grafton Center, \$50/wk incl. everything, 366-4506 (Westboro).

**Time Share Condo**, Stowe, VT, avail 3/16-3/23, slps 6, fireplace, 883-3559 (Bellingham).

**Apt**, 2 bdrms, \$525/mo all util incl, 478-3782 (Milford).

**Harwichport Townhouse**, avail 4/27 - 5/11, slps 4, 2 baths, cable, \$200/wk, (203) 928-3533 (Pomfret, CT).

**Duplex**, 5 rm new bath & 1/2, cabinet kitchen, in-ground pool, \$575/mo + util, 1st & last, 234-3103 (Whitinsville).

**Storage**, for cars, boats, trailers, motorcycles, furniture, etc., 234-3103, (Whitinsville).

**Duplex**, 7 rm, new bath, wall-to-wall, \$550/mo + util, 1st & last, 234-3103 (Whitinsville).

**Apt**, 4 rms, storage, garage, avail March, \$410/mo + util, 845-9032 (Shrewsbury).

**Apt**, Marlboro, avail Feb. 6, 6 rms, \$400/mo + util, 562-9036 (Hudson).

**Condo**, 2 bdrms, new appliances, AC, pool, 10 min to Webo, \$68,900, 393-7981 (Northboro).

### WANTED

**Roommate**, to share house in Bellingham, private yard, washer/dryer, cable, \$300 incl all util, 883-4468/655-8000 (Blackstone/Natick).

**Roommate**, to share lg house in Marlboro, many extras, \$325/mo + 1/3 util, 481-3028 (Marlboro).

**Nantucket House**, to rent, 1st 2 wks in Aug., 655-5441 (Sherborn).

**Housing**, in exchange for babysitting/light house cleaning for graduate student, Worcester/Shrewsbury area, 232-9673 (Brookline).

**Serious Walker**, for lunch hour exercise, Susan x5065.

### FOR SALE

**Weights**, 170 lbs w/barbells, bench & leg lift, \$100, 443-2632 (Sudbury).

**Bar w/Stereo & Disco Lights**, AM/FM/8 track/record player, \$500/BO, 365-2532 (S. Lancaster).

**Board of Seasoned Oak**, \$70, must pick-up, 883-9658 (Bellingham).

**GE Electric Clothes Dryer**, \$150, 965-0122 (Newton).

**Items**, Atari 5200 w/5 cart, complete, \$60; 40 channel C.B. radio w/mag mount antenna, \$15; 350 4 Bolt Main Block w/fitted pistons, needs crank & bearings, \$100, 476-3587/476-2104 (E. Douglas).

**Items**, rose rug, 5 ft x 12 ft, \$55; GM Loveseat; GM toddler car seat, \$5, 481-4140 (Marlboro).

**Console TV**, color, maple cabinet, \$65, 792-3983 (Auburn).

**Items**, Fireplace screen, polished brass, fits up to 24 in x 36 in opening; Model railroad equipment, buildings, more, sell or trade, 528-6254 (Franklin).

**Stereo**, wood cabinet w/4 spkrs, Admiral turntable, radio & 8 track, \$150, 853-9260 (Worcester).

**Furniture**, 3-piece sectional, \$100, chair, \$30, 870-0423 (Framingham).

**Tires**, pair of Pro-Trac 60 bias belted G60-14, \$70 ea/\$130 both, 655-3039 (Natick).

**Sofa & Chair**, \$100/BO, 368-1248 (Clinton).

**Dining Room Set**, wood, mediterranean style w/2 leafs & 6 gold velvet chairs, BO, 838-2698 (Berlin).

**Items**, Refrigerator, 11.2 cu ft, white, right hinged doors, \$200; Stove, white, \$200, both/\$350, 865-6707 (Millbury).

**Computer**, DEC VT180, dual floppy disc drive, LA50 printer w/keyboard, s/w incl: Multiplan, WP & basic, \$1495, 865-6707 (Millbury).

**Items**, Color TV, 19 in Zenith table model, \$60; Indoor Jogger Treadmill, Sears, \$75, 393-6456 (Northboro).

**Maternity Clothes**, sz 10 dresses, 879-8866 (Maynard).

**Items**, X Country skis, boots, poles; Portable elect. typewriter; Radio Shack PC-2 pocket computer; Sunn 4 channel mixer/amp w/2 spkr. columns; Weights, lg bar, 2 dumbbells, 110lbs; Technics M250 cassette deck; Univox mini-korg synthesizer; Electro-Harmonix Y-triggered filter; Electrical Eng. program module for TI58/TI59 calculators, 366-1929 (Westboro).

**Microwave Oven**, Quasar MQ7700RW, \$300, 964-3641 (Newton).

**Ladies' Diamond**, 14 kt, yellow gold solitaire 30/100 ct, pear shaped, \$700, 473-7590 (Milford).

**Radial Tires**, 4 goodyear steel belted Arrivas, used 800 mi, P155/80R13, \$150, (203) 928-3533 (Pomfret, CT).

**Gym Equipment**, treadmill & bike, under warranty, \$300/ea, 366-4506 (Westboro).

**4 Season Back Packing Tent**, Eureka Caddis, nylon, 366-7283 (Westboro).

### AUTOS

'66 Porsche 912, rebuilt engine, new battery, tune up, \$2000, 366-9693 (Westboro).

'72 Oldsmobile Cutlass, rebuilt trans, new waterpump, PS/PB, 61K mi, \$1800, 870-0078 (Westboro).

'74 Ford F100, V6, 3 spd, many recent parts, \$750/BO, 529-4407 (Upton).

'75 Ford Econoline Van, 6 cyl, new tires, brakes, snrf, \$1300, 345-1887 (Fitchburg).

'78 Ford Courier Long Bed w/Cap, 5 spd, AM/FM, 78K mi, \$1700, 839-9695 (Grafton).

'78 Chevy 1/2 Ton Pickup, 47K mi, new cap, new radials, 562-6329 (Hudson).

'78 Ford Mustang, snrf, 4 spd, AM/FM/cassette, 74K mi, newly painted, \$1800, 839-4852 (Grafton).

'79 Capri Ghia, 62K mi, AM/FM/cassette, 4 spd, 4 cyl, new McPherson struts, 365-5676 (Lancaster).

'79 Firebird, 301, auto, PS/PB, AC, Cragar mags, Dunlop tires, \$4950, 529-4407 (Upton).

'79 Triumph Spitfire, white, AM/FM, 39K mi, needs starter, \$3000/BO, 692-6558 (Westford).

'79 AMC Spirit, hatch, 6 cyl, auto, new tires, \$2900/BO, 799-5472 (Shrewsbury).

'80 Toyota Corolla, liftback, 5 spd, AM/FM/cassette, PS/PB, AC, 78K mi, \$3800, 839-9695 (Grafton).

'81 Ford Escort, auto, AC, \$3700, 842-0077 (Shrewsbury).

'82 Olds Cutlass, 2 dr, V6, 60K mi, AC, new auto trans, \$6150, 851-6842 (Tewksbury).

'82 Olds Cutlass, 2 dr, V6, 60K mi, AC, new auto trans, \$6150, 851-6842 (Tewksbury).

'83 Kawasaki KDX250, \$800, 839-5041 (Grafton).

'83 Mercury LN7, 4 cyl, 5 spd, 20K mi, \$5700/BO, 533-8777 (Medway).

'83 Dodge Aries Wagon, 35K mi, many extras, \$6500, 865-4934 (Millbury).

'83 Buick Regal Turbo, V6, t-top, AM/FM/cassette, all power, 37K mi, \$8500, 784-2350 (Sharon).

'83 Nissan Stanza, 4 dr, hatch, 5 spd, PS/PB, AC, AM/FM, \$6600, 393-2815 (Northboro).

## MENU

### Westboro

**Cafeteria**, Monday, Chicken Cacciatore; Tuesday, Open Faced Turkey Sandwich/Build a Burger; Wednesday, Baked Macaroni Chop Suey/Croissant Sandwich; Thursday, Seafood Roll/Broccoli Quiche; Friday, Baked/Fried Fish.

**Pizzeria**, phone orders 10 a.m. - 2 p.m., call extension 4376.

**Southboro**, Monday, Chicken Croquettes; Tuesday, Salisbury Steak; Wednesday, Baked Lasagna; Thursday, Swedish Meatballs; Friday, Fried Fish.

**Milford**, Monday, French Special; Tuesday, Baked Ham; Wednesday, Hot Roast Beef; Thursday, Baked Lasagna; Friday, Fish & Chips.