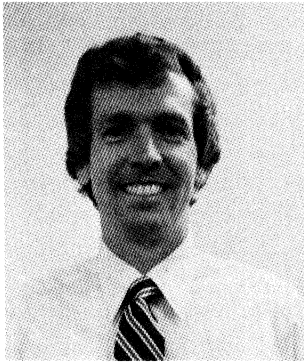


Mini News

News For The Employees of Data General

September 16, 1983

Cross Named Director Domestic Treasury Operations



David Cross

David Cross has been appointed director of Domestic Treasury Operations. He reports to Treasurer George McClelland.

David is responsible for cash management and banking relations, risk and insurance, employee benefit fund management and financial analysis.

David comes to Data General from a position as treasurer at Leeson Corporation in Warwick, Rhode Island. He previously was Credit and Rental Programs manager with the Office Systems Group of Digital Equipment Corporation and before that was with the Bank of New England.

David has a BA from Dartmouth College and an MBA in finance from the Wharton School of Business.

Controller Appointed In Business Division Group

Eric Lebideau has been appointed controller of the Business Division Group at Westboro, heading up the financial teams supporting Business Division management. Eric reports to John Gardner, controller for the Business and Field Divisions.

Eric has been European controller at Paris since 1981 and before that was controller for Data General-France. He joined Data General in 1978 from

General Automation where he had been European controller.

Eric has a BS degree in mathematics and an MBA. He recently completed an advanced management program at Duke University in North Carolina.

Reporting to Eric are Information Systems Division Controller Bob Banks; the General Systems Division Controller; and Systems Development Division Financial Planning and Control Manager Ramesh Chillar.

Field Marketing Team In Place



The Field Marketing organization includes (left to right): Gerry Cromwell, Steve Kellett, Jim Considine, Tom Cappelli and Steve Shelley. Missing is Larry Rohrer.

Field Marketing has been organized to maintain Data General's high customer satisfaction levels and pursue new Field Engineering business opportunities.

"We are the customer sales interface for Field Engineering," says Director Gerry Cromwell. "Service is a product just like hardware is, and must be marketed just like any other product."

Field Marketing is responsible for all internal and external sales activity related to contract service, upgrades, spare parts, supplies, accessories and depot maintenance, as well as Field Engineering National Accounts and contract negotiations.

Five functions within Field Marketing report to Gerry.

Jim Considine is manager, North American National Accounts. A resource to all field managers, North American National Accounts provides total post-sales support for national accounts, including planning service support requirements and coordinating headquarters support for all customer installations.

Recently appointed to his position, Jim has been with Data General for nearly 11 years. He was previously North American Logistics manager; Regional Technical Support manager at Palo Alto; District Service manager at Detroit; Regional Technical Support engineer at Los Angeles; and a field engineer at San Diego.

Tom Cappelli is manager, National Field Marketing. Field Marketing is responsible for providing support to Sales on major opportunities; selling spare parts and supplies to major accounts; and providing Field Engineering service-offering training to Sales. To accomplish these tasks, Area Field Marketing managers are located in each area.

Tom has been with Data General for more than three years, most recently as Field Engineering Regional manager at Detroit. Prior to that, he was a Field Engineering National Accounts manager. Tom has a degree in business management from Nathaniel Hawthorne College in New Hampshire and has studied toward his MBA at Detroit University.

Steve Shelley is manager, Telemarketing Sales. Telemarketing Sales is responsible for the sale of contract services, spare parts, upgrades, supplies and accessories.

Steve has held his present position for the past 18 months. He previously was manager of Compugraphic's telemarketing activities. Steve has studied toward a bachelor's degree in business management at the State University of New York at Buffalo.

Steve Kellett is a senior contract negotiator. In this position, he handles major account contract negotiations and develops major contract proposals for all Field Engineering services.

Steve joined Data General nearly three years ago as a contract negotiator. He previously was with Honeywell. He earned his bachelor's degree in business administration from the University of Notre Dame.

Larry Rohrer is Major Accounts Program manager, serving as project manager for the Forest Level Information Processing System (FLIPS) contract with the U.S. Forest Service and other similar major accounts.

Larry will coordinate all installation and follow-up activity for the FLIPS project.

With Data General for more than five years, Larry was recently most regional manager at Milford, Connecticut. He came to Data General five years ago as a remote site field engineer in Michigan, and has been a National Accounts manager at Westboro

and branch manager at Oakland, California and at Los Angeles. Prior to Data General he was with Burroughs. Larry has an associate's degree in electrical engineering from ITT Technical Institute.

"Data General has a customer-oriented focus," says Gerry. "Field Marketing is geared to meet customers' needs by making them aware of the wide variety of services Field Engineering has to offer."

New Policy For Non-Revenue Equipment Purchases

Corporate Materials has announced a new policy regarding non-revenue equipment purchases.

If an internal user has no demonstrable need for a new product, and older generation equipment is available, the older generation equipment will be substituted instead. However, pricing will be based upon the pricing of the generally lower-cost unit.

For example, if an internal user orders an ECLIPSE MV8000 II system, and there is no demonstrable need for it, Manufacturing will substitute an ECLIPSE MV/8000 system, if available. Pricing for the substituted ECLIPSE MV/8000 system would be based on a comparable ECLIPSE MV/8000 II system.

Currently, the products and substitution list is as follows:

Newer Products	Older Products
ECLIPSE MV/8000 II	ECLIPSE MV/8000
ECLIPSE MV/4000	ECLIPSE MV/6000
DASHER D210/D260	DASHER D100/200
DASHER D410/D460	DASHER D400/450

This list will be added to from time to time as inventories of particular older products warrant. You will receive a notification in your acknowledgement if a substitution has been made.

Further questions should be directed to Ken Schmidt of Corporate Materials, Westboro extension 5013.

Westboro

People

Harry Molloy Named Manager Of Manufacturing Costing

Harry Molloy has been named manager of Corporate Manufacturing Costing. He reports to Tracey Zellmann, director of Advanced Manufacturing Engineering and Technology.

Harry is responsible for generating cost estimates for manufacturing products; developing systems to track costs and identify areas for cost improvement;

managing systems to track capital project proposals; and managing Corporate Industrial Engineering with functional responsibility for Industrial Engineering groups at Manufacturing facilities.

Harry was most recently controller of North Carolina Operations, based in Clayton and responsible for all financial operations at Clayton, Apex and Research Triangle Park.

Joining the company in 1977 as an accountant, Harry moved to Clayton in 1979 as accounting manager and became controller the following year. Prior to joining Data General, he held accounting positions at GTE-Sylvania.

Harry has a BS in accounting and an MBA from Suffolk University.

Mark Blessing has joined Data General as an associate Marketing specialist in the Information Systems Division (ISD). As a member of the Marketing Support organization, he will be responsible for competitive analyses, market reports and associated Field sales tools in support of ISD product announcements.

Mark has worked as a computer specialist at the Smithsonian Astrophysical Observatory.

Mark recently has attained his MBA from the University of Virginia (Colgate Darden School) and has a BS in economics from Northwestern University.

Brian Bastien has joined Field Engineering Technical Publications as an associate technical writer responsible for writing maintenance documentation for large systems.

Brian has been with Data General for seven years. He has been an assembler, test operator, systems technician and, most recently, a technician III/group leader in Southboro.

Brian has a certificate in computer electronics from Sylvania Technical Institute. In addition, he has attended Dean Junior College and has completed several hardware and software courses through the Manufacturing Training department.

James Hunt and **Elizabeth Darling** have joined CAD (computer-aided-design) Tools reporting to Charlie Bures, Gate Array project leader.

James will work within the Systems Development Division to define the database model for gate arrays and support digital logic simulation. He has a BS in computer science and physics from Yale University.

Betty will develop programs to do design rule checking for various gate arrays. She is a recent graduate of Fitchburg State College with a bachelor's degree in computer science.

Greg James joins the Data Management area as a programmer supporting the PRESENT information presentation facility.

Greg comes to the company after recently graduating from Brown University with a BS in computer science. He reports to Section Manager Roy West.

Gaylord Miyata, Peter Conway and **John Shiroma** have joined Distributed Systems reporting to Ken Kossack.

Gaylord, a project leader, is responsible for the support and enhancement of XODIAC. Prior to coming to Data General, Gaylord held positions with Digital Equipment Corporation, R.C.A. Corporation and Computer Research Corporation. He holds a BA in mathematics from the University of Colorado.

Peter and John are programmers. They contribute to the support of Data General's XODIAC communications software. Peter holds an MS in computer science from Rensselaer Polytechnic Institute and a BS in computer science from Union College. John holds a BS in computer science from MIT.

STOP For Safety

There's two-way traffic these days at the front entrance to Data General-Westboro as construction has begun on the Howard Johnson's Hotel. In the weeks and months to come, traffic can be expected to increase.

Stop signs have been installed on Data General roadways meeting Computer Drive at both 4400 and 2400 Computer Drive. Employees must stop before entering Computer Drive.

Employees also should note that Computer Drive is now marked for four travel lanes, two in each direction, for the entire length. Choosing the proper lane and maintaining a moderate speed can make your travel easier as well as that of other employees.

Cafeteria Opens For Evening Meals

The Westboro cafeteria now will be open Monday through Thursday evenings from 5:30 to 6:30 p.m. Hot and cold sandwiches will be available during that time.

Copy key readings are due in the Westboro Copy Center on Monday, September 19 and Tuesday, September 20. Call extensions 6141 or 6073 with your reading.

Southboro

People

Three employees have recently joined Southboro's Low Volume Operation as associate engineers.

David Dumas helps train production and test employees in the use of new test equipment as it is introduced to Manufacturing. A graduate of WPI, David holds a BS in industrial engineering.

John Willoughby is working to modify fault finder test equipment and is developing software test menus for the Low Volume Operation. John is a graduate of WPI and recently earned a bachelor's degree in electrical engineering and computer science.

Both David and John report to Quality Assurance Engineering Manager Dan Spier.

Joseph Cawley is implementing an efficiency study on material handling. He is also developing a data base on various Low Volume printed circuit boards (PCB) to be used in new production processes. Joe has a BS in industrial engineering from the University of Rhode Island. He reports to Manufacturing Engineering Manager John Forhan.

New Machining Center Operational In Southboro

Southboro Manufacturing's Metal Fabrication area continues to expand its capabilities as a machining competency center. Recently Metal Fabrication, which produces numerous metal components as well as prototypes, has added a new piece of equipment.

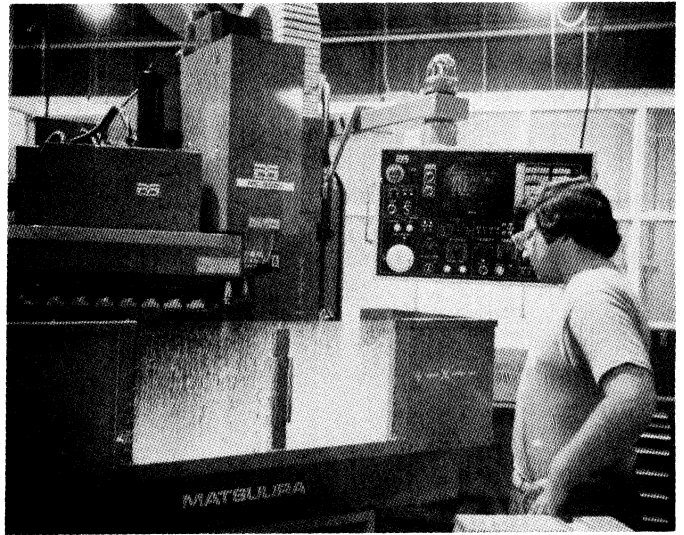
"A state-of-the-art 'machining center' will substantially decrease the time required to produce metal parts," says Engineering Manager Vin Tucci. Vin explains that the center is numerically controlled and, through software programming, will automatically perform each specific step needed to create a metal part.

Already the center is being utilized to produce machined castings for several different Data General peripherals and has helped the Metal Fabrication area speed up turn around time on orders. Vin states, "Before we installed this system we were able to produce high quality parts, now Metal Fabrication has both fast production time and high quality, these factors are essential for a competency center." Additionally the new equipment is interfacing with the CAD/CAM (computer-aided-design/ computer-aided-manufacturing) system in the area.

The machining center replaces an older numerically controlled system which has been moved into the

Model Shop where it will be used in the production of prototypes. According to Vin, this was a cost effective way of enhancing two areas. The older system was very accurate but not as fast as the new one. Vin notes, "It is fine for the prototype area and utilizing the older numerical control equipment will help Model Shop employees produce even higher quality prototypes. The new center helps Metal Fabrication realize the goals of the Data General Parts Per Million Program while increasing productivity."

Metal Fabrication Machine Operator Mike Casasanto believes that this new machining center has increased efficiency, "The system is great. It is a quiet, fast unit and we have been able to more than double the amount of parts we produce in a day. Working faster and producing higher quality parts is rewarding."



Mike Casasanto demonstrates the capabilities of the recently installed machining center.



It's here! The new machining center as it arrived at Southboro's Building 5.

Southboro Names New PRIDE Circle Facilitator



Steve Phaneuf

Steve Phaneuf has been named PRIDE Circle Facilitator in Southboro Manufacturing joining Facilitator Joe Crisefulli. "Steve's position represents the growth of the program and I know together we can make it even stronger," says Joe.

Steve's interest in the program began more than a year ago when he attended PRIDE Circle Leader Training and became a PRIDE Circle leader in Southboro. He believes that through this experience he became aware of just how much employees can gain by working together. "The program encourages employees to examine their interaction with co-workers as well as look at how different jobs in their areas are performed." Says Steve, "Improved efficiency and enhanced interpersonal relationships are two significant ways of evaluating the success of a Circle."

According to Steve when employees use brainstorming techniques they are able to identify issues which impact job performance in their department. Sometimes brainstorming can help clarify exactly what needs improving in an area. "Even when research shows that a work-related change a circle thought would be effective, proves to have less of a positive impact than originally thought, the Circle members have gained something. They have taken a closer look at how a specific task is accomplished."

Steve further explains that he became increasingly involved in the program when he saw how many positive accomplishments could be made through PRIDE Circles. "I saw what a motivator success is for employees as presentations were made to managers and then implemented. I decided I wanted to become a facilitator so I could be more involved in helping in that process."

Joe is confident that with this expanded coverage even more Circles will research issues and bring them to presentation. Currently, Southboro has 26 active Circles. Steve already has set the goal of assisting in forming Circles in several areas where efficiency is essential. "We have a few high speed areas where fast turn around is key. I hope to work

with employees in those departments to see if a Circle might be the answer for continuing to meet their goals."

Joe and Steve agree that all program endeavors will be better supported with two facilitators in Southboro. "I am looking forward to meeting with employees and learning with them as I grow in my new role," relates Steve.

With Data General for three years, Steve had been with Materials where he was most recently a production coordinator supporting Metal Fabrication. He holds a BS in education from Framingham State College.

Cost Reduction Hot Line Gets Results

The SIO (Systems Intergration Operation) Cost Reduction Program has made some very significant contributions to the efficiency and productivity of Southboro. The accomplishments of the program are due to employee suggestions forwarded to program Coordinator Joyce Barrus. All employees may submit suggestions in writing or by calling the *Hot Line* at extension 7385.

Metal Fabrication Employee Retires



Frank Stevens has retired from the Metal Fabrication area after six years of service at Data General. Frank (left), who was most recently a hardware tool specialist, is pictured with Supervisor Arthur Scott as they share a moment and talk about Frank's future plans.

Milford

People

Larry Lapide has been named manager of Marketing Research for the Field Engineering Division. He is responsible for revenue forecasting, competitive analysis and surveys. Larry reports to Paul Phaneuf, director of Marketing and Business Planning.

Prior to this appointment, Larry was a senior management science analyst in the Quantitative Management Services department, primarily working on projects involving sales/marketing research and forecasting. Before joining Data General, he was a consultant at Arthur D. Little, Inc. in the Marketing and Retailing Systems Unit of the Operations Research section.

Larry has a bachelor's degree in electrical engineering from The Cooper Union, an MS degree in electrical engineering from MIT and a PhD in operations research from the University of Pennsylvania.

Field

People

Larry Johnston has been named Branch manager of the Los Angeles Customer Education Center, reporting to Regional Education Manager Harvey Martin. In this position, Larry is responsible for the staff, curriculum and customer support activities associated with the L.A. Center.

Larry came to Data General in 1980 as a senior instructor. Since then, he was supervisor and section manager. Prior to joining the company, Larry worked for Perdec Corporation, Community National Bank, and Burroughs Corporation.

Bob Atwater has been named Field Engineering branch manager at Worcester. He reports to the regional manager.

With Data General for nearly five years, Bob was most recently Area I Service Operations Center manager. He was previously engineer in charge at Wellesley, Massachusetts and a field engineer at Westboro. Prior to Data General, Bob was with Burroughs for more than 10 years.

Bob is taking classes in the management certification program at Worcester State College.

Donna Marie Frappier has transferred from a Test technician's position at Milford to become a senior Field Engineering technician at Wellesley, reporting to Branch Manager Dennis Ambrose.

Donna Marie had been a Test technician, field technician and Test operator in Field Engineering

Logistics since joining Data General nearly two years ago. She has an associate's degree in industrial electronics technology from the Worcester Industrial Technical Institute.

Benefits

Dates To Remember

- TODAY, September 16, Savings and Investment forms are due in the Benefits section of the Personnel department by the end of the day.
- Tuesday, October 18 and Saturday, October 22 are the PSAT test dates required to be taken by high school students applying for a Data General scholarship. Applications and brochures are available in Personnel and Benefits.

Second Surgical Opinion Program

Individuals covered under the Data General Medical Plan (Prudential) should keep in mind the requirements of the Second Surgical Opinion Program if they wish to receive full plan benefits for certain surgical procedures. If one of the procedures listed below is performed without the required second opinion, only 80 percent of *All* expenses related to the surgery will be considered eligible under the medical plan.

This is how the program works. A second surgical opinion must be obtained if your doctor recommends one of the following procedures on a non-emergency basis for you or one of your dependents:

- cataract removal
- gall bladder removal (cholecystectomy)
- removal of hemorrhoids (hemorrhoidectomy)
- hernia repair (herniorrhaphy)
- hip replacement
- removal of vertebra disc (laminectomy)
- partial or complete breast removal (mastectomy)
- removal of knee cartilage (meniscectomy)
- removal of prostate gland (prostatectomy)
- removal of uterine tube and/or ovary (salpingectomy/oophorectomy)
- hysterectomy
- repair of deviated septum (septoplasty, submucous resection)
- tonsillectomy
- varicose vein ligation/stripping (separating or tying of veins in leg)
- coronary bypass

Non-emergency surgery is a procedure which may be scheduled at the convenience of you or your doctor and if delayed for a few weeks will not cause serious or life threatening complications.

Call Prudential as soon as surgery is recommended. Your benefits administrator can advise you of the telephone number and you may call collect. Prudential will give you the name of two or three Board Certified Specialists within 30 miles of your home and arrange an appointment with the specialist you select.

After the exam, the specialist will notify you, your doctor and Prudential of his recommendation. If the need for surgery is confirmed, full plan benefits will be payable when surgery is performed. If the need for surgery is not confirmed, you must get a third opinion to receive full benefits. The procedure for obtaining the third opinion is the same as outlined above. Regardless of the results of the third opinion, benefits will not be reduced if you decide to have surgery.

The second and third opinion will be provided at no cost to you. If you call Prudential and request a second opinion but there is no Board Certified Specialist in your area, the required second opinion will be waived. You do not need a second opinion for emergency surgery.

Surgery is not always the best or only alternative to treating a medical problem. The second surgical opinion benefit is designed to assist you in exploring other courses of treatment and eliminate unnecessary surgeries.

Reducing Medical Costs

Everybody likes to save money. When you go shopping, you look for sales and bargains. But when you're sick, you probably don't think about how you can save yourself money -- you're concerned about getting well. However, there are some ways you can reduce your expenses without sacrificing the quality of your medical care.

See your doctor in his office or clinic for treatment of an illness or minor injury. The cost of care in a hospital emergency room is expensive and the doctor doesn't always need such sophisticated facilities to properly treat you. If you're not sure where you should go for treatment, call your physician and let him determine where he wants to examine you.

Try to reduce the number of days you're in the hospital. Before you check into the hospital, ask your doctor if he can arrange pre-admission testing for you on an out-patient basis. Except for emergencies, avoid being admitted to the hospital on a weekend. Many hospitals provide little more than routine nursing services on the weekend except for emergency situations.

The cost of home health, convalescent and hospice care facilities are less expensive than daily

room and board charges by a hospital. Ask your doctor if home health, convalescent or hospice care can be prescribed in place of a lengthy hospital stay. The Data General Medical Plan and most of the Health Maintenance Organizations (HMOs) provide benefits for these alternatives to in-hospital care.

If surgery is proposed, obtain a second opinion. The Data General Medical Plan (Prudential) requires a second opinion for some non-emergency procedures to qualify for full plan benefits. For your own peace of mind, you may want to get a second opinion for other procedures as well. For minor surgery, see if the procedure can be performed on an out-patient basis or in an ambulatory surgical center.

Ask your physician how much he will charge for his services and what the exact course of treatment will be. Find out if alternatives are available. For instance, if the doctor orders physical therapy, can you achieve the same results by doing exercises at home?

Review your medical bills for accuracy. Errors are not uncommon. Your doctor can advise you of tests and services he ordered if you're not sure of the charges on your hospital bill. If you find a mistake, ask the hospital or doctor for a corrected bill before submitting it to Prudential for payment.

Ask your physician to prescribe generic drugs when possible. If you take medication on a regular basis, ask the doctor to prescribe the largest quantity allowable. The "unit cost" often decreases when the quantity increases.

Keep your medical bills until the cost of your care meets or exceeds the deductible. Filing a claim that is not eligible or insufficient to meet the deductible adds to administrative costs. When you file a claim, make sure you fully complete the claim form. Requests for additional information also increase the cost to process your claim.

You can reduce your out-of-pocket expenses and help control the cost of medical insurance by eliminating unnecessary medical charges. Don't look for bargains only when you go to the market or clothing store. Be a smart health care consumer, too.

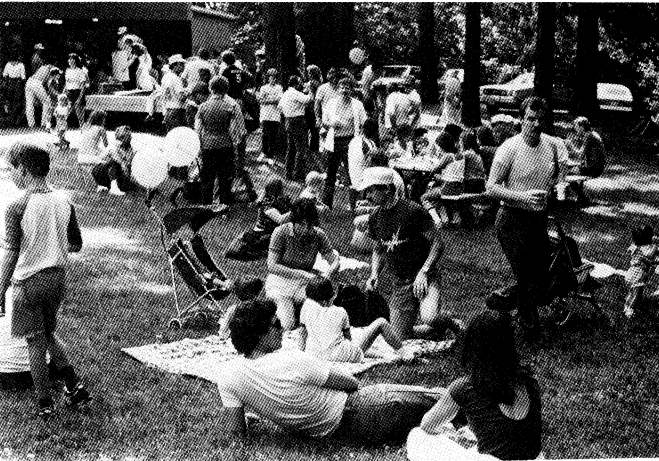
Digest

Clearing Up Connecticut The address for the *Field Engineering Branch Office* is 444B Foxon Rd., East Haven, CT 06512. The office can be reached by: phone-(203) 467-6253; mail code-1M; or TWX-K622. The *Field Engineering Regional Office* is located at: 123 West Main St., Milford, CT 06460. The office can be reached by: phone-(203) 874-2535; mail code-1J; or TWX-K912.

Activities

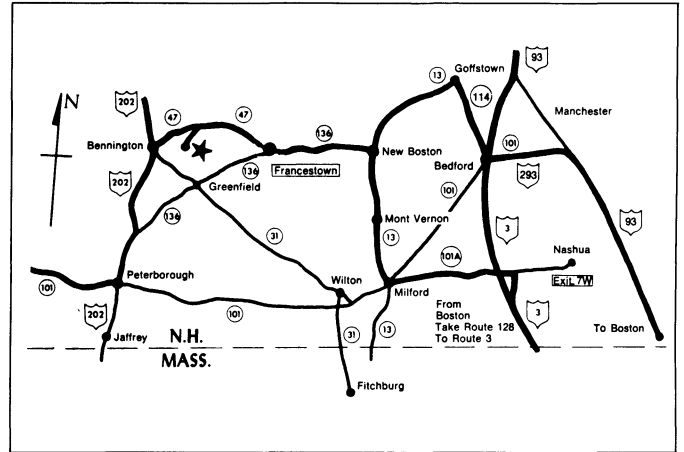
Hot Times At Riverside

More than 4000 Data General employees, families and friends ignored the 90 degree temperatures this past weekend and ventured to Riverside Amusement Park in Agawam. Many cooled themselves on the flume or copped a rest in the shade while enjoying lunch.



Crotched Mountain Closes Outing Season

Crotched Mountain; Saturday, September 24. Visit New Hampshire during fall foliage season. Enjoy hot tubs in the crisp air or swim if the weather permits. There will be bingo and square dancing and a DJ throughout the day for those who like to try a little of everything. Or how about a hayride or an hour-long ride to the top of the mountain? Don't miss out, contact outing chairperson Evie Dumas (x5562 in Westboro) for ticket information.

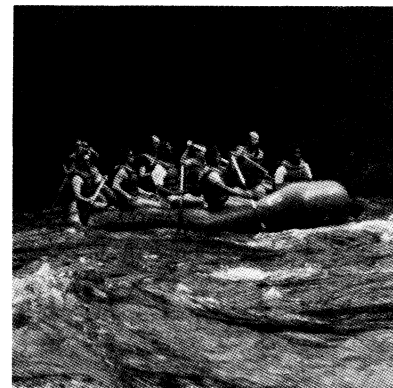


Follow the signs for the Crotched Mountain Ski area NOT the Rehabilitation Center.

Outing Tickets Available Through Wednesday, September 21

All requests for tickets to Crotched Mountain will be honored if received no later than Wednesday, September 21, at 5 p.m. Tickets will not be sent to the individuals' homes but may be picked up at the entrance gate at the mountain.

White Water Wonderland

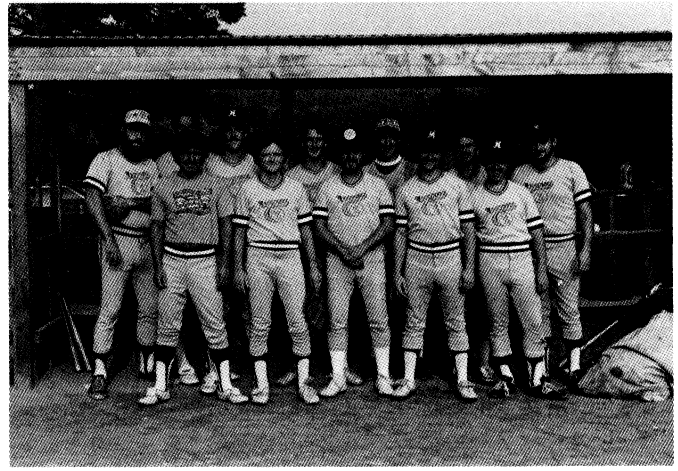


Nearly 90 Data General employees and their friends experienced fear, fun and the rush of wild water last weekend in the back woods of Maine. The adventurer travelled an unforgettable journey down the wild Kennebec River for 13 miles of huge waves and spectacular scenery.

**Softball League Closes Season;
NAFE, DS&C and WCIF Take Inter-Division Titles**



NAFE took the Competitive League playoff title beating Maintenance in three straight games.



Maintenance, Competitive League Runner-ups



In the Recreational League DS&C emerged victorious over Marketing after battling it out in five games.



Marketing, Recreational League Runner-ups



WCIF swept FESS off their feet in three games to walk away with the inter-divisional Fun League playoff title.



FESS, Fun League Runner-ups

Come On Along!

ENTERTAINMENT

Disney's Magic Kingdom On Ice, Thursday, October 13 at the Centrum Cost: \$7 per ticket. Evening (7:30 p.m.) performance. Send requests (checks payable to Data General Activities Committee) with a self-addressed stamped envelope to: DISNEY, MS D127.

Tony Bennett, Sarah Vaughn and Buddie Rich, Wednesday, October 19 at the Centrum. Cost: \$13 each. Evening (7:30 p.m.) performance. Send requests (checks payable to Data General Activities Committee) with a self-addressed stamped envelope to: BENNETT, MS D127.

Discount Movie Tickets

Discount movie passes are available to Sack Theatres, General Cinemas and Showcase Theatres. Each pass costs \$2.50 and may be picked up from Lori Clancy (x6630) in Westboro, Beth Peduto (x2019) in Milford and Jeri Goulet (x7400) in Southboro.

Basketball Season Bouncing Up!

A meeting for basketball coaches has been scheduled for Tuesday, September 27 at 6 p.m. in the Westboro cafeteria. At that time league officers will be elected and league plans will be discussed. All coaches must attend.

Ski Alert

The Data General Ski Club is planning the following trips for the upcoming season:

Killington, VT	12/10-12/12
Stowe, VT	1/1-1/8
Lake Tahoe, Heavenly Valley	2/2-2/9
Lake Placid, NY	2/17-2/20
Winterfest at Mt Wachusett	3/3
Sugarloaf, ME	3/9-3/11
Sugarbush, VT	3/24-3/26
Ski Lesson at Mt Wachusett	seasonal

For a detailed listing of these events send your name, mail stop and location to: Ski Club, MS C223.

Dashers Introduce Road Race Changes

In preparation for the upcoming Dasher Road Race on Friday, September 23, the Data General Road Race Committee has posted a map of the race courses in the cafeterias in Westboro, Southboro and Milford.

In addition a number of format changes have been implemented. This year all races will begin at 5:15 p.m. from the rear of Building 14A in the east corner of the north parking lot.

If you are participating in the road race, take a careful look at the routes:

10K And 3-Mile Foot Races Starting line in the rear north parking lot. Runners will head off behind Buildings 14A and 14B past the access road to 2400 Computer Drive, around and out the main driveway onto Computer Drive. From that point the race route will remain the same as in the past until runners return to the main driveway into Data General. ALL runners must enter the driveway, run straight back to the rear of Building 14A and finish where the race began.

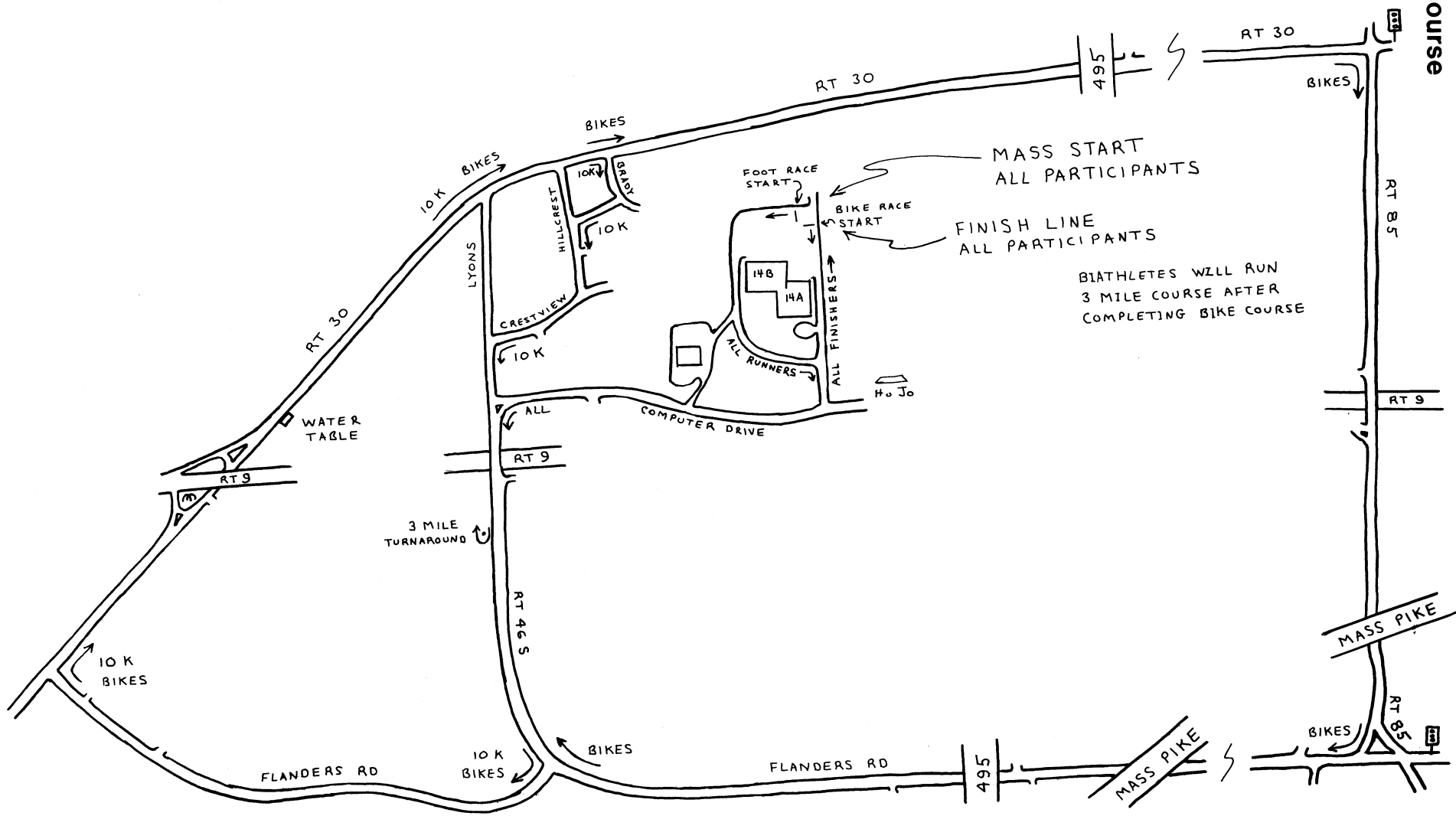
Bike Race Increased To 15 Miles Bikers will start at the same time and same place as the runners *except* bikers will proceed directly out the driveway past Building 14A onto Computer Drive. From there the route is as follows: left across Rt. 9, right on Flanders Rd., right onto Rt. 30 straight to intersection of Rt. 30 and Rt. 85 into Southboro, right turn onto Rt. 85, right onto Flanders Rd., right onto Rt. 46S to Computer Drive, to the main entrance of Data General, straight down the driveway, past Building 14A, finishing where the race had begun.

Biathlon Combine the 15-mile bike race with the 3-mile foot race.

NOTE: At the start of the races (5:15 p.m.) all vehicles will be asked to stop until the racers have passed. Caution should be exercised when passing bikers or runners on the roads.



Take A Good Look At The Course



(MAP IS NOT TO SCALE)

CARPOOL

Ride Needed , from Cambridge (Harvard Sq.) or Somerville (Union or Porter Sq) to Webo, call Marcia x4152.

Create Carpool , from Webo to Boston University, Mon. night class, 6-9, call Marc x3340.

Create Carpool , from Webo/Sobo to Boston University, Wed. night class, 6-9, call Chris x7913.

MARKETPLACE

Free

Kittens , 2 females, 1 grey calico, 1 yellow tiger, 393-6581 (Bellingham).

Kittens , 2 black/white & 2 grey, 966-0651 (Bellingham).

Found

Change Purse , in lavatory, x6100.

For Rent

Apt , lg, 2 bdr, Hopkinton/Milford line, no pets, \$475 + util, 449-4993 (days) or 478-2899 (eves) (Milford).

Apt , 2 bdr, \$300/mo, 234-9210 (Whitinsville).

NH Lakefront , 3 bdr, 2 bath, \$100 weekend, \$300 wk, 528-9733 (Milford).

Efficiency Apt. , avail. 10/1, 393-8272 (Northboro) ask for Karen.

House , Worcester, 3/4 bdrs, hdwd flr, will rent w/option to buy, \$600/mo + util, 872-5725 (Framingham).

Wanted

Apt , professional seeks 1 or 2 bdr. apt. in Walpole/Norwood area, willing to be roommate, 631-2191 (Marblehead) aft. 7

For Sale

Boat , '80 Glen-L Kit w/20hp. outboard, 966-0108 (Bellingham).

House , newly ren, lg. 1800s colonial, nothing down, 966-0108 (Bellingham).

Items , king sz. bed frame & box spring; Spanish style den set; 2 lamps; Admiral refrig; maple dining room set; living room set, 966-1261 (Bellingham).

Wood/Coal Stove , used 3 yrs, \$350, 393-6581 (Northboro).

Moving Sale , 9/17, 10am-4pm, 64 Hilldale Rd, Ashland, rain date 9/18, 881-4771 (Framingham).

Battery , new, Eastern, sz. 24F, top posts, 5 yr. warranty, \$45, 263-5034 (Acton).

Superscope Cassette Deck , w/dolby, \$65, 839-9560 (Grafton).

Items , Pine Barron wood/coal stove, new; electric shovel, 1 yr. old, 753-6943 (Worcester).

Baby Grow Car Seat , new, \$40, 845-9220 (Shrewsbury).

Refrigerator , \$75, 569-9555 (E. Boston).

House , 2 family, 9 bdr, vinyl siding, wood stove, 3 car garage, 476-3273 (E. Douglas).

Snowmobiles , two '72 Snow Prince, 16 hp, 24 hp, crest double, tilt trailer, \$600, 486-4985 (Littleton).

Truck Tires , 2 Armstrong 10 x 16.5, mounted & balanced on 8-lug rims, BO, 234-8451 (Whitinsville).

Jacobsen Snow Blower , 2 stage, 8 HP, 26 inch, elec. start, chains, 842-9483 (Shrewsbury).

Russo II Wood/Coal Stove , + heat shield, used 1 1/2 seasons; sound design stereo record player, 562-6302 (Hudson).

Desk , child's, wooden w/ chair, \$15, 485-0071 (Marlboro).

Skis , Rossignol 195cm, Garmont boots size 10, Tyrolia bindings, \$100, 534-0984 (Leominster).

Ring , pear shaped Lindy star sapphire w/2 diamond chips, woman's size 6, \$100/BO, 429-6359 (Holliston).

Living Room Set , sofa, chairs, lamps, tables, etc, priced right, 655-3039 or 655-0222 (Natick).

House , older Cape, 1 1/2 baths, sun porch, garage, in Milford, 473-7842 (Milford).

Velbon Camera Tripod , model VE-3, never used, \$30, 234-8468 (Whitinsville).

Items , Minolta SRT-101, 35mm camera, \$55; Lawn Boy lawn mower, \$20, 651-0005 (Natick).

Darkroom , complete w/Omega B66-XL enlarger, \$350, 655-8687 (Natick).

Items , crib, playpen, car seat, 966-0527 (Bellingham).

Stereo Cabinet , Scandanavian Design, teak, 70 x 16 1/2 inches, \$125, 366-5823 (Westboro).

Waterbed , king size, \$100, 478-6164 or 473-3444 (Milford).

Bedroom Set , 4 piece, single bed, \$125, 529-4407 (Upton).

House , 4 bdrms, Cape, garage, dead end street, Lancaster, \$58,000 365-2532 or 365-5435.

Autos

'64 Chevy II Nova , 2 dr. sedan, 6 cyl, auto, 70,000 original mi, \$480, 393-8861 (Northboro).

'69 Mustang Fastback , auto. on the floor, engine needs work, \$900/BO, 966-1261 (Bellingham).

'70 Plymouth Fury III , V-8 , air shocks, AM radio, \$650/BO, 393-3028 (Northboro).

'71 VW Beetle , 2, one in running cond, one good for parts, BO, 533-7806 (Medway).

'72 Datsun , 24OZ, for parts only, must tow, \$600, 234-7049 (Northbridge).

'72 BSA 650 Lightning Motorcycle , 13,000 original mi, \$900, 326-4241 (Dedham).

'73 Dodge Dart Slant 6 , 2 dr, \$1200/BO, 244-4771 (Newton).

'73 Pontiac LeMans , PB/PS, body rust, \$450, 478-0560 (Milford).

'74 Opel Manta , 4 sp, runs but needs work, \$500, 234-7049 (Northbridge).

'74 Opel Manta Luxus , 30K mi. on rebuilt engine, \$1200/BO, 894-2316 (Waltham).

'74 Chevy Impala , station wagon, needs exhaust, BO, 485-4292 (Marlboro).

'75 Firebird Formula , 350, V-8, AC, chrome rims, auto, \$1800/BO, 485-7222 (Marlboro).

'75 Saab 99 , for repair or parts, low mi, BO, 244-8439 (Newton).

'77 Lincoln Town Car , 69K mi, leather interior, loaded, Arriva steel belted radials, \$5400, 543-8470 (Foxboro).

'77 Toyota , 4 dr, standard, \$1500, 481-2788 (Southboro) aft. 5.

'78 Sunbird , 4 cyl, 4 spd, new tires, shocks & exhaust, 60K mi, \$3000/BO, 366-8426 (Westboro).

'79 Honda Civic Hatch , 4 sp, new muffler, 49K, \$2800, 473-7352 (Milford).

'79 Kawasaki KZ400 , 8K mi, \$900/BO, 393-2065 (Northboro).

'80 Yamaha SR 2506-R , 1100 mi, \$800, 485-4292 (Marlboro).

'81 750 KAW LTD , 4,800 mi, \$1800/BO, 393-8272 (Northboro) ask for Karen.

'82 Mercury Lynx , 4 sp, PS/PB, AM/FM, warranty, 7500 mi, \$6300/BO, 473-2665 (Milford).

'82 Mazda 626 , 4 dr, AC, 50K mi, BO over \$7500, 527-0453 (Newton).

MENU

Westboro Cafeteria , Monday, Veal Parmesan; Tuesday, Chicken Chimichanga; Wednesday, Fettucini Primavera; Thursday, Quiche; and Friday, Fish.

DeeGee's , Monday, Monte Christo Sand; Tuesday, Ham & Cheese Omelet; Wednesday, Quiche Lorraine; Thursday, Reuben Sand; Friday, Seafood Crepe.

Milford , Monday, Italian Special; Tuesday, Roast Turkey; Wednesday, Saugage Kabob; Thursday, Pizza; Friday, Fried Clams.

Southboro , Monday, Spaghetti & Meatballs; Tuesday, Beef Stew; Wednesday, B-B-Q Chicken ; Thursday, Macaroni & Cheese; Friday, Fried Fish.

MINI NEWS , All ads must be submitted in writing and include employee's name, home phone and extension number. All ads must be received by 11 a.m. Tuesday morning of the week published. Send to Cynthia Myers, MS A-235.