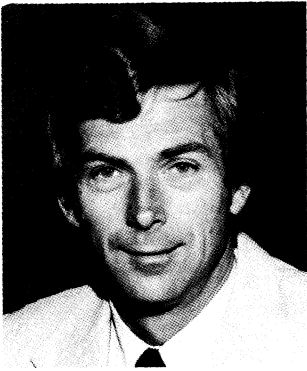


# Mini News

## News For The Employees of Data General

---

August 26, 1983



Wayne Fitzsimmons



John Dougall

### **Wayne Fitzsimmons Named Vice President, Americas/Far East**

Wayne Fitzsimmons has been named vice president, the Americas/Far East (AFE), reporting to Executive Vice President Herb Richman.

Wayne, who will make his office at Westboro, is responsible for field operations in Asia, Australia, New Zealand and South America. Reporting to him are Jerry Greene, regional manager, Asia; Charles Kent, general manager, New Zealand; Dick Bright, manager, Latin America; John Filmer, who has recently been named general manager, Australia; and home office AFE support operations.

Data General-Australia will continue to provide Marketing, Personnel, Systems and Field Engineering staff support to Data General subsidiaries and distributors in Australia, New Zealand and Asia.

Wayne joined Data General to establish the company's Australian subsidiary in January, 1973. He was general manager, Data General-Australia until being named general manager, United Kingdom and Ireland in 1980.

Wayne earned his bachelor of engineering degree from the University of Queensland in Australia.

### **Dougall -- General Manager U.K. and Ireland**

John Dougall is promoted to general manager, United Kingdom and Ireland, succeeding Wayne. John reports to Ray Fortune, vice president, Europe.

John joined Data General in February, 1980 as general manager, Australia/New Zealand, a post he held until being named general manager, Australasia last year. He was formerly in IBM sales and marketing positions in both Australia and the United States. He holds a bachelor of commerce degree from the University of Melbourne.

### **Filmer -- General Manager Australia**

John Filmer, who is now general manager, Australia, joined Data General as an account manager in 1976; served as country manager in Italy and branch manager in the United Kingdom; and was named Sales manager, United Kingdom and Ireland in 1980.

He has a bachelor of science degree in mechanical engineering from London University.



John Kavazanjian



Dick Driscoll

### **Organization Changes Announced In Manufacturing**

Corporate Purchasing has become part of the Materials and Manufacturing Services organization. It was formerly part of Northeast Manufacturing Operations.

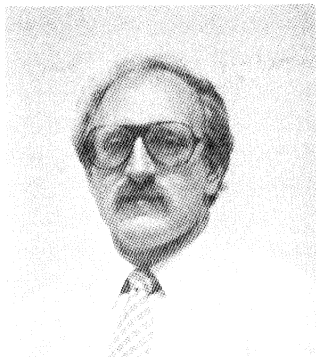
*John Kavazanjan* is named director, Corporate Purchasing, reporting to Vice President Lee Henning.

*Chuck Enright* is on special assignment to Vice President Lee Henning.

John joined Data General in the spring of 1982. He was formerly vice president of Operations with Inter-Tel Inc. in Phoenix and Business Operations manager for the Commercial OEM Product Group at Digital Equipment Corporation.

A graduate of Massachusetts Institute of Technology, John has a BS in chemical engineering and a master's degree in finance from MIT's Sloan School of Management.

*Dick Driscoll* replaces John as director of Manufacturing Planning, reporting to Senior Vice President Dave Chapman. Dick, who was formerly manager of Design Assurance Engineering, also becomes chairman of the Westboro PRIDE Circle Steering Committee.



*Gerry Tammi*

Dick has been with Data General since 1976, most recently as manager of Design Assurance Engineering (DAE) and formerly manager of Software Quality Assurance within DAE. Before Data General, Dick was with IBM in various engineering positions for nine years.

He holds a BS in mechanical engineering from the University of Lowell and an MBA from Rivier College.

Until a successor is named to Dick, Design Assurance Engineering reports directly to Bill Kelleher, director of Quality Assurance.

Manufacturing Costing moves from Materials and Manufacturing Services to the Advanced Manufacturing and Technology organizations, reporting directly to Director Tracey Zellmann until a manager is named. The operation formerly reported to *Dave Gates*, who recently took a position as regional manager of Planning and Operations Support in International Manufacturing, based in Hong Kong.

Dave has been with Data General for nearly six years. He joined the company at Portsmouth as accounting manager; was later named Southboro Controller; and has been in his Manufacturing Cost position for the past 18 months.

Dave has a BS degree from University of Lowell and has done graduate work at Northeastern and New Hampshire Colleges.

*Gerry Tammi* joins Manufacturing at Westboro on a rotational assignment, reporting to Senior Vice President Dave Chapman.

Gerry has been Engineering manager, Bipolar products at Sunnyvale, since joining Data General in January, 1981. Before that he was Bipolar Memory Engineering manager at Signetics Corporation and held various positions for 10 years with Fairchild Camera and Instrument.

Gerry is a native of Massachusetts and has a BS in electrical engineering from Worcester Polytechnic Institute.

## **Reed Named Director North American Field Support**

*Clayton Reed* has been promoted to director, North American Field Support, reporting to Frank Keaney, vice president, North American Sales.

"In his new position, Clayton will bring a new level of responsiveness and support to our field Sales organization," states Frank. "He will be responsible for improved coordination between North American Sales and the business divisions; expanded North American field Sales support; and reflection of the customers' needs within all home office operations."

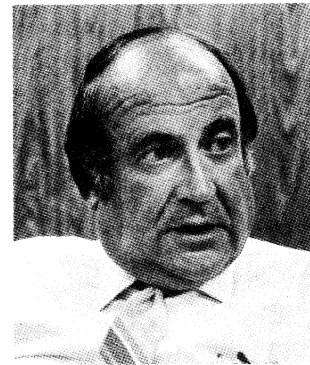
Reporting to Clayton are major Sales support functions including Application Directed Marketing, which includes National Accounts, Office Automation and Industrial Automation; Corporate Sales Support; Systems Engineering; Telemarketing; and Marketing Education.

Prior to his promotion, Clayton was North American Sales manager and, before that, Midwest Area Sales manager. He joined Data General in 1982 after 17 years with IBM in various sales and marketing management positions. He has a B.S. degree in economics from the University of Minnesota.

The four U.S. Sales areas, Federal Marketing and Canada will now report directly to Frank Keaney.



*Clayton Reed*



*Dick Brown*

## Brown Hired As Director, Dealer Sales

*Richard F. Brown* has been named director, Dealer Sales, reporting to Frank Keaney, vice president, North American Sales.

Dick will establish a dealer network for Data General's DESKTOP GENERATION Model 10 computer system. This will include the placement of dealer marketing representatives in each U.S. sales area to act as consultants and merchandisers for dealers and to serve as a bridge between Data General and its dealers.

Dick, who has been a consultant to Data General in development of the DESKTOP GENERATION retail marketing approach, founded the first retail computer operation in the Eastern United States, The Computer Store Inc. in 1975. As its president, he expanded it to 16 retail stores and a major distribution and corporate accounts subsidiary. Dick has also established wholesale and retail distribution for companies such as Apple Computer, Zenith, Integral Data Systems, NEC and Digital Equipment Corporation.

Prior to his retail accomplishments, Dick was a manager of product development at Digital Equipment Corporation and held executive positions with Control Logic and Sylvania Electronics. He is a graduate of Salem State College with a B.S. in mathematics and education.

## Technical Seminar On ESD Being Held At Woodstock

Field Engineering is sponsoring a one-day seminar on electrostatic discharge (ESD) on Wednesday, September 14 at Data General-Woodstock. The seminar is open to any interested employee, particularly Design, Quality, Manufacturing, Materials and Product Support engineers and Purchasing professionals.

Electronic components, particularly integrated circuits, are easily damaged by handling in an atmosphere where ESD is present. An example of ESD is when you walk across a carpet and reach for a door knob, only to get zapped by a small electrical spark. Depending on what you are doing, that ESD spark may generate several thousand volts.

The seminar will provide the latest techniques, concepts and valuable reference material on managing ESD. Four noted ESD experts, Owen McAteer, Don White, Steve Gullotti and Pete Richman, will lead the seminar. Topics to be covered include:

- Designing boards and systems with enhanced ESD immunity.
- Testing systems for ESD susceptibility.
- Diagnosing ESD failures.
- Controlling ESD in Manufacturing, Field and repair operations.
- ESD field fixes and retrofits.
- Handling and protecting ESD-sensitive material.

The seminar is the first in Field Engineering's "Next Generation Technical Meeting Series," which will provide continuing education to employees and help keep Data General products and services at the forefront of technology.

Sign-ups will be accepted until the date of the seminar. A managers approval is necessary and \$100 per employee will be charged back to the department. For reservations, contact Gayle Holland, Westboro extension 5292.

## Data General Computers End Summer Doldrums

Summer doldrums or rainy days didn't faze the youngsters at the Abington, Connecticut 4-H Camp last week.

More than 30 boys and girls, aged nine through 16, were too busy using Data General MPT computers to care about the weather. Their activities ranged from learning basic computer concepts to loading programs and playing electronic games.

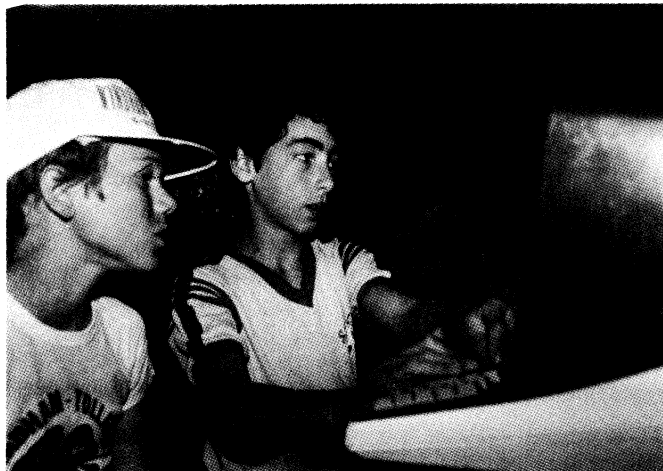
Responding to the camp's request, 10 computers and a printer were loaned for a week and supported by Data General-Woodstock, which is only a few miles away from the 4-H facility.

### Answering The Call



*Nearly 40 Data General employees from Milford, Southboro, Wellesley, Westboro and Woburn were in Boston on Tuesday night to help viewer-sponsored Channel 2 raise funds in pledges to pay for operational expenses. This is the third straight year Data General employees have volunteered their time to answer phones during a WGBH Pledge Night period.*

Field Engineering Education Manager Wayne Cardeiro says Data General Instructor Walker Haddock set up the systems, put together programs and trained the camp's instructor. "It was the first time a few of the kids had ever seen a computer. We were only too happy to help out a neighbor. It worked out really well."



4-H youngsters learn about computing using Data General's MPT computers.

## Technical Employees Learn "Innovation Needs Cooperation"

More than two dozen technical support employees from Data General facilities throughout the country attended the second annual Manufacturing Technical Support Conference, held at Data General-Woodstock last week.

Technical support employees support the software running on computer systems used by employees throughout the company. In addition to Manufacturing MIS groups from Westbrook, Portsmouth, Southboro, Westboro, Clayton, Apex and Austin, technical support employees from Field Engineering at Milford, and from Marketing MIS, Data Systems and Communications (DS&C), Financial Support Systems, Manufacturing Support Planning and Manufacturing Indirect Productivity Systems at Westboro attended the five-day conference.

"The idea is to get all the technical support people in the company together for an information interchange, to discuss concerns and common solutions," says Dick McCluskey, Manufacturing Technical Support manager and conference coordinator.

Building off last year's theme of "Quality Through Standardization and Control," this year's theme was "Innovation Needs Cooperation." Two days were devoted to business meetings and three days to courses on Advanced Operating System/Virtual Storage (AOS/VS) performance and the Comprehensive Electronic Office (CEO) taught by Customer

Education instructors Malcolm Lawson and Phil Young.

Since Manufacturing facilities are converting their computer operations to ECLIPSE MV/Family systems, the AOS/VS course was designed to let them get the best performance from their systems, says Dick.



Customer Education Instructor Malcolm Lawson talks about AOS/VS performance to technical support employees (left to right) Barry Sullivan, Patty Johnson, Susanne Groll and Kevin Ronayne.

## Westboro

### People

**Trey Burns** joins the Systems Development Division as manager of Power and Analog Systems reporting to Don Tocher, director of Advanced Systems.

Trey is responsible for the design and support of power systems, sensor input/output subsystems and EMC (electromagnetic compatibility) tool development.

Prior to Data General, Trey was employed for four years at Digital Equipment Corporation, most recently as manager of Large Systems Power Supply Development. Prior to that, he was manager of Advanced Power Technology. Trey also has been employed by the Electronic Power Systems Laboratory of Bell Laboratories.

Trey has a BA in engineering and applied physics from Harvard University and an MS and PhD in electrical engineering from Duke University.

**Pat Scannell** has been appointed North American Sales Division (NASD) Finance manager providing financial support to that area. He reports to John Gardner, controller of Business and Field Divisions.

Pat joined Data General's Internal Audit department in 1981 as manager of Financial Audits and has directed and participated in a variety of audit assignments both in North America and overseas.

Prior to joining the company, he was employed at Arthur Andersen and Company for six years.

Pat has a BS in accounting from Boston College and is a member of the American Institute of Certified Public Accountants.

**Aline Kaplan** has been named manager of Marketing Communications for the Small Business Systems (SBS) Business Unit responsible for coordinating advertising, public relations and marketing information efforts for the area.

Prior to the appointment in SBS, Aline was the Marketing Communications manager for the Field Engineering Division in Milford. Before coming to Data General, Aline worked at Interactive Data Corporation, which is a subsidiary of Chase Manhattan.

She reports to Jim Ryan, director of SBS Marketing.

**Bob Viator** joins Educational Services as a senior instructional technologist, reporting to Course Development manager Barry Smith.

Bob is currently preparing self-study training materials for DESKTOP GENERATION applications.

Bob previously was a technical writer and writing/editing supervisor for the Small Business Systems (SBS) Business Unit where he most recently produced SBS applications manuals and marketing literature for the DESKTOP GENERATION computer family. Prior to that, Bob worked for the Wall Street Journal and MITRE Corporation.

A graduate of the University of Massachusetts, Bob holds a BA in journalism/English.

Joining the Information Systems Division's Finance department is **John Freeman**. John is involved with financial planning, budgets and administrative issues for various programs in the area. He reports to Controller Bob Banks.

Prior to joining Data General, John worked at GCA Corporation as a Financial Planning manager.

John has a BA and an MBA from the University of Rhode Island.

## Keep It Clean

Employees are reminded of the rules regarding the posting of notices within Data General buildings. This policy has been developed in order to maintain a clean, litter-free work environment.

1. Any item to be posted must be submitted to Personnel for approval.
2. Items will be posted in one or more of the glass enclosed bulletin boards provided for this purpose.
3. Any items posted on walls, in lobbies or in any other public area of the building will be removed.

## DESKTOP GENERATION Lands In Westboro



Westboro employees had an opportunity to see Data General's newest family last week when the DESKTOP GENERATION computers were displayed in the Building 14A cafeteria. On Thursday and Friday seven desktop computers driving 12 terminals ran a host of application software and demo packages for employees to witness the computer's functionality. The exhibit was a part of the one journalists viewed at the products' introduction in New York City last month. Since then it has been shipped to cities across North America for major customers to view.

## Helen Padula Retires Today



Helen Padula, a data entry clerk in Sales Administration, retires today after nearly 11 years of service with Data General. She has been in Sales Administration for the past four years after more than six years as a group leader in the mailroom. Helen has no specific retirement plans, but says she has plenty of things to do. Congratulating her are her manager, Anita Cederholm (left), and supervisor, Cathy Chapman.

## Southboro

### People

Three recent college graduates have joined the Southboro Shop Operations Industrial Engineering department as associate industrial engineers.

**Bill Wing** is a six-year employee of Data General who, prior to becoming an associate engineer, was a verification test technician in Southboro Quality Assurance. Bill graduated this spring from Northeastern University with a BS in industrial management.

**Patricia Roy** comes to company with a BS in industrial engineering from the University of Rhode Island.

Both Bill and Patricia are involved with time and efficiency ratings for Low Volume, Cables and Metal Fab product costings which reflect the amount of time it takes to perform specific production processes and their related costs.

**Mark Morrissey** develops facility layouts and designs. Mark is a graduate of Cornell University with a BS in industrial engineering.

Bill, Patricia and Mark all report to Industrial Engineering Manager Tom Forhan.

### "Together At Last" Theme Of Special Systems Move



*The new Manufacturing area in Special Systems' Building 6 offers expanded capability for Assembly and Test personnel.*

Special Systems is "Together At Last" in its newly-remodeled Building 6 facility in Southboro. The Manufacturing, Assembly and Test areas, formerly in Building 4, have joined the Administration and Marketing areas of the organization which were already situated in Building 6.

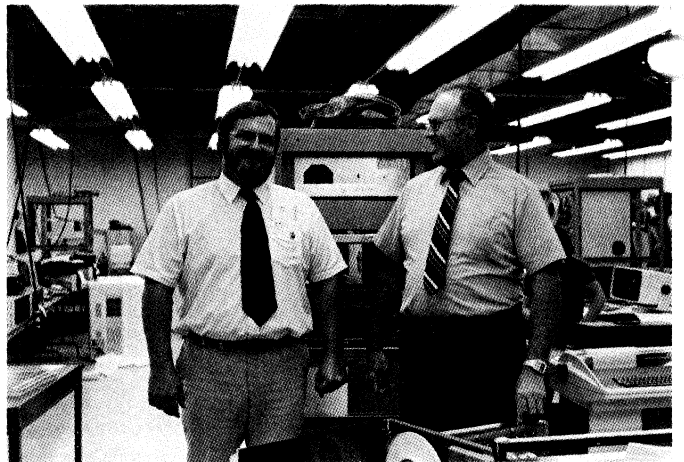
Operations Manager Dick Manion explains that the renovations in Building 6 were quite extensive and provide considerably more floor space than

Special Systems occupied before the move. By working closely with the Southboro Facilities department a plan was developed for restructuring the area.

According to Dick, the layout of the new Manufacturing floor enhances work flow. "The design of the entire building lends itself to efficiency, from the production floor to the loading dock."

Special Systems Engineering also has benefitted from the renovations. The area features an updated engineering lab and a new screen room which is utilized to assure that Special Systems products are compliant with FCC electro-magnetic interference regulations. Engineering Manager Arthur Anderson says, "The area we occupy has been improved and because of it we are more productive."

Dick believes it was very important to bring Special Systems under one roof to strengthen communications between all departments. "Even so," says Dick, "we must work hard to continue the good relationship which we have shared with Southboro's standard product manufacturing organization. Now that our manufacturing operations are not physically located in the same building it is essential to maintain the solid link we have always shared." Special Systems offers customized hardware to Data General computer users. It helps to close a sale when a customer needs something more.



*Dick Manion and Arthur Anderson find that the enhanced Engineering Lab will help to see that Special Systems' products are compliant with FCC regulations.*

### Observe Parking Regulations

Southboro employees should park only in authorized areas. All areas otherwise marked should be kept clear including fire doors, fire lanes and designated handicapped parking areas.

## Activities

### *yo Chances Left --*

#### ***...verside Outing Around The Corner; Crotched Mountain Closes Outing Season***

• Riverside Amusement Park; Saturday, September 10. *Tickets must be purchased no later than Thursday, September 1.* Come ride on the fastest and highest roller coaster in the country! The food is great and the park is clean and exciting. Free admission to the auto races in the evening is part of a day full of fun. The park will open at 9 a.m. for attendees to exclusively enjoy the rides before it opens to the general public at noon. After noon, Data General employees will continue to have exclusive use of 'The Grove' throughout the day. Outing chairpersons: Jacqui Risolo (x2206 in Milford) or Evie Dumas (x5562 in Westboro).

**NOTE:** After September 1 the only tickets available to the park will be for rides only. The ticket cost is \$5 per person. Tickets must be purchased in advance and can be picked up at the gate.

• Crotched Mountain; Saturday, September 24. Visit New Hampshire during fall foliage season. Enjoy hot tubs in the crisp air or swim if the weather permits. There will be bingo and square dancing and a DJ throughout the day for those who like to try a little of everything. Or how about a hayride or an hour-long ride to the top of the mountain? Don't miss out, contact outing chairperson Evie Dumas (x5562 in Westboro) for ticket information.

**NOTE:** Transportation is available. Contact Mike Grniet in Southboro for bus reservations. The cost is \$7.50 per person.

### ***Come On Along!***

***Boston Bruins vs the Philadelphia Flyers, Saturday, September 17 at the Centrum*** Cost: \$8.50 per ticket. Evening (7:30 p.m.) game. Send requests (checks payable to Data General Activities Committee) with a self-addressed stamped envelope to: BRUINS, MS D127.

***Red Sox vs Yankees, September 21*** Evening game. Cost: \$5 per ticket. Seats are located in the left field reserved grandstand (Section 32). Send request for tickets plus payment (Data General Activities Committee) to SOX: MS D127 in Westboro. Include a home-addressed, stamped envelope for direct home mailing. Telephone requests will not be honored.

**NOTE:** Transportation is available. Contact Mike Grniet in Southboro for bus reservations. The cost is \$5.50 per person.

***Disney's Magic Kingdom On Ice, Thursday, October 13 at the Centrum*** Cost: \$7 per ticket. Evening (7:30 p.m.) performance. Send requests (checks

payable to Data General Activities Committee) with a self-addressed stamped envelope to: DISNEY, MS D127.

***Tony Bennett, Sarah Vaughn and Buddie Rich, Wednesday, October 19 at the Centrum.*** Cost: \$13 each. Evening (7:30 p.m.) performance. Send requests (checks payable to Data General Activities Committee) with a self-addressed stamped envelope to: BENNETT, MS D127.

***Helsinki, Finland, November 23-28*** Deadline for deposit is Tuesday, September 23. Tour price is \$699 double occupancy (\$72 single supplement). Includes jet transportation, transfers, accommodations at the Presidentti Hotel, breakfast each morning, sightseeing tour, portorage, taxes and gratuities. Also a tour director will be available to assist you throughout your trip. For more information send a return-addressed envelope (internal mail stop preferred) to: HELSINKI, MS D127.

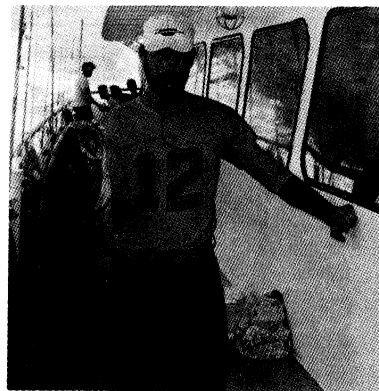
### ***Ski Enthusiasts'***

If you are interested in what's up with the Data General Ski Club send your name, mail stop and location to: Ski Club, MS C223, in return a calendar of events will be sent to you. Suggestions are welcome too!

### ***Discount Movie Tickets***

Discount movie passes are available to Sack Theatres, General Cinemas and Showcase Theatres. Each pass costs \$2.50 and may be picked up from Lori Clancy (x6630) in Westboro, Beth Peduto (x2019) in Milford and Jeri Goulet (x7400) in Southboro.

### ***The Big One That Didn't Get Away***



*Bob Blodgett from Data General-Southboro holds up what turned out to be the largest catch of the day -- a 26 pound cod fish caught during a recent fishing trip to Cashes Ledge by Data General employees.*

## CARPOOL

**Vanpool Driver/Riders**, from Boston/Brookline/Newton area to Webo, free commute for driver, Craig x6942.

## MARKETPLACE

### Free

**Cat**, 3 mos. old, female, tiger, 485-4007 (Marlboro).

### Found

**Bracelet**, call Security x6100.

### For Rent

**Lakefront Cottage**, Suncook Lake, Barnstead, NH, 3 bdr, spec. Sept. rate, \$250/wk, call weekdays, 481-6822 (Southboro).

**Apt**, 4 bdr, appliances incl./semi furnished, deposit & references, \$500/mo. + util, 798-2756 (Worcester).

**Apt**, 3 1/2 rms, appliances, \$300 + util, near Milford center, 473-9256 (Milford).

**Apt**, 1 bdr. in newly renovated Victorian, \$350 h/hw incl., avail. 9/1, 755-1884 (Worcester).

### Wanted

**Chain Saw**, Sachs-Dolmar model #133 or #153, 885-3596 (Spencer).

**Home**, for f/cat, part angora, spaded, has had shots, 339-5204 (Mansfield).

**Roommate**, to share 6 room pvt. home in Milford, \$40/wk. + util, 473-7842 (Milford).

**Roommate**, to share 2 bdr. apt. in Marlboro, avail. 9/1, \$160 + 1/2 util, 881-3112 (Framingham) aft. 8PM.

### For Sale

**Slide Projector**, and 40x40 inch screen, \$75, 764-4067 (Southbridge).

**Woman's Jackets**, leather, sz 14, \$50; black wool w/fur collar \$50, 393-7929 (Northboro).

**Fender Bandmaster**, '67 pre-CBS, covers, \$250, 881-4771 (Framingham).

**Portable Washer**, \$30/BO, 278-3974 (Uxbridge).

**Awnings**, white, retractable, aluminum, 473-1728 (Milford).

**Lounge Chair**, reclines, 473-4347 (Milford).

**Diamond Ring**, 1/3 carat, boarded by 2 sapphires, \$500, 875-7976 (Framingham).

**House**, custom Cape, 8 rms, 2 car garage, 8 acres, \$97,500, 278-5615 (Uxbridge).

**Living Room Set**, Italian Prov., complete or by piece; Doors, wood front door, alum, storm door w/screen & glass, 36x80, 655-3039 (Natick) after 6 pm.

**Yard Sale**, everything must go, moving, 842-6179 (Shrewsbury).

**Hotpoint Refrig.**, frost-free, 16 cu. ft, \$225/BO, 235-1791 (Wellesley) or 527-0160 (Newton).

**Sofa-Bed**, & rocker, \$150; 19 in. B/W TV, \$25, 234-5453 (Whitinsville).

**Dryer**, 7 settings, x-lg. capacity, gold, \$125, call before 3:30 PM, 481-5288 (Marlboro).

**House**, 2 family, Natick, skylights, lg. yard, creative financing avail, 651-2692 (Natick).

**Gravelly Tractor**, snowblower, plow & sulky seat, \$700, 366-0524 (Westboro).

**Whirlpool Washing Machine**, model 4900, 5 cycles, 5 temps, 6 water levels, 12 lb. cap, \$100, 852-3764 (Worcester).

**Single Bed**, 562-7296 (Hudson).

**Countertop Refrigerator**, Sears, 1.7 cu. ft, \$85, 481-1847 (Marlboro).

**Items**, barn beams; windows w/storms; solid interior doors; half louvre sliding closet doors; wooden shutters, 366-4289 (Westboro).

**Truck Tires**, 2 Armstrong 10x16.5 mounted & balanced on 8 lug rims, BO, 234-8451 (Whitinsville).

**Baby Items**, rocking horse, high chair, stroller, BO, 478-6583 (Milford).

### Autos

'64 **BMW R69S**, clean, runs well, \$1850, 698-8228 (Milton).

'66 **GTO**, new body, shocks & ball joints, no engine or transmission, \$450/BO, 881-1871 (Framingham).

'67 **Baracuda**, new tires, mag. wheels, extras, \$2500/BO, 529-6980 (Upton).

'67 **Mercedes 230S**, classic, solid, clean, asking \$2200, 698-8228 (Milton).

'69 **Chevelle Engine**, Super Sport, 307 four barrel, 45K mi, \$150/BO, 881-1871 (Framingham).

'70 **Valliant**, 6 cyl, 4 dr, leather inter, \$800, 473-7543 (Milford).

'70 **Toyota**, needs motor, 473-7543 (Milford).

'71 **Hornet**, needs transmission, 473-7543 (Milford).

'73 **Truck**, runs, 473-7543 (Milford).

'73 **Dodge Pick-Up**, 3/4 T, P/S, P/B, heavy duty bed, \$1100, 244-1573 (Newton).

'73 **Toyota Corona Wagon**, economical, needs muffler, 698-8228 (Milton).

'74 **Chevy Malibu Classic**, 112,000 mi, \$1400/BO, 883-3264 (Milford).

'74 **Chevy Impala**, wagon, needs exhaust, B/O, 485-4292 (Marlboro).

'75 **Pinto Sta. Wgn.**, 2 dr, new brakes & exhaust, radial tires, \$750, 829-3100 (Holden).

'75 **Firebird Formula**, 350, V-8, auto, A/C, chrome rims, \$2000, 485-7222 (Marlboro).

'76 **Fiat 128**, 4-spd, \$500, 875-7976 (Framingham).

'76 **TL125 Honda Trials**, dirt bike, many new parts, \$350, ask for Sean, 473-3161 (Milford).

'77 **Jeep CJ-7**, renegade pkg, 6 cyl, 3 spd, 2 tops, \$3795/BO, 393-7294 (Northboro).

'78 **Ford Fiesta**, 4 spd, AM/FM cassette, new brakes, \$1200, 647-1819 (Waltham).

'79 **Honda Civic**, hatch, 4 spd, 49K mi, new muffler, \$3000, 473-7352 (Milford).

'79 **Toyota Supra**, 5 spd, 6 cyl, loaded, \$6400/BO, 234-5013 (Northbridge).

'79 **Suzuki**, GS1000L, metallic blue/pin stripes, 4K mi, 528-5725 (Franklin).

'80 **Yamaha SR 2506-R**, 1100 mi, \$800, 485-4292 (Marlboro).

'80 **Honda 750K**, low mileage, black w/backrest & cover, \$2000, 366-5508 (Westboro).

'80 **Honda Motorcycle**, 1800 mi, 562-7296 (Hudson).

'80 **Datsun 280ZX**, special anniv. model, GL pkg. w/t-top, loaded, \$9800, 383-9570 (Cohasset).

'80 **Chevette**, 2-dr, hatchback, 4-sp, rw defogger, \$3000, 444-5396 or 366-0211 (Westboro).

'81 **Ford Escort**, AM/FM radio, 2 dr, 32K mi, \$4500, 366-0322 (Westboro).

'81 **750 Kawasaki LTD**, 4900 mi, must sell, \$2000/BO, 393-8272 (Northboro).

'81 **Chevette**, 2 dr, many options, 473-8908 (Milford).

'81 **Kawasaki 440 LTD**, \$800, 798-0185 (Worcester).

'82 **VW Rabbit**, 25K mi, 2 dr, 4 spd, alarm, \$4750, 876-9862 (Somerville).

'82 **Firebird**, 4 cyl, fuel injected, auto, 21K mi, stored for winter, 753-8466 (Worcester).

## MENU

**Westboro Cafeteria**, Monday, Salisbury Steak; Tuesday, Fettuccini Primavera or Liver w/Onions; Wednesday, Mexican Pizza; Thursday, Pot. Skins & Make-Your-Own Veg. Pocket; and Friday, Baked Fish.

**DeeGee's**, Monday, Spin. & Mush. Quich Tuesday, Roast Beef & Cheese Rollups; Wednesday, Ham & Cheese Omelet; Thursday, Steak & Cheese Sand; Friday, Seafood Newburg Crepe.

**Milford**, Monday, Veal Parmesan; Tuesday, Baked Ham; Wednesday, Tacos; Thursday, Quiche; Friday, Fried Clams.

**Southboro**, Monday, Lasagna; Tuesday, Beef Burittos; Wednesday, Chicken Croquettes; Thursday, Corned Beef & Cabbage; Friday, Fried Fish.

All ads must be submitted in writing and include employee's name, home phone and extension number. All ads must be received by 11 a.m. Tuesday morning of the week published. Send to Cynthia Myers, MS A-235.