

# Mini News

## News For The Employees of Data General

---

June 24, 1983

### Five Year Employees Honored This Week

More than 700 Data General employees from Westboro, Southboro, Milford and New England Field offices were honored this week for reaching their fifth year of service with the company.

The employees were cited at luncheon held at the Holiday Inn in Marlboro. In commemoration for their long-term service, they were presented personalized plaques highlighting the events of their first year with Data General.



President Ed de Castro (right) chats with Livingstone Dussey (center) and John Dibenedetto during Southboro's five year service awards luncheon.



It was a five year family affair for Doris and Karen Lepore. Doris works in Special Systems employee and her daughter, Karen, works in Building 5.

### Ada Compiler First Validated

The Data General/ROLM Corporation Ada Compiler is the first to be validated by the United States Department of Defense.

The compiler was validated after Data General's 32-bit ECLIPSE MV/Family systems and ROLM's mil-spec MSE/800 successfully completed more than 1,500 qualification tests.

Validation of the Data General/ROLM compiler means that the Ada programming language can be implemented on commercially available state-of-the-art equipment within the specifications set up by the government.

Ada is the standard programming language, trademarked by the Department of Defense, that should become the single computer language for all branches of the military by 1985. Similar in structure to PASCAL, it is particularly well-suited for real-time applications requiring concurrent processing.

Data General announced on May 3 that it was the only major computer manufacturer to offer a full range

#### **Mini News On Vacation Until July 8**

Data General employees will be enjoying a long Fourth of July weekend this year as Friday, July 1 and Monday July 4 are paid holidays. Time cards for the week ending July 2 will be available for pick up at 10:30 a.m., Wednesday, June 29 and should be returned no later than 4:30 p.m. *the same day*. Paychecks will be distributed at the usual time, at 10:30 a.m., Thursday, June 30.

of Ada software development tools and complete Ada implementation.

Data General's Ada work centers are based on the 32-bit ECLIPSE MV/Family of computers.

Software for the work centers, which can be used to write, test and debug Ada applications is based on the new compiler and the Ada Development Environment (ADE software).

Because the Data General MV/Family systems are fully compatible with ROLM computers, the Ada applications can run on either Data General systems or ROLM ruggedized mil-spec computers.

"Standardizing military programming language is very important to the Department of Defense," says Don McDougall, director of the Technical Products Business Unit. "With Ada, programmers writing radar software for the Army will be able to communicate with their counterparts in other branches of the service. For the first time they will be using the same computer language."

The use of Ada should contribute substantially to reductions in software program costs (the government spends \$2 billion annually just on software maintenance, and allow for the development of more complex applications in less time.

"The initial market for Ada work centers will be organizations that need full Ada capabilities for training software development people," adds Don. "Many other companies will want to work with Ada to learn first hand its effectiveness as a language for defense applications."

Data General and ROLM plan to open customer demonstrations centers in several U.S. cities this summer.

Ada is a registered trademark of the United States Department of Defense.

ROLM is a registered trademark, and ADE is a trademark of ROLM Corporation.

**Shuttle Takes a Breather** Passenger shuttle service between Westboro and Southboro will not be available from Monday, June 27 through Friday, July 8. Normal service will resume Monday, July 11.

## "Extra Time" Offered Again This Year

Data General is offering the "Extra Time" program again this summer, allowing employees to take time off beyond normal vacation.

The program will be offered between now and the end of the fiscal year on September 24. The extra time off without pay may range from one week to the entire period through September 24.

The offer is extended to all U.S. employees, except those in field offices (Sales, Systems and

Field Engineering). Extra time off may be granted by a department manager after consideration of department workloads.

Benefits, seniority and employment status of an employee granted the time off will not be affected.

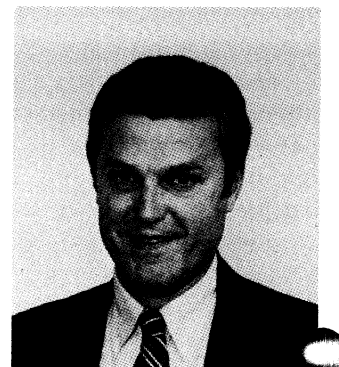
Any employee wishing to apply for "Extra Time" should contact his or her manager for more information.

Data General is making this offer in an effort to meet the requests of employees who have inquired as to whether the program would be repeated. It is possible to do so because of the continued slow order and shipment levels.

## Directors Appointed In Technical Products



Frank Gallo



Sherman Rutherford

Frank Gallo and Sherman Rutherford have been appointed Marketing directors within the Technical Products Business Unit of the General Systems Division.

Frank has been named director of Market Development, responsible for business planning, forecasting, the Industrial Electronics Distribution program, and Field Sales support and communications.

With Data General for more than five years, Frank most recently was a Regional Sales manager in Milwaukee and, prior to that, a District Sales manager. Before joining Data General, Frank was a District Sales manager with North American Phillips Corporation. He holds a BS in economics from Siena College.

As director of Industrial Automation Marketing, Sherman is responsible for defining and selecting markets for Data General's industrial automation products.

Sherman comes to Data General after two years at Calma Corporation where he was director of Industrial Marketing. Before that he was vice president of Business Development at Benson-Varian Corporation. Sherman holds a BS in physics from Oregon State University and an MBA from Pepperdine University.

In these new position Frank and Sherman report to Technical Products Business Unit Director Don McDougall.

## **ANSYS Teams Up With ECLIPSE MV/Family**

Data General's emphasis on the Independent Software Vendor (ISV) program was displayed recently during a conference for ANSYS products in Pittsburgh.

The company, in conjunction with Swanson Analysis Systems, Inc., participated in a four-day seminar, which allowed customers an opportunity to exchange ideas on using ANSYS in various industries.

ANSYS is a general purpose engineering analysis program designed to help solve several classes of heat transfer and structural stress problems. This allows users to predetermine how a part of a structure will behave when subjected to various forces. It also saves the time and money involved in building a test structure as well as ensures that the design is structurally sound and safe prior to building.

Operating on Data General's ECLIPSE MV/8000 computer and DASHER G500, visitors to the Data General booth saw ANSYS analyze the design of various machine tooling parts.

Steve Aucoin, who coordinated Data General's involvement at the conference, says, "The addition of the ANSYS system offers a new market for the company to sell its MV/Family computer systems. ANSYS runs twice as fast on ECLIPSE MV/8000 systems than any other equivalently priced computer on the market."

## **New Loan Rate Begins July 1**

If you apply for a loan from your Savings and Investment plan account on or after July 1, the interest rate will be 17.25%. This new rate will be in effect for all loan applications received by Corporate Benefits between July 1 and October 1 of this year. The interest rate for loan applications received on or after October 1 will be announced in September.

In order to qualify for a loan under the Data General Savings and Investment plan, you must have at least \$500 in your account. You may not have more than one loan outstanding at any time. The minimum amount which you may borrow from your account balance is \$500.

Repayment of the loan (principal plus interest) is made through weekly payroll deductions. The minimum payment is \$10 per week and the loan must be fully repaid within five years.

For more details concerning the plan loan provisions, contact Corporate Benefits in Westboro on extension 4524 or your Personnel representative.

## **Tanglewood Broadcasts Begin On July 8**

Boston Symphony broadcasts from Tanglewood, underwritten by a grant from Data General, begin on the Eastern Public Radio Network on July 8. The concerts will be heard each Friday evening at 9 p.m.; Saturday evening at 2:30 p.m.; and Sunday afternoon at 2:30 p.m.

Additionally, Morning Pro Musica programs will be broadcast live from Tanglewood from Thursday, July 7 through Sunday, July 10.

Stations on which the broadcasts may be heard are: WGBH - Boston (89.7FM); WFCR - Amherst, Mass (88.5FM); WAMC - Albany (90.3FM); WMEH - Bangor, Maine (90.9FM); WMEA - Portland, Maine (90.1FM); WMEM - Presque Isle, Maine (106.1FM); WPPH - Harford/New Haven (90.5FM); WNPR - Norwich, Conn. (89.1FM); WVPS - Burlington, Vt. (107.9FM); WVPR - Windsor, Vt. (89.5FM) and WEVO, Concord, N.H. (89.1FM).

## **Westboro**

## **TENS PRIDE Circle Develops Training Tools**



*TENS PRIDE Circle members who worked to develop training courses are (left to right): Debbie Hixson, Donna Mattson, Mary Anne Pantelopoulos, Teri Borra and Audrey Dutremble. Missing from photo is Patty Gavin.*

Members of the TENS PRIDE Circle at Westboro are extremely interested in training and professional development tools for secretaries and clerks. So, they decided to do something about their interest.

The Circle, made up of secretaries from various departments within the Materials and Manufacturing Services organization, surveyed secretaries and clerks in Manufacturing to determine the areas in which they wanted or needed training. Based on the

responses, the Circle began to research training and service organizations, and developed a training handbook for secretaries and clerks. It has made this document available to other secretaries and clerks within Manufacturing.

As part of their research, Circle members invited speakers from a variety of organizations within Data General, such as Manufacturing Training, Manufacturing Systems Operations and Management and Organizational Development (MOD), to address them on the extent of their services and how these services could be obtained. The Circle collected the forms these organizations use to request their services. The Circle also distributed a survey form it had designed to each of the speakers, to provide additional information about available services. The responses were formalized and included as part of the training manual.

As a result of the Circle's efforts, courses which were planned for the future have received increased priority. Many of the courses recommended by the TENS Circle already have been developed by MOD. In particular, the TENS Circle's research led to the development of courses such as *Professional Development of Secretaries* and *Effective Writing for Secretaries*. These courses and many others have been attended already by most of the members of the TENS Circle.

"We have achieved our goals," says Circle Leader Debbie Hixson. "We have already benefited from the training we were looking for when we started this project. The handbook has been well-received, and we feel that others will be able to benefit from our research and from the new courses. The most important thing that we have done, perhaps, is to raise awareness of the need for training at the secretarial and clerical level."

Following a recent management presentation, Gayle Holland, MOD training specialist, said, "I have already loaned out my copy of the training handbook several times. The members have done a lot of research and coordination and the handbook is already proving to be a valuable tool."

Lou Reagan, Manufacturing Systems Planning manager, comments, "I was extremely impressed with the research done by the Circle and the attention to detail. The project the Circle selected was as appropriate as it was surprising. The interest in and, indeed, the need for training at the clerical and secretarial levels was, to a large extent, below my line of sight. The beauty of the PRIDE Circle process was that it allowed my attention to be redirected.

"I saw an extremely high level of energy focused in a very positive direction," says Lou. "The Circle did not stop at identifying a need but was willing to contribute to the solution. I see the successful completion of this project as an affirmation of the validity of the PRIDE Circle concept."

Recently, the Circle members repeated their presentation for the PRIDE Circle Steering Committee.

Following the presentation, Guy Carter, director of Manufacturing Personnel, said, "The TENS Circle has done a lot of valuable research. I believe that its project has potential benefits beyond the Manufacturing organization. At its request, I have agreed to study the Circle's recommendations, in conjunction with corporate MOD, and to ensure that every organization which might benefit has the opportunity to review it."

## **Blood Drive Scheduled For Westboro Employees**

A Red Cross Blood Drive has been scheduled at Data General-Westboro on Tuesday, July 26 and Wednesday, July 27 from 9 a.m. to 3 p.m. Sign-up for the drive will be on Monday, July 18 and Tuesday, July 19 from 10 a.m. to 2 p.m. in the main cafeteria.

## **REMINDERS**

### ***June Is HEART Month***

During the month of June Data General employees are invited to have their blood pressures checked. The Westboro Health Center will be open daily from 9 a.m. to noon and again from 2 to 4 p.m. for blood pressure readings.

### ***Alarms Will Sound***

The monthly fire alarm test will be conducted on Sunday, June 26 from 8 a.m. to 11 a.m. throughout the Westboro facility.

### ***Call In Copy Key Readings***

Copy key reading should be called in to the Westboro Copy Center on Monday, June 27 and Tuesday, June 28. Call either extension 6141 or extension 6073 with your readings.

### ***Parking***

The parking lots located outside of Lobby A in the front of the building are to be used by visitors only. Employees are asked to use one of the numerous other parking areas surrounding the buildings.

## **Southboro**

## **Data General Ships First ECLIPSE MV / 10000**

Southboro Manufacturing has shipped the first ECLIPSE MV / 10000 computer systems. While Data General employees are aware of the tremendous effort it takes to deliver a product to a customer

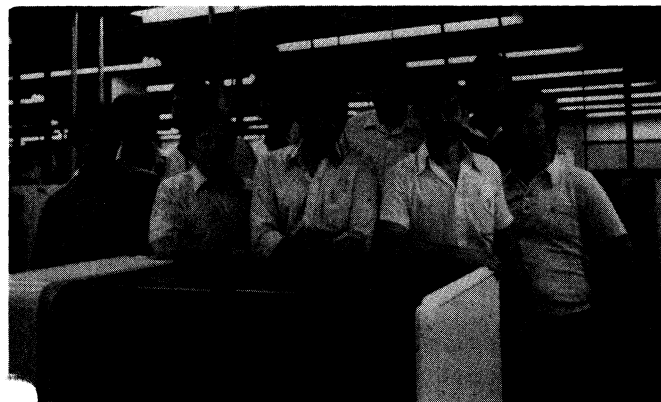
site, even more goes into the planning than meets the eye. When the product is the most advanced offering Data General has made on the market to date, the task is even greater.

Southboro Manufacturing is responsible for system integration of the ECLIPSE MV/10000 computer. The involvement of Southboro employees from various departments began over one year ago. Southboro Project Manager Rick Dunn explains that there was exceptional cooperation between all Data General facilities involved in the development and production of the ECLIPSE MV/10000 systems.

During the year prior to product announcement, weekly meetings were attended by employees from various areas within the company, including Design Assurance Engineering and Design Engineering of Westboro, Field Engineering and employees from Southboro and Portsmouth Manufacturing. Rick states, "These meetings have resulted in excellent decision-making on all aspects of design and production. Important issues were dealt with in an open way. Everyone worked together to insure the success of the product."

One major focus in Southboro was the production of the "sample build." Creating a sample build involves a limited amount of employees in assembling a small number of systems to test out and verify the design. These systems were used for demonstration equipment at the time the ECLIPSE MV/10000 computer was publicly announced. Sample build systems also are utilized in the training of technicians and field engineers.

After the system was announced, however, the work continued and Southboro began to gear up for standard production. Employees from SIO (Systems Integration Operation) Quality, Materials, Cables and Costing as well as employees from many other departments, participated in preparing Southboro to assemble the ECLIPSE MV/10000 system for customer shipments. Configuration rules, test, assembly and inspection procedures all had to be determined to insure a smooth production process.



Major contributors to the first ECLIPSE MV/10000 computer ship are front row: (left to right) Larry Faulkingham, Tom Lucey, Nick Paolillo, Steve Poirier and Bob Nemet; back row (left to right) Mo Connors, Rick Dunn, Bernie Kohler, Dick Ekwall and Mike Boucher.

Bernie Kohler, lead test engineer, has been a key person on this project. According to Bernie, the extensive communication and team work enabled Data General to design, produce and deliver the ECLIPSE MV/10000 computer. He adds, "I think the cooperation between the facilities and co-workers was fantastic during the entire project. Design Engineering and Manufacturing worked very closely together and the result is a high quality state-of-the-art system."

## Frank Lau Begins Manufacturing Tour

Data General-Hong Kong Personnel Manager Frank Lau made Southboro Manufacturing one of his first stops during a tour of Data General facilities in the United States.

Southboro Personnel Manager Paul Smith and Building 5 Employee Relations Representative Pat Fitzgerald provided a comprehensive tour of the Southboro operation, including the SIO (Systems Integration Operation), the Print Shop, the Bindery and the Metal Fabrication areas.

Frank comments on the size and variety of operations which comprise the Southboro plant. Of particular interest to him was the fact that Southboro is Data General's oldest Manufacturing facility. He explains, "Our plant in Hong Kong does not have a prototype shop. The Metal Fabrication area was very interesting as were the other areas I toured."

Frank will visit each Data General U.S. Manufacturing sites. According to Frank this trip has been extremely beneficial. It has given him the chance to meet with corporate Human Resources personnel and the exchange of ideas has been excellent. He adds, "The tour of Southboro was very informative and I am looking forward to visiting the other plants. I appreciate the hospitality Paul Smith and the other Southboro Personnel employees have shown me."



Frank Lau, Hong Kong Personnel Manager (right) visits with Southboro Personnel Manger Paul Smith during a recent visit.

## Milford

### PRIDE Circle Leader Training Held In Milford



Newly-trained PRIDE Circle leaders at Milford are (sitting, left to right): Bettyann Gardner, Tina Metivier, Pam Appell, Debbie Gibson, Eilen Renault, Louise Kantarowski, (standing, left to right) Russell Breault, John Sefakis, Ken Marcou, Rim Mahan, Ken Hubener, Bob Jolda and Facilitator Mary Anne Sannicandro. Missing from photo is Ben Johnson.

Field Engineering Logistics' PRIDE Circle program continues to grow at Milford. Thirteen employees recently participated in a three-day PRIDE Circle leader training seminar led by Facilitator Mary Ann Sannicandro.

Participants received instruction in PRIDE Circle techniques - brainstorming, pareto analysis, cause enumeration diagramming and action planning - designed to solve problems, enhance group interaction and improve communication. Through this training and interaction with other Circle leaders, the participants develop a solid foundation upon which they lead their Circles.

Four people who presently lead Circles, Patti Bartlett, Phil Jodoin, Sharon Michna and Rick Stranieri, spoke with the new group of leaders about their own experiences in leading Circles. They answered question about the nature of projects they have worked on, some of the problems they have encountered and how they solved them. Rick emphasized the importance of "sticking to PRIDE Circle techniques, because that's the best way to break down a problem to a solvable level."

Assisting in the training were Anneliese Vernatter and David Griffin from the corporate PRIDE Circle Administration group at Westboro, and Westboro Facilitator Linda Gordon, who led a session on motivation.

Alberto Pardo, Field Engineering Logistics director and chairman of the PRIDE Circle Steering Committee, addressed the new leaders on the goals

and objectives of Field Engineering Logistics and answered questions the group had about Logistics. It is important for Circles to be aware of the organization's goals in order for them to work toward meeting them.

The training was completed with the awarding of certificates to the participants.

Louise Kantarowski, who will be the back-up leader for the *Costcutters* Circle in Purchasing says, "I really enjoyed the training. The information and discussions were very good. I got a lot out of the training and know it will benefit me in leading a Circle."

## Activities

### Attention Red Sox Fans

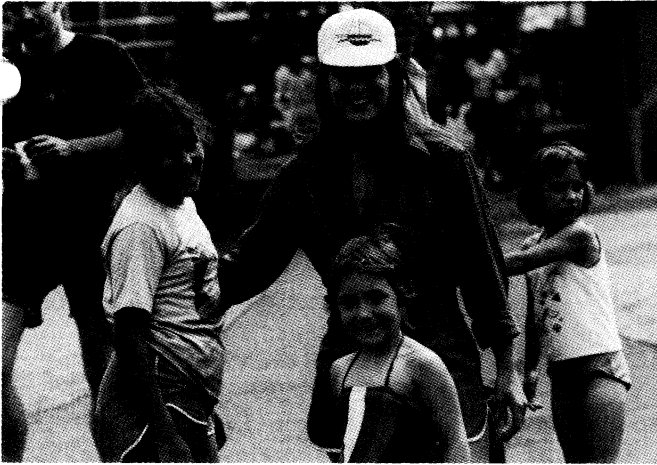
Employees attending tomorrow's Red Sox/Yankee outing to Fenway Park in Boston will be traveling to the game by bus. Busses will depart from the Data General-Southboro parking lot between 11:30 a.m. and 12:45 p.m. If for any reason you are unable to take the bus but still intend on going to the game you must come to the Southboro parking lot on Saturday morning to pick up your tickets for the park. A box luncheon will be provided. Employees not planning to return on the bus please notify the bus monitor in advance. The busses will depart or half hour after the game.

### Family Day Attracts 3000+ To Rocky Point

Data General's second outing of the summer season attracted more than 3,000 people to Rocky Point Park in Warwick Neck, Rhode Island. Ideal weather conditions seemed to bring families out early and encouraged them to stay late. The next outing takes place tomorrow in Boston at Fenway Park.



Cooling Flume rides turned to "cold" Flume rides as evening settled in at Rocky Point.



*Smiling faces were the order of the day during Data General's annual visit to Rocky Point Park.*

### **Red Sox vs Brewers**

Tickets to the July 30 Red Sox afternoon game against the Milwaukee Brewers are available at \$5 per ticket. Seats are located behind home plate in the reserved grandstand. Send your request for tickets with payment (Data General Activities Committee) to SOX, MS D127 in Westboro. Include a home-addressed, stamped envelope so that tickets may be mailed directly to your home.

Tickets will be limited to four per employee and orders may be filled on a random basis depending on response. Telephone requests will not be honored.

### **Cashes Ledge - Final Payment Due**

Employees participating in the Cashes Ledge fishing trip are reminded that their final payment is due. Send checks to: Alan Oberle, MS M-51.

### **River Rafting On The Kennebec River**

A rafting trip down the Kennebec River in Maine has been scheduled for the weekend of September 9 through September 11. The cost is \$152 per person and includes accommodations at the Mountainside Condominiums at Sugarloaf/USA, breakfast, a cook-lunch, a lobster/clambake on Saturday and a buffet brunch on Sunday morning.

Interested employees should send a \$40 deposit to Karen Crandell, MS 5-58 in Southboro. Be sure to include your name, mail stop and extension. For further information contact Debbie Hixson, extension 5003 in Westboro. Flyers will be available in Personnel at each location.

## **Milestones**

The following Data General employees have recently reached their five or 10 year service mark:

### **Westboro**

#### **Five Years**

John Gardner  
David Epstein  
David Dale  
Jane Simoneau  
Robert Meyer Jr.  
Philip Rowlinson  
Frank Melle  
James Hourihan III  
Mark Hecker  
Jerry Breecher  
Dean Polnerow  
Frank Yendriga  
Edward Gove  
Edward Bottum  
Rona Newmark  
Stanford Davis  
Neal Firth  
Mitchell Jerome  
David Keating  
John Fox  
Anne Harrington  
Stefanie Bilowich  
Joseph Armstrong

Jody Crossman  
Arpad Garamy  
Daniel Yip  
Paula Givani  
Douglas Bilton  
Ralph Esterman  
Richard Zygadlo  
Brian Wolcott  
Anne Dolce  
Robert Hayes  
William Gaudet  
Joseph Cox  
Mary Rogers  
William Aten Jr.  
Ronni Sarmanian  
Rivka Higgs  
Kevin Willoughby  
Craig Miller  
John Trytko  
Brenda Chiaravalloti  
Edith Johnston  
John Greska

#### **Ten Years**

Dennis O'Brien

Paul Joseph

### **Southboro**

#### **Five Years**

Autilia Dias  
Judith Salza  
Barbara Tumeinski  
Robert Tarpy  
Gary Mansir  
Ronald Chyko  
Lorraine Eddy  
Patricia Kosiba

David Foran  
Richard Dunn  
Linda Gaudette  
Richard Keeler  
Jose Tavares  
Robert Johnson  
Peter Langlois  
William Allen

#### **Ten Years**

Sharon Girard  
Ronald Cartier

Freda Branowicki

### **Milford**

#### **Five Years**

Kenneth Morton  
Charles White  
Anne Navin  
David Bernier  
Sheila Vincent

Eric Smitt  
Chantal Van Lede  
Paul Sullivan  
Kathleen Simoneau

#### **Ten Years**

James Considine

### **Cambridge**

#### **Five Years**

Kenneth Newell

James Daughtry

## CARPOOL

**Ride**, needed, from Lowell, to Webø, 7:30 - 4, flexible. x5744.

**Ride**, Shrewsbury (East), to DG Webø, 8:30 - 5:00, flexible, 3047 (Westboro).

**Carpool**, Sturbridge/Mass Pike area, to Webø/Sobo, 8:30 - 5, flex, call Donna, 3070 (Westboro).

**Names**, of carpoolers from Duxbury/Pembroke/Plymouth area, needed, 8:30 - 5, flex, call Ed, 6744 (Westboro).

## MARKETPLACE

### Free

**Teddybear Hampsters**, longhair, 6 - 7 wks, m/f, 435-9252 (Hopkinton).

**Free**, Kittens, 5 wks. old, yellow tiger. 744-3712 (Salem)

### Found

**Sunglasses**, x 6100.

### For Rent

**Condo**, 2 bdr, 2 baths, \$550+, call 7/8 - 8/9, 755-0029 (Worcester).

**3 Cottages**, Waterfront, Falmouth, Cape Cod, \$350/wk. 540-3176.

**Cottage**, 2 bdr, lakeview, deck, beach, pool, free use of tennis courts and golf course, Barnstead, NH, \$270/wk, 899-1380.

**Cottage**, efficiency, Dennis, Cape Cod, 473-4347 (Milford).

**Lake House**, sleeps 5, sun deck, 2 prv. beaches, Sunrise Lake, NH. avail. Aug. - Sept. 366-0515 after 4.

**Worc. Apt.**, 1 bdr, newly ren, incl. heat/htw/appl, \$450 mo, 755-1884 (Worcester) eves.

**Condo**, efficiency, East Dennis, wkly, or seasonal, 883-6791 (Bellingham) eves.

### Wanted

**Apt/House**, Bellingham/Franklin, 1 or 2 bdr, will share, ASAP, 731-1673 (Brighton).

**Roommate**, Natick Village apt, 2 bdr, \$260 + elec, A/C, W/W, D/D, pool, tennis, 277-1908.

**Roommate**, Marlboro near Sudbury res, 2 bdr, \$263/mo, incl. ht and ht/wt, 485-0743, (Marlboro).

**Roommate**, Worc. condo, \$275+, begin 8/1, call bet. 7/8 or 8/9, 755-0029 (Worcester).

**Housemate**, rural loc, \$210 + 1/3 utils, 8/1, 485-5839 (Marlboro).

**Singer Machine Table**; to fit singer machine, 729-4333 (Winchester).

### For Sale

**House**, 3 bdr, family and rec. room, \$88,900, Dec. occup, 393-6487, (Northboro).

**'80 Shasta Travel Trailer**, 23 1/2 ft, slps 6, fully equip w/awning, \$5000, 393-7929 (Northboro).

**Red Sox Tkts**, 2 box seats, July 16 aft, \$14 pair, 787-4606 (Boston).

**Wheelhorse Garden Tractor**, older model w/attachments, \$365, 278-6271 (Uxbridge).

**Chain Saw**, 20 in, Stihl model 041, extra chain, \$395, 278-6271 (Uxbridge).

**Cast Iron Sect. Roller**, possible antique, \$85, 278-6271 (Uxbridge).

**Wheelbarrow**, hvy duty steel and pneumatic tire, \$45, 278-6271 (Uxbridge).

**Fiberglass Tub**, 3 piece wall enclosure and dome top w/fixtures + mat. china toilet, \$495, 278-6271 (Uxbridge).

**Dishwasher**, Kitchen Aid, port w/butcherboard top, 278-6271 (Uxbridge).

**Wood Stove**, Allied, w/blower, 366-5124.

**Twnhse Condo**, 3 bdr, w/w, d/d, a.c. pool, mid \$50's, 872-6026 (Framingham).

**Whistler Radar Detector**, \$50. 347-7447 (Sturbridge).

**Comb. Washer/Dryer**, Kenmore, \$650 or best offer, 528-7349 (Franklin).

**Gas Grille**, apt. size, new, \$44.95, 862-4630 (Lexington).

**Membership**, Woman's World, Marlboro, 1yr, frozen, \$150, 384-2240, (Wrentham).

**Items**, coffee table, \$25, yellow deacon's bench, \$15, 481-4140 (Marlboro).

**Garage Sale**, household items, 6/25, 21 Overlook Dr, Westboro, 366-8585.

**Washer/Dryer**, elec, \$250; gas BBQ grill; Early Amer. desk, 842-3606 (Shrewsbury).

**Rifle**, custom built 30/60 bolt action w/12 power scope, \$200, 885-4260 (Spencer).

**Car Seats**, GM, toddler size, 2 avail, \$25 each, 366-9407 (Westboro).

**Items**, kid's steel wheelbarrow, \$20 and 5 ft. aluminum step ladder, \$20, 562-3934 (Hudson) aft. 5.

**Condo**, Windsor Greene, 2 bdrm, delx. twhse, pool, tennis, asking \$69,900, 877-4522 (Framingham) evenings and weekends.

### Autos

**'71 Pontiac Catalina**, engine good, good parts, bent frame, will sell for parts only, 478-4318 aft. 6, (Marlboro).

**'72 Ford Grand Torino**, auto, \$200, 478-4334, (Milford).

**'72 Datsun 510 Sedan**, no rust, \$850 or best offer, 485-7165 (Marlboro).

**'73 Mercury Capri**, V6, sun roof, auto, \$1,350 or best offer, 872-2838 (Framingham)

**'73 Mustang**, auto, 6 cyl, best offer, 481-2122 (Marlboro).

**'74 Plymouth Sattelite Sebring**, PS, PB, A/C, \$500, 476-7756 (Douglas).

**'74 Ford Grand Torino**, 4 dr, auto, PS, PB, 93K mi, \$500 or best offer, 655-3171, (Natick).

**'75 Fiat**, 124 Spider, convertible, \$1600, 429-5713, (Holliston).

**'75 Honda**, CB500T, crash bars, fiamm horns, halogen light, 16K mi, \$600/BO, 366-0539 (Westboro).

**'75 Kawasaki**, F11 250, 3000 mi, \$500, 476-7756 (Douglas).

**'76 Buick Century Coupe**, V6, auto, 2 dr, lt. bl w/wh vinyl top, \$1495, 278-6271 (Uxbridge).

**'77 Camaro**, w/Z28 options, 4sp, 1 owner xtras, \$3200, 756-9208 (Worcester).

**'78 Honda Civic**, 2 dr, AM/FM/tape, radials, A/C, \$2200/BO, 366-0539, (Westboro).

**'78 Camaro**, LT 305, PS/PB, AM/FM cassette, \$3850, 875-6010, (Framingham).

**'78 VW Rabbit**, 4 door, auto, AM/FM radio, 537-1945 (Leominster) after 6.

**'78 Suzuki**, GS1000 EC cafe racer, many xtras, \$2500, 885-4260 (Spencer).

**'79 Honda Prelude**, bl/blk, moonroof, AM/FM, \$4,900, 347-7447 (Sturbridge).

**'80 Dodge Van**, 318 eng, capt. chairs, AM/FM cassette, xtras, best offer, 653-4068 (Natick).

**'80 Kawasaki**, 750 HLTD, 4 cyl, 5500 mi, 2 helmets, bike cover, \$1500, 485-0515 (Marlboro).

**'80 Capri**, 51K mi, AM/FM stereo, 4 cyl, 4 spd, grey, \$2800, 366-7636.

**'80 Kawasaki**, LTD, low miles and extras, \$1,000, 883-1133 (Blackstone).

**'80 Capri**, AM/FM cass/ster, 4 sp, 85K mi, \$2,700, 528-5499 (Norfolk).

**'81 Yamaha**, 650 Special II, low mileage, 752-8269 (Shrewsbury).

**'81 VW Rabbit**, diesel, 38,000 mi, silver w/ red leather int, xtras, 478-4929, \$5,495, (Milford).

**'82 Mercury Lynx**, 4sp, 12,000 mi, xtras still under warranty, \$5795, (203) 872-9207.

## MENU

**Westboro**, Monday, Meatballs and Shells; Tuesday, Mexican Pizza; Wednesday, Chicken Divine; Thursday, Monte Christo Sand; and Friday, Happy Fourth of July!

**Westboro Deli**, Monday, Knockwurst and Pot. Salad; Tuesday, Monte Christo Sand; Wednesday, Lasagna; Thursday, D.G. Burger.

**Milford**, Monday, French Fling; Tuesday, Stuffed Shells; Wednesday, Build-A-Burger; Thursday, Broc. Quiche.