

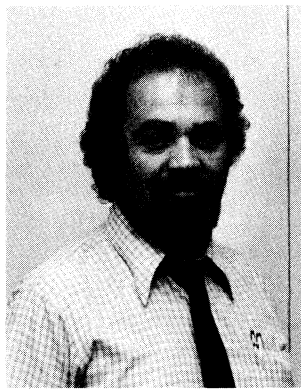
Mini News

News For The Employees of Data General

September 24, 1982



Steven Weingart



Dave Foran

OA Development Group Formed In ISD

Steven Weingart has been named director of a new Office Automation Systems Development group in the Information Systems Division (ISD). In this new position, he reports to Vice President Dave Lyons.

"Office Automation is one of the fastest growth areas in our industry and our company," states Dave. "This new organization will give it the proper management focus and support. We have an excellent opportunity to build our business on the strong product elements such as CEO software which we have already developed."

Reporting to Steve are Bob O'Donoghue, manager of Office Automation Word Processing and John Metzger, manager of Data Management.

Reporting to Dave, in addition to the new department, are ISD Marketing, Software Development, Hardware Development and Marketing Training.

Steve was most recently director, Language Systems and Software Quality Assurance. He joined Data General in 1978 from Sperry Univac and before that was an assistant professor of computer science at the University of Minnesota.

Steve has received his PhD in computer science and masters' degrees at Yale University. He received his bachelor's degree in physics from Queens College.

Dave Foran Appointed Southboro Plant Manager

Dave Foran has been named plant manager, Southboro Operations succeeding Chuck Rawlings, who has resigned to accept a position with another firm. Dave will report to Roy Fortney, general manager, Northeast Manufacturing Operations.

Southboro Operations include Systems Integration, Printed Circuit Board Fabrication, Machining and Metal Fabrication, Print and Media, Low Volume Manufacturing and their support functions.

Dave has most recently been director of Materials and Manufacturing Control within Corporate Manufacturing at Westboro. He joined Data General nearly five years ago as Materials manager at Southboro and later served as materials control manager and operations manager.

Dave was formerly with Raytheon. He received his bachelor's degree from Gordon College in Wenham, Mass. and has done graduate work at the University of New Hampshire.

Who's Who In Corporate Technology

With the recent appointment of Senior Vice President Bob Miller as head of the company's business divisions, the following organizational relationships have developed:

The SYSTEMS ARCHITECTURE group and the SEMICONDUCTOR DIVISION continue to report to Bob Miller.

Systems Architecture, under Director Don Tocher, includes the Westboro-based Distributed Systems Architecture, Power Systems Engineering, Communications, and Computer-Aided Design Tools departments, as well as Advanced Systems at Research Triangle Park.

The Semiconductor Division includes operations at Sunnyvale and Sacramento, California and reports to acting General Manager Ray Abrishami.

PERIPHERALS and ENGINEERING SERVICES AND SUPPORT now report to President Ed de Castro.

Peripherals, under Vice President Jim Barnes, includes peripheral product development in both Westboro and Austin, Texas.

Engineering Services and Support, under Director Peter Hawtrey, includes Mechanical Engineering, Engineering Services, Systems Test and Support, and Publications, all based in Westboro.

Data General Offers Service To Customers

Data General is in the business of making and selling computers. It is also in the business of servicing them. As a company, Data General has teams of field engineers and systems engineers that support customers. But what if they don't need a service visit? What if they only have a question? Who would they call -- Corporate Customer Services, of course.

The Corporate Customer Services (CCS) department provides home office support for Data General's world-wide customer base. It answers customers questions.

CCS interfaces with various departments interacting, initiating or expediting customer requests as quickly as possible.

If you receive a customer question that is not related to your area, refer the call to Corporate Customer Services. CCS representatives may be reached by dialing extension 5880 in Westboro. Make a note of that number. If you cannot help the customer, CCS can!

Software Is The Tool

What is the Software Toolbox? It is a distribution center for internal software to interested Data General employees free of charge.

Currently 34 application programs complete with lists of the documentation and support are available. A wide selection is offered ranging from time accounting to stockroom inventory control to graphic applications programs.

Software Toolbox Coordinators Mary DeMartin and Cheryl Cove of Engineering Services in Westboro have put together the program but still need your help. "We strongly encourage additions to the Toolbox," says Mary. "If you have developed a tool, why not offer it to other users within the company?"

To date, more than 250 employees have taken advantage of the various packages listed in the Software Toolbox. If your department is developing a tool or is in need of a particular application program contact Mary or Cheryl on extensions 6441 or 6421.

Computer Museum Offers Pioneer Lecture Series

Employees are welcome to attend the Pioneer Lecture Series at the Computer Museum in Marlboro. This series of three lectures features major pioneers in the field of computing.

- On Thursday, October 7 at 5 p.m. Derek Lehmer will discuss the "History of the Sieve Machines" (devices which aided in solving certain equations using principles of number theory) from 1926 to the mid fifties. Three complete sieves and plans for his 1926 bicycle-chain machine have been donated to the Museum. The evening will commemorate the opening of the exhibition.

- On Thursday, October 21 at 5 p.m. Herbert Grosch will discuss "The Watson Scientific Laboratory - 1940-50." This lecture will provide a narrative of the development of the Columbia Laboratories up to the time of NORC.

- On Thursday, November 18 at 5 p.m. Harry Huskey will speak on the topic "From Pilot Ace To G-15." His lecture will provide a chronicle of the evolution from single laboratory to commercial computers. As a Fulbright scholar, Harry spurred the building of the Pilot ACE at Britain's National Physical Laboratory. Returning to the U.S., he was the chief designer of the SWAC and the Bendix G-15.

The non-profit Computer Museum is dedicated to preserving and exhibiting an industry-wide collection of the history of information processing. On display in the Museum's Four Computer Generations Gallery is one of the first NOVA central processing units. Also exhibited are the original advertising photographs and engineering drawings. The exhibit is a recent gift from Data General.

The Computer Museum is open Sunday through Friday from 1 to 6 p.m. There is no charge for admission.

SNA Product Emulates Batch Processing

The Information Systems Division (ISD) has added SNA/RJE to its family of DG/SNA products. SNA/RJE lets users of ECLIPSE systems transfer files to and from an IBM host. Users can submit programs to an IBM host computer for processing or collect data from files from ECLIPSE systems. This feature lets an ECLIPSE system running DG/SNA gather several files from other ECLIPSE systems in the XODIAC network and send them as one transmission, rather than separately, to an IBM host.

Other members of the DG/SNA family include: DG/SDLC, DG/SNA itself and SNA 3270.

Westboro News

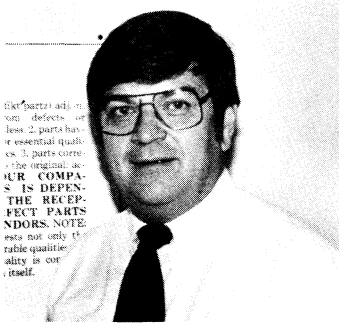
People

In Technical Products (TPD) . . .

Kenneth Ravitz joins Small Systems Software (SSS) Language Development group working on FORTRAN 77 and PASCAL compilers and language runtime environments.

Ken has a BA in computer science from Brandeis University. He reports to Manger David Reese.

Chuck Enright Appointed PRIDE Circle Chairman



Chuck Enright, director of Corporate Purchasing, has been appointed the new chairman of the Westboro PRIDE Circle Steering Committee. He succeeds Vice President Fred Cochrane who has accepted a new assignment with Field Engineering.

Chuck has been an active member of the Westboro Steering Committee since the inception of the PRIDE Circle program. In addition, he has been a strong supporter in promoting two PRIDE Circles that are operating within the Corporate Purchasing department.

Purchasing PRIDE Circle Makes Winning Presentation

One of the two Purchasing PRIDE Circles recently made a successful presentation to department managers, getting the go-ahead to install floor plan layouts and employee nameplates for all department personnel.

"Everyone played a part in the problem resolution and presentation," says Circle Leader Hank Luke. "I am really pleased."

The Circle feels the floor plan layouts and employee nameplates, scheduled to be installed in October, will help the many visitors to the department locate employees more quickly. In addition, they will help

foster a feeling of professionalism and personal identity among Purchasing employees.

The Circle was formed last March and since then held more than 20 meetings, with the majority devoted to applying PRIDE Circle problem-solving techniques. Using these techniques, the members narrowed their choice of a first project from 35 topics to 10 and then to the final choice.

Hank says the two floor plan layouts will utilize a computer - aided - design / computer - aided-manufacturing (CAD/CAM) system and can be easily updated. They will be mounted under plexiglass at each entrance to the department.

Besides Hank, there are nine other Circle members representing three different areas within Purchasing: Sub-contract Purchasing, Commodity Purchasing and Procurement Engineering. Each member presented part of the Circle's overall presentation.

Hank gave the introduction and justification for the Circle's project. Dennis Adams discussed the materials to be used and Bob Consiglio told where the floor plan layouts would be located and further discussed the Circle's proposal for the CAD/CAM layout identification.

Sue Faneuf and Dave Hewitt discussed the floor plan layout and LuAnn Stanley went over the Circle's proposal and cost analysis for the nameplates. Giving an overview of the proposed procedure were Bob Goodman, Brenda Boucher and Carol Cosetta. Hank then summarized the proposal and gave the concluding remarks.

"I was very pleased with the efforts of each Circle member," says Purchasing Director Chuck Enright. "Their proposal was approved in its entirety because it made sense. It's rewarding to see department employees working together toward a common goal."



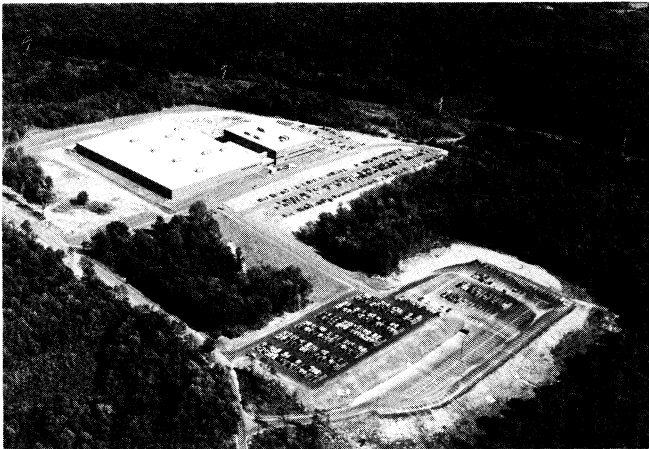
Circle Leader Hank Luke (standing) begins the Purchasing PRIDE Circle's presentation to department managers while member Bob Consiglio (left) and Dennis Adams listen.



Circle members (left to right) Sue Faneuf, LuAnn Stanley, Dave Hewitt, Carol Cosetta, Brenda Boucher, Bob Goodman and Bob Consiglio watch part of the presentation.

Milford News

Tomorrow Marks Milford Open House Celebration



"We're Up And Running" is the theme for Data General-Milford's first employee Open House. Pictured is an aerial view of the Milford facility which has been occupied by employees since February of this year.

"4,3,2,1..." And the "blast-off" part of the countdown for Data General-Milford's first Field Engineering Open House will happen tomorrow, Saturday, September 25, from 11 a.m. to 3 p.m.

"We're Up and Running" is the theme for this exciting event which will feature informative tours of the three-story, 257,000-square-foot facility, home of the East Coast Product Repair and Logistics center, worldwide parts distribution center and administrative offices. Video games, films, clowns painting faces, a Coke robot, refreshments, and more will be on hand along with Milford employees as tour guides to join in the festivities.

This is Data General-Milford's first opportunity to show off the new Field Engineering facility to

employees and their families. Field Engineering employees began their move to Milford from the Logistics area in Framingham and offices in Westboro last February.

Tomorrow promises to be a great day of learning and fun for Data General-Milford employees and their families!

Purchasing Circle Extends Hours



Members of the Costcutters Quality Circle are (first row, left to right): Lisa Frieswyk, Pat Bartlett, and Besty West. Standing (left to right) are: Louise Kantarowski, Gary Johnson, Ellen Gallagher and Hope Ann Ruggiero.

Over the summer months, the Field Engineering Purchasing department in Milford has made a significant change. Thanks to the creative thinking of the "Costcutters," Purchasing's quality circle, a proposal to extend the department's hours was implemented. Purchasing now operates for an additional hour and a half each day. This provides improved coverage for all Field Engineering departments, and is especially helpful for overseas offices.

The added coverage was made possible through a schedule change. Previously, all Purchasing employees started work at 8:30 a.m. Now, on a rotating basis, some employees start work at 7 a.m. and finish at 3:30 p.m. All employees agreed to share the responsibility for early morning coverage.

Circle Leader Pat Bartlett says, "There was an overall improvement in department functioning and a boost in morale. This proposal was beneficial to both the company and the employees."

Milford Blood Drive Has High Turnout

One hundred and twenty-two employees recently donated blood at the first Red Cross blood drive

held at Data General-Milford. "This was a great response right before the Labor Day weekend," says Red Cross Field Representative Mary McGann. According to Mary, blood donated on September 2 and September 3 went to area hospitals to help fortify blood supplies before the last long weekend of the summer.

Special thanks to:

- | | | |
|------------------|------------------|-----------------|
| David Alexander | Jay Appell | Pam Appell |
| Bob Atwater | Allen Ayotte | Steve Bailey |
| Kathleen Baker | Sandra Baker | Ken Barsano |
| Lynne Bent | Chris Belloli | Jeff Bonina |
| Bob Buchlister | John Bavano | Laura Bavano |
| Russ Bedard | Kathryn Bibbo | Mike Bondi |
| Carole Boutiette | Charles Boykins | Jim Boyle |
| Sue Cadrin | George Chevelier | Bob Christie |
| Ron Cook | Bob Conte | Mary Correa |
| Jean Cox | David Crocker | Frank Curtesa |
| Gene Corndon | Sue Contu | Janet Curley |
| Bob DeForest | Tony Delosa | Barry Davis |
| Lori Doyle | Dave Eisan | Marilyn Ellis |
| Colleen Feen | Carl Fuller | Cynthia Feltch |
| George Ferguson | Virginia Foley | Donna French |
| Lisa Frieswyk | John Gilbertson | Phillip Griffin |
| Heidi Groemmer | Bill Gildea | Kevin Gilgallon |
| Purcell Givens | Paul Goguen | Dave Golden |
| Wayne Hubener | Leonard Hyman | Dawn Jacques |
| Bob Jolda | Phil Jodoin | Gary Johnson |
| Greg Keith | Tom Kelly | Mike Kennelly |
| Lisa Kenshau | Lauri Kingdon | Charles Koser |
| Walter Kayawa | George King | Cheryl Lewis |
| Paul Lewko | Allan Lancot | Bob Lee |
| Ann-Marie Leier | Mary Lewis | Doreen Lipka |
| Rich Lovejoy | Phil McKenna | Denie Meyers |
| Brian Miller | Peter Morelli | Tim Mahan |
| Frank Mantino | Jim McNealy | Lee Miller |
| Gary Moran | Mike Mills | Hugh Neale |
| Greg Nash | Ann Nashswaty | Paula Nedder |
| John Nicholas | Rich Nichols | Cindy Nork |
| Lucille O'Day | Michelle O'Neil | Patricia O'Neil |
| Vince Proto | Vince Patterson | Beth Peduto |
| Gary Pekissier | Marcia Perlina | Larry Prior |
| Joe Ptaszynski | Paul Randor | Dave Roy |
| John Ruggiero | Don Scott | Mike Shambra |
| Dan Sklut | Terry Smith | Dan Spulecki |
| Bob Sullivan | Ed Sussek | Gary Swindon |
| Harriet Swindon | Diane Sagerian | Patricia Scott |
| Nancy Sensenig | Stan Setterland | Phil Shea |
| Frank Silkman | Ron Sironea | Francis Small |
| Kathleen Smith | Peter Staub | Chris Stnug |
| Dennis Symanski | Linda Tamulis | Diane Tetrault |
| Bill Tetrault | Sue Trotta | Delores Tucker |
| Jim Urban | Paul Vallee | Clifford Warner |
| Mauri Williams | Linda Walsh | John Ward |
| Bruce Young | Pat Yodice | |

Milford Blood Donor Wins Theatre Tickets



Bob Conte (left) receives certificates good for two tickets to "Shear Madness" from Field Engineering Logistics Personnel Manager Barry Davis. Bob's name was picked from a pool of the Data General-Milford employees who participated in a recent blood drive. He is an associate industrial engineer in Field Engineering Logistics Manufacturing Engineering.

Activities Committee News

Sounds Good

The Data General Big Band is setting up its fall rehearsal schedule in preparation for the Data General Holiday Ball. New members are invited to join by calling Doug Fristoe in Milford at extension 2154.

The Data General Big Band is made up of trombones, trumpets, saxophones and percussion instruments. It is available for Data General functions and for private parties. Music ranges from the swing era through the sounds of the 80s.

Delightful, Delicious, D'Lovely!

Discount tickets to COLE, a musical based on the words and music of Cole Porter, are available for the Saturday, October 2, 9 p.m. performance at the Charles Playhouse. Tickets are \$16.75 each. Send name, self addressed stamped envelope and the number of tickets needed to COLE, MS D127. Tickets will be mailed directly to your home.

Tickets To Black Eagle And Nutcracker

Tickets are available to two upcoming performances at the Cultural Center at Data General-Woodstock.

The New Black Eagle Jazz Band performs on Saturday evening, October 16, at 8 p.m. Ticket cost is \$6.50 per person.

What's That Number?

Effective Monday, September 27 all telephone extension numbers at the Data General-Westbrook, Maine facility will change. In most cases, precede the existing number with a 4. For further assistance call the Westbrook operator.

The Nutcracker, produced by the Nutmeg Ballet Company, is a holiday special on Saturday, December 4, at 7 p.m. Tickets are \$6.50 for adults and \$3 for children.

Tickets are available from Rita Fristoe, extension 4712, MS A235 in Westboro.

It's A Date

The 2nd Annual Winter Ball has been scheduled for Friday, December 3 at the Marriott in Worcester. If you are interested in joining the planning committee contact Pete Faford on extension 6776 in Westboro.

Speaking Of The Holidays . . .

A three-day Christmas shopping spree to Montreal, Canada has been scheduled for Friday, November 26 (the day after Thanksgiving) through Sunday, November 28. The cost is \$139 per person, double occupancy. It includes round trip motorcoach, accommodations at the deluxe Sheraton Center which is located in the heart of the city, a night out at the Old Munich Restaurant including meal, entertainment and beverages and all the shopping you can fit into two days. The cost also includes tax, tips and portorage.

The bus is scheduled to leave the Data General-Westboro parking lot at 7 a.m. on Friday. Wine and snacks will be served on the way up. Arrival in Montreal will be at 2 p.m. The return trip to Westboro will leave Montreal at 1 p.m. on Sunday. Brochures are available at all locations in the Personnel department or write MS D127 in Westboro.

Mini-Cruise To Nova Scotia

A 22-hour, round-trip cruise from Portland, Maine to Yarmouth, Nova Scotia has been scheduled for the weekend of October 16. The price is \$59.50 for a semi-private stateroom and \$69.50 for a private stateroom. Price includes a welcome aboard reception and a deluxe buffet breakfast and dinner. Round trip bus accommodations are available for an additional \$20 per person. For further information, brochures are available at each location in the Personnel department or write MS D127 in Westboro. Act quickly, time is short and space is limited.

New Movie Ticket Discount

Discount tickets are now available to Showcase Cinemas. Tickets are \$2.50 each and are good for any performance. Tickets are available from Beth Peduto in Milford, Ellen Archambeult in Southboro and Trish Dasilva in Westboro.

Let's Get Personal!

Do you have a PET? How about an APPLE or a TRS-80? A Data General Personal Computer Club is

organizing but your help is needed. If you own a personal computer or are interested in finding out more about them send your name, extension, department name and mail stop to Lynne Rogers at MS C223 in Westboro. All are welcome. Join us, we don't byte!

Employee Discount

Nautilus of Medway is offering Data General employees membership discounts. For further information contact Larry Kray, extension 4962 in Westboro.

Walleyball Ready For New Season

The Data General Walleyball League is currently organizing for the '82/'83 season. Interested employees should contact Lynn Story at extension 7235 or Tom Francis at extension 7487 in Southboro. Team rosters will be required by September 24. Volunteers are needed to help coordinate this year's league. If interested call Lynn or Tom immediately.

Softball Corner

And The Winner Is.. F.E.D.S beats Engineering Software On The Brink

The Data General Softball League has a new champion in the Competitive League as F.E.D.S beat defending champions Engineering in four games to complete their Cinderella season. After going 12-4 to win the 'B' Division in the regular season, F.E.D.S posted a 7-1 post season record to take it all away from Engineering. Engineering posted a 15-1 regular season record along with a 5-3 post season record. Overall Engineering had the better record (20-4 vs. 19-5) but F.E.D.S won when it counted most.

After winning game one 10-7, F.E.D.S. was beaten thoroughly 11-5 in game two as Engineering's bats woke up. The Engineering rally was short lived as the F.E.D.S came thundering back in game three, 10-3 to put Engineering's back up against the wall. In game four, both teams were very cautious at the plate, as the final score of 3-1 would indicate. The game was lost in the third inning as a two out error opened the door for F.E.D.S. to score two runs. Engineering couldn't come back as they stranded a number of runners on the bases in the late innings.

In the Recreational League finals, Software is on the brink of bringing home their first championship after being shut out the last two years by F.E.M.I.S. In game number one, Software won a close game as Marketing tried to rally late in the game but came up short, 8-6. In game two Marketing had the chance to pull it out in the 7th inning trailing 5-4. With the bases loaded and two outs, the final batter flied to left field to give Software a 2-0 game edge. Game

number three was scheduled for yesterday with names four and five scheduled for next Monday and Tuesday at 5 p.m. at the Bronx Lounge, if necessary.

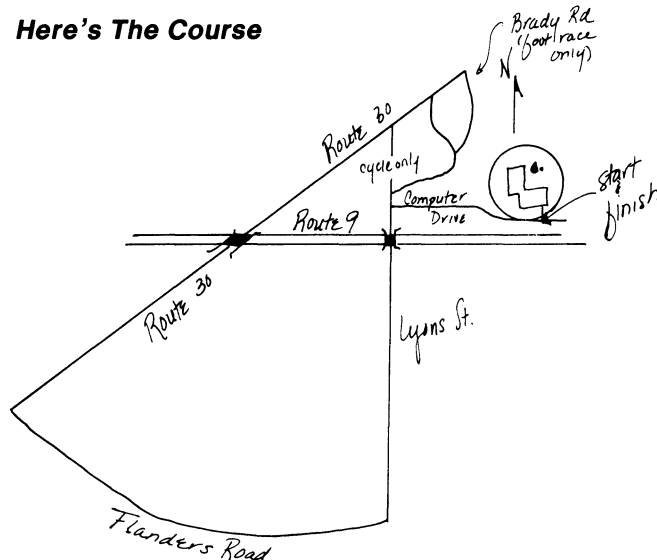
Fall Road Race Just Round The Corner

**Be A Data General Dasher
On Friday, October 1**

Improve your course record or establish a new one by entering the Fall Road Race. Once again, there will be a 13-mile bike race and a 6.2-mile and a 3-mile foot race covering the same course as last Spring's race.

All employees interested in participating in the Fall Road Race must complete an entry form no later than Wednesday, September 29. Participants will be able to pick up numbers and race information in the Westboro cafeteria beginning Wednesday, September 29 through Friday, October 1.

Here's The Course



Volunteers are needed to mark the course and act as marshalls. Also, representatives are needed at Data General-Southboro and Data General-Milford to help coordinate pre-registration. Employees interested in joining the race committee or volunteering for race day should contact John Foley, extension 4878 (MS B139) in Westboro.

AMP To Visit October 5

AMP's Trade Show On Wheels will visit Data General-Westboro on Tuesday, October 5 from 8:30 a.m. to 1 p.m. The displays features state-of-the-art advances in electronic interconnection products, and many ideas on increasing productivity. AMP's Trade Show On Wheels will be located in the 14B parking lot.

Milestones

Congratulations to the Data General employees reaching five and 10 years of service.

WESTBORO

Five Years

Cindy McKinnon
Richard Stone
Heather Clayton
Thomas Casey
Deborah Lomard
William Andreas
Thomas Andresen
Richard Corsi
William Kelleher
Marsha Dibbern
Nancy Bowen
Angie Blodgett
Herbert Terhune
Mary Demartin
Anna Typrowicz
Karen Ehrens
Mary Lewis
Thomas Eck
Susan Blanchette
Barbara Laughton
Ralph Welsch
Robert Wall
David Gates
Brian Hickey
Charles Marsden
James Hananowicz
David White
Lorraine Meyer
Edward Simisky
Dennis Duprey

Ten Years

Robert Lange
Irene Welton
Michael Baio
Thomas Gardner
Sandra Keegan
George McClelland

CAMBRIDGE

Five Year

Barbara DeLuca

SOUTHBORO

Five Year

Dorothy West
Carlos Moura
Paul Rice
Nicoletta Sasso
Nancy Mellow
William Hickey
Ruth O'Connor
John Tebo
Larry Walker
Thomas Watterson
Marion King
Steven Jablonski
Patricia Paoletti
Robert Fournier
Maria Rodrigues
Luis Chaves
Nancy Jones
Maria Martins
Ann Marcy
Edith Bileau
Anthony Nardi
Karen Julian
William Ketchen
Joao Moura
Howard Berg
William Lerette
Kevin Marshall
Warren White

Ten Year

Karola Cone
Robert DeJordy
Juvenalia Figueiredo
Wayne Berthiaume

MILFORD

Five Year

Ramesh Bajaj
Maria Resendes
Charles Walker
Barry Davis
Richard Mayne