

# Mini News

## News For The Employees of Data General

---

June 19, 1987

### Benefits Enrollment Ends Today

Today is the deadline for submitting all benefits enrollment forms to your Human Resources department. Any employee who does not enroll or fails to complete a section of the new Benefit Enrollment Form will have the following benefit coverages as of July 1, 1987:

**Medical:**

Benefits Plus 3 individual coverage only, since Data General cannot deduct pre-tax contributions for the other coverages without your authorization.

**Dental:**

PruDent individual coverage only, since family coverage requires a listing of all covered dependents.

**Life:**

Any currently authorized life insurance coverage will be continued.

Due to government regulations, you will not be able to change your enrollment until January 1, 1988, so it is important that you select the coverage that best meets your needs and complete the necessary enrollment forms by today.

Any questions should be directed to your Human Resources representative.

### Federal Systems Division Announces New Products

Data General's Federal Systems Division (FSD) announced the computer industry's most powerful Tempest and Rugged computer systems this week at AFCEA-East, the largest military equipment electronics show of the year which was held in Washington, D.C.

The new ECLIPSE MV/15000T (Tempest) and ECLIPSE MV/15000R (Rugged) series are capable of processing more than six million instructions per second (MIPS) with their most powerful versions.

Based on Data General's ECLIPSE MV/15000 computer series, the Tempest and the Rugged series are made up of three models, the Model 8, Model 10 and Model 20.

"The new ECLIPSE MV/15000T and ECLIPSE MV/15000R systems establish new standards for cost-effectiveness, upgradeability and installation for federal government and military users," says Larry Holswade, FSD's vice president.

"Upgrades from one system to another, even in the field, can be done easily in a matter of moments," Larry says. "All it takes is the simple replacement of one processor board and reloading of model-specific micro-coded instructions.

"Because the systems are fully compatible, the software that was used in one model can still be used in the others, as upgrades are made. Thus users within the federal government and military users can increase the performance of their systems while protecting their investment in hardware and software."

John Williams, director of Product Development within FSD, emphasizes that these systems could be used for a number of applications, and are not limited to use in military environments.

"The Tempest and Rugged systems are suitable in any environment," John says. "These systems can be used in industrial plants, geophysical studies, and oil exploration, as well as any other rugged, harsh environment. The Tempest and Rugged computers can be used for Defense Department applications, and can be placed on trucks, ships and airplanes."

The key to the success of these systems, according to Larry, is that the ECLIPSE MV/15000T and the ECLIPSE MV/15000R series are the only systems in the computer industry which can be upgraded in the field for both secure and rugged environments.

"We can take advantage of the reliability, design and manufacture of the commercial product, and by swapping standard boards, we provide immediate upgrades," Larry says.

Along with the new Tempest and Rugged computer systems, Data General also introduced a new Tempest terminal, the D461T; a 234 MB removable disk subsystem; fiber optics communications capabilities for the new systems and an agreement with Mitek to jointly market the San Diego firm's Tempest-qualified laser printer.

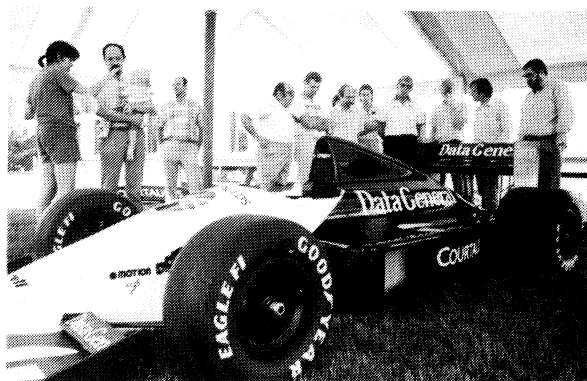
The central processors (CPU) for the Tempest and Rugged ECLIPSE MV/15000 systems are built on two 15-square-inch printed circuit boards. The new system can store up to 32 million characters in main memory.

All three models of the ECLIPSE MV/15000R series are available in standard 19-inch rack-mounted chassis. Both the Rugged and Tempest series offer the new removable disk subsystem, providing users with greater security, portability and data protection.

A variety of software is available, including operating systems such as AOS/VS, AOS/RT32, and DG/UX, a standard UNIX operating system.

Prices for the systems, which offer performance from 2.9 MIPS to 6.4 MIPS, range from \$177,000 to \$299,000 for the Tempest series and from \$117,000 to \$284,000 for the Rugged series.

### Team Tyrrell Comes To Westboro



The Data General Team Tyrrell Formula 1 race car was in Westboro this week, as the car and crew made a pit stop on the way to Detroit for the Detroit Grand Prix. Ken Tyrrell, founder of the racing syndicate, was on hand, as were Tyrrell drivers Philippe Streiff and Jonathan Palmer, and Nigel Beresford, who designed the car. Employees were given an opportunity to view the car, and ask the team questions. Later in the afternoon, the team, along with Ray Fortune, senior vice president of International Marketing and Sales, discussed Data General's relationship with Team Tyrrell.

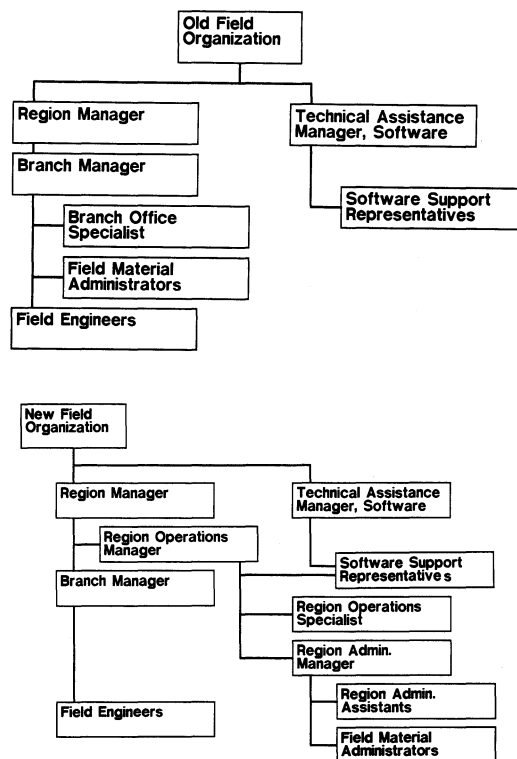
## Aetna Purchases ECLIPSE MV / 20000 Computer

Aetna -- We're glad we met ya'.

Aetna Life and Casualty Company has purchased an ECLIPSE MV/20000 Model 2 computer, CEO comprehensive electronic office software and associated peripherals valued at \$1.6 million.

The Hartford, Connecticut-based company will use the computer as part of an electronic publishing system which its Employee Benefits Division uses to produce manuals and brochures.

The sale of the ECLIPSE MV/20000 Model 2 computer came about after Aetna purchased a typesetting system offered by Penta, a Data General original equipment manufacturer (OEM). Since the Penta system is based on a Data General computer, CEO documents produced on the ECLIPSE MV/20000 Model 2 computer can be electronically updated and then mailed to the Penta system for typesetting. Aetna expects this electronic publishing system to save it both time and money in producing manuals.



The above two organizational charts represent the old and new structures of the Field Engineering regional and branch staffs.

## Field Engineering Restructure Is Well Underway

The North American Field Engineering division is in the process of implementing a new organizational structure that allows for increased customer contact, relieves the branch manager of many administrative tasks and provides for greater career opportunities for employees in the field offices.

From the findings of a task force established two years ago, it was discovered that the branch manager was spending a great deal of time on administrative activities, and was unable to devote as much time as desired with both the customers and the field engineers. A new structure, focusing on the role of the branch manager and an expanded region staff, is now underway.

### Increased Customer Contact

According to Troy Taylor, director of Plans and Controls within North American Field Engineering, the

new program has been established in order to meet the needs of the future.

"Through the findings of the task force, we knew we wanted to increase Data General's involvement with customers and increase the relationship between the branch manager, the field employee, and our customers. To do this, three things had to take place.

"First, we had to establish a business unit at the regional level," Troy says. "Secondly, we also saw the need to relieve the branch manager and field engineer of their administrative workload. These changes would in turn bring about the third objective, that being a keener focus of the branch managers on both the customer and employee."

### ***Change In Responsibilities***

Through the restructure program, many positions in the present structure will take on different responsibilities. Previously, the branch manager had been responsible for a variety of activities, overseeing human relations, customer satisfaction and operational performance for the branch. Now, the branch manager is primarily responsible for seeing to it that customer needs are quickly and properly met and that field engineers receive an increased number of performance evaluations.

This change is possible due to newly-created positions at the regional level. The region operations manager, the region operations specialist, and the region administration manager positions have all been created through the new restructure plan. These positions will take over many of the administrative duties which the branch manager previously had been responsible for, freeing him or her up for greater customer contact and increased employee interaction.

"The administrative duties are now consolidated within the region," says Fred Wightman, national manager for Restructure Implementation. "While the reporting relationships have changed, responsibilities are now more evenly balanced in the new structure. The new structure encourages a feeling of partnership between the branch manager, the field engineers and Data General's customers."

The region operations manager will take on many of the branch manager's functions, including software support utilization, installation planning, contract administration, technical training and territory assignment. The person in this position reports to the Field Engineering region manager.

### ***Increased Opportunities***

While the new structure affords greater customer contact, it also will bring about greater career opportunities for employees in field offices. According to Fred, there are 19 regions in the United States, each with newly-created positions which are being filled by existing employees. These employees have used the Employee Development Program to prepare themselves for greater responsibilities.

"This organizational change is positive for everyone," Troy says. "Our customers view the increased visibility of Data General managers as an extremely positive step, and our employees see additional responsibilities and expanded career opportunities. At the same time, the new structure affords the Field Engineering Division the benefit of improved efficiency and effectiveness through improved managerial focus.

"With this organization the division will be better prepared to manage change and to implement key division programs necessary to meet the challenges of the future."

## **Proof of Employment Eligibility Now Required in U.S. Companies**

People hired in all but the smallest of companies since November 6, 1986 are now required to prove that they are eligible to work in the United States. The new federal immigration law, for the first time, puts the burden on employers to assure that workers are either citizens of the United States or have work authorization. It will now become common practice among U.S. companies to ask new employees to produce documents to Human Resources representatives during the hiring process or within the first few days of employment.

While the law is designed to control the influx of aliens into the U.S. work force, its provisions affect most everyone who changed employers after November 6 of last year. At Data General and elsewhere, employers are now required to verify employment eligibility of all newly-hired and re-hired employees. The company has been carrying out such verification as each employee is hired, since June 1, when the regulations became effective. Data General will soon begin contacting employees hired between November 6, 1986 and June 1 in compliance with the retroactive provisions of the law.

### ***Process***

All newly-hired or re-hired employees need to show original documents that verify identity and employment eligibility. The company must view these documents and complete a form verifying that the documents were checked and that the individual is eligible for employment. For a citizen, the documents would normally be a U.S. passport; a driver's license/state ID card and birth certificate; or driver's license/ID card with Social Security card. For a non-citizen, proof such as an alien registration card or passport and employment authorization are required.

### ***Retroactive***

Data General employees who joined the company between November 6, 1986 and June 1, 1987 will be contacted by their Human Resources representatives and asked to provide proof of work eligibility. This process will be completed during the summer.

## Milford And Woodstock Employees To Be Honored

Data General will honor employees from Field Engineering in Milford and Woodstock at a luncheon next week in recognition of their five years of service to the company.

The annual Five Year Service Award Luncheon will be conducted Friday, June 26, from 12 to 2 p.m. at the Sheraton Milford. Those being honored will be presented a commemorative gift for their continued service. A buffet will be served.

## Data General Continues Commitment To The Arts

Data General is continuing its commitment to the arts with donations to both the Summer's World Center for the Arts and the Framingham Community Concerts Association. The donations will fund each organization's upcoming schedule of performances.

Summer's World, a non-profit organization based in Worcester, will hold several series of concerts throughout the summer. Admission is free for every event. The Summer's World schedule is as follows:

**"The Big Band Series"** - Concerts are held every Wednesday evening from 7:00 p.m. to 10:00 p.m. at Worcester's Institute Park. Concerts run from June 24 until July 29.

**"The Mixed Bag Series"** - Events are held every Sunday afternoon from 2:00 p.m. to 4:00 p.m. in Elm Park in Worcester. Events range from folk music to children's puppet theater, and will be held from July 12 until September 6.

**"Crystal Park Potpourri"** - Concerts are held every Sunday afternoon from 3:00 p.m. to 5:00 p.m. in Crystal Park in Worcester. Performers include Blues Cruise, Duke Levine and Jaywalkin'. Events run from June 28 until August 23.

**"The Un-Common Jazz Series"** - Events are held every Friday from 11:30 a.m. to 1:30 p.m. on Worcester Common. Performers include Harriet Kennedy, Emil Haddad and Dick Odgren. Concerts run from July 3 until August 28.

**"Rock On The Common"** - Concerts are held every Thursday evening from 7:00 p.m. to 9:00 p.m. on the Worcester Common. Bands include Rick Berlin and the Heartbeats. Events will run from July 9 until August 13.

Summer's World also will hold a closing day event on Saturday, September 12, from noon until 7:00 p.m. in Greenhill Park, which will feature bands from around the area.

The Framingham Community Concerts Association, also a non-profit organization, will hold four concerts in the 1987-1988 season. The performances will be held at Framingham North High School.

The four concerts to be held are **Fascinatin' Rhythm**, a George Gershwin revue, on Saturday, September 12

at 8:00 p.m.; **Alexandria Quartet**, which features flute, harp, violin, viola and cello, on Saturday, November 7, at 8:00 p.m.; **Zorongo Flamenco Dance Theatre**, which will feature a group of dancers and musicians from Spain, on Sunday, March 13, 1988, at 3:00 p.m.; and the **New Christy Minstrels**, on Saturday, March 26, 1988, at 8:00 p.m.

### Industry Marketing Addresses Petroleum Industry



Elizabeth Kunze (left), Data General's Petroleum Exploration Marketing specialist, speaks with international petroleum industry consultants C.L. Tortorelli (center), president of Drilling Associates, Inc. and Bob DeBrophy (right) of Worldwide Projects. The discussion took place during the Industry Marketing Division's recent "Partners In Petroleum" seminar series. Leading international petroleum industry consultants, executives, and customers were introduced to Data General's computing solutions in exploration and production during the series. So far, "Partners In Petroleum" has reached more than 200 customers in Tulsa, Dallas and Houston.

## Data General Scholarships Awarded To Employees' Children

The children of six Data General employees from Westboro and Hooksett, N.H. have been awarded Data General-National Merit Scholarships in recognition of their outstanding academic high school performances. Based on financial need, each student will receive \$500 to \$2000 for each of their four years of undergraduate studies.

The graduating seniors receiving 1987 scholarship are:

- Ron Bobroff, who plans to attend MIT where he will major in astronomy. Ron's mother, Bonnie, works in the

Accounts Payable department in Hooksett.

- Matthew Bucella, whose father, Jorge Reyes, is the controller for Latin America within the Americas/Far East Division. Matthew will attend Villanova University in September where he will study astronomy.
- Anthony Candido, the son of Agnes Imregh, director of Business Plans and Controls within Business Group Planning. Anthony will attend Yale next fall where he plans to major in economics.
- Christopher Luczkow, whose father, Walter, is a Sales representative. Chris has been accepted at Worcester Polytechnic Institute where he will major in computer science.
- Jessica Pelon, the daughter of Technical Writing Manager Anne Pelon. Jessica will study biology at Barnard College beginning next fall.
- Jeff St. Onge, who will study mechanical engineering at Purdue University next fall. Jeff's father, Dave, is a senior hardware engineer within the Components and Materials Engineering department.

Each year, Data General awards 10 scholarships to the children of Data General employees around the U.S. This year's other scholarship winners are the children of employees working in New York, Colorado and North Carolina. Since 1979, Data General National Merit scholarships have been awarded to 72 children whose parent(s) work at Data General.

Gwendolyn Campbell, the daughter of Jim Campbell, vice president of Administration, also was awarded a Data General National Merit Scholarship. Gwendolyn, who has turned down the stipend which goes with the award, is a graduate of the Agnes Irwin School in Rosemond, Pennsylvania. She will attend Brown University in the fall.

In addition to the Data General National Merit Scholarship, the company awards one-time only, \$1000 Community Partnership Scholarships to graduating seniors who have the highest combined math/science average in the cities and towns where Data General has major offices or plants. Since the program was initiated in 1985 as part of the company's Billion Dollar Year Celebration, Data General has awarded 40 scholarships to graduates from high schools in Westboro, Southboro, Milford, Portsmouth, Durham, Hooksett, Westbrook, Apex, Clayton, Research Triangle Park, Fountain, Sunnysvale and Manhattan Beach.

According to Dave Dimmick, Donations administrator within the Public Affairs department, 17 high school students from across the country have been awarded the Community Partnership Scholarships this year.

"These scholarships recognize and celebrate the partnership between Data General and the community and encourage a partnership between the students and higher education," says Dave.

In addition, this year Data General has added a \$500 award to the high schools from which the Community Partnership scholarship winners are graduating. This grant will be made in the name of the teacher having the greatest influence on the student's success as selected by the scholarship recipient.

"These new awards give the students a chance to recognize the efforts of the teacher and to thank him or her for their contributions to the student's education," says Dave.

## Benefits

### Savings And Investment Plan Deadline is Today

Whether you are currently participating in the Savings and Investment Plan, or planning to enroll on July 1, you should be aware of recent modifications and upcoming plan deadlines. Enrollment forms are due today, June 19.

#### *Mailings*

Savings and Investment Plan statements for the first quarter of 1987 were mailed out the week of May 11 to all employees participating in the Savings and Investment program. If you have not yet received your statement, please contact the Benefits department at 4550.

New-hire Savings and Investment packages were mailed to all employees who became eligible to participate in the Data General Savings and Investment Program as of this quarter effective July 1.

#### *Fund Transfers*

Participants in the Savings and Investment Plan can transfer all, or part, of their account balance from one investment fund to any other investment fund(s) at the start of any calendar quarter BUT not more than once every six months.

If you would like to transfer funds for the calendar quarter beginning July 1, you must complete the Fund Transfer portion of the Savings and Investment Enrollment/Change Form and return it to the Benefits department in Westboro no later than today, June 19. All transfers will become effective July 1.

The transfer of funds will not affect your future contributions. If your intention is to have all contributions after July 1 directed to a different fund(s) you must also complete the Investment Election portion of the form.

Enrollment/Change forms are available from your Human Resources representative or the Corporate Benefits department in Westboro.

#### *Enrollment & Change Deadlines*

Today, June 19, is the deadline for submitting all new enrollments and quarterly changes to the Savings and Investment Plan. The enrollment form (used for both new enrollments and changes) must be returned to your Benefits department by today for enrollments/changes effective July 1.

## Plan Eligibility

If you are a recently-hired employee at Data General, and will have completed 90 days of employment before July 1, you will be eligible to join the Savings and Investment Plan effective July 1.

A packet of descriptive material should have been mailed to your home. If you have not received this information, contact your Benefits administrator or Human Resources representative.

After reading the information, simply complete the enrollment form and submit it to your Benefits or Human Resources representative. If you decide not to contribute to the program at this time, you will be able to enroll at the start of the next quarter in October.

If you have any questions regarding the program, contact your local Benefits administrator.

## Training

Educational Services offers a full schedule of courses for Data General employees. Listed below are some of the software and hardware courses scheduled for July.

- **MV/Family Hardware Concepts for Software Professionals (S170)** - This five-day course gives a comprehensive overview of the architectural arrangement and terminology of the ECLIPSE/MV family computer systems. This course is geared toward software professionals who work with ECLIPSE MV/Family computers and for those who need a background in Data General hardware concepts. This class begins on Monday, July 13.

- **XODIAC System Manager (S220)** - This course is designed for AOS or AOS/VS programmers, analysts, and system managers who wish to learn the use, installation, and management of the Data General XODIAC network management system. To be eligible, employees should have taken S209 (AOS and AOS/VS User) and either S219 (AOS System Manager) or S219/VS (AOS/VS System Manager). S140 (Introduction to Data Communications) is also recommended. This three-day class starts on Wednesday, July 15.

- **Introduction to 32-Bit Assembly Language Programming (S101/VS)** - Employees taking this course will learn how to flowchart, code, edit, assemble, execute, and debug programs using Data General's ECLIPSE MV/Family 32-bit assembly language and utilities. The prerequisite of S209 (AOS & AOS/VS User) or equivalent experience is needed to take this ten-day class which begins on Monday, July 20.

- **CEOWrite and CEO CONNECTION (OA154)** - This workshop will acquaint employees with the features, terms and functions of the CEOWrite word processor and its CEO CONNECTION to a host computer system. CEO word processor experience and typewriter keyboard experience is needed to take this three-day class which begins on Wednesday, July 15.

- **CEO Implementation Workshop: Automating Your Workplace (WK101)** - This two-day course is geared toward CEO office managers who must develop a standardized user environment. Employees will learn to develop and document standards and procedures for a private user, as well as CEO user migration. Participants are requested to bring to class specific materials used in their daily operations. The workshop begins on Tuesday, July 21.

- **Introduction to Data General 32-Bit Computer Systems (H100/MV)** - The evolution of Data General's computer architecture from a 16-bit to the 32-bit design used in the ECLIPSE MV series is presented in this ten-day course. It explains the terminology of virtual storage systems, and provides an overview of mass storage devices, terminals, printers and data communications. A knowledge of general computer design concepts, digital circuitry, and number conversions is needed for this class which begins on Monday, July 6.

Prior approval of your supervisor is required for course registration. Call (tie-line) 221-1647 to enroll in these or other classes. All classes will be held at the Education Center at 2400 Computer Drive in Westboro.

## Have You Filled Out Your New W-4 Or W-4A?

The Tax Reform Act of 1986 requires that a new W-4 or W-4A be submitted to employers no later than October 1, 1987. Failure to comply with the law can result in a higher federal withholding. If a new W-4 or W-4A form is not submitted to a Data General Payroll site by October 1, the Payroll departments are required to alter employee exemptions according to the law. The law states that "if a new form W-4 or W-4A is not submitted, the employer must withhold if the employee is single, claiming one withholding allowance, or married claiming two withholding allowances, depending on whether the employee checked the single or married box on the most recent W-4 on file with the employer."

Employees can obtain W-4 and W-4A forms at the Payroll department. Should you need assistance filling out either form, the IRS, through its Taxpayer Service, can help answer your questions and provide you with additional information.

## Helicopter Schedule is Posted

Effective Monday, June 29, the Data General helicopter will operate on a new schedule, offering additional service between Westboro and Durham/Portsmouth when the regular flights are filled. To accommodate this, service to Westbrook will be limited to Monday and Friday.

To make reservations call Corporate Travel in Westboro at extension **232-HELI** (232-4354). Passengers must be at the Helipad **5 minutes** before scheduled departure time for loading and safety briefing. Unless delayed by weather, flights will depart precisely on time, or earlier if all scheduled passengers are boarded.

Passengers desiring to depart/arrive at Southboro may do so by advising the reservationist. Actual departure time may be a few minutes before or after the scheduled time shown for Westboro/Southboro.

Mail and packages may be left in the mailbox at each helipad for delivery. Senders should check with Corporate Travel to ensure that the scheduled flight is going. ***It is the responsibility of the sender to arrange for pick-up at the destination.*** The pilot will deliver the material to the appropriate mailbox, but they are not serviced by the mailrooms. ***Any package weighing more than 5 pounds must be pre-arranged for delivery with Corporate Travel.***

Passengers will be requested to provide their weight when making a reservation. ***This is important information that is used to calculate aircraft weight and must reflect the passenger's "traveling" weight, including briefcase, packages, etc.***

### **Data General-New England Helicopter Schedule**

#### **Monday Through Friday (except as shown)**

##### **Westboro/Southboro To Portsmouth/Durham**

Departure	Arrival
7:00 a.m. (Primary)	7:33 a.m.
*8:30 a.m. (Tues., Wed., Thurs.)	9:03 a.m.
12:00 p.m.	12:33 p.m.
3:30 p.m. (Primary)	4:03 p.m.
*5:00 p.m. (Tues., Wed., Thurs.)	5:33 p.m.

##### **Portsmouth/Durham To Westboro/Southboro**

Departure	Arrival
7:37 a.m. (Primary)	8:23 a.m.
*9:07 a.m. (Tues., Wed., Thurs.)	9:53 a.m.
12:37 p.m.	1:30 p.m.
4:07 p.m. (Primary)	4:53 p.m.
*5:37 p.m. (Tues., Wed., Thurs.)	6:23 p.m.

##### **Westboro/Southboro To Westbrook**

Departure	Arrival
7:00 a.m. (Mon. and Fri. only)	8:13 a.m.
3:30 p.m. (Mon. and Fri. only)	4:43 p.m.

##### **Westbrook To Westboro/Southboro**

Departure	Arrival
8:38 a.m. (Mon. and Fri. only)	9:53 a.m.
5:08 p.m. (Mon. and Fri. only)	6:23 p.m.

##### **Westboro/Southboro To Hooksett**

Departure	Arrival
10:00 a.m.	10:28 a.m.
2:20 p.m.	2:48 p.m.

##### **Hooksett To Westboro/Southboro**

Departure	Arrival
10:32 a.m.	11:00 a.m.
2:52 p.m.	3:20 p.m.

##### **Portsmouth/Durham To Westbrook**

Departure	Arrival
7:37 a.m. (Mon. and Fri. only)	8:13 a.m.
4:07 p.m. (Mon. and Fri. only)	4:43 p.m.

##### **Westbrook To Portsmouth/Durham**

Departure	Arrival
8:38 a.m. (Mon. and Fri. only)	9:03 a.m.
5:08 p.m. (Mon. and Fri. only)	5:33 p.m.

***\*Supplemental flights that will operate only if the primary flight is filled.***



## Blood Drive Next Month

A blood drive will be held in Westboro on Tuesday, July 14 and Wednesday, July 15 from 8:00 a.m. to 4:00 p.m. each day. A blood donor facility will be set up in the Guest Marketing area in Building 14A.

If you would like to donate blood, sign-ups will be conducted from 11:00 a.m. to 1:30 p.m. on:

- July 7 at the Building 14A cafeteria;
- July 8 at the Deli in Building 14B; and
- July 9 in the Building 14B Pizzeria.

### **Who May Give?**

If you are more than 18 years old, weigh at least 110 pound and have not donated blood over the past eight weeks, you may participate in the upcoming donation program.

The blood collected during this Red Cross-sponsored program will be used to service more than 150 hospitals in Massachusetts and Maine. The patients most likely to use the blood you donate are those who are afflicted with the following disorders:

- Cancer
- Heart disease
- Gastrointestinal disease
- Fractures and trauma
- Anemia
- Obstetric procedures
- Bone and joint diseases
- Lung, liver and kidney disease

### **I'd Like To Donate, But...**

More and more people are expressing a concern about donating blood because of the fear of contracting AIDS. However, it is impossible to acquire AIDS by donating blood. All the equipment which is used to draw blood is sterile and non-reusable, including the needles. The site on the skin from which blood is drawn is thoroughly cleansed.

## People

### **In Systems Development**

**Beverly Stone** and **Alan Zarembok** recently have joined Data General as software engineers.

Beverly works within the Performance Analysis group, reporting to Tom Morgan, group leader. She supports workstation systems, and measures the performance of Data General and major competitors' products. She also supports Marketing, Development and Sales in workstation performance issues.

Before joining Data General, Beverly was employed with the University of Illinois, IBM and Cycle Products. She holds a bachelor's degree in engineering math and computer science.

Alan is employed within the Operating Systems group, reporting to Manager Joyce Alcamo. He is responsible for supporting the AOS/VS kernel operating systems. He holds a bachelor's degree in computer science from Boston University.

**Doug Stahl** has joined Data General as a senior hardware engineer within the Large Systems group. He reports to John Allen, senior project leader. Doug will design and develop high performance I/O hardware, and will design gate arrays and board level interface circuitry.

Before joining Data General, Doug was employed at Telco Systems and GTE Communications Systems. He holds a bachelor's degree in information engineering from the University of Illinois.

### **In Communications Systems**

**Pankaj Shah** has joined Data General as software engineer within the Communications Systems Group (CSG), reporting to Manager Nelson Ronkin. Pankaj is responsible for developing communications products in the Data Transport Systems department. Pankaj holds a bachelor's degree in computer science and math from Purdue University.

### **In Corporate Purchasing**

**Ken Keiran** and **Dominic Carota** have joined Data General as associate buyers within the Corporate Purchasing department, reporting to Jim Craig, Semiconductor Purchasing manager.

Ken will be responsible for the procurement of IC logic commodities. Dominic will be responsible for the procurement of linear, interface, CMOS and HMOS devices.

Before coming to Data General, Ken was employed at Fire Control Instruments and the Massachusetts Army National Guard. He holds a bachelor's degree in business management from the University of Massachusetts at Amherst.

Dominic has worked at Clark University and Empire Distributors before joining the company. He has earned a bachelor's degree in government and economics from Clark University.

*Mini News* is published weekly for the employees of Data General-Westboro. Material may be submitted for publication to Mary Anne Been at extension 4705 or MS A235. Data General - An Equal Opportunity Employer.



## Activities

### Aerobics Change

On Wednesday, July 1, aerobics will be held in the pizzeria instead of the cafeteria due to scheduling conflicts. Classes will meet at the usual time.

### Shape Up With Exercise

The Data General Fitness Club continues its exercise program with upcoming sign-up days for the next session of aerobics. Employees wishing to enroll in the classes may sign up on either of the registration days being held Monday, June 29, and Tuesday, June 30, at 5:15 p.m. in the main cafeteria in Westboro. There are no longer any mail-in registrations.

**Dancin' Aerobics** and **Free Style Aerobics** are offered twice a week in the main cafeteria in Westboro at 5:20 p.m. for an eight-week period. Dancin' classes will take place every Monday and Wednesday starting Wednesday, July 1. Free Style classes will be held every Tuesday and Thursday starting Thursday, July 2. There will be no classes on registration days. All classes are taught by qualified exercise instructors from the Greater Worcester YMCA.

The cost is \$20 per person for the eight-week program. All payments must be made payable to the Data General Activities Committee.

### Aerobics To Be Offered Again In Milford

The Data General Fitness Club will be starting the second session of aerobics in Milford. Class will meet from 5:15 p.m. to 6:15 p.m. every Tuesday and Thursday for eight weeks. Registration will be held Tuesday, June 23. The cost is \$20 per person for the eight-week session. For further questions, contact Jacqui Risolo at extension 2366 in Milford.

### Activities Committee Plans Outing Day For Today

To help employees with questions regarding this year's outing series, the Activities Committee will be available today, June 19. Members of the Activities Committee will be in the Westboro and Milford cafeterias during lunch, and in Southboro in the Building 4 cafeteria, during lunch, as well. Registration forms will be available and will be accepted at this time. Tickets will not be available.

### Deadline Set For Outing Tickets

If you plan on attending a Data General outing this summer, you must order your tickets by Friday, June 26. All outing selections MUST be received by the Activities office in Westboro by that day.

Order forms received after June 26 will automatically be assigned to the Rocky Point outing.

To help in your selection, the outings are listed below.

### A Night At The Races

The first of the Data General 1987 summer outing series will be held at Rockingham Park in Rockingham, N.H., on Saturday, July 11, at 6:00 p.m.

Post time for the first race is 7:30 p.m. Employees can watch all the action from a club house view. The evening's program includes several throughbred races including one dedicated to all the Data General attendees.

As you enjoy the races you can feast on a buffet featuring:

- Country-style barbecue
- Baby back ribs
- Corn on the cob
- Watermelon
- Corn bread
- Coffee or tea

Data General will be providing transportation for this outing. Buses will leave from the lobby in Building 14B starting at 5:00 p.m. Buses will leave as they fill. The last bus will depart at 5:30. Buses for the return trip will leave at midnight, and will leave as they fill. If employees wish to leave earlier, buses will depart as they fill.

### A Brunch Cruise On Boston Harbor

The next Data General employee outing, the Brunch Cruise on Boston Harbor, is scheduled for Sunday, July 19, from 11:00 a.m. to 2:00 p.m. The ship will leave from Commonwealth Pier in Boston. This outing is limited to the first 500 employees.

Employees participating in this outing will enjoy a Sunday brunch cruise as they cruise historic Boston Harbor.

As you cruise the harbor you can also enjoy the brunch buffet:

- Orange and tomato juices
- Danish, muffins and bagels
- Scrambled eggs
- Chicken A La King
- Baked Virginia Ham carved to order
- Bacon
- Lyonnaise potatoes
- Tossed salad
- Assorted cookies

A musician will be onboard to play favorite tunes throughout the trip.

**Parking:** Parking is available at Commonwealth Pier (now called the World Trade Center) or other waterfront parking areas. Employees are responsible for parking fees. Please note that tickets are still available for both the Rockingham Park and Brunch Cruise outings.

## **Gershwin/Bernstein Concert At Great Woods**

The third Data General outing is a concert at Great Woods in Mansfield, featuring selected works by Gershwin and Bernstein. The concert, scheduled for Sunday, August 9, at 3:00 p.m., is limited to the first 700 employees.

The Great Woods Performing Arts Center is in its second season of operation. Located at routes 495 and 140 in Mansfield, the 106-acre site is the summer home for the Pittsburgh Symphony Orchestra. Our seats for this performance are under the roof.

Michael Tilson Thomas will be conductor and piano soloist as the symphony performs the following program:

Bernstein . . . "West Side Story"

Bernstein . . . Chichester Psalms

Gershwin . . . Three Pieces for Piano and Orchestra

Gershwin . . . "Porgy and Bess" Suite

The Great Woods Festival Chorus will join the symphony for Bernstein's Dances from West Side Story and Gershwin's Porgy and Bess Suite. The gates open two hours early for picnicing on the lawn.

### **Transportation For Outings**

Bus transportation has been arranged for the harbor cruise scheduled for Sunday, July 19, and for the Great Woods concert, which will be held on Sunday, August 9. The cost to ride on these buses will be \$7.00 per passenger. If you would like to take a bus to either of these outings, interested employees should send a check, along with name, address and telephone extension to "Buses," Mail Stop 4-23 in Southboro. Space is limited, so employees are urged to reserve seats as soon as possible. The buses will pick passengers up in front of B lobby in the 4400 building in Westboro.

### **Lobster Clam Bake/Outing At York Animal Park**

The next outing in this year's series is an old-fashioned lobster clam bake at York Wild Kingdom Amusement and Animal Park in York Beach, Maine. The outing is scheduled to take place Saturday, August 22. Rain date for this outing is Sunday, August 23.

The day begins at 9:30 a.m., and Data General employees have the park exclusively until 5:00 p.m. The zoo opens at 10:00 a.m. and the rides open at 11:00 a.m.

#### **Menu:**

Donuts/coffee available from 9:30 a.m. - 10:30 a.m.

Lunch 11:30 a.m. - 2:30 p.m.

Choose from lobster clam bake *OR* barbecue (Employee must make selection when purchasing tickets)

Lobster clam bake includes:

Lobster, clams, corn on the cob, hot dog, salads, condiments, ice cream, soda

Barbecue includes:

Hamburgers, hot dogs, chicken, salads, condiments,

chips, ice cream, soda

Included in the picnic area is a softball/volleyball field.

York Kingdom offers an amusement park and zoo for all ages which includes hundreds of animals, a grand prix raceway, mini-golf, bumper cars, paddle boats, kids' games, animal shows in the zoo, and a barber shop. A quartet playing throughout the day.

The park is located at York Beach, Maine, within walking distance (1 block) to various shops and beautiful York Beach. Employees will have access in/out of the park throughout the day (hand will be stamped) to give you freedom to go to the beach area.

Employees are invited to stay in the park until 10 p.m. (closing time) and enjoy free rides (except for the raceway and mini-golf). The park opens to the public after 5 p.m.

Cost to employees:

Barbecue Option: \$2.00/each

Lobster Option: \$3.00/each

Children 2 years old and under, no charge

### **A Day At Rocky Point Park**

The final outing in the 1987 series is a day at the Rocky Point Amusement Park in Warwick Neck, Rhode Island, on Saturday, August 29. The park opens at 10:00 a.m., and employees will be provided with unlimited rides from 10:00 a.m. until the park closes. The park will be open exclusively to Data General employees from 10:00 a.m. to 3:00 p.m.

#### **Menu:**

Coffee, donuts and milk upon arrival

Lunch will be served from 11:00 a.m. to 2 p.m.

• Clam Chowder

• Clam cakes

• Watermelon

• Soft drinks

Served family-style.

Dinner will be served from 4:00 p.m. to 8 p.m.

• Broiled Chicken

• French fries

• Rolls and butter

• Soft drinks

On the Midway:

• 2 medium soft drinks

• Soft ice cream cone or cotton candy

Events and Facilities:

• Unlimited rides

• The corkscrew loop coaster

• The cyclone

• The Flume

• Ferris wheels

• The sky diver

• The sky liner tramway

• Kiddieland

• Bumper cars

• Musical entertainment and shows

• Softball Field

• Volleyball court horseshoe court bocci court

• Musical entertainment in the palladium

**Tickets:** To order your outing tickets for the above-listed events, or any Data General outing this summer:

- Fill out the order form completely.
- Orders must be accompanied by payment. Make checks payable to Data General Activities Committee.
- Enclose a stamped, home-addressed business envelope. Tickets will be mailed to your home.
- Return forms to: Outings, at Mail Stop C-128 in Westboro or mail to Data General, 1987 Outings C-128, 4400 Computer Drive, Westboro, Ma. 01580.

Order forms are located in the literature racks in Westboro and in the Personnel offices in Durham, Hooksett, Portsmouth, Southboro and Milford.

**Sail The Caribbean;  
Extra Cabins Now Available**

The Data General Activities Committee has planned a seven-day Caribbean Cruise aboard the English ship, the Cunard "Countess" for Data General employees and guests. This air/sea event is scheduled to begin Saturday, October 3. The fare is \$948 per person/double occupancy. This price includes round-trip bus transportation between Westboro and Logan Airport, round-trip air fare from the airport to San Juan, Puerto Rico, all meals, entertainment, champagne upon arrival, and an on-board Data General party.

To make reservations, send your name, address, phone number and room requirements, along with a \$200 per person deposit, to Peter Faford at Mail Stop C-232. For more information, contact Peter at extension 6776 in Westboro, or via CEO at P:WEBO05.

**Data General Softball Standings**

The following are the Data General Softball League standings as of Friday, June 12:

**American League**

	WON	LOST	TIED	PTC
<b>Division A</b>				
Hit Men	4	0	0	1.000
D.G. I.M.G.	3	0	0	1.000
Still Wellesley	2	1	0	0.667
S.I.E.	2	1	0	0.667
Devios	1	2	0	0.333
<b>Division B</b>				
24 & Under	4	1	0	0.800
D.G. Red Ties	2	2	0	0.500
Mongrels	1	1	0	0.500
Ants	2	3	0	0.400
Rodney's Kids	0	3	0	0.000
<b>Division C</b>				
Off Base	3	0	0	1.000
T-Bones	3	1	0	0.750
Slugs	1	2	1	0.375
Bat Busters	1	2	0	0.333
Cadavers	0	3	0	0.000
<b>Division D</b>				
Base Invaders	3	0	0	1.000
Misfits	1	0	2	0.667
DG/Direct	1	2	0	0.333
Eng. Tech.	0	3	0	0.250
Eclipse Eng.	0	3	0	0.000
<b>Division E</b>				
Byte Blasters	2	1	1	0.625
N.O.T.A.	1	3	0	0.250
Short Hops	1	3	0	0.250
W.C.I.F	0	2	0	0.000

**National League**

Building 5	4	0	0	1.000
Stockroom 9	2	1	0	0.667
Maintenance	2	1	0	0.667
Special Systems	2	2	0	0.500
Nuked	1	2	0	0.333
Runagades	0	2	0	0.500
Bubbas	0	3	0	0.000

## MARKETPLACE

### CARPOOL

**Carpool**, to form carpool from downtown Boston to Webo, 8:30 - 5:30, Allen ext 6877

### FOR RENT

**Apartment**, 1 bdrm, near Rt 495, avail July 1, \$475/mo + util, no security, 883-5861 (Milford).

**Sallsbury Beach Rental**, \$200 - \$435/wk, (603) 893-3464 (Salem, NH).

**Apartment**, priv home, 2 rms + bath, kitchenette, priv entr, balcony, storage, laundry, avail August 1, \$450/mo incl util, 422-7876 (Sterling).

**Condominium**, 2 bdrm, 2 bath, balcony, frpl, garage, laundry, \$775/mo, 485-6369 (Marlboro).

**Condominium**, Campton, NH, 3 bdrm, slps 8, lake/pool, near Waterville Valley, avail wk/wkends, 769-2355 (Norwood).

**1/2 Duplex**, 3 bdrm, w/w, kitch/pantry/liv rm/din rm, \$800/mo, avail July 1, 473-2120 (Hopedale).

**Condominium**, Framingham, 1 bdrm w/balcony, avail 8/1, \$525/mo, 478-7319 (Milford).

**Apartment**, 2 bdrm, frpl, quiet, cbl TV, non-smoker, no pets, \$650/mo incl util, 842-8743 (Shrewsbury).

**House**, 2 bdrm, 1/2 acre, near Mass Pike/Rt 20, appl, laundry, \$950/mo, 1st/last and security required, 797-5015 (Millbury).

**House**, 3 bdrm, Seagull Beach, West Yarmouth, \$650/wk, 529-3434 (Upton).

**Efficiency**, Dennisport, Cape Cod, patio/cable TV/pool, near beach, \$295/wk, \$175/wk off-season, avail wknds, 435-3794 (Hopkinton).

**Duplex**, Dennisport, Cape Cod, kitchen, deck/cable TV, near beach, \$450/wk in-season, \$295/wk off-season, \$150/wknd off-season, 435-3794 (Hopkinton).

**House**, 3 bdrms, deck, near beaches and boat landings, Falmouth, June \$300/wk., July & August \$400/wk. 923-1489 (Watertown).

**WANTED**  
**Carousel Slide Projector**, 661-4590 (Cambridge).

**Roommate**, male, non-smoker, to share lrg single family house, \$275/mo + 1/4 util, 898-2847 (Westboro).

**Roommate**, female, 2 bdrm, \$300/mo incl heat/laundry, 898-2566 (Westboro).

**Roommate**, non-smoker, to share 3 bdrm duplex in Shrewsbury, liv rm, basement, 2 baths, beach rights to Lake Quinsigamond, 15 min to Webo, \$325/mo + 1/3 util, 754-3846 (Worcester).

**Roommate**, to share condo, fully-applianced, pool, tennis, laundry, 4 miles from Data General, male non-smoker, \$325/mo + 1/2 util, 366-9430 (Westboro).

**Small 1.5 or 2.0 hp gas engine**, for 3-man rubber boat, 655-3039 or 655-0222 (Natick).

### FOR SALE

**Whirlpool Dish Washer**, needs motor, \$25, 393-2490 (Northboro).

**Stereo Equalizer**, ADC 10-band graphics w 2 patchcords, \$70; Bic 914 turntbl, w/Ortofon LM-10 cartridge, \$100, (603) 622-7479 (Manchester, NH).

**Drum Set**, Tama 5 pc, white, pwr toms, roto toms, + accessories, \$150, 485-4007 (Marlboro).

**Blonde Gibson ES-335-DOT Guitar**, \$600; JB Player Bass, \$250, ea w/hardshell case, 473-5158 (Milford).

**Truck Camper**, 8', slps 4, 3 burner stove, sink, ice box, hdwd cabinets, incl camper jacks, 365-5324 (Clinton).

**Cape**, 6 rm, kitch, lrg liv rm, deck, above grnd pool, \$144,500, Southboro, 366-9444 (Westboro).

**Patio Blocks**, 1" x 8" x 16", gray, .39/ea, 966-1463 (Bellingham).

**Items**, Ten Cyclo Computer II, \$50; mnt rear rack carrier, \$20; 2 dual steel radials, BR78-13 w/4 lug wheels, \$25; 481-4218 (Marlboro).

**Jayco Jayswan Designer Series Tractor**, new, loaded, \$13,500, 966-3456 (Bellingham).

**Ariens 6 HP Riding Lawn Mower**, \$125, 832-3142 (Auburn).

**Tires**, new, 2 Roadhandler P185-80/R13 steel belt radials, all season, BO, 234-6807 (Whitinsville).

**Items**, used, 3 aluminum sliding dr sets, \$50/ea; 8' oak church pew w/cushion, \$50; teak wall unit, \$65, 435-6494 (Hopkinton).

**Items**, Whirlpool no frost refrig, 14.1 cu ft, ivory, 10 mo old, \$375; Frigidaire wash/dry, electric, white, 10 mo old, \$300/washer, \$200/dryer, 393-9002 (Northboro).

**Items**, Ross exerc bike, 300 mi, \$175; unfnshd wood screen dr, 29 3/4" x 78 1/4", \$50;

electric lawn mower, \$25; RCA 19" color TV, w/remote, \$35; chrome TV stand, \$15; queen sz metal bd frame, \$15; vacuum cleaner, \$15; wght bench frame, \$10, 872-1668 (Framingham).

**Condominium**, 5 rm, pool/courtyd/club house, 15 min to Webo, \$79,900, 842-1033 (Shrewsbury).

**Porcelain Sink**, blue lavatory, w/fixtures, 473-4347 (Milford).

**Items**, oak microwave util cart, 20" x 30" x 28", 6 draws, adj shelf, pull-out cutting bd, \$225; TV/VCR cabinet, 42" x 32" x 20", early American, adj shelf, \$120, 422-7563 (Sterling Jct).

**Chrome Spoke Rims**, w/wire baskes, 4 14", incl hdware/locks, fit most GMs, \$75/BO, 842-4083 (Shrewsbury).

**Condominium**, 2 bdrm, 1000 sq ft, balcony/pool/deeded park, 15 min to Webo, \$89,000, 842-4083 (Shrewsbury).

**House**, 8 rm Colonial, 4 bdrm, 2 1/2 baths, frpl, scr porch, 1 acre, \$224,000, 478-4588 (Milford).

**Items**, freezer, 15 cu ft, upright, \$25; elec lawn mower w/bag, \$40, pr 3-way speakers, 10" woofer, \$50; Hirsch saw tbl, \$20, 879-5919 (Framingham).

**Items**, love seat, \$150; recliner, \$25; weight set, \$100; dresser, \$100; end tbls, \$120, 965-7340 (Newton).

**Bow Window**, new insulated glass w/screens, 4'9" x 6', \$350, 485-1423 (Marlboro).

**Hydrostream 14 1/2' Boat**, 85 hp Evenrude, 4 wrap-around seats, w/ski bar, trailer, 3 tanks, in water for test drive, \$4500/BO, 892-8081 (Leicester).

**Items**, custom drapes, gold, \$60/BO; kitchen fixture, 5 bulb set-up, \$25/BO, 655-3039 (Natick).

### AUTOS

'62 Buick Special Deluxe, 215 ci, V8, alum block, 60K mi, 20 mpg, extra parts, service manuals, antique, no rust, \$3200, 529-6558 (Upton).

'71 Ford Mustang Mach II, 4 spd, AC, 15K mi on rebuilt eng, loaded, \$3800, 755-9515 (Shrewsbury).

'76 Dodge Aspen SE, 2 dr, maroon, \$500, 485-7829 (Marlboro).

'76 International Scout, 4 x 4, V8, 66K mi, \$1800/BO, 473-4347 (Milford).

'76 750 Kawasaki Twin, new tires/rear brakes/sprockets/chain, recent tune-up, Nikko horns, roll/sissy bar, \$895, 882-6764 (Oakham).

'78 Ford E150 Van, custom, 4 new tires, \$3000/BO, 852-1975 (Worcester).

'78 Ford Mustang II, 90K mi, one owner, (401) 766-8141 (Rhode Island).

'78 Yamaha 650 Special, 12K mi, \$900/BO, 422-7607 (Sterling).

'78 Toyota Corolla Wagon, 5 sp., a/c, AM/FM stereo, \$1150, 872-6026 (Framingham).

'80 Volkswagen Rabbit Diesel, 4 dr hatch, 5 spd, rf rack, defrost, 48 MPG/city, \$1600/BO, 853-0863 (Worcester).

'80 Honda CX500 Custom, w/fairing, trunk, air shocks, many extras, 24K mi, \$600/BO, 877-7502 (Framingham).

'80 Yamaha X51100 Motorcycle, 8400 mi, \$1500; fiberglass cap for mini pick-up truck, \$100; mag wheels w/tires/lugs/centers and locks, \$100, 883-2724 (Millville).

'81 Renault 18i, 4 dr, 5 spd, 65K mi, \$1000/BO, 485-4007 (Marlboro).

'82 Chevrolet Cavalier, 4 dr, 4 cyl auto, 49K mi, \$2900, 485-7953 (Marlboro).

'83 Renault Alliance DL, 4 dr, 5 spd, AM/FM cass, AC, tint glass, cloth inter, defrost, 77K mi, \$2500, 435-9894 (Hopkinton).

'85 Suzuki GS1150, K&G rack, under 5K mi, just tuned, \$3200/BO, 842-4083 (Marlboro).

'85 450 Honda Nighthawk, 1000 mi, many extras, \$1500/firm, 852-1975 (Worcester).

### HOURS

**Westboro Cafeteria**, full breakfast, 6:30 a.m.-10:00 a.m.; lunch, 11:30 a.m.-1:30 p.m.; open from 6:30 a.m.-3:00 p.m. for beverages.

**Pizzeria**, serving from 10:00 a.m.-2:00 p.m.

**Pumpnickel's Deli**, Coffee & pastries, 6:30 a.m.-7:30 p.m.; full breakfast, 6:30 a.m.-10:00 a.m.; deli lunch, 11:00 a.m.-2:00 p.m.;

Take-out, 3 p.m.-6:30 p.m.; dinner, 5 p.m.-7:30 p.m.

**Milford**, full breakfast, 6:30 a.m.-8:30 a.m.; lunch 11:15 a.m.-1:15 p.m.; open from 6:30 a.m.-3:15 p.m. for beverages.

**Southboro**, full breakfast, 6:30 a.m.-10:00 a.m.; lunch 11:15 a.m.-1:00 p.m.; open from 6:30 a.m.-3:00 p.m. for beverages.