

# Mini News

## News For The Employees of Data General

---

March 20, 1987

### An Afternoon With The America's Cup



Dick McCurdy



Wayne Fitzsimmons

Dick McCurdy, the computer guru who introduced the world of high technology to yachting, and Wayne Fitzsimmons, Americas/Far East vice president, last week took some time from their schedules to highlight Data General's role in the America's Cup challenge before about 300 employees in Westboro.

Dick, vice president of Ockam Instruments, designed and created the software for the DATA GENERAL/One portable computer to run on-board Cup-winner *Stars and Stripes '87*.

Dick opened his talk by telling employees why *Stars and Stripes '87* chose to use a DATA GENERAL/One computer.

"The purpose of an on-board computer is to supplement the instruments and to tell the crew what's going on," Dick said. "The machine we needed on-board *Stars and Stripes '87* was something that would do graphics, something that was light, reliable, and small, but something powerful enough to do heavy-duty computing. The DATA GENERAL/One was the only computer available that addressed all of our needs."

The DATA GENERAL/One's programs were generally tactical. The computer displayed navigational information on time and distance to the starting line, the boat's track on the course relative to the next mark, wind direction and velocity, and the position of the competition.

"We started with a list of things we wanted to do, and found the machine to do it," Dick said. "This will become standard equipment on 12-meter yachts, as the applications grow. We will see it being used more in boat and sail design."

Dick added that despite the rough seas the yacht raced in, the only time the computer didn't work was when one of the crew forgot to plug it in.

"The most important thing to know about a 12-meter yacht is how fast the boat should go," Dick said. "Although there is a best boat speed, it's not easy to find. Once you do find that speed, you need something to calculate the miles and tell the crew what that speed should be."

"That's the other job the DATA GENERAL/One should do, and, as such, it contributed to the winning of the America's Cup. If the calculation capability hadn't been there, it wouldn't have been possible to sail the yacht accurately enough."

"Winning would have been a lot harder without the DATA GENERAL/One. We were afforded a five seconds per mile advantage with the computer. The computer has become indispensable."

According to Wayne, the concept of putting computers on-board America's Cup contenders started with Data General's NOVA 1200, which was used on the yacht *Courageous* in 1974. In 1983, the *Australia II* used a microNOVA and a NOVA, donated by Data General-Australia, to become the first contender in 132 years to wrest the coveted cup away from the New York Yacht Club. The company also provided systems and

much support to *Australia IV* this year, which was a contender for the cup defense.

"The introduction of the DATA GENERAL/One to the *Stars and Stripes* was not an accident. It came about over many years, and a series of logical conclusions over what was needed. The purpose for getting together today is just to revel in the glory, briefly, of how we did it," Wayne said at last week's presentation.

"Our role in the America's Cup has been very successful, and that success is in no small way due to employees' participation. Because of Data General employees, we are able to count, publicly, a very great success story for this company."

## **Data General Contributes \$33,000 To FRONTLINE**

Data General, for the second consecutive year, has donated \$33,000 for the sponsorship of WGBH TV's FRONTLINE, a weekly series of news documentaries. Produced by WGBH with a consortium of public television stations, the hour-long program airs on Tuesday evenings at 9 p.m. on channel 2.

In 1987, FRONTLINE is producing 18 new programs, dealing with such topics as astronauts, drugs, adoption, earthquakes and Ferdinand Marcos. FRONTLINE will again bring print journalists to documentary reporting - William Greider, former Washington Post reporter and editor and now national affairs editor at Rolling Stone Magazine; Leon Dash, Washington Post investigative reporter; Roger Wilkens, former New York Times editorial writer, and author James Reston, Jr.

## **How Reliable Will New England Electricity Be?**

How much electricity New England will have by 1990 is producing a lot of sparks in the area. A detailed report by electric power experts last year concluded that by 1990 the region would begin to run short at current rates of consumption.

According to the Rudden Report to the New England Governors Association, the region could stretch the shortage out until 1994-96 if the consumption rate were lower, due to conservation measures. But at today's rates, the region's lights may begin to flicker and brownout in three to four years.

Data General became concerned over the pending shortage because of its possible impact on computer customers. "Few people are aware today of the havoc that power shortages cause with computer operations when there is no protection," says President Ed de Castro. "I have become concerned that our customers

become fully aware of the potential problem, and that we work together to minimize it."

Data General has joined a group of electric utilities, banks, industries and unions to try to increase understanding of the problem. Ed serves on its Board of Advisors. The group, the Coalition for Reliable Energy, has received recent publicity since Massachusetts Attorney General James Shannon has filed a complaint charging false and deceptive advertising. The advertising is paid for by the electric utilities.

Aside from the complaint, which will be ruled on by a judge in the near future, the problem that unreliable electricity creates for computer users is very real. Data General power supply designers and Field Engineering specialists have studied the problem. "Surge protectors and uninterruptable power supplies can protect against power surges," according to Dennis Symanski in Field Engineering in Milford, "but few large systems are fully protected."

The answer, according to the Coalition, is more generating capacity. That means encouraging cogeneration (private generation of electricity that is incorporated by utilities), more power from Canada (Hydro-Quebec), and the Seabrook nuclear power station, which is the only new power station built in New England in the past 11 years.

Many people are opposed to further use of nuclear power because of safety and hazardous waste disposal problems. Groups have been formed to oppose almost every alternative: nuclear, high-voltage power lines, coal-fired plants.

Data General wanted to find a way to be for, rather than against, more electric power, since everyone depends on it, according to Ed. "We thought it was time to be 'for' more electricity and encourage people to think about how to get more of it, rather than just knock it."

## **TEO/3D To Increase Efficiency At Dynamic Air**

Data General's TEO/3D three-dimensional modeling and database system is being installed at Dynamic Air Engineering, a leading manufacturer of air re-circulation and cooling systems for the aircraft and aerospace industries. Dynamic Air will use the system for mechanical design, drafting and manufacturing.

"TEO/3D will significantly increase our chances of winning bids by enabling us to complete designs, drawings, and bills of materials from 20 to 50 percent faster," says Hugh Morrison, executive vice president of Dynamic Air. "Of the systems we considered, it was the only package that could streamline our design and manufacturing process to the degree we required."

"TEO/3D was unique in that it could serve as a platform for mechanical design and manufacturing while being flexible enough for customization. We required

system that could be used for design, integrated with existing ECLIPSE MV/Family equipment, and eventually tied in with our computer-numerical control (CNC) equipment."

TEO/3D will communicate with the Dynamic Air's Data General ECLIPSE MV/4000 computer system, which runs accounting and manufacturing operations such as manufacturing resource planning (MRP II) and production control. By using TEO/3D, engineers will be able to create designs that can be loaded directly onto CNC equipment, eliminating the need for manual CNC programming.

The initial installation includes TEO/3D software and a DS/7500 engineering workstation linked via XODIAC (industry-standard, X.25-based networking software) to the ECLIPSE MV/4000 system.

"We have been a Data General user for 10 years and are truly impressed with its equipment, maintenance and personnel," Morrison concludes.

Dynamic Air Engineering, based in Santa Ana, California, manufactures environmental control systems -- re-circulation fans, cooling fans, and electric motors -- for a wide range of aircraft and military vehicles.

## Science Discovery Museum Underway

Data General has always been interested in education, not only for its employees, through the help of tuition reimbursement, but also for the children of employees, with annual scholarships. That dedication has been displayed again by a recent donation of \$10,000 to be used in the construction of the Science Discovery Museum now being built in Acton, next to the Children's Discovery Museum. The donation will help the museum reach its goal of \$1.2 million to complete construction of the 8,000-square-foot building.

"Data General has always been interested and involved with education, and this provides a wonderful opportunity to serve the community, and our employees within that community," says Dave Dimmick, Data General's Donations administrator.

While the Children's Discovery Museum attracts children from 1 to 6 years old, the Science Discovery Museum will be geared toward the 6-to-16 year age range. Both museums, however, were designed to provide hands-on learning experience.

"The theme of this new museum, obviously, is discovery. Children are encouraged to discover new things for themselves," says Don Verger, the museum's founder and executive director. "Kids won't be able to just push a button and see something happen. Instead, they will be able to hypothesize, and figure out how something works."

The Science Discovery Museum will house 10 different theme rooms which include water discovery, communication and sound, earth science, computer exploration, and an inventors' workshop. Don will design and

create most of the exhibits himself. Construction, which began in July 1986, is expected to be completed in the fall.

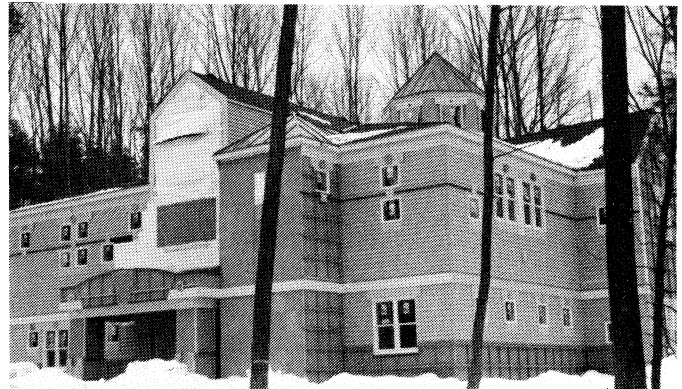
"Children will learn at the museum," says Anne Maley, director of Development and Public Relations for the museum. "Subjects such as math and science, which can be far from fun in school, will be encouraged and pursued in an entertaining way here. The Science Discovery Museum will have staff acting as 'Explainers' walking around, to serve as catalysts for children's imaginations."

According to Don, the building with its wide-open spaces, numerous windows and hidden nooks, will complement the exhibits and the educational philosophy behind the museum.

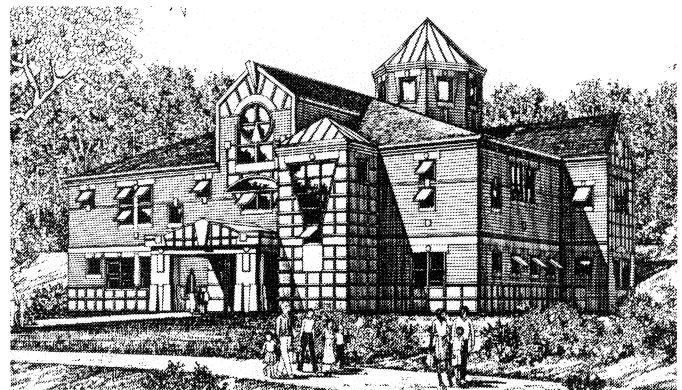
"Children will be able to interact with one another, and learn from each other, but they will also be able to explore on their own," Don says.

"Through this donation, we will be able to see the good that Data General has done," Dave says. "We can bring our families to the museum, and watch our children learn. That's very exciting."

An exact date has not yet been set for the opening of the new museum, scheduled for some time in the fall. *Mini News* will follow the museum's progress, and will present a feature article when the museum opens.



*Science Discovery Museum under construction*



*An artist's rendition of the museum*

## It's Town Meeting Time

This is annual Town Meeting time in Massachusetts, the time when budgets are decided and tax rates established.

Data General takes a keen interest in those rates because they clearly impact the company as a major taxpayer.

Town meetings are particular to New England and therefore may be unfamiliar ground to some employees. For your information, everyone who is a registered voter in Westboro or Southboro can attend a Town Meeting and vote on the articles presented. These articles cover budgets for police departments, highways, schools, absolutely every aspect of local government, and amount to millions of dollars. The discussions at these meetings are often long and laborious, but proponents of Town Meetings believe that this is the last true form of democracy in the U.S. One person, one vote.

The annual Town Meeting in Westboro was held this week, giving local residents an opportunity to decide exactly where to spend their money this year. The tax rate was likely to "go beyond \$17.00" according to the Finance chairman in Westboro. This would seem to suggest that along with the residents, Data General can expect to face a tax increase this year beyond the \$716,761 the company paid in 1986.

In Southboro, the Town Meeting is not until April 13. It is difficult to anticipate whether taxes there will rise, also. In 1986, Data General paid \$269,857 in taxes to the Town of Southboro and will watch the Town Meeting outcome with interest.

Milford does not have an open Town Meeting and has elected representatives to vote. Therefore, though residents can attend, that cannot vote.

If you have never been to a Town Meeting, this might be a good year to attend. There is sure to be plenty of discussion about dealing with growth and its impact.

## Data General Introduces Bar Code Terminal

Data General has introduced a bar code terminal to be used with Data General computers. The bar code terminal incorporates the functionality of the company's DASHER D215 display terminals with an integral bar code wand. In addition, an enhanced bar code selection menu allows users to activate multiple bar code formats simultaneously. This capability offers a flexible, versatile bar code system.

"Menu-driven bar code selection, combined with DASHER D215 functionality, makes the product suitable for medical, retail, inventory control, automated identification and other applications requiring fast and accurate keyless data input," says Jim Costello, product manager within the Special Systems group. "Data General's bar code terminal meets current industry requirements."

The bar code terminal features an integral bar code wand, menu-driven bar code selection, and a convenient bar code wand holder. Soft set-up simplifies installation by allowing variables such as parity, baud rate, bar codes, and terminators to be set by keyboard responses to menu prompts. An auxiliary printer interface provides for local or pass-through operation.

This product is priced at \$1595, and delivery is available within 90 days. Amber and green screens are available.

### Don't Get Left In The Dark

Lights at Data General's facility in Westboro are normally turned off at 11:00 p.m. This is done since there is no third-shift, as well as to keep utilities cost down. If you plan to work later than 11:00 p.m., inform Security at extension 6100. The department will see to it that your area remains lit until you go home. Also, be sure to inform Security when you leave, so they may be able to turn the lights off.

## Flags Welcome Visitors

When Data General's facility at 3400 Computer Drive becomes fully operational later this year it will be home to hundreds of people and a great deal of new equipment.

Included in this equipment will be a pair of flagpoles. They may not be noticed by many, but they serve an important role. Beside one for the U.S. flag, the other will fly flags of a different sort. As one has in front of the Building 14A lobby for the past two years, the pole will serve as a welcoming beacon to international visitors of Data General. While visitors for international businesses come to Data General to see demonstrations of the company's products, they first will notice their country's flag waving side by side the "Stars and Stripes."

Marlene Granderath, manager of Building 14A Guest Marketing area and the Executive Briefing Center, which will be located at 3400 Computer Drive, says, "As part of our welcome to international customers it is important to show respect for their country and an interest in their culture. Although it may not appear to be much, they are flattered to see their national symbol flying outside Data General. It's a familiar sight for some who may be many thousands of miles from home." According to Marlene, Data General has a selection of nearly 30 flags from countries as diverse as Zimbabwe, Denmark, Australia and Nigeria. In 1986 there were approximately 130 international customers visiting Westboro.

International customers are of increasing importance to Data General. For example, international revenues

for 1986 represented nearly 40 percent of Data General's total sales.

## Westborough/Northborough Area Scholarship Available

The Westborough/Northborough Area Chamber of Commerce, which Data General supports and participates in, provides four \$500 scholarships each year to graduating high school seniors who live in Northborough or Westborough. Applications are available at the local high schools or from Data General Public Affairs department at extension 4718 in Westborough. Application deadline is April 1.

## CPR Classes To Be Discontinued

The latest group of Westboro employees who have successfully completed the American Heart Association's National Cognitive and Performance examinations are:

Marguerite Krupp	Kenneth Lizotte
Skip Richards	Robert Manning
Ginny Stevens	Harriet Markert
Linda Kayla	Connie Marks
Jarlene Sundberg	Larry Powers
Michael Lerner	

Due to a shortage of teaching materials, the American Heart Association has notified all CPR instructors to discontinue classes after April. As a result, classes at Data General will resume in Westboro in September. Mini News will provide further information of upcoming classes.

## Training

### Courses Scheduled at Education Center

During the weeks of April 6 and 13, Educational Services will offer software and hardware courses to Data General employees. All classes will be held at the Education Center at 2400 Computer Drive in Westboro.

#### Software Courses

- *C Language: An Introduction* (SM131E) This three-day course introduces the "C" language as implemented under MV/UX and AOS/VS and covers data types, arrays, pointers, data structures, memory management, language syntax, I/O functions, data management and in-depth library I/O. High-level language programming experience is the prerequisite for this course. Class begins Wednesday, April 1.

- *COBOL Programming with DG/SQL* (S117E) is a five-day course that teaches how to write application programs for data in a DG/SQL relational database. The prerequisites for this course are recent COBOL programming experience and S209 (AOS & AOS/VS User). This class begins Monday, April 6.

- *AOS/VS System Performance Workshop* (SM412) teaches how to recognize the factors that are most likely to limit the performance of AOS/VS based systems and identify appropriate solutions to performance problems. The prerequisites for this four-day course are AOS/VS System Manager (S219VS) plus experience or AOS/VS System Programming, Part 1 (S309VS). Class begins on Tuesday, April 7.

- *Data General FORTRAN 77 Programming* (S113) is a five-day course that teaches how to code, compile, load, execute and debug programs using Data General's FORTRAN 77. Experience in FORTRAN programming is the prerequisite for this course. This class begins Monday, April 13.

#### Hardware Courses

- *MV/2000 DC System Operator* (S224) teaches how to operate and manage AOS/VS on an ECLIPSE MV/2000 DC system. Includes system startup, shutdown, monitoring and error recovery. Computer Concepts (S100) or equivalent knowledge of computer concepts is the prerequisite for this five-day course. Class begins Monday, April 13.

- *DG/SQL Utilization and Design* (S317) is a five-day course for AOS/VS users who need a working knowledge of DG/SQL. This course covers the structure and components of DG/SQL, creating and reorganizing a database, data dictionary utility, data manipulation language and more. AOS/VS User (S209) or equivalent experience is the prerequisite for this course. This class starts Monday, April 13.

- *ECLIPSE MV/15000 Field Maintenance* (H178) is a five-day course that provides a functional board-level overview of the ECLIPSE MV/15000 computer. The course covers information flow and control functions within individual boards, between boards and over system busses. The prerequisite for this course is H100/MV (Intro to 32-Bit Computers). This class begins Monday, April 6.

- *ECLIPSE MV/4000 Field Maintenance* (H148) teaches how to install and configure an ECLIPSE MV/4000 computer, load and run diagnostic programs and perform board-level maintenance. The prerequisite for this five-day course is Data General 32-Bit Computer Architecture (H100/MV) or equivalent experience. This class begins Monday, April 13.

To enroll in any training program offered by Educational Services, call tie line 221, extension 1647. The prior approval of your supervisor is required for course registration.

**SWAT Training For Programmers  
Scheduled For March 23, 24**

Educational Services will be testing a new SWAT Debugger CBT (Computer Based Training) course on March 23 and 24. This program is designed to teach programmers and system analysts how to utilize the SWAT Symbolic Program Debugger to analyze and debug user code written in Pascal, C, Cobol, or Fortran 77.

Test participants should be familiar with the general concepts of the AOS/VS operating system, the CLI environment, and at least one high-level language supported by the SWAT utility.

This training is free of charge to all qualified employees and will take place at 2400 Computer Drive. If you would like to learn how to use the SWAT debugger program by participating in this CBT test, contact Lillian Cochran at 221-1548 or via CEO at host system ZETA. Those wishing to participate should respond as soon as possible.

## Benefits

### **Open Enrollment Is Here**

Open enrollment for the Data General Medical Plan and all existing HMOs will be held throughout the month of March for a coverage effective date of April 1. Any employee wishing to make changes regarding medical coverage, including transfers among HMOs and the Data General Medical Plan and addition of dependent medical coverage, should contact their Benefits Administrator by March 31 to obtain the appropriate benefit forms. These forms must be completed and returned by Wednesday, April 1.

There will be no additional HMOs introduced during this enrollment period. Another enrollment period will be scheduled later this spring for an effective date of July 1. All new HMOs will be introduced at this time.

Healthway Medical Plan, based in Brockton, will no longer be available as of April 1.

### **Stock Moves Back To Westboro**

**Effective Monday, March 23**, the Employee Shareholder Services department will be returning to Westboro, from Hooksett, reporting to Suzanne Singer, Corporate Stock manager. Employees must mail their stock option exercise paperwork to Employee Shareholder Services, 4400 Computer Drive, Westboro, Mass. 01580, Mail Stop F-233. The CEO hotline is STOCK:HERA.

The Shareholder Services administrators are:

Linda Sandstrom: Group Leader, Extension 5696, Host HERA  
Leeann Pelissier: Stock Swaps and ISO Billings, Extension 5602, HERA  
Claudette Boule: A-K and all International, Extension 5622, HERA  
Julie Gallagher: L-Z, Extension 5676, HERA

## Activities

### **Data General Day At Sturbridge Village March 22**

This Sunday, March 22, is Corporate Appreciation Day at Old Sturbridge Village. On that day, Data General employees will be admitted free (by presenting their badge), and guests will be admitted for \$4.00 (regular admission is \$8.50). Admission for children six and up is \$4.00, and children under six are admitted free of charge.

The village will be open from 10 a.m. to 4 p.m. No advance reservations are required. Tickets may be purchased at the main entrance to the village.

### **Data General Caribbean Cruise:**

The Data General Employee Activities Committee is planning a seven-day Caribbean cruise for Data General employees and their guests aboard the Cunard Line's "Countess" October 3. The fare, starting at \$948 per person/double occupancy, will include roundtrip ground transportation between Westboro and Logan Airport, roundtrip air transportation between Logan and San Juan, Puerto Rico, all meals and snacks, a Data General cocktail party aboard ship, a welcoming bottle of champagne and on-board entertainment. The cruise will sail from San Juan to Tortola, St. Maarten, Guadeloupe, Antigua and St. Thomas.

If you want more information on the cruise, the Employee Activities Committee will hold a "Caribbean Cruise Night" at the Westboro Marriott Hotel next Tuesday, March 24, from 7:00 to 10:00 p.m. The evening will include a film describing the Cunard Cruise Line, refreshments with a cash bar, door prizes and a staff to answer any questions you may have about cruising. If you plan to attend, please contact Crimson Travel Service, and ask for Candy Boyde at (617) 742-8500 (RSVP). If you have any questions, contact Peter Faford at extension 6776 or Mail Stop D-232 in Westboro.

**Data General Wallyball League**  
 1986 - 1987 Season Standings  
 Thru 3/10/87

**Competitive Division**

Team #	Team	Won	Lost	Tied	Match Points
6	Moura's	47	1	3	97
5	Insecurity	40	6	5	85
4	Waybacks	34	12	2	70
7	New Generation	16	25	4	36
1	Tough Ice Cream	15	32	1	31
2	CADgers	13	36	2	28
3	Data Who	13	34	1	27
8	Over the Hill Gang	7	39	2	16

**Semi-Competitive Division**

Team #	Team	Won	Lost	Tied	Match Points
10	Corporate Materials	39	9	3	81
13	Misfits	39	12	3	81
11	Flexible Flyers	36	18	0	72
12	Grim Reapers	19	32	0	38
15	Wall E. Cleavers	9	39	0	18
14	Team X	8	40	0	16

**Recreational Division A**

Team #	Team	Won	Lost	Tied	Match Points
22	Wallbangers	43	7	1	87
28	St. Anns Girls Choir	38	11	2	78
20	Commfursion	27	19	2	56
16	Hacs	25	18	2	52
21	Stephanie & The Boys	19	29	0	38
18	CADavers	17	37	0	34
17	Karnaugh Knowledge	13	30	2	28

**Recreational Division B**

Team #	Team	Won	Lost	Tied	Match Pts
23	Ballbusters	35	16	3	73
24	WCIF	36	17	1	73
26	Court Jesters	32	18	1	65
19	Nerf	19	28	1	39
25	Committed	17	33	1	35
29	Stiff Joints	11	40	0	22
27	Klass Act	11	40	0	22

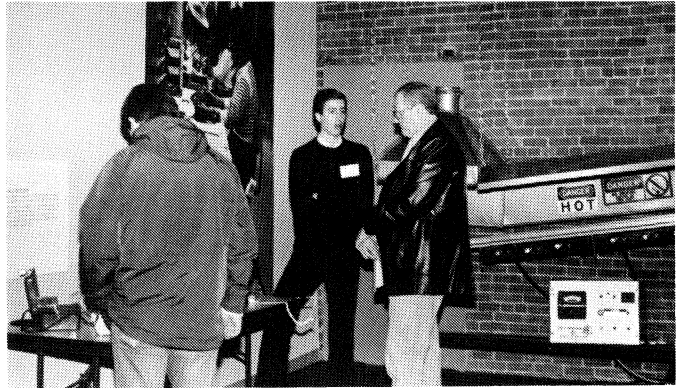
**Data General Day  
 At The Computer Museum**

On Saturday, more than 225 Data General employees and their guests enjoyed a day at the Computer Museum in Boston, the world's first and only museum devoted solely to computers and computing.

Throughout the day, Brad MacLean, New Products senior engineer, and Simon Longson, senior Manufacturing engineer, were on hand to explain one of the exhibits that features Data General equipment. Both from Portsmouth, Brad and Simon showed visitors the history of how Data General makes printed circuit boards, from initial concept to the board's final assembly in a complete Data General computer.

At the museum, special presentations of Data General's latest Corporate Portrait, often used to introduce customers to the company, were shown continuously to employees and all visitors.

Below are photographs of Data General's day at the museum. The museum offers many hands-on exhibits which appeal to both children and adults.



## MARKETPLACE

### CARPOOL

**Ride**, from Whitinsville to Westboro, Rosemary x5615.

**Ride**, from Marlboro to Milford, 8:00-8:30 to 5:00-5:30, Helen x2137.

### FREE

**Old English Sheepdog**, well-trained; 4yr old "puppy". 393-3198 (Northboro).

### FOR RENT

**Townhouse**, Webster, 2 bdrms.; 1 1/2 baths; fully appl.; including MIC, W&D, central air & vac; no pets. \$650 943-1018 (Webster).

**Condo**, 1 bdrm; 3 min. from Data General; large walk-in closet, tennis, pool, fully appl. kitchen. \$550/mo includes heat. 393-9316 (Northboro).

**Apartment**, 2nd floor of duplex; 2bdrms, 2 porches; yard; convenient to public trans. minutes from Harvard square, Concord ave., Belmont. avail. April 1st. \$750/mo. 489-0159 leave message (Belmont).

**Summer Rentals**, Salisbury Beach; \$200 - \$435/wk. 1-603-893-3464

**Condo**, 2bdrm; 1st floor; has washer,dryer,security system; 25 min. to DG. easy access to Rt 290. \$525/mo. 757-2535 (Worcester).

**Ski House**, Killington; 3bdrms; 2 baths w/jacuzzi. 267-6695 (Boston).

**House**, Hopkinton, 3-4bdrms; Close to 495; appliances; short term 435-4077 leave message (Hopkinton).

**Apartment**, Quiet area in Linwood; 3 rms; electricity, stove, frig. included. \$325/mo. & sec. dep. 234-6769 (Northbridge).

**Apartment**, Grafton St. area, Worcester; 3rm; appliances; carpeting; A/C; off-street parking; no pets; no util.; security dep. req. 754-5916 (Worcester).

**House**, Cape Cod; 3-bdrm. Near Seagull beach. West Yarmouth. \$650/wk 529-3434 (Upton).

**Condo**, Waterville Estates, NH, Close to W'ville, Loon, Cannon Mtns., available wknds or by wk. 769-2355 (Norwood).

### WANTED

**Day Care**, For 21 month old girl; 9:00 am. - 5:00 pm. in Westboro, Southboro area. 485-2701 (Southboro).

**Item**, Radial arm saw. 865-3667 (Millbury).

**Summer Rental**, House on lower Cape Cod near Eastham for one week. 6/27 thru 7/18 or 8/15 - 8/22. 965-1022 (Newton).

**Roomate**, Male, non-smoker to share 3bdrm townhouse in Windsor Ridge; \$307/mo. incl. heat. available immed. 870-0473 or 870-6375 (Westboro).

**To Rent**, Int'l coop student seeks accomodations on a short term basis. Boston area pref. Dependent on carpool avail. to Milford. 853-4306 after 8:00 p.m. (Worcester).

### FOR SALE

**Items**, Octa-bench home exercise center, complete w/weights; \$75; TV/VCR cabinet w/compartments for VCR storage-swivel base; \$60/BO. 799-4949 (Worcester).

**Dirt Bikes**, (2); one red; one blue; Raleigh Racing. \$95 each. 443-8343 (Sudbury).

**Dryer**, Sears kenmore; heavy duty; apartment size. \$75/BO. 529-4627 (Upton).

**Twin Beds**, Nautical type w/2 drawers each on the bottom. \$200 473-6191 (Hopedale).

**Dining Room**, Circa 1948; solid mahogany; glass front china; buffet; dual pedestal table w/leaf; no chairs; matching mirror. \$300/BO. 562-6861 (Hudson).

**Truck Cap**, Aluminum; 33" x 8' x 6' w/ladder racks for full size truck. \$250/BO. 528-6781 (Franklin).

**Bedroom Set**, Walnut; dresser w/mirror; chest of drawers; two night tables; headboard & footboard. \$280 368-1958 (Clinton).

**Ski Racks**, silver color; \$50 829-5272 (Jefferson).

**House**, 6 room Gambrel w/attached garage; 1 yr old; 6 acres. \$165,000 476-2518 (Douglas).

**Ring**, Emerald ring; 14k gold setting; diamond on either side of emerald. \$500/BO 877-7089 (Framingham).

**Golf Clubs**, Complete set of right-handed woods and irons. 665-9296 after 6:30 p.m. (Stoneham).

**Riding Lawn Tractor**, Sears 10 H.P., 36"; varidrive w/electric start. \$550 826-6689 (Hanover).

**Ring**, Ladies 14k yellow gold diamond ring; pear shape; .33 wh/mh. appraised at \$775, will sell for \$595. 853-0889 (Worcester).

**Amplifier**, Alpine power amplifier, fits all cars & trucks. 853-0889 (Worcester).

**Water Pump**, Craftsman premium 1/2 hp. jet water pump; 1yr old. \$150/BO.; 1/2 hp. Myers pump. \$25/BO 865-3667 (Millbury).

**Dining Room Set**, 9 piece formal set; incl. china/buffet server, table w/leaves & custom pad; 6 chairs. New \$10,000, asking \$3000 firm. 374-8433 (Bradford).

**Items**, Used gold hotpoint electric stove; best offer; Used speedqueen gas dryer, best offer. 234-2081 (Whitinsville).

**Item**, Back machine and weights. Used twice. \$10/BO 481-1540 after 7:00 pm. (Marlboro).

**Trailer**, Highlander galvanized boat trailer. 1000lb capacity. used 5 times. 237-6233 (Wellesley).

**Cottage**, Saltwater front - Cape Cod; 2bdrm furnished; 10x20 deck; w/access to Nantucket Sound. \$145,000. 540-3176 (Falmouth).

**Item**, Tectronix type 506 oscilloscope; dual trace. Needs repair. \$60/BO. 839-3441 (Grafton).

**Stereo**, JVC 25w fully-digital receiver; \$120; Fisher dual-cassette deck w/high-speed dubbing \$80 852-5624 (Worcester).

**Table**, Toddler school table, 8ft. kidney-shaped w/adjustable legs \$160 852-5624 (Worcester).

**House**, 3-bdrm ranch, in-ground pool, 2-car garage, 1+ country acres, 10 min. to Rt. 495, \$140,000. 883-1133 (Blackstone).

**Condo**, 2-3 bdrms, 2 baths, garage, x-tra storage, includes microwave & custom drapes, \$142,000. 881-1529 (Ashland).

**House**, 6+ rms, 3 bdrms, cellar, garage, Rt. 27 (1/4 mi. from Rt. 3). 603-622-4224 (Hooksett, N.H.).

**House**, 8 large rooms in executive Northboro neighborhood, reduced to \$189,900. 393-3285 (Northboro).

**House**, Country split-entry, 15 yrs old, 7 rms, in-ground pool, easy access to Rt. 290/2. 537-9636 (Leominster).

### AUTOS

'62 Chevy Impala, 283 V8; automatic; one owner \$1300. 365-4783 (Clinton).

'73 Super Beetle VW, \$250/BO. 366-1968 (Westboro).

'76 Monte Carlo, V8, PS/PB; AM/FM. \$1,366-6554 (Westboro).

'76 Datsun B210, 2dr hatchback; auto.; reliable trans. \$350. 865-9695 (Sutton).

'77 Dodge Apens Wagon, low mileage; needs some body work; 234-6769 (Northbridge).

'77 Plymouth Volare Wagon, \$695. 234-9647 (Whitinsville).

'78 Mercury Bobcat, 60k mi.; orig. owner; automatic. 365-3598 (Clinton).

'78 Camaro, V8, 305 engine; spoiler, sunroof, 4 chrome rims; AM/FM cass., 5 spare tires & rims. \$2500 753-2921 (Worcester).

'79 Mazda GLC Wagon, 5 speed; 84k mi.; 29 mpg.; Grey; \$995/BO 485-7730 (Marlboro).

'80 Toyota Corolla, 4 dr; silver, auto. trans; A/C, AM/FM stereo \$2400/BO 877-5149 after 7:00 pm. (Framingham).

'81 Chevette, 4dr; auto.trans; 36k mi.; \$1600 879-5919 (Framingham).

'82 Yamaha Seca 750, Metallic grey; less than 1000 mi., lock & cover included. \$2000 firm. 877-0701 (Framingham).

'82 Suzuki GS1100GK Motorcycle, Full dresser; many extras; new tires; battery & tune up; 20k mi. \$3150/BO. 852-3380 (Worcester).

'83 Chev. Malibu, 6 cyl.; A/C; AM/FM stereo; cruise control; new radials; 2-tone brown. 540-3176 (Falmouth).

'83 Ford Escort Wagon, PS/PB; AM/FM stereo; new exhaust; well maintained. \$2,529-3418 leave message (Upton).

'83 Ford Escort GL, 2dr hatchback; AM/FM stereo; 2-tone beige; rear defogger; automatic; 38,000 mi., \$2900/BO 562-7413 (Stow).

'84 Ford Escort L, New England edition; 4cyl.; 2 dr. hatchback, auto trans.; 38k, AM/FM stereo; new radials. \$3000 368-1432 (Clinton).

'85 AMC Eagle, 4wd, V6, PS/PB; 4dr.; tilt wheel; stereo, 1 owner 18k mi. must sell 366-7283 (Westboro).

### HOURS

**Westboro Cafeteria**, full breakfast, 6:30 a.m.-10:00 a.m.; lunch, 11:30 a.m.-1:30 p.m.; open from 6:30 a.m.-3:00 p.m. for beverages.

**Pizzeria**, serving from 10:00 a.m.-2:00 p.m.

**Pumpernickel's Deli**, Coffee & pastries, 6:30 a.m.-7:30 p.m.; full breakfast, 6:30 a.m.-10:00 a.m.; deli lunch, 11:00 a.m.-2:00 p.m.; Take-out, 3 p.m.-6:30 p.m.; dinner, 5 p.m.-7:30 p.m.

**Milford**, full breakfast, 6:30 a.m.-8:30 a.m.; lunch 11:15 a.m.-1:15 p.m.; open from 6:30 a.m.-3:15 p.m. for beverages.

**Southboro**, full breakfast, 6:30 a.m.-10:00 a.m.; lunch 11:15 a.m.-1:00 p.m.; open from 6:30 a.m.-3:00 p.m. for beverages.