

# Mini News

## News For The Employees of Data General

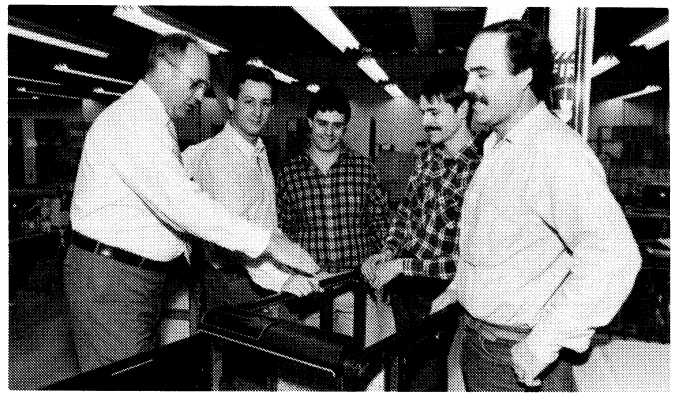
---

March 6, 1987

### Safety Reminder

The Facilities department would like to remind employees to call the Security department at extension 6100 immediately after using any fire extinguishers in 2400, 3400 or 4400 Computer Drive. The extinguishers are checked once a month, and if usage is not reported, employees run the risk of not having adequate equipment should a fire break out. Extinguishers are located every 500 square feet in all three buildings. Classes in the proper use of fire extinguishers are held every summer. For more information, contact Bob Knight in Westboro at extension 6132 or via CEO host system ATLAS.

### DGConnect Wins Big



*Special Systems Manager Dick Manion congratulates Manufacturing employees on a job well done. From left are Dick, Jim Shea, Production Control manager, Dan Vient, Ken Jean, and Paul Moura, Manufacturing engineers within Special Systems. Their project, DGConnect, recently surpassed the half-million-dollar mark.*

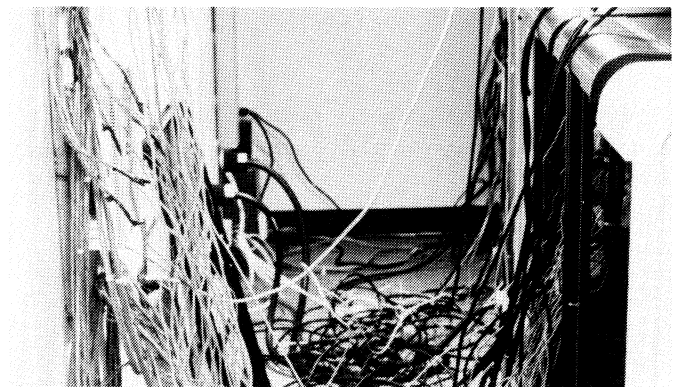
### America's Cup Winner To Speak To Employees

Dick McCurdy, the computer designer and systems analyst for the *Stars & Stripes '87*, the 12-meter yacht that regained the America's Cup from Australia last month, will speak to Data General employees next Thursday, March 12, from 4 to 5 p.m. in the Westboro cafeteria.

Dick, the president of Ockam Instruments of Milford, Connecticut, developed the software used with the DATA GENERAL/One computer on board the yacht. The system provided the crew with tactical information, such as analysis of wind and boat speeds. Dick, a 17-year veteran of America's Cup racing, began using Data General equipment in 1974.

Regarding the portable computer, Dick says, "The DATA GENERAL/One has all of the characteristics necessary for a computer system at sea on a racing yacht. It is portable, light in weight, easy to use and very powerful. Of all of the comparable computers, it has the most easily-read screen."

Wayne Fitzsimmons, vice president for Americas/Far East, will host the hour-long program, during which Dick will demonstrate the software and answer questions from employees. All employees are invited.



*A typical computer room before the use of DGConnect. DGConnect eliminates cable clutter, and allows for greater ease of configurations.*

Sometimes the best solutions are the most obvious. That is what happened within Data General's Special Systems group in Southboro. Over a year ago, Special Systems sought to clear up some of the clutter in their software development computer room. There were more than 200 cables connecting the terminals and peripheral devices of the three computers used by development engineers. As David Wilson, director of the Special Systems group, recalls, "The 'cable clutter'

had to be cleaned up. In the process, we realized there may be an opportunity for a new Data General product, since many of our customers would most likely have the same concerns in their computer rooms. Cable clutter is a particular issue in an environment where the system configuration changes fairly regularly."

The result was a product called DGConnect, a device which connects a large number of communication devices and lines, all housed in a cabinet coordinated with an ECLIPSE computer. All lines, communication ports and peripheral locations are easily identified. There are facilities for reconfiguring the system, and for cross-connecting more than one computer in a system, as well.

"The primary purpose of DGConnect, simply, is to reduce computer room clutter and provide our customers a more flexible means of reconfiguring their systems," says Mike Boyko, Engineering Services supervisor.

According to Dick Manion, Special Systems Operations manager, DGConnect enables users to switch among systems in a cost-effective manner. "We have to compete in the marketplace on price as well as functionality. With DGConnect, we're selling performance at a competitive price. We must be able to ship the system in the same timeframe as the computer system. The customer must have the product within two to four weeks of placing the order."

DGConnect has been well-received by customers since it was introduced. It has generated several hundred thousand dollars in sales, recently passing the half-million-dollar mark.

### **A Typical Situation**

DGConnect is typical of the situations where the Special Systems group provides a capability that enables Data General to meet with a customer's total needs.

The group has developed a wide range of equipment, both as part of a catalog of "standard specials," and as specific designs to meet very specific customer needs. Products range from a simple interface to very complex computer systems.

Some major Special Systems customers are General Electric, Interstate Electronics, Kodak, and Calma. The group has developed products such as the ECLIPSE/MV 4000DC, ECLIPSE/MV 7800DC, array processors, intelligent communications printed circuit boards, and high-performance tape drives.

The experience and capabilities of the team of Special Systems engineers, technical marketing specialists and manufacturing employees provide Data General customers with solutions to their unique needs. In addition to the Southboro location, marketing staffs are located in Paris and London.

## **X.400 For CEO Mail Complies With International Standard**

Data General has introduced DG/X.400, a product which lets users of CEO comprehensive electronic office software exchange electronic messages with users on other companies' X.400-compliant systems.

X.400 defines a common interface between diverse office systems, providing a way for different companies to communicate electronically. Data General's new product is based on the CCITT X.400 standard recommendations for message-handling systems.

According to Joe Forgione, manager of the Data General Communications Product Marketing Group, "With increased office automation and the growth of CEO, more and more of our customers' business is conducted electronically, involving international companies, regional offices, their employees, their customers and their suppliers.

"Our customers need to send messages between groups with hardware systems from a multitude of vendors. X.400 is significant because it offers a viable messaging standard allowing diverse multi-vendor system communications."

X.400 messaging is particularly important in Europe where all public electronic mail services of the Post Telephone & Telegraph (PTT) utilities support X.400.

The price for DG/X.400 is based on the computer it is integrated with. Prices range from \$660 for DG/X.400 for a DS/7500 engineering workstation to \$10,450 for DG/X.400 for use with an ECLIPSE MV/20000 computer.

DS/7500 --- \$660.	MV/15000-8 -- \$5500.
MV/2000 --- \$1375.	MV/15000-10 - \$7150.
MV/7800dc - \$1650.	MV/15000-20 - \$8250.
MV/7800 --- \$2750.	MV/20000 -- \$10,450.

## **Statistical Technology Gets New Curriculum**

The use of Statistical Technology, which supports the prevention versus detection approach to quality, is not new to Data General. It was nearly three years ago when these concepts were introduced within the company. Employees adhering to Statistical Technology have contributed to higher quality products.

To further fine-tune employees' understanding of using statistics to enhance quality, Data General has introduced a new comprehensive curriculum for Statistical Technology. The curriculum, brought about through the efforts of the Committee for Statistical Technology (CST), with assistance from the Manufacturing Technology Institute (MTI), was created to provide the right training for the right people in statistical methods.

Several courses have been prepared which cover a wide range of "statistical tools." The initial emphasis is

to provide a basic education in "statistical thinking" along with skills training in a few fundamental techniques. If you want further information, contact CST representative Karen Davis. You can contact her at extension 4927 or via CEO host BLUTO.

The courses that are now being offered are different from past SPC training in several ways. For example, the courses have been unified throughout Data General manufacturing. The same course is taught the same way in each facility. The new curriculum has been designed based on the concept of "learn a little, do a little." The courses have been developed by Data General employees for Data General employees. In addition, whenever possible, examples, exercises and workshops use data and/or case studies from real situations within the company. The material, therefore, becomes more meaningful to Data General employees.

A more important difference is the way these courses will be taught. Classroom training will be followed by on-the-job training. The instructor will spend some time with the students applying the tools learned in class. As a result, training will take place in one area of a facility at a time.

Training has already started in several Manufacturing facilities. However, statistical technology is not restricted to manufacturing applications. The techniques work equally well in administrative and support areas. The first Westboro class, S-300 SPC Fundamentals, is scheduled to start Monday, March 9. It will consist of seven half-day sessions every other day. For more information, contact Karen Davis at extension 4927.

Courses currently available include S-100 SPC Orientation, S-200 SPC Mathematics, S-300 SPC Fundamentals, S-300/701 SPC Fundamentals With Coaching, and S-500 Engineering Statistics, and S-701 Coaching SPC.

Future courses being considered include: Troubleshooting/Analyzing, Variables Control Charts, Analyzing Time-Related Data, Analysis of Variance, Multiple Regression, and Experimental Design.

## **Taback Named Division Director Of Newly-Formed SDD Group**

The Technical Systems Development group has been formed within the Systems Development Division (SDD) in order to provide a focus for the development of industry-standard technical and scientific computing solutions.

**Mike Taback** has been appointed division director of the new group, which is based in Westboro. Mike comes to Data General from Calma Corporation, where he was vice president of engineering for the past four years. While there, Mike was responsible for developing all of Calma's CAE/CAD/CAM products.

Prior to Calma, Mike was vice president of engineering for a CAE start-up company, where he built an engineering group and took the initial product from

concept to market within a year. Prior to that, Mike held senior managerial positions with ESL Inc., a subsidiary of TRW which manufactured advanced image and signal processing equipment.

Mike holds master's and bachelor's degrees in electronic engineering from the University of California.

Mike will report to SDD Vice President Tom West.

## **Activities**

### ***Data General Has Day Amid High-Tech History***

Within its walls glow the vacuum tubes that control the largest computer ever built, known as SAGE. Visitors marvel at a pocket-sized calculating device that did not come from the local electronics store, but from an early 17th-century inventor. Youngsters and their parents "paint" a picture with a mouse and a computer screen. Others examine a 28-year-old aluminum ashtray, the first object produced using computer-aided design.

Exhibits such as these are among the many sights at the Computer Museum in Boston. One week from tomorrow, on March 14, Data General employees and their families will be admitted to the only museum of its kind free of charge just by presenting their company badge.

At the museum, special showings of Data General's latest Corporate Portrait, often used to introduce customers to the company, will be show to employees and all visitors. Data General employee volunteers will also be on hand to explain the museum's manufacturing exhibit, which demonstrates how Data General, and many other companies, once manufactured computers, from bare boards to finished product. This exhibit uses an ECLIPSE C/330 computer.

Other exhibits centered around Data General computers include an Image Gallery, where visitors may use the system to paint by number, and the Personal Computer Exhibit, where a mouse and tablet allow visitors to create pictures from scratch. Both are based on DESKTOP GENERATION systems.

The Computer Museum is located on Museum Wharf at 300 Congress Street, right next to the Children's Museum. To get there, follow Museum Wharf signs displaying the wharf's landmark giant milk bottle.

- From North: Expressway (Route 3) south to Exit 23 (High and Congress Streets); third left onto Congress Street and across bridge.
- From South: Expressway (Route 3) north to Atlantic & Northern Avenues Exit; immediate right over Northern Avenue Bridge.
- From West: Mass Pike (Route 90) to Expressway north (Route 3) to Atlantic Avenue Exit; right over Northern Avenue Bridge.

The museum is open from 10 a.m. to 6 p.m. Public parking is available on Sleeper Street, across from Victoria Station Restaurant, and other lots in the area. Do not park at Victoria Station or your car is likely to be towed. Cameras are not allowed in the museum.

## MARKETPLACE

### CARPOOL

**Join Form**, from Brookline to Sobo/Webo, Flex. Katz x7093.

**Ride**, from Whitinsville to Westboro, Rosemary x5615.

**Ride**, from Marlboro to Milford, 8:00-8:30 to 5:00-5:30, Helen x2137.

**Join Form**, from Nashua NH to Westboro, Elizabeth x5179.

### FOR RENT

**Apartment**, Hamilton St. area; 6 rms; newly remodeled; off-street parking. \$475 + util. 795-1971 (Worcester).

**Condo**, Worcester; 1-bdrm. Top floor. 20 minutes from DG Webo. Has washer & dryer. Like new. \$475/mo. + util. 568-0155 Leave message. (Hudson).

**House**, Cape Cod; 3-bdrm. Near Seagull beach. West Yarmouth. \$650/wk 529-3434 (Upton).

**Apartment**, 1st floor, 3-bdrms. Near Rts. 9 & 290. 799-6873 (Worcester).

**Condo**, Worcester; 2-bdrm. 20 minutes from DG Webo. Top floor. Like new. \$575/mo. + util. 568-0155 Leave message. (Hudson).

**Condo**, 1-bdrm. Fully appl kitchen. Pool, tennis. 3 minutes from DG. \$550/mo incl. heat. 393-9316 (Northboro).

**Apartment**, 3 rms, 1-bdrm, lg yard, residential area, no pets. \$475+ 481-0132 (Marlboro).

**Apartment**, 4 rms, 2-bdrms, lg yard, residential area, no pets \$575+ 481-0132 (Marlboro).

**Condo**, Waterville Estates, NH, Close to W'ville, Loon, Cannon Mtns., available wknds or by wk. 769-2355 (Norwood).

### WANTED

**Van**, Running condition. \$2000 range. 485-4007 (Marlboro).

**House**, To rent. 2-3 bdrms in Northboro area. Need A.S.A.P. 393-3954 (Northboro).

**Scaffolding**, suitable for house painting. Will buy or rent. 435-6780 (Hopkinton).

### FOR SALE

**Canopy Bed**, Queensize.; brass. \$1000 839-6449 (Grafton).

**Livingroom Set**, Camel back sofa; loveseat; chair. Tan velvet. \$1000 839-6449 (Grafton).

**10 Speed Bike**, Mens, Metallic blue; "Free Spirit". \$70 call after 6:00 366-2412 (Westboro).

**Emerald Ring**, 14k gold setting; diamond on either side of emerald. \$500/BO. 877-7089 (Framingham).

**Snowmobile**, 71 yamaha 340; evinrude w/reverse gear; double trailer. \$1595/BO. 883-3245 (Blackstone).

**Drum Set**, Tama swingstar; 5pcs.; power toms; 6", 8", 10" roto toms; Zildjian cymbals; cowbell; stick bag. \$1500 485-4007 (Marlboro).

**Pearl Grandfather Clock**, Moondial, choice 4 chimes, 1yr old. Paid \$1200, asking \$800/BO. call after 6 865-1596 (Millbury).

**Tandy 1000 Computer**, 384k memory; 2 disk drives; 10 meg hard drive; Lotus 123 included. 791-1551 (Worcester).

**Baby Accessories**, \$20/BO. 877-8111 (Framingham).

**Colecovision**, 11 cartridges. \$165/BO. 877-8111 (Framingham).

**Fiberglass Sailboat**, 23'; new outboard; 4 sails; stove; sleeps 4 trailer; VHF marine radiophone, many extras. \$5300 435-6780 (Hopkinton).

**Item**, Brand new 1200 baud, fully Hayes compatible internal modem. \$80/BO. 877-3424 (Framingham).

**Microwave oven**, Kenmore, 1.4 cu.ft. Cooking power 90-625 watts. 80 programmable recipes, timer and clock. Paid \$599, sell for \$300/BO. 435-6767 (Hopkinton).

**Waterbed**, Super single, full motion, \$100 797-3543 (Worcester).

**Sears Woodburning Stove**, with blower, pipes, cap, and wood. \$200 792-3983 (Worcester).

**A.K.C. Golden Retriever Pups**, 5-females, 4-males, shots & wormed. Ready March 3rd. \$350/male, \$375/female. 829-5482 (Holden).

**Townhouse Condominium**, 1 yr. old, 2-bdrm, living rm, dining rm, eat in kitchen, 2 half baths, 1 full bath, central air. 1400 sq.ft. \$122,900 966-3125 (Bellingham).

**Livingroom Set**, couch, loveseat, chair, rust & off white pattern, coffee table, 2-end tables. \$150/BO. 987-1005 (Oxford).

**Waterbed**, King sz. looks like regular bed, uses regular frame (not included), includes heater. \$200. 366-1681 (Westboro).

**Electric Organ**, Thomas w/cords and harmony. Must sell. \$500 234-6876 (Northbridge).

**Upright Piano**, Sounds ok. B.O. 861-8625 (Lexington).

**Sofa**, Plaid sleep sofa (dbl bd). Never used. \$200 966-0316 (Bellingham).

**Snow Blower**, Electric. \$50/BO 966-0316 (Bellingham).

**Camera**, Chinon, XL-555, macro, power zoom, super 8 movie camera, used for 5 film cartridges. \$75/BO. call after 7. 567-6882 (E.Boston).

**Sony Trinitron Stereo TV**, 19" w/remote; 1yr old. Includes 3-yr extended warranty. Must sell \$550. 626-2356 (Framingham).

**Healthclub membership**, couples membership 1/2yr, nautilus, racquetball, etc. moving-must sell. \$210/BO for couple. 898-3224 (Westboro).

**House**, 3-bdrm ranch, in-ground pool, 2-car garage, 1+ country acres, 10 min. to Rt. 495, \$140,000. 883-1133 (Blackstone).

**Condo**, 2-3 bdrms, 2 baths, garage, x-tra storage, includes microwave & custom drapes, \$142,000. 881-1529 (Ashland).

**House**, 6+ rms, 3 bdrms, cellar, garage, Rt. 27 (1/4 mi. from Rt. 3). 603-622-4224 (Hooksett, N.H.).

**House**, 8 large rooms in executive Northboro neighborhood, reduced to \$189,900. 393-3285 (Northboro).

**House**, Country split-entry, 15 yrs old, 7 rms, inground pool, easy access to Rt. 290/2. 537-9636 (Leominster).

### AUTOS

'76 Pinto, \$600/BO. 966-0316 (Bellingham).

'77 Buick Regal, V6, AM/FM stereo, rear defogger; 106k mi. \$1100/BO. 943-9522 (Webster).

'77 GMC Truck, 6 cyl, 90k mi, \$1500. 842-8791 (Shrewsbury).

'77 Plymouth Volare Wagon, \$895 234-9647 (Whitinsville).

'78 Ford Mustang II, 4 cyl, 90k mi., one owner, \$800/BO. 401-333-5593 (Cumberland RI).

'79 Chevy Monza, 4 cyl, 4 spd, 2dr hatchback, AM/FM cass. original owner. \$850/BO. 966-1861 (Bellingham).

'80 Chevy Malibu Sport Coupe, 2dr, V6, AT/PS/PB; sun roof; styled wheels; AM/FM cass; Grey 67k mi. \$2095/BO 473-5739 (Milford).

'80 Toyota Corolla, 4dr, silver, auto. trans, A/C, AM/FM stereo. \$2400/BO 877-5149 (Framingham).

'80 Toyota Corolla, 4dr, 5 speed, white w/tan interior, 66k mi, spare snow tires on rims, \$2100 839-5181 (Grafton).

'81 Renault, 4 cyl. 5 speed, 65k mi. \$1200 485-4007 (Marlboro).

'81 Chevette, 2dr, 4 spd, 41K mi., AM/FM stereo w/cass. New clutch, brakes & shocks. \$1500. Natick (653-9027).

'82 V.W. Rabbit, Standard, 2-dr. High mileage. \$700 852-6002 (Worcester).

'82 Suzuki GS450L, 6500 mi., black. \$700/BO 865-5921 (Sutton).

'82 Olds 98, 4dr, AT, PS, PB, PW, AC, Pseat, and many other extras. \$4475. Natick (653-9027).

'84 Nissan 200SX Turbo, 5-spd, PS/PB/PW/PM, digital dash, sun roof AM/FM cassette, alarm system, etc., \$8500/BO 345-6936 (Leominster).

'84 Toyota SR5, 4-wheel drive, 5-spd, AM/FM radio, 50k mi, X-tra cab. 839-5844 (S.Grafton).

'84 Mazda 626LX, 2 dr., stereo w/cass., AC, FRwd, 50,000 mi., \$7200/BO. 869-6092 (Boylston).

'85 AMC Eagle, 4wd, V6, 4 dr, tilt wheel, stereo, PS/PB, 1 owner, 17k mi, must sell. 366-7283 (Westboro).

'85 Toyota Celica GT Liftback, 5 spd., cruise control, AM/FM/cassette, alloy wheels, power mirrors, 19K mi., \$9000/BO, 478-6827 (Milford).

'86 Chevy Spectrum, 5 spd., 10k mi., air, P/S, AM/FM cass., rear window defogger and wiper, hatch back, z-lock, warranty till July. \$6300 485-6159 (Marlboro).

'86 Mustang LX, 15k mi, PS/PB, power locks, sun roof, air cond., moving-must sell, \$7300. 898-3224 (Westboro).

'86 Pontiac Fiero, Red, 17,000 mi. \$8,500/BO 339-5926 after 5 p.m. (Mansfield).

### HOURS

**Westboro Cafeteria**, full breakfast, 6:30 a.m.-10:00 a.m.; lunch, 11:30 a.m.-1:30 p.m.; open from 6:30 a.m.-3:00 p.m. for beverages.

**Pumpernickel's Deli**, Coffee & pastries, 6:30 a.m.-7:30 p.m.; full breakfast, 6:30 a.m.-10:00 a.m.; deli lunch, 11:00 a.m.-2:00 p.m.; Take-out, 3 p.m.-6:30 p.m.; dinner, 5 p.m.-7:30 p.m.

**Milford**, full breakfast, 6:30 a.m.-8:30 a.m.; lunch 11:15 a.m.-1:15 p.m.; open from 6:30 a.m.-3:15 p.m. for beverages.

**Southboro**, full breakfast, 6:30 a.m.-10:00 a.m.; lunch 11:15 a.m.-1:00 p.m.; open from 6:30 a.m.-3:00 p.m. for beverages.