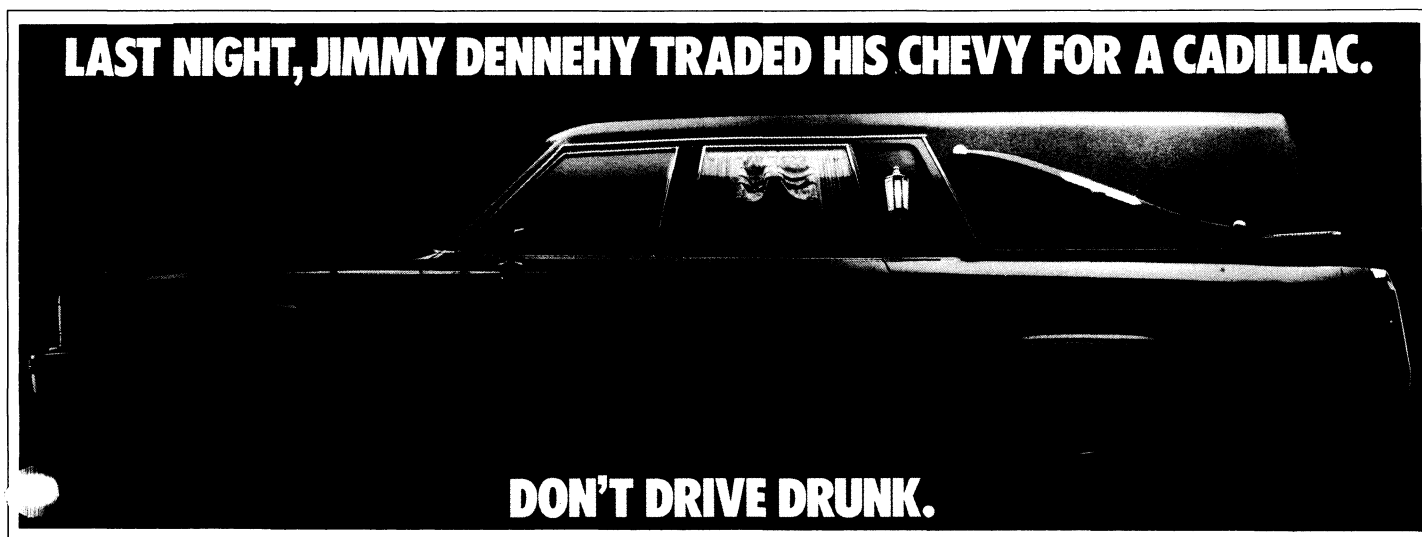


Mini News

News For The Employees of Data General

March 21, 1986



The "Chevy For A Cadillac" billboards will serve as reminders to motorists in Massachusetts on the dangers of driving drunk.

Data General Joins Campaign Against Drunk Driving

This spring, Data General will be co-sponsoring an anti-drunk driving campaign in Massachusetts that will help to raise awareness of the grim result of what can happen when driving while under the influence.

From April 1 through June 30, 100 billboards throughout the state will bear a stark message on driving drunk. They will show a side view of a hearse and carry the caption, "Last night, Jimmy Dennehy traded in his Chevy for a Cadillac. Don't Drive Drunk." Data General is underwriting the cost of printing the billboard posters.

"Our role in this campaign is part of our responsibility as a citizen of the community," explains Jake Frank, Data General's Legal vice president and a member of the Contributions Committee. "Obviously, we are getting an important message out to the public. Drunk driving is a major concern, not only for teens, but for us all, especially in light of the rash of alcohol-related tragedies that have occurred throughout the United States."

The statistics on drunk-driving are staggering. According to the latest data from the National Highway Traffic Safety Administration, of the 57,498 drivers in 1984 who were involved in accidents in which at least one person was killed, more than 30 percent were legally drunk. Of the 25,582 drivers who themselves were killed, half had some alcohol in their blood and at least two-fifths would have been considered drunk.

The cry to stop such senseless deaths has been growing consistently. Mothers of teenagers have formed M.A.D.D. (Mothers Against Driving Drunk) to raise awareness and toughen enforcement of driving-while-intoxicated laws. Students and teachers joined in by forming Students Against Driving Drunk (S.A.D.D) Even bartenders saw the need, forming T.I.P.S. (Training for Intervention Procedures for Servers of Alcohol).

The drunk driving billboard originally was entered in a contest sponsored by Readers' Digest magazine for posters against teenage drunk driving. From more than 1000 entries, the "Chevy For A Cadillac" poster was selected among the 10 best nationally and first-place in New England.

According to Jim Reilly, chairman of Collins, Reilly Advertising, Inc., the Boston advertising firm that

submitted the poster, the artists and writers at the agency wrestled with several ideas going into the contest. "We chose this concept because it is shocking and somber, but not tasteless. Drunk driving is a real serious problem, and this poster can reach teenagers since every kid dreams of trading in his old car for a nice, new, luxury car. The poster has impact."

Jim says that when the agency discovered it had placed high in the contest, it was felt that more had to be done. Many local businesses had pitched in to help produce the original poster, but greater business support would be needed to expand the campaign throughout the state. Collins, Reilly was able to enlist the support of Ackerley Communications, a billboard company, which donated three-months of free use of the 100 boards. But local printers regrettably could not afford to donate that much service. However, one did agree to print the material at cost - about \$12,000.

That's when Data General came forward, offering to supply funds for printing.

While support for the outdoor advertising campaign is Data General's largest contribution to the anti-drunk-driving effort, it is not the first. In December of last year, Data General helped members of the S.A.D.D. chapter at Doherty Memorial High School in Worcester to purchase items, such as key chains, T-shirts and bumper stickers, for use during the chapter's campaign to raise awareness of the dangers of driving drunk. The company also previously donated funds to the South Bay Free Clinic in Manhattan Beach, California, to help the group purchase an automobile for its teen SAFE-Rides program, which offers a ride home during weekends for intoxicated teenagers.

The billboard campaign officially will be launched next Tuesday during a press conference in Boston. Representatives from Data General, Collins, Reilly Advertising, Inc., Ackerley Communications, the Commonwealth of Massachusetts, MADD and SADD will be in attendance.

Ellenberger Named Director, Technical Products Marketing

David Ellenberger has been named director of Technical Products Marketing within the Product Marketing Division. Based in Englewood, Colorado, David reports to Division Director John Scanlon. In this position, he is responsible for product planning and marketing of Data General's 32-bit workstations, scientific systems and factory systems.

David joined Data General's Business Group Planning organization in February 1985 as product line manager of low-end 32-bit systems. Prior to that, he was responsible for workstation product marketing at a pair of start-up companies. He also has managed

product planning and marketing research at AT&T Technologies and Bell Laboratories.

David holds a bachelor's degree in electrical engineering from Iowa State University, a master's degree in electrical engineering from Stanford University and an MBA from the University of Chicago.

Travel Tip

Data General employees using the helicopter MUST be at the helipad at least five minutes before flight time for loading and a safety briefing. Unless delayed by weather, flights will depart precisely on time. Late arrivals may be left behind.

Packages to be delivered to the plants via the helicopter also MUST be delivered to the helipad on time. Check with the helicopter reservationist to be sure the flight you have scheduled is running that day and have available the approximate weight and dimensions of the package.

Reservations for the helicopter service can be made by calling Corporate Travel at extension 232-HELI (232-4354) in Westboro.

People

In Information Systems...

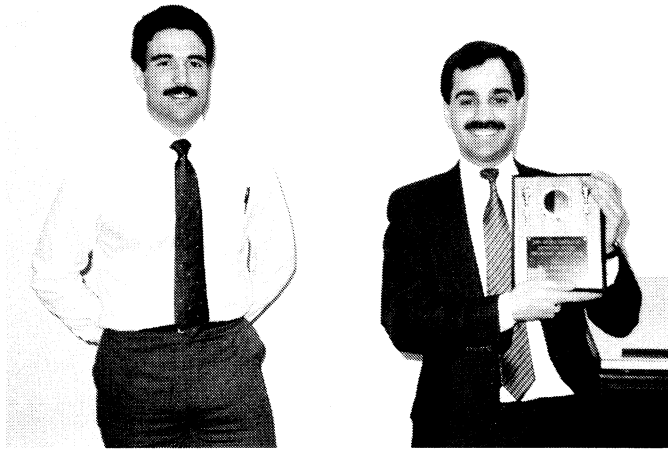
Greg Jarboe has been named manager of Public Relations for the Information Systems Division (ISD), reporting to Bob Johnson, director of ISD Marketing Support. For the past year and a quarter, Greg has been a corporate communications specialist in the Public Affairs department.

Prior to joining the company, Greg was the director of Marketing Communications at Sequoia Systems in Marlboro, the manager of Public Relations for Stratus Computer, and a product publicity specialist at Wang Laboratories.

Greg is a graduate of the University of Michigan, attended the University of Edinburgh in Scotland, and currently is working on his master's degree in applied management from Lesley College.

Mini News is published weekly for the employees of Data General-Westboro. Material may be submitted for publication to Joy Ibrahim, extension 4705, MS A235. Data General - An Equal Opportunity Employer.

Working Together Creates Opportunity



Bill Andrews, Major Accounts manager of Educational Services, accepts a Complementary Marketing Award from Tom Cappelli, manager of System Supplier Development.

Through the company's System Supplier Development organization, groups such as Continuing Products, Educational Services, Field Engineering, Special Systems and Systems Engineering work together to provide programs and services for Data General's value-added resellers (VAR). Representatives from each group meet regularly during a "Complementary Marketing Roundtable" to discuss new ideas and strategies.

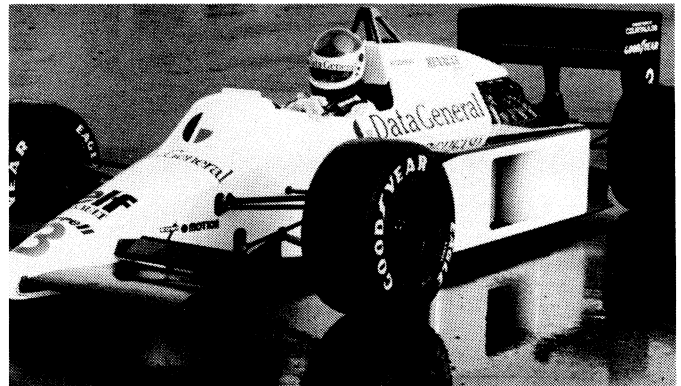
"Complementary Marketing can be defined as the marketing of additional products or services which add to the company's primary product and result in supplemental sales and market differentiation," states Tom Cappelli, manager of System Supplier Development.

VARs are third-party resellers who add on their software and/or hardware products to Data General equipment, offering a "total solution" package to end users. Data General's "complementary" groups offer post-sale support services which help broaden customer support. This increases customer loyalty, creating a new revenue stream for both the VAR and Data General.

Bill Andrews, Major Accounts manager of Educational Services, recently received an award for his outstanding contribution to the success of the Complementary Marketing program. In less than six months, Bill received the support of more than 40 VARs to resell the company's Educational Services products. "Through understanding the needs of VARs, I was able to develop programs which were mutually beneficial to both VARs and Data General," says Andrews. "I owe much of the success to the System Supplier Program which helped promote my programs to Data General Sales representatives and VARs alike."

Data General's System Supplier Program (SSP) keeps VARs informed about the wealth of services and products Data General has to offer in the post sale market. Frequent mailings and feature stories in SSP's newsletter, *Straight Talk*, allow the various complementary marketing organizations to promote their offerings to the company's VARs.

Data General Sponsors Race Car



On race days, drivers Martin Brundle and Philippe Streiff hope Data General's logo will be a blur to other Formula One drivers.

Data General-Europe has become the major sponsor of the Tyrrell Formula One Racing Team and its supplier of computer equipment during its 1986 season.

The Data General Team Tyrrell will participate in 16 Formula One Grand Prix motor races around the world this year, starting with the Brazilian Grand Prix on March 23.

On race days, the Data General Team Tyrrell will use DATA GENERAL / One personal portable computers to monitor the performance of the car during competition, instantly diagnose any faults with the car's operation, and gather statistics (speed, current standing, etc.) for the car's pit crew and driver to refer to during the race.

The team's use of Data General computers does not stop there, however. Throughout the year, the racing organization will use recently-announced Distributed Systems (DS) engineering workstations in the design of racing parts. These systems also will use Data General's CEO comprehensive electronic office software. The computers, at Tyrrell's headquarters in Surrey, England, will be electronically linked to an ECLIPSE MV/20000 computer at Data General's European headquarters in Paris. The computer will analyze the design data compiled by the Tyrrell team.

Martin Brundell and Philippe Streiff will be driving for the Data General Team Tyrrell. Together, Martin and Philippe bring almost 30 years of experience in competitive race car driving.

In 1971, Tyrrell cars were steered by noted driver Jackie Stewart, who finished first in the World Drivers Championship.

The team's only North American appearances will take place later this spring, when it competes in the Montreal Grand Prix June 15 and the Detroit Grand Prix June 22. The rest of the races are in Europe, South America and Australia.

Cable television subscribers can view the Formula One series' first race, the Brazilian Grand Prix, this Sunday on ESPN beginning at 10:50 a.m. ESPN will place a camera in the cockpit of the Data General Team Tyrrell car to give viewers a "driver's perspective" of the race.

Westboro

March Safety Tip

No ifs, ands, or "butts" about it. There is a story behind every fire!

If you must smoke, do not flick the ashes on the floor - put them out. Fires are easy to light but hard to fight. Protect your life and your job by creating a "fuel" shortage.

Safety Slogan Contest

Safety is the business of all employees and the Westboro Safety Committee would like to get everyone involved through a Safety Slogan contest. Your ideas could prevent an accident.

Prizes related to safety will be awarded to seven winners, with the winning slogans to be published in upcoming editions of the *Mini News*.

Enter as often as you wish. Be sure to include your name and phone extension. Send your catchy safety slogan to Occupational Health Nurse Helen Royal at Mail Stop A237 in Westboro. Deadline to submit entries is no later than Wednesday, April 30.

Alarms Tested This Weekend
This Sunday, the fire alarms and sprinkler systems in Buildings 14A and 14B at Data General-Westboro will be tested from 7:30 a.m. to 3:30 p.m.

Direct Deposit For Expense Checks

The Corporate TECS department of Manchester has implemented a feature that provides employees with a convenient, safe and timely way to deposit expense reimbursement checks.

As of March 24, all Westboro, Manchester and field employees can have their TECS expense reimbursement checks directly deposited to their appropriate bank accounts. Once deposited, employees will receive a CEO comprehensive electronic office software message informing them of the deposit, as well as a hard-copy form.

How Do I Sign Up?

All employees currently enrolled in the Payroll Direct Deposit program WILL AUTOMATICALLY participate in the TECS Direct Deposit program. To activate the CEO advice procedure, complete the form below and mail it to:

**Corporate TECS department
Employee Direct Deposit Program
Manchester**

Or, you may send your response through the TECS CEO Hotline -- TECS:Fin7.

If you are not currently enrolled in the Payroll Direct Deposit program, and would like to take advantage of this feature, please complete a Direct Deposit Authorization form. It can be obtained from your local TECS or Payroll departments.

Please note: By enrolling in the TECS Direct Deposit program you also are signing up for Payroll Direct Deposit. This allows your paycheck to be deposited in the same convenient, timely manner.

<p>TECS DIRECT DEPOSIT CEO LOG-ON ID AND HOST NAME DOCUMENT (Please do not send your password)</p> <p>My CEO log-on ID is: _____ (example: Smith T) My CEO host name is: _____ (example: Atlas)</p> <p>Employee Name: _____</p> <p>Badge number: _____</p> <p>Office location: _____</p> <p>Telephone (DID number) (____)-____-____</p> <p>Telephone extension: _____</p>
--



Give Payroll A Hand

In order to help the Westboro Payroll group process pay checks in a timely fashion, please remember the following:

- Time cards are due in the Payroll department by 10:00 a.m. Monday mornings. Cards received after this time will require manual processing and the resulting paycheck will not be available until 3:00 p.m. Friday afternoons.
- All time cards should be signed in ink (no signature stamps) by the individual employee and at least one level of supervisory personnel. The cognizant supervisor may, in the event of the employee's absence, sign on behalf of the employee. In these instances, the supervisor should sign the employee's name followed by the supervisor's initials.
- Any adjustments/corrections made to a time card must bear the initial of the approver. Any policy absences or exceptions to policy must be described on the reverse side of the time card. All policy absences also should be approved by Human Resources.
- Any employee transferring from one division to another is reminded that his/her direct deposit will stop. The employee should submit a new direct deposit form with a voided blank check attached to the payroll department.

Benefits

Company Contributes To Savings And Investment Accounts

Data General has announced that the company contribution to the Savings and Investment program for 1985 is \$149 per eligible employee. This amount will be credited to the company account of each employee in the form of 3.40 shares of Data General stock. (This stock price is based on the average share price for the 20 days prior to the funding date of January 29.)

Eligible employees are those regular employees hired prior to July 4, 1985 who were actively employed on December 31, 1985.

The stock must remain in your company account until you retire or terminate employment with Data General. No taxes are incurred on this contribution while the stock is in your account.

Employees receiving this contribution, who do not actively participate in the Savings and Investment program, will receive a statement reflecting the balance in their company account. Those employees actively participating in the program will see this contribution on their regular quarterly statements.

Employee Investment Information

(As of February 28, 1986)

Savings & Investment Program

Guaranteed Fund (Current Return) 12.1%
Balanced Fund (Share Value) \$13.84
Equity Fund (Share Value) \$11.15*
Loan Interest Rate 13.5%

* The following information is in response to employee inquiries regarding the drop in the net asset value of the Equity Fund during the month of February.

On February 1, 1986, the net asset value of the Equity Fund was \$12.27. On February 10, 1986, the price dropped to \$10.68. This drop was the result of two distributions to shareholders - a capital gains distribution of \$1.77 and a dividend distribution of \$.05. Although these two distributions totaled \$1.82, the price only dropped by \$1.73 due to the impact of a rising market.

On February 28, 1986, the price of the Equity Fund rose to \$11.15. This means that during the month of February 1986, the Fund's price dropped by only \$1.12, which is considerably less than the \$1.82 investors realized in distributions. If a shareholder had invested \$100 at net asset value in the Fund on February 1, it would have grown to \$107.94 at the end of the month.

Fund Experience
For The Period 1/1/85 - 12/31/85
(Time Weighted)

GIC + 12.10%
Balanced Fund + 30.31%
Equity Fund + 28.77%

Activities

Atlantic City - Seats Still Available

Experience the sights and sounds of Atlantic City with your friends and family. Buses will depart for Atlantic City at 5 p.m. from Data General-Westboro on Friday, April 11. Tour includes two nights' accommodations at Harrah's Marina Hotel and Casino, round-trip transportation via motorcoach, baggage handling and taxes, and a bonus of casino quarters. Return to Westboro at approximately 9 p.m. on Sunday, April 13.

Cost for the trip is \$149 per person based on double occupancy. Price includes all taxes and service charges. To reserve space on the trip, send a check for the full payment made payable to Data General Activities Committee to: ATLANTIC CITY, Mail Stop C-128 in Westboro. Be sure to include a self-addressed, stamped envelope.

Batter Up For The 1986 Softball Season

It is time, once again, for the Data General Softball League to start its spring season. The league will consist of 36 teams. Employees interested in playing

softball should sign-up for this year's action according to the following procedures.

To register a team, fill out the form below and submit it to Donna Mattson at Mail Stop D232 in Westboro. Be sure to include a \$25 check, made payable to the Data General Softball League, for a portion of the team fee. (The 1986 season fee is \$250.) After 36 teams have registered, additional teams will be placed on a waiting list. The sign-up deadline is Wednesday, April 2.

<p>Team Name: _____</p> <p>Team Manager: _____</p> <p>Badge #: _____</p> <p>Mail Stop: _____ Extension: _____</p> <p>Assistant Manager: _____</p> <p>Badge #: _____ Ext. _____ M.S. _____</p> <p><i>Return this form with the fee to Donna Mattson at Mail Stop D232 in Westboro. Forms received without payment will be returned.</i></p>
--

Team Rosters Due In April

Softball team rosters are due NO LATER THAN Friday, April 11. The minimum number of players a team may have registered is 15. In a team's list of players, be sure to include:

- Team Name
- Team Managers' Names and Badge Numbers
- Players' Names and Badge Numbers
- Total Number of Male/Female Players
- League Preferred: American or National

Return the team roster and waiver form to Donna Mattson at Mail Stop D232 in Westboro.

Reminder: The 1986 season fee is \$250. The balance of this fee, \$225, is due in full to by Friday, April 18, 1986. Mail to Joe Sullivan at Mail Stop D216 in Westboro.

Spring Dasher Races Set For May 9

Get ready...set...go...Data General's spring Dasher Road Races will take place on Friday, May 9.

The traditional format has been planned: three-mile and 10-kilometer foot races; a 15.5-mile bicycle race; and a biathlon, combining the 15.5-mile bicycle race and the three-mile foot race. Bike race participants are required to wear helmets.

Watch for registration details in upcoming issues of the *Mini News*.

Volunteer help is needed. Employees are needed for planning and race day positions. If you would like to help out, contact the Road Race Committee at Mail Stop E111 in Westboro.

The Dasher Road Races are sponsored by the Data General Activities Committee solely for Data General employees.

Data General Wallyball League 1985 - 1986 Season Standings Week Ending 3/14

Competitive Division

Team #	Team	Won	Lost	Tied	Match Pts
1	Moura	53	3	1	107
3	Insecurity	48	10	2	98
2	Invaders	37	16	4	78
4	Ramball	37	18	2	76
7	Cadgers	30	31	2	62
5	Over the Hill Gang	23	36	1	47
6	The Bud Men	12	44	1	25
25	Murphy's Law	12	48	0	24
32	Leftovers	5	51	1	11

Division A - Recreational

Team #	Team	Won	Lost	Tied	Match Pts
30	Team X	36	17	1	73
20	ACK	35	18	1	71
19	Hacs	32	20	2	66
18	Mad Mux	25	29	0	50
22	Baker's Dozen	20	33	1	41
28	MSE	11	42	1	23

Division B - Recreational

Team #	Team	Won	Lost	Tied	Match Pts
17	Karnaugh Knowledge	47	10	0	94
16	Wallbangers	45	11	1	91
27	Harvey's	26	31	0	52
10	WCIF	23	33	1	47
26	Commfusion	21	35	1	43
31	Mousketeers	19	37	1	39
9	Mad Dogs	17	41	2	36

Division C - Recreational

Team #	Team	Won	Lost	Tied	Match Pts
8	Lynch Mob	44	11	2	90
11	Flexible Flyers	43	13	1	87
15	Data Who?	37	18	2	76
12	Materials	30	23	4	64
14	DS & C	26	28	3	55
29	Off The Wall	21	34	2	44
13	Misfits	13	43	1	27
24	C.B.U.W.	6	50	1	13

MARKETPLACE

CARPOOL

Ride Needed , From DG Webo to Marlboro Jr. High, afternoons only, every other week, after x6726.

Ride Needed , from Worcester to DG Webo, 7-3, flex, will pay, Lawrence x6747.

Carpool , Existing carpool needs rider, Brookline/Brighton/Allston/Newton to Webo/Sobo, flex, Katz x7093.

LOST & FOUND

Found , men's med tan leather gloves, assorted earrings & bracelets, umbrellas, may be claimed at site Security, MS C111 x6100.

FREE

Cocker Spaniel , 8 mos old, good home needed, black, house broken, very good w/children, 478-0560 (Milford).

Puppies , 1/2 labrador retriever, 1/2 german shepard, 6 wks old, 473-7132 (Milford).

FOR RENT

House , 3 bdrm ranch, near Seagull beach, West Yarmouth, \$600/wk, 529-3434 (Upton).

Dennisport Condominium , 2 bdrm, near beach & shops, avail May-Oct, \$350/wk, off season, \$200/wk or \$50/wkend, 435-4557 (Hopkinton).

Studio Apartment , \$85/wk, includes everything, 366-4506 (Westboro).

House , 4 bdrm, 1 1/2 bath, frpl, appl, North Uxbridge, 25 min to Webo, \$850/mo, 78-7861 (Wayland).

House , Dennisport, 2 bdrm, near beaches, \$375/wk, 359-6852 (Medfield).

Apartment , 1 bdrm, appl, no pets, \$485/mo + util, avail April 1st, 366-8061 (Westboro).

Cottage , Pocasset, frpl lvng rm, 4 bdrm, screen porch, washer, dishwasher, near beaches, \$600/week, 429-6077 (Holliston).

Apartment , Brighton, 1st flr in 2 fam house, 3 bdrm, lvng rm, dining rm, porch, \$850/mo, 359-7613 (Medfield).

Townhouse , 2 bdrm, 1 1/2 baths, 2 story bldg, wash/dry hookups, 20 min to DG Webo, \$750/mo, 533-2985 (Franklin).

House , large bdrms, 1 1/2 baths, frpl, dshwshr, priv inground pool, 25 min to DG Webo, 15 min to DG Milford, avail May 15, \$850/mo, 358-7861 (Wayland).

Duplex , Northboro, 3 bdrm, 1 1/2 baths, dining rm, deck, \$850/mo + util, 875-2330 (Framingham).

White Mountain Chalet , new, 3 bdrm, 2 baths, furnished, \$275/wk, \$150/wkend, 528-2028 (Franklin).

New Hampshire Chalet , Lake Ossipee Village, NH, 3 bdrm, 2 baths, enclosed deck, priv beach, \$275/wk, 696-6065 (Milton).

Chalet , Falmouth, on waterfront, wrap around deck, dshwshr, 3 bdrm, slps 6, July/August, \$600/wk, 998-5485 (New Bedford).

Vacation Home , West Dennis, 2 bdrm, slps 4, near beaches, wash/dry/dishwash, avail 6/28-7/5, 8/9-8/30, \$575/wk, June & Sept, \$400/wk, 839-9250 (Grafton).

House , Yarmouthport, 3 bdrm ranch, central location, avail May 1 thru Oct 1, weekly, bi-weekly, monthly, 852-1632 (Worcester).

Apartment , 1 bdrm, frpl, modern kitch, deck, \$850/mo, avail 5/1, 236-1622 (Boston).

WANTED

Drummer , needed to complete 4 piece band, orig music, 366-9430 (Westboro).

Neil Diamond Tickets , 2, Centrum 4/18 or 4/19, 393-2231 (Northboro).

Roommate , to share 3 bdrm house, 25 min to Webo, near Boston, \$220/mo incl heat, 893-1008 (Waltham).

Roommate , 3 bdrm, lake house, \$375/mo + util, 431-9216 (Hopkinton).

Roommate , to share house, 10 min to Webo, 799-6909 (Bolton).

Land , 1/2 acre or more to build a single family house, Worcester area, 792-9063 (Worcester).

Sailboat , O'Day day sailer, Flying Scott, 478-4555 (Milford).

Roommate , to share 4 bdrm house, 20 min to Webo, \$240/mo incl util, 528-3948/376-2110 (Franklin/Millis).

Roommate , to share 2 bdrm apt, frpl, hardwood flrs, \$275 + 1/2 util, 879-2085 (Framingham).

Siamese Kitten , wanted, 12-18 wks old, after 3/20, 234-3521 (Whitinsville).

Roommate , to share 3 bdrm duplex, wash/dry, garage, full appl, \$270 + 1/3 util, 393-2233 (Northboro).

FOR SALE

Cobra Cam 89 CB Base Radio , 23 channel, 2 way, w/TV filter-antenna and approx 100' coax cable, \$85, 481-7343 (Marlboro).

Cordless Remote Phone , BO, 842-2510 (Shrewsbury).

Fender Telecaster , maple, customized, w/case, \$500, 842-0514 (Shrewsbury).

House , 3 bdrm ranch, frpl, living rm, finished basement, \$164,900, 264-0225 (Acton).

Riding Apparel , coat, sz 10, \$20; breeches, sm, \$15; 3 helmets, 2 blk, 1 brn, sz 7 1/8, \$8/ea; 2 prs boots, \$8/ea; coat, sz 12, \$50; shirt, sz 32, \$18; bridle, sm, \$35, 435-3064 (Hopkinton).

House , split entry, frpl, family rm, kitch, 2 car garage, \$219,000, 877-6310 (Framingham).

Items , Apple II, 5 megabytes, \$600; Sony component rack, \$50; Macintosh development software, \$75, 562-2498 (Hudson).

Folk Guitar , Harmony, 6 string, BO; snow tires, 15" & 14", inflatable spare, BO; Camera equipment, Vivitar lenses, \$50 & \$75; radiators, w/covers, BO, 792-9063 (Worcester).

Sony Beta Video Recorder , \$125/BO, 839-9396 (Grafton).

House , 7 rms, 1 1/2 baths, 3 bdrm, large lot, great starter, \$110,000, 473-5548 (Milford).

Tune Up Parts , for 1980 VW Rabbit, 478-0464 (Milford).

Items , Full size metal frame and box spring, like new, \$100; couch, \$75; table lamp, \$10; 576-6439 (Cambridge).

Sailboat , Tanzer 14' sloop, Ricoh sails, trailer, cover, all rigging, blocks, ground tackle, 457-4555 (Milford).

House , 3 bdrm Colonial, dining rm, fenced yard, barbeque, \$109,900/BO, 529-3434 (Upton).

Home Fitness Machine , DP Gympac 1000, over 50 exercises, fully assembled, \$150/BO, 492-8159 (Cambridge).

Items , B&H model 1552 16mm sound projector; radio ctrl tug boat & airplanes, 234-8026 (Northbridge).

Items , Deltalab ADM 2048 prog digital delay, w/foot pedal, \$500; Fender Bassman 50 amp, \$200, 879-2085 (Framingham).

Firewood , cut, split, delivered, \$95/cord, 842-7844 (Shrewsbury).

Riding Mower , 7 HP Ariens, w/dual grass catcher, 30" cut, \$700, 429-1063 (Holliston).

Golden Retriever , 1 yr old, male, AKC papers, trained, medical records up-to-date, friendly, 935-0958 (Woburn).

Items , Wooden Cubes, 4 diff sizes, \$5 to \$20/ea, \$40/all 4; twin futon w/black cotton cover, \$100; 2 beechwood Windsor chairs, 1 armchair, \$35; 1 side chair, \$25, 653-5541 (Natick).

Vectrex Video Arcade System , w/built-in screen, no TV required, light pen, extra game controller, 20 cartridges, \$150/BO, 435-5339 (Hopkinton).

Easter Bunnies , Minilops, Californians, Rex & others, 839-9840 (Grafton).

Tickets , 2, Apr 11, A CHORUS LINE, Worcester Mechanics Hall, \$16, 234-5128 (Whitinsville).

Townhouse , 2 bdrm, cathedral ceilings, skylights, loft in bdrm, 1 1/2 baths, wash/dry hookup, central air, 537-0538 (Leominster).

Items , Delco factory AM/FM/cassette, \$200; men's 27" Fugi 10 spd bike, \$100, 756-0188 (Worcester).

House , 3 bdrm, 2 1/2 bath, 1.3 acres in exec neighborhood, 2 frpl, 2 car garage, hardwood flrs, \$275,000, 655-7365 (Sherborn).

Bicycles , mens 26", 3 spd, w/large basket, \$25/BO; ladies 24", 3 spd, \$25, 478-4555 (Milford).

AUTOS

'73 8 1/2' Camper , slps 6, self-contained, \$1300, 365-5668 (Clinton).
 '74 Dodge Dart Swinger , 6 cyl, 225 CID, good eng & trans, will sell for parts or as is, BO, 234-6769 (Northbridge).
 '76 Volkswagon Rabbit , \$700/BO, 842-7844 (Shrewsbury).
 '77 Ford LTD II , 8 cyl, many new parts, \$500/BO, (401) 765-4744 (Woonsocket, RI).
 '78 Buick Opel , 5 spd, \$500, 234-7273 (Whitinsville).
 '78 Ford Granada ESS , 2 dr sport coupe, 8 cyl auto, PS/PB, AC, AM/FM, no rust, \$1500/BO, 534-9394 (Leominster).
 '79 Datsun 280ZX , 5 spd, AC, loaded, \$4400, 865-1576 (Sutton).
 '79 Dodge 1/2 Ton Pickup , 6' stepside bed w/cap, auto, 6 cyl, AM/FM, \$2800/BO, 278-3202 (Uxbridge).
 '80 Mercury Cougar XR7 , loaded, Chapman lock, \$3800, 791-1283 (Worcester).
 '80 Thunderbird , V8 302 eng, AC, PS/PB, tilt wheel, AM/FM, 6 speakers w/pwr booster, rear defrost, 69K mi, \$3500, 478-2668 (Milford).
 '80 Plymouth Horizon , red, 2 dr hatch, auto, bucket seats, 60K mi, new tires, \$1750, 227-7131 (Boston).
 '81 Chevrolet Citation , 4 dr hatch, V6, PS/PB, AC, 77K mi, \$2300, 366-1175 (Westboro).

'81 Camero , PS/PB, V6, 58K mi, \$4500, 839-9387 (Grafton).
 '81 Pontiac Grand Prix , V6, PS/PB, AC, AM/FM, \$5000/BO, 528-1913 (Franklin).
 '81 Chevette , auto, AM/FM, 2 dr, hatch, rear defrost, new battery, muffler, carb, fuel pump, tires, \$2325, 653-5541 (Natick).
 '81 Toyota Corolla , 2 dr sedan, silver, 59K mi, \$3300, 877-9903 (Framingham).
 '81 Pontiac Phoenix , 4 cyl, std, AC, high mi, \$1995, 263-7542 (Acton).
 '82 Jeep Renegade CJ5 , \$5500/BO, 839-4345 (Grafton).
 '82 Honda Accord LX , 2 dr, hatch, 5 spd, PS/PB, AC, AM/FM/cassette, \$4800, 435-6521 (Hopkinton).
 '82 Chevette , 4 spd, AM/FM/cassette, rear defrost, 40K mi, \$3500/BO, 865-4478 (Millbury).
 '82 Honda Prelude , 34K mi, elec snrf, AM/FM/cassette, silver w/red interior, \$6500, 327-1490 (West Roxbury).
 '83 Honda Nighthawk , 550cc, 47K mi, \$1200/BO, 473-8834 (Milford).
 '84 Toyota SR5 4x4 , loaded, oversized tires, roll bar, brush guard, 29K mi, \$8999, 839-4031 (Grafton).
 '85 Chevrolet Scottsdale Pickup , 3/4 w/ 4x4, 18K mi, loaded, \$9500, 376-4156 (Millis).
 '85 Mitsubishi Colt , 4 spd, 20K mi, AM/FM/cassette, \$5195/BO, 537-5503 (Leominster).

'85 Pontiac Firebird , 5 spd, spoiler, rear dfrst, AM/FM, 10K mi, \$9000/BO, 366-8426 (Westboro).
 '85 Cavalier Type-10 , 2 dr, 4 cyl, auto, AM/FM, AC, low mi, \$8000/BO, 478-4523 (Milford).
 '85 Toyota 1/2 Ton Pickup Truck , short bed, 4 spd, AM/FM/cassette, Northlander cap, 6K mi, \$6000, 473-8444/473-5896 (Hopedale).
 '85 Ford F150 Pickup , red, 6 cyl, 10K mi, AM/FM/cassette, 3 spd, \$7000/BO, 842-1742 (Shrewsbury).

Hours

Westboro Cafeteria , full breakfast, 6:30 a.m. - 8:30 a.m.; lunch, 11:30 a.m. - 1:30 p.m.; open from 6:30 a.m. - 3:00 p.m. for beverages.
Pizzeria , serving from 10:00 a.m. - 2:00 p.m.
Pumpnickel's Deli , Coffee & pastries, 6:30 a.m. - 7:30 p.m.; full breakfast, 6:30 a.m. - 10 a.m.; deli lunch, 11 a.m. - 2 p.m.; Take-out, 3 p.m. - 6:30 p.m.; dinner, 5 p.m. - 7:30 p.m.
Milford , full breakfast, 6:30 a.m. - 8:30 a.m.; lunch, 11:15 a.m. - 1:15 p.m.; supper, 5:30 p.m. - 7:30 p.m.; open from 6:30 a.m. - 3:15 p.m. for beverages.
Southboro , full breakfast, 6:30 - 10:00; lunch, 11:15 - 1:00; open from 6:30 - 3:00 for beverages.

Advertise In The *Mini News*

Name: _____ Ext. _____
 Home Phone: _____ Town: _____
 Classified Ad: _____

 Ride/Carpool: To: _____ From: _____
 Working Hours: _____ Flexible: YES NO

Classified ads are accepted from Data General employees only for the sale or rental of personally owned goods or property. Ads for any business or profit-making service are not accepted. **Mini News** reserves the right to reject an ad or to edit for space limitations. All ads must be submitted in writing and include employees's name, home phone and extension number. Limit ads to five descript words. Send ads to **Laureen Sasseville, MS A235. or CEO SASSEVILLE L:MSIS03**