

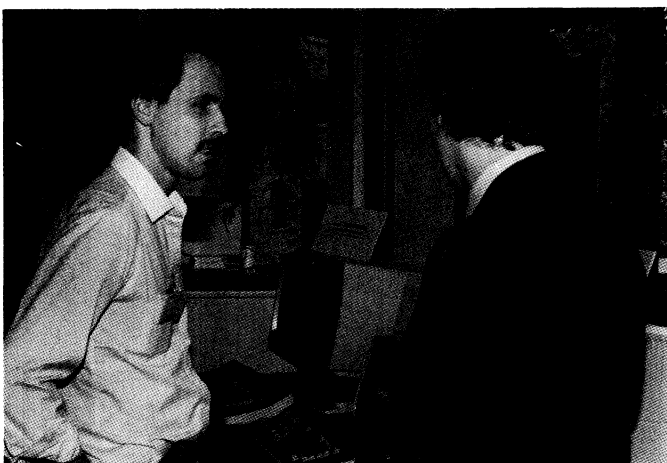
# Mini News

## News For The Employees of Data General

---

October 14, 1983

### Field Divisions Kick Off Fiscal 1984



*McLean Technical Services Manager Mark Fraase (right) gets some information on Data General's GW/4000 Expert Workstation during the North American Sales Division Management Kick-Off Meeting.*

Field managers took some time this past week to take a brief look at the past and a long look at the future.

More than 200 area, regional and branch managers from Sales, Systems Engineering, Field Engineering and Personnel offices from throughout North America converged on Woodstock, Connecticut for the Fiscal 1984 North American Sales Division's Management Kick-Off Meeting.

Throughout the week-long event, the managers attended a series of meetings and workshops that provided them with the information they will need to help Data General continue to operate successfully in 1984 and beyond.

North American Sales Division Vice President Frank Keaney opened the meeting by welcoming the participants to Data General's Woodstock Education Center and urged them to continue their fine performances. "We are beginning what will be the most successful sales year in Data General history," said Frank. "We have the timing, we have the products and we have you: the people with the will to win."

Business Group Senior Vice President Bob Miller then told the managers that they had done an excellent job in 1983 under sluggish economic conditions and looked forward to their continued outstanding performance throughout the 1980s.

The Field managers also heard presentations from Data General officers and directors on business conditions within the Business Group, Manufacturing, Administration, Finance and the Americas/Far East organizations.

### Jaross Named Director

*Richard Jaross* has joined Data General as director of Customer Educational Services, reporting to Customer Services Division Vice President Michael Schneider.

As director of Customer Educational Services, Rich is responsible for Business Planning, Course Development and Media Products, North American Education Center Operations, Marketing and Sales.

Prior to joining Data General, Rich was with Digital Equipment where he held a number of senior management positions in its Customer and Employee Training Division. Previous experience includes managing the General Management and Data Processing Divisions of AMR International Inc. Rich's academic experiences include serving as a dean at Cornell University and faculty positions at New York University and Michigan State.

Rich holds a bachelor's degree from the State University of New York and a master's degree from New York University.

### Information Management System Added To ISV Program

The application software package DNA-4, from Exact Systems and Programming Corporation (ESP), of Armonk, NY, is now available for use on ECLIPSE®, microECLIPSE and DESKTOP GENERATION systems

under Data General's third party Independent Software Vendor (ISV) program.

DNA-4 is a fourth generation Information Management Control system. It includes a full-feature Data Base Manager (DNA) capable of supporting relational, network, hierarchical and associative data models, an applications-development facility, and a set of utilities. Under an ISV agreement ESP will sell and support DNA-4.

DNA-4 operates under the Real-Time Disc Operating System (RDOS), the Advanced Operating System (AOS) and AOS/Virtual Storage. It is priced from under \$2,000 for the DESKTOP GENERATION systems, to \$63,000 for use on the 32-bit ECLIPSE MV/10000® system.

## Westboro

### People

**Mary Sanning** has been promoted to business systems analyst in Corporate Order Administration responsible for coordinating the area's involvement in direct sales as well as developing and implementing effective business controls, self audit programs and system support strategies.

Mary has a BA from Cortland State College. She reports to Ed Simisky, manager of Order Administration Audit and Controls.

**Peter Sherman** has joined Customer Educational Services as special projects administrator reporting to Course Development and Media Products Manager Chris Gundel. He is responsible for the coordination of user training for the FLIPS contract.

### Stamp Of Approval



For employees' convenience a stamp machine is located in the Building 14A Cafeteria. In addition to stamps available in \$1.20 and \$2 packages, employees may purchase pre-stamped business envelopes and business post cards as well as air mail and 13-cent stamps. The machine is operated by the U.S. Postal Service and material is provided at cost.

Pete has been at Data General for six years, most recently in Technical Support for Technical Products Marketing. He also has been an instructor and supervisor in Customer Educational Services.

Pete holds a computer science degree from Union College and is currently working on an MS in management at Worcester Polytechnic Institute.

**Don Barbarits** joins Mass Storage Engineering as a senior engineer helping to develop peripheral storage devices. He reports to Section Manager Lou Lemone.

Prior to coming to Data General, Don was employed by Amperif Corporation; Geophysical Systems Corporation and Control Data Corporation.

Don has a BS in electrical engineering from the State University of New York at Buffalo and an MBA from Claremont Graduate School in California.

### Reminder

• **Copy Key Readings Due** Auditron copy key readings are due in the Westboro Copy Center on Monday, October 17 and Tuesday, October 18. Call extension 6141 or extension 6073 with your readings.

## Southboro

### Innovation At Work

The combined effort of Southboro's Metal Fabrication employees and Milford Quality Engineer Bob Caggiano shows how Data General ingenuity can result in cost savings and improved quality.

As an employee in Quality Assurance Engineering in Milford, Bob realized the department needed an elevated temperature oven for testing returned parts from the field.

Originally, Bob had designed a small thermal unit for testing central processing units (CPUs). He says, "I knew it would take a special kind of expertise to build the unit we needed." When Bob approached Metal Fabrication in Southboro, he was offered a large capacity bench oven which had been used by PCB (Printed Circuit Board) Fabrication. Says Bob, "PCB Managers Al Young and Kurt Peterson suggested that we 'recycle' this unit." From that point, Bob began to work closely with Metal Fabrication employees on modifying the oven to his specifications.

"We needed this unit to perform a variety of functions and working with Joe Martin, a model maker in Metal Fabrication, we were able to determine

what changes could be made to make the oven serviceable for our department," says Bob.

Joe added windows and access ports to allow technicians to move parts as they are tested without opening the main chambers. Joe states, "This kind of project is challenging, there is a lot of work involved." Joe cut and welded the areas that were redesigned. He was assisted by co-workers. "This was a unique project and when it was completed we all had a sense of accomplishment."

Bob observes that one of the changes in the unit which makes it extremely effective was the addition of a control box. Utilized in cycle testing, this box allows technicians to control how cool or hot the main chamber gets while actually testing parts. Bob relates, "This is called dynamic testing and the oven offers very precise control of 1, 2, or 3 degrees per minute."

Bob comments that this unit already has been used for testing component quality. He adds, "Working together with Southboro has been a rewarding experience. I appreciated the assistance I received from the employees in Metal Fabrication. Refurbishing this oven was cost effective and by working with Southboro we were able to get exactly what we needed for the department."



*The refurbished bench oven that Southboro Metal Fabrication employees modified for the Quality Assurance Engineering department in Milford is now operational. Pictured here as they discuss the advantages of the new unit are (left to right): Arthur Scott, supervisor of Metal Fabrication, with Joe Martin and Bob Caggiano.*

## Joint Effort In PRIDE

The Photo Lab and Pressroom PRIDE Circles have combined talents to increase quality and productivity within Building 5's Reproduction Distribution Services (RDS) area.

As part of Data General's in-house printing service, these areas are responsible for the production of manuals, brochures, forms and numerous other

printed materials. By using the standard PRIDE Circle techniques, the groups formed one Circle and researched several issues affecting operation in these areas. It presented its resolutions to RDS supervisors and managers and the Southboro PRIDE Circle Steering Committee.

Facilitator Joe Crisefulli explains that the detailed nature of the presentation and this Circle's determination to enhance the workflow and quality of materials produced in its areas shows how involved employees become in their work environment through the program. "Every fundamental PRIDE technique and PRIDE goal was used by the Circle while it was developing the presentation," says Joe.



*Photo Lab and Pressroom PRIDE Circle members who recently gave a presentation to the Southboro PRIDE Circle Steering Committee are (seated, from left): Circle Leader Karen Crandell, Sue Nowlan, Josephine Cabral and Karen Callahan and standing (from left): Scot Lamothe, Jim Dalterio, Paul Del Signore, Harvey Levinsky, Rich Bernier and Brendan Flaherty. Missing is Candi McCall.*

## Forms

The first part of the presentation pertained to missing or incorrect information on job tickets, which provide instructions on incoming printing jobs. This issue is complex and affects production in a number of ways, including rework time, defective printing materials and production delays. The Circle's research has contributed to the development of new forms used during production. One form, called Temporary Change Notice (TCN), reflects changes for reprint jobs. A Process Change Inquiry (PCI) form also has been devised. This form allows Graphics employees to recommend changes in the printing process and is a convenient way to provide feedback to Graphics Engineering from production.

## Terminology

Incorrect use of graphics terminology was another area the Circle was concerned with. To help employees communicate clearly about various processes written on job tickets, the Circle proposed that all Graphics employees become familiar with and use the same terms to describe production processes.

"Incorrect use of terms can result in confusion and error on the job and the Circle recommends all Graphics' employees be provided with a *Pocket Pal* because this book is the industry standard for graphic terms," states Circle member Candi McCall.

The Circle also developed a series of checklists to insure that all requirements are completed as specific printing jobs are routed through the Photo Lab and Pressroom. Additionally, the Circle suggested that Graphics' employees take a more active role in developing their knowledge of production methods by using the department's reference library.

### **Plating**

The second part of the presentation was related to the Photo Lab's plating process, a procedure by which typeset material is transposed onto metal plates for printing presses. Circle members carefully examined each step from original art through 'burning in' the actual plate. Environmental issues, such as dust and humidity, were investigated and the Circle determined that by instituting an internal maintenance program it could produce higher quality plates. Already this group has devised chemical usage and storage charts to insure all employees understand the proper methods of handling materials used during the plating process.

The Circle also examined ways to adequately transport the delicate plates from the Photo Lab to the Pressroom. Recently new plate carts were purchased which assures the safety of finished plates as they are moved between areas.

### **Communications**

Increasing communication between first and second shift employees is another goal the Circle set. Along with that, members believe further in-house and vendor training would enhance employee job performance. Circle member Sue Nowlan explains, "If Photo Lab and Pressroom employees could participate in a training program and learn about each others' job functions, communications between the two areas would be improved."

According to Wayne Eaton, manager of the Graphics Reproduction area, this presentation helped employees communicate better with co-workers. "As the program matures employees have become more open about what they need to remain effective on the job. It is important for supervisors and managers to keep in touch with Circle activities," says Wayne. "The group has been instrumental in getting a copy of *Pocket Pal* purchased for each employee, devising the operator checklists and helping to get a conference room and library included in a new floor plan for the area."

After the Circle made its presentation, Wayne provided feedback from RDS managers. This kind of direct response gives everyone an opportunity to

review the topics presented and how they will be handled in the future.

Joe stresses that the success of this presentation was illustrated when it was brought before the Southboro PRIDE Circle Steering Committee. Circle Leader Karen Crandell notes, "It was a good experience to give our presentation to the committee. We all worked hard and examined many aspects of the Photo Lab and Pressroom activities. The committee was very responsive to our ideas and we appreciate the support we have gotten from the managers in RDS."

PRIDE Circle Leader Training has been scheduled for November 7 - 10. The course will be held in the new Building 4 Training area. During the four-day seminar employees will learn the techniques necessary to become a PRIDE Circle leader. To sign up, call Facilitator Joe Crisefulli at: extension 7994 in Southboro.

## **Dot Hagerman Has A Heart**



*Dot Hagerman*

From computer donations to Red Cross blood drives, Data General serves the community, touching a broad range of people and organizations.

There is another significant contribution the company has made which effected just one family in a very meaningful way. Through the CPR (Cardio Pulmonary Resuscitation) and Emergency Cardiac Care course offered by the Southboro Medical department, Dot Hagerman of Low Volume earned her certification as a Basic Rescuer. Just 24 hours after completing the course her alert response to a medical emergency proved instrumental in averting a further medical crisis.

The day Dot was certified she traveled to Hyannis for a VFW convention, with her husband, Leonard. Also attending were a number of the Hagerman's friends including Alice and Lionel Beauregard whose

room was next to the Hagerman's. Lionel has a history of heart trouble and shortly after midnight Dot heard Alice call for help. When she responded to the call, it was obvious that Lionel needed medical attention. Following the basic procedures and applying the proper techniques of emergency rescue, Dot maintained a support system for Lionel until the ambulance arrived. Fortunately, a true cardiac arrest did not occur so Dot did not actually perform CPR. It was because of Dot's ability to respond to the situation that Lionel did not experience further complications. Dot explains that the skills she developed through the course were extremely important. She states, "I never thought that one day an emergency situation would occur and the techniques learned in class would be put to a real test."

Registered Nurse Theresa Reale, Medical department supervisor, is pleased that Dot was able to use her new skills. She says that employees sign up for CPR classes for a number of reasons, some have family members with a history of heart trouble, others just feel CPR is a valuable skill to have. "Dot was genuinely interested in being capable of saving another person's life. Because of what she did many other employees can now better relate to how important this skill is."

### **Nettie Trakimas Retires**



*Nettie Trakimas has retired after more than 13 years of service at Data General. Most recently, she was an inspector in the Printed Circuit Board (PCB) department. She is pictured (center) with her supervisor Ron Demboski (right) and Dennis Sullivan as they discuss Nettie's future plans.*

## **Milford**

### **People**

**Joan Berry** has joined Field Engineering Technical Publications as an associate technical editor. Joan will support the Small Systems Writing group.

Joan has been with Data General since February 1982 and has worked both in Milford and, most recently, in Westboro, as a credit analyst. Prior to joining the company, she was employed at Household Finance Corporation; the 80's Network and the National Association of Government Employees.

Joan has a bachelor's degree from the University of Rhode Island.

## **Field**

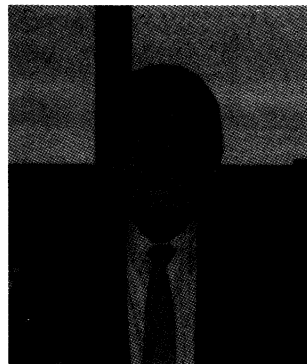
### **People**

#### ***Regional Field Engineering Manager Appointed***

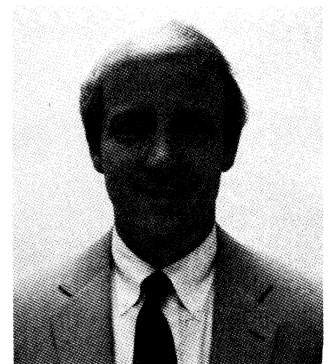
**Ron Gilmore** has joined Data General as a regional Field Engineering manager in Region 1 of Area 2, located in Norcross, Georgia. Ron is responsible for Field Engineering activities in the Southeastern United States.

Prior to joining the company, Ron was director of Network Operations at ISA Communications Services, Inc. in Atlanta. He also spent 15 years with United Airlines in the Field Engineering organization.

Ron has a bachelor's degree in electrical engineering from the University of Pittsburgh.



*Ron Gilmore*



*Charles Boesenberg*

#### ***Area 2 Sales Manager Named***

**Charles Boesenberg** has been named Area 2 Sales manager reporting to Frank Keaney, vice president of North American Sales.

Based at Norcross, Georgia, Chuck is responsible for all Area 2 Sales and Systems Engineering activity.

Chuck comes to Data General after nearly 10 years' experience with IBM's Data Processing, General Systems and National Marketing divisions, including positions as a sales representative, marketing manager and branch manager. He was most recently Financial Marketing manager in the National Marketing Division at Atlanta.

Chuck has a BS in mechanical engineering from Rose Hulman Institute of Technology in Indiana and an MBA from Boston University.

## Benefits

### **Update Your Address**

All employees are reminded to notify their supervisors *immediately* if they have a change of address. Upon notification, supervisors should update the Employee Profile Document (EPD) and have it processed.

You can determine the address currently on file for you by looking at your next paycheck. If the address listed is no longer correct, give your supervisor your address change and request that it be processed right away.

During the next few months, information concerning Stock Purchase, the Savings & Investment Program, benefits statement, your W-2 form and other important items will be mailed directly to your home. If your address is out of date, you may not receive these items in a timely manner -- or they may not reach you at all!

Important benefits information and W-2 forms are mailed to the last known address of a terminated employee. Employees leaving the company should make sure Personnel or Corporate Benefits is notified of any change in your address.

## Activities

### **Join Us For The Holidays**

Celebrate an authentic 19th century holiday at Sturbridge Village. Enjoy old time hospitality mixed with superb food and drink. Entertainment will be provided by Richard Potter, a 19th century magician. The choice of dates is yours -- select either December 2 or December 16. Ticket price is \$18 per person. To secure reservations call Peter Faford (x6776); George Lawton (x4859) or Bev Gregory (x4865) in Westboro.

### **Holiday Shopping In New York; Take In A Show While You're There**

A trip to the 'Big Apple' is scheduled for Saturday, December 10. The price is \$37 per person and

includes: a day of shopping in the City; a reserve seat for an evening performance at Radio City Music Hall; and roundtrip motorcoach transportation. Reservation will not be held without full payment. Send reservation to: BIG APPLE: MS D127 in Westboro.

### **Ski Alert ...**

#### **Ski Lessons Begin In January**

Sign up for ski lessons at Mt. Wachusett in Princeton is underway. Lessons will begin the week of January 2. Sessions, which include a one-hour lesson, is \$40 per person and will meet one evening a week for six consecutive weeks. In addition to optional insurance, a \$10 charge may be added for equipment rental. For further information write: LESSONS, C223 in Westboro by November 1. If full payment is received by November 1 a further \$2 savings will be applied. Make sure to include your name, home address, age and a check payable to the Data General Ski Club with all reservations.

#### **Lake Tahoe Skiers!**

Date: February 3 - February 9. Price per person: \$645/quad; \$660/triple; \$675/double. Send \$100 deposit to Debbie Hixson, MS C223 in Westboro before October 28.

#### **Ski Mt. Killington**

Date: December 9 - December 11. Price per person: \$65/quad; \$73/triple; \$85/double. Send \$25 deposit to John Watkins, MS 4-41 in Southboro or Debbie Hixson, MS C223 in Westboro.

#### **Ski Stowe**

Date: January 6 - January 8. Price per person: \$112/quad; \$119/triple; \$133/double. Send \$40 deposit per person by November 11 to Debbie Hixson, MS C223 in Westboro.

#### **Sugarloaf Excursion Full Up!**

Names are now being accepted for a waiting list for the Sugarloaf ski trip. If you would like to have your name included write: SUGARLOAF, attention Glenn Kaplus, MS 6-1 in Southboro. No calls please.

#### **New Ski Events Added**

The Data General Ski Club has made arrangements to ski Lake Placid over Washington's Birthday (2/17-2/20) and scheduled another ski weekend to Sugarbush on March 23 through March 25. For further information write to Glenn Kaplus, MS 6-1 in Southboro. No calls please.

#### **Chess Club Simultaneous**

The Data General Chess Club starts its fall evening season on Thursday, November 3 in the Pizzeria with a chess simultaneous. The club's current champion, Stuart Schulman, will challenge the first 20 guests each to a game of chess and play all the games simultaneously. Opponents will be seated in a circle making one move as Stu reaches their board.

If you are interested in playing, send your name, mail stop, location and extension to: CHESS SIMULTANEOUS, Att. Charlie Bures, MS C137 in Westboro.



## CARPOOL

**To Join or start**, from Salem/Beverly area to Webo, 8:30-5, call Linda x4575.

**Rider Needed**, existing carpool needs add. rider from Brighton, Brookline, Chestnut Hill area to Webo/Sobo, call Katz x7093.

## MARKETPLACE

### Free

**Kittens**, 2 females, 1 grey/calico, 1 tiger, 393-6581 (Northboro).

**Puppies**, mongrels, blk. w/wh. spots, grey/blk. mix, 6 wks, 473-6355 (Milford).

### For Rent

**Apt**, 2 bdr, in Marlboro, avail. 11/1, \$420/mo. + util, 481-3022 (Marlboro).

**NH Chalet**, 3 bdr, near White Mts, \$250/wk, \$150/weekend, 877-3504 (Framingham).

**TWNHSE**, Plymouth, NH; mo/wk/wkend. rentals, reasonable rates, 881-2738 (Ashland).

**Ski House**, shares in N. Conway house, \$750 per couple, 12/1-5/1, 528-9733 (Franklin).

### Wanted

**Stove**, gas stove w/parlor heater, 791-0851 (Worcester).

**Wheelbarrow**, lg. sz. (4 cu. ft. or more), 792-9063 (Worcester).

**Roommate**, for apt. in pvt. house in Boston's Back Bay, fully furnished, util. inclu, \$400/mo, 536-9092 (Boston).

### For Sale

**Color TV**, stereo console, RCA 25 in, wood cabinet, \$150, 366-0206 (Westboro).

**Puppies**, AKC registered Golden Retrievers, avail. Nov, 881-4313 (Framingham).

**Wood/Coal Stove**, Shenendoah, used 3 yrs, \$350, 393-6581 (Northboro).

**Dishwasher**, Kenmore, pot scrubber, port, gold, 5 mo. old, \$285, 966-0284 (Bellingham).

**TV Cabinet**, for 25 in. Heathkit GR2000 or GR300, mediterranean style, \$150, 393-8861 (Northboro).

**Gas Water Heater**, new A.O. Smith 40 gal, 10 yr. tank, \$275, 485-5712 (Marlboro).

**Antique Bed**, maple, single bed, 4 poster, \$75, 966-0284 (Bellingham).

**Yard Sale**, 3 families, Oct. 15/16, 7 Summer St., Northboro.

**Snow Tires**, 2 Firestone D78-14, used 1 mo, \$50, 393-2591 (Northboro).

**Skis**, men's, w/polls & bindings; laced leather boots sz. 10, BO, 792-9063 (Worcester).

**Sleep Sofa**, full sz, beige, 3 mo. old, \$250, 533-2236 (Medway).

**Venetian Blinds**, varied sizes, 792-9063 (Worcester).

**Rims**, chrome wagon wheel for 5 lug Ford truck/Van, set/4, \$75, 476-3587 (E. Douglas).

**Tires**, 2 D78-14 4-ply bias belted, new, \$35, 476-3587 (E. Douglas).

**Chain Saw**, Homelite 360 professional, \$200, 234-2523 (Northbridge).

**Items**, Minolta SLR 110 camera, 200mm lens, \$100; Sears table sunlamp, \$30, 481-3022 (Marlboro).

**Snowmobiles**, 2, '72 Snow Princes on dbl. steel tilt crest trailer, \$600, 486-4985 (Littleton).

**Items**, tw. beds, fruitwood, \$125/pair; wicker chair, \$75; brass & iron 3/4 bed, \$75; 473-4712 (Milford).

**Items**, pine wall unit, 32in. x 80in, \$250; Ethan Allen curio shelf, \$20; lg. pewter chandelier, 8 candle lights, \$250; 478-2197 (Milford).

**Couch**, gold crushed velvet, \$75/BO, 872-7161 (Framingham).

**Window Unit**, fits 9ft. x 5 1/2ft. opening, dbl. hung side sashes, storm incl., \$150, 366-1724 (Westboro).

**Twin Bed**, w/box spring, \$25, 473-7842 (Milford).

**Skis**, Rossignol 195cm, Garmont boots sz 10, Tyrolia bindings, \$80, 534-0984 (Leominster).

**Seasoned Fire Wood**, oak, recently cleared lot, 845-9220 (Shrewsbury).

**Snow Tires**, G78-15 mounted on GM rims, bias belted, 481-4140 (Marlboro).

**Washer & Dryer**, Hoover portables, elec, \$300, 528-7251 (Franklin).

**Gold Sofa**, \$60, 478-4316 (Hopedale).

**Turntable**, dual 601, \$90; dishwasher mat, \$5; Shure V15-3 stylus, \$35, 756-8724 (Worcester).

**Refrigerators**, 1 sm, 1 lg; 1 lg. upright freezer, BO, 481-0761 (Marlboro).

**Ski Boots**, Nordica, men's sz. 11 med, 3 yrs. old, \$50, 935-4556 (Woburn).

### Autos

**Yamaha 250cc**, twin, 8K mi, luggage rack, windshield, \$450, 533-2236 (Medway).

**'68 VW Beetle**, blue, \$650/BO, 839-2703 (Grafton).

**'70 Plymouth Fury**, new exhaust, \$500, 791-8618 (Worcester).

**'72 Dodge Pick-Up**, 3/4 ton, 360, green, \$1400/w cap, \$1200 w/o, 534-0984 (Leominster).

**'73 Polara**, 360-V8, 2 bbl carb, PS/PB, new tires & brakes, \$500/BO, 966-0284 (Bellingham).

**'73 Dodge Polara**, 8 cyl, 87K mi, 2 dr, AC, \$500/BO, 683-1819 (Methuen).

**'74 Dodge Dart**, sedan, auto, PS, new battery & alternator, \$800/BO, 799-0273 (Worcester).

**'74 Chevy Nova**, new battery & transmission, \$850, 485-5717 (Marlboro).

**'74 Mustang**, 78K mi, 4 cyl, '80 engine, gold, \$500/BO, 756-7916 (Worcester) between 6-8 pm.

**'74 AMC Gremlin**, hatch, new tires, AM/FM 8 track, \$600/BO, 476-3224 (E. Douglas).

**'74 Dodge Dart**, needs body work, \$300, 791-4076 (Worcester).

**'75 Plymouth Valiant**, 4 dr, 6 cyl, auto, new tires, \$1200/BO, 852-2995 (Worcester).

**'75 Mercury Bobcat**, wagon, 4 cyl, std, needs minor repair, \$500/BO, 872-0704 (Framingham).

**'77 Olds Brougham**, PS, PB, AC, V6, 73K, \$2600, 839-6996 (Grafton).

**'77 Toyota**, 4 dr, stand, \$1500, 481-2788 (Southboro).

**'77 Chevy Pickup**, 3/4T, 2-wheel dr, auto, BO, 464-2705 (Princeton).

**'78 Plymouth Horizon**, 4 dr, hatch, auto, PS, fr. wh. dr, 2 new radials, \$2200/BO, 478-4316 (Hopedale).

**'78 Buick Regal**, AC, AM/FM 8 track, BO, 569-9555 (E. Boston).

**'78 Sunbird**, 4 cyl, 4 spd, new tires, shocks & exhaust, 60K mi, \$2500/BO, 366-8426 (Westboro).

**'79 Kawasaki KZ400**, 8K mi, \$900/BO, 393-2065 (Northboro).

**'80 Suzuki 750 L**, 7500 mi, highway bars, back rest, \$1995, 481-8134 (Marlboro).

**'80 Honda CX-500**, 5K mi, blk, extras, BO, 792-9063 (Worcester).

**'80 Mercury Cougar XR7**, loaded w/ every option, 485-2858 (Marlboro).

**'81 Grand Prix Brougham**, V6, PS, PB, PW, AM/FM, loaded, \$7000, 485-4015 (Marlboro).

**'81 Mustang**, hatch, sunroof, rear defogger, 29K mi, \$5000, 881-4313 (Framingham).

**'82 Mustang**, 16K mi, AM/FM cassette, 4 sp, \$6500/BO, 393-2065 (Northboro).

**'82 Yamaha YZ-80J**, liquid cooled, never raced, \$600, 865-9029 (Sutton).

**'82 Ford Van**, E250, PS/PB, sm. V8, AC, AM/FM stereo cassette, 20K mi, 839-3739 (Grafton).

## MENU

**Westboro Cafeteria**, Monday, Meatballs & Shells; Tuesday, Stuffed Pork Chops; Wednesday, Beef Stew; Thursday, Rachel's; and Friday, Baked Fish.

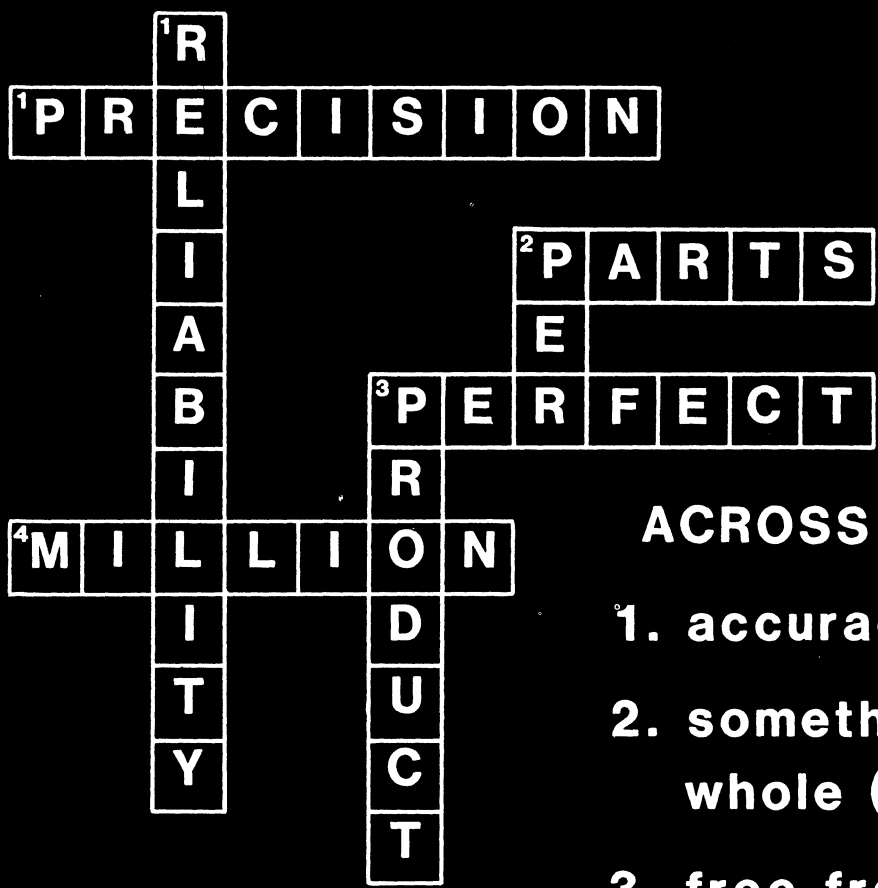
**DeeGee's**, Monday, Broc. & Cheddar Quiche; Tuesday, Ham & Cheese Omelet; Wednesday, Fettucini Alfredo; Thursday, Steak & Cheese Sand.; Friday, Seafood Quiche.

**Milford**, Monday, Stuffed Shells; Tuesday, Swedish Meatballs; Wednesday, Roast Turkey; Thursday, Pizza; Friday, Fish & Chips.

**Southboro**, Monday, Stuffed Shells; Tuesday, Swedish Meatballs; Wednesday, Chicken Cutlet; Thursday, Knockwurst & Sauerkraut; Friday, Baked Fish.

**MINI NEWS**, All ads must be submitted in writing and include employee's name, home phone and extension number. All ads must be received by 11 a.m. Tuesday morning of the week published. Ads will be stamped with the time and date as they're received and will run on a first come basis. Send ads to Cynthia Myers, MS A-235.

# THERE IS NO PUZZLE TO QUALITY.



## ACROSS

1. accuracy, exactness
2. something less than the whole (plural)
3. free from any defect or imperfection
4. one thousand times one thousand

## DOWN

1. dependability
2. for each
3. something that is produced

Data General

